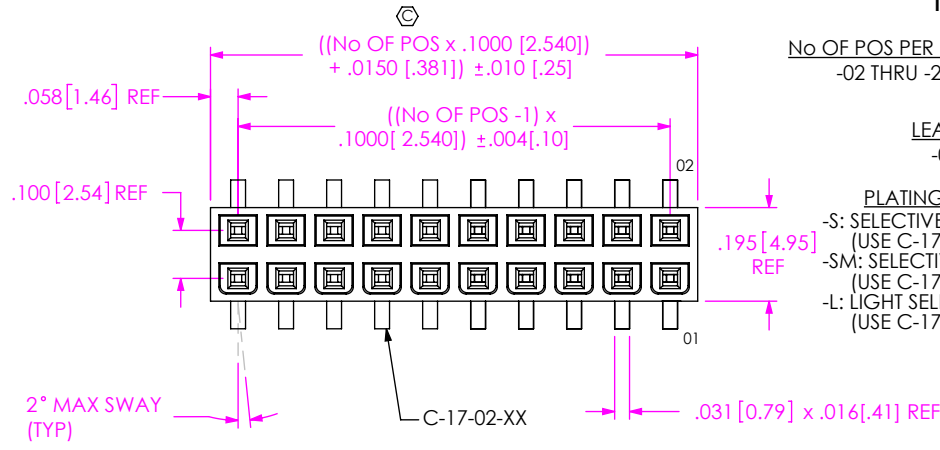


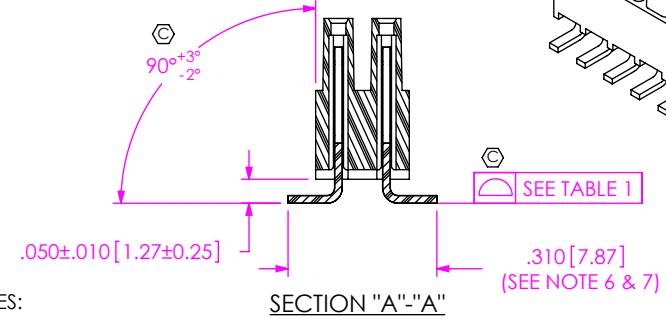
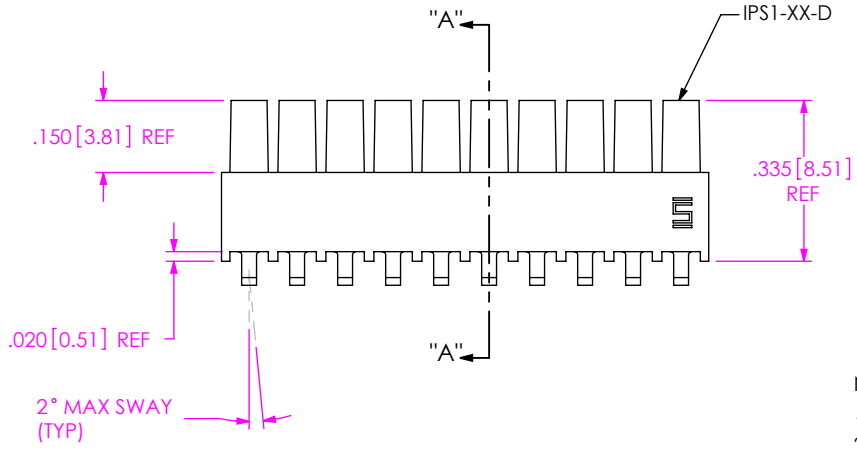
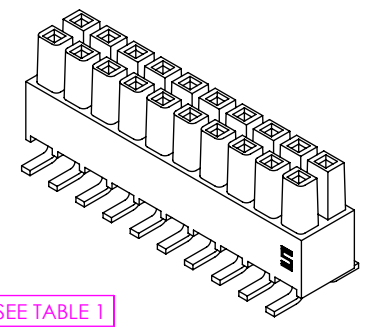
DO NOT SCALE FROM THIS PRINT

IPS1-1XX-XX-XX-D-VS-XX-XX-X-XX



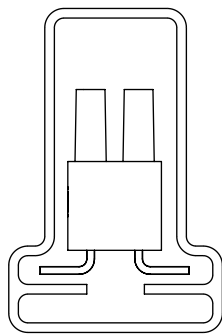
- No OF POS PER ROW**
-02 THRU -25
- LEAD STYLE**
-01
- PLATING SPECIFICATION**
 -S: SELECTIVE GOLD, MATTE TIN TAIL (USE C-17-02-S)
 -SM: SELECTIVE GOLD, MATTE TIN TAIL (USE C-17-02-S)
 -L: LIGHT SELECTIVE GOLD, MATTE TIN TAIL (USE C-17-02-L)
- ROW SPECIFICATION**
-D: DOUBLE (USE IPS1-XX-D)
- TAIL OPTION**
-VS: VERTICAL SURFACE MOUNT

- PACKAGING**
 BLANK: TUBES (SEE NOTES 12 & 13)
 -TR: TAPE & REEL (SEE NOTES 13 & 14)
 -FR: FULL REEL QTY TAPE & REEL (SEE NOTES 13 & 14)
- PICK & PLACE OPTION**
 -K: POLYIMIDE FILM PAD (4 POS MIN) (USE K-DOT-.217-.313-.005)
- OPTION**
 -PL: POSITION #1 REMOVED (USE IPS1-XX-D-P) (SEE NOTE 11)
- OPTION**
 -LC: LOCKING CLIP (USE LC-07-TM) (SEE NOTE 10)
 -FL: FRICTION LOCK (USE IPS1-XX-D-FL-X) (POSITIONS -05 THRU -25)



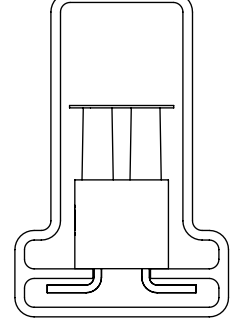
- NOTES:**
- ① REPRESENTS A CRITICAL DIMENSION.
 - MAXIMUM ALLOWABLE CUT FLASH: .010 [.25].
 - MINIMUM CONTACT PUSH OUT FORCE: 1.5 lbs.
 - MAXIMUM ALLOWABLE BOW: .003 [.08] INCH/INCH AFTER ASSEMBLY.
 - MAXIMUM VARIATION BETWEEN PIN ROWS: .010 [.25].
 - SHEAR TAILS TO ACHIEVE DIMENSION SHOWN.
 - SHEAR BURR ALLOWED ON TOP SIDE (MOLD SIDE) TO .005 [.13] MAX.
 - "END WALLS" AFTER CUTTING SHOULD BE .015+/- .003 [.38+/- .08].
 - AFTER REVISION N OF COMPONENT IPS1-XX-D-XX-X, SAMTEC LOGO TO APPEAR ON #1 POSITION.
 - DUE TO THE HIGH AMOUNT OF INSERTION FORCE NEEDED, THE -LC OPTION IS NOT COMPATIBLE WITH AUTO PLACEMENT. SAMTEC RECOMMENDS MANUAL PLACEMENT FOR ALL ASSEMBLIES WITH THE -LC OPTION.
 - FOR EXISTING CUSTOMERS ONLY, -POL CAN BE SUBSTITUED FOR -PL.
 - TUBES ARE STANDARD PACKAGING.
 - ORDERS WILL BE PACKAGED ACCORDING TO THE SAMTEC PACKAGING EFFICIENCY STANDARDS (SPES) FOUND ON WWW.SAMTEC.COM.
 - ATTACH LABEL -4X2 TO EACH REEL.

PACKAGING VIEW



TUBE: ASP-90528-01-S
PLUG: TP-03

PACKAGING VIEW FOR -K OPTION

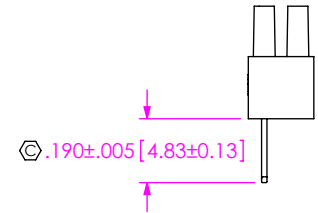


TUBE: ASP-90528-01-S
PLUG: TP-03

TABLE 1

POSITION	COPLANARITY
-04 THRU -10	.005 [.13]
-11 THRU -25	.006 [.15]

INPROCESS



UNLESS OTHERWISE SPECIFIED, DIMENSIONS ARE IN INCHES.
 TOLERANCES ARE:
 DECIMALS .XX: ±.01 [.3]
 .XXX: ±.005 [.13]
 .XXXX: ±.0020 [.051]

PROPRIETARY NOTE
 THIS DOCUMENT CONTAINS CONFIDENTIAL AND PROPRIETARY INFORMATION AND ALL DESIGN, MANUFACTURING, REPRODUCTION, USE, PATENT RIGHTS AND SALES RIGHTS ARE EXPRESSLY RESERVED BY SAMTEC, INC. THIS DOCUMENT SHALL NOT BE DISCLOSED, IN WHOLE OR PART, TO ANY UNAUTHORIZED PERSON OR ENTITY NOR REPRODUCED, TRANSFERRED OR INCORPORATED IN ANY OTHER PRODUCT IN ANY MANNER WITHOUT THE EXPRESS WRITTEN CONSENT OF SAMTEC, INC.



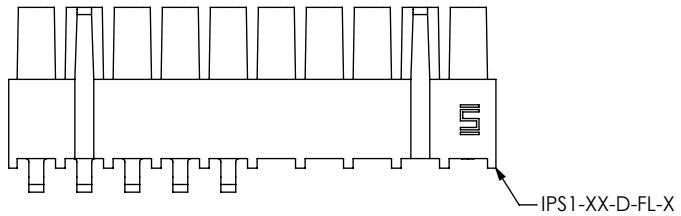
520 PARK EAST BLVD, NEW ALBANY, IN 47150
 PHONE: 812-944-6733 FAX: 812-948-5047
 e-Mail info@SAMTEC.com code 55322

MATERIAL: DO NOT SCALE DRAWING SHEET SCALE: 2.5:1
 INSULATOR: VECTRA E130i OR SUMIKA E6007LHF, COLOR: BLACK
 CONTACT: PHOS BRONZE, 510 SPRING TEMPER

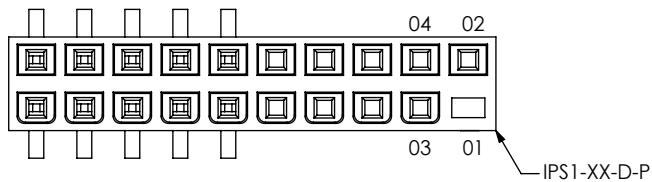
DESCRIPTION:
 .100 DOUBLE ROW SHROUDED SOCKET ASSEMBLY

DWG. NO.
 IPS1-1XX-XX-XX-D-VS-XX-XX-X-XX

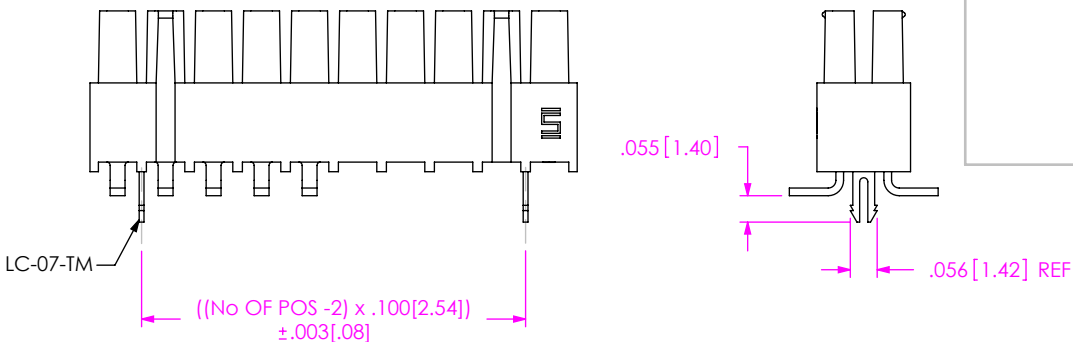
BY: DEAN P 10-30-2002 SHEET 1 OF 2



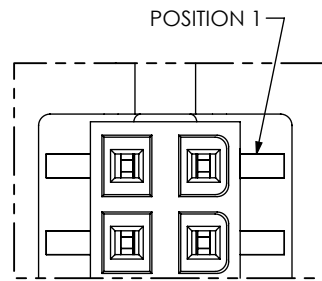
-FL: FRICTION LOCK OPTION
IPS1-110-01-X-D-VS-FL SHOWN



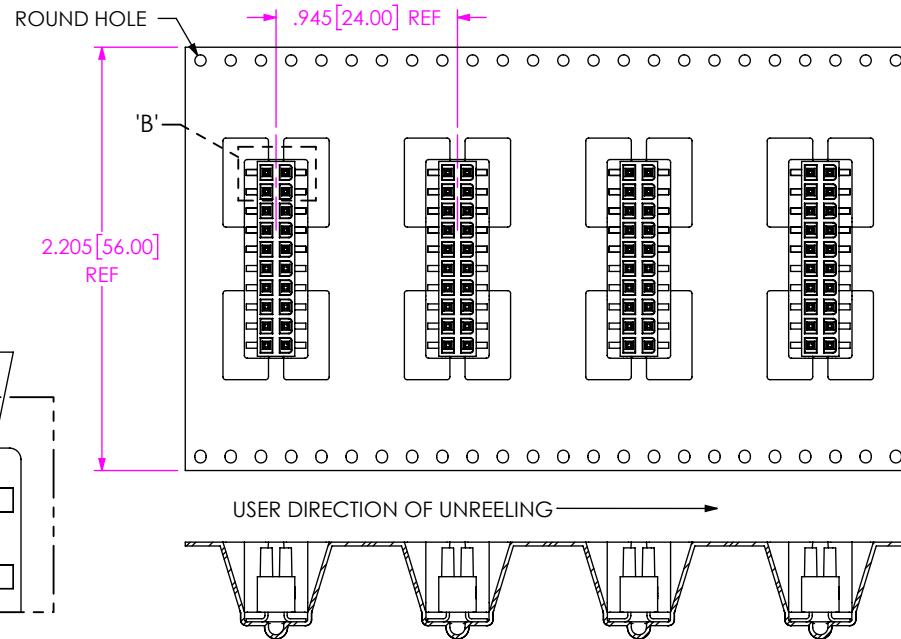
-PL: POLARIZED OPTION
IPS1-110-01-X-D-VS-PL SHOWN



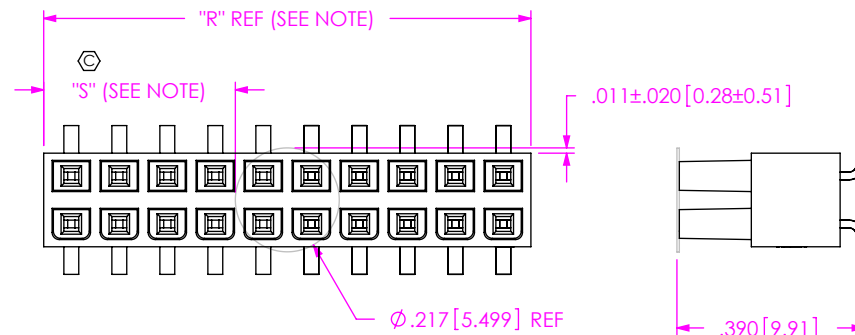
-LC: LOCKING CLIP OPTION
IPS1-110-01-X-D-VS-LC-FL SHOWN



DETAIL 'B'
SCALE 4:1



-TR: TAPE & REEL VIEW
(SCALE 1:1)



-K: POLYAMIDE FILM PAD OPTION

NOTE: "R" = USE MEASURED DIMENSION
"S" = $(("R" - .2165[5.499]) / 2) \pm .020[.51]$

PROPRIETARY NOTE
THIS DOCUMENT CONTAINS CONFIDENTIAL AND PROPRIETARY INFORMATION AND ALL DESIGN, MANUFACTURING, REPRODUCTION, USE, PATENT RIGHTS AND SALES RIGHTS ARE EXPRESSLY RESERVED BY SAMTEC, INC. THIS DOCUMENT SHALL NOT BE DISCLOSED, IN WHOLE OR PART, TO ANY UNAUTHORIZED PERSON OR ENTITY NOR REPRODUCED, TRANSFERRED OR INCORPORATED IN ANY OTHER PROJECT IN ANY MANNER WITHOUT THE EXPRESS WRITTEN CONSENT OF SAMTEC, INC.



520 PARK EAST BLVD. NEW ALBANY, IN 47150
PHONE: 812-944-6733 FAX: 812-948-5047
e-Mail: info@SAMTEC.com code 55322

DO NOT SCALE DRAWING

SHEET SCALE: 2.5:1

DESCRIPTION:
.100 DOUBLE ROW SHROUDED SOCKET ASSEMBLY

DWG. NO.
IPS1-1XX-XX-XX-D-VS-XX-XX-X-XX

BY: DEAN P 10-30-2002 SHEET 2 OF 2