



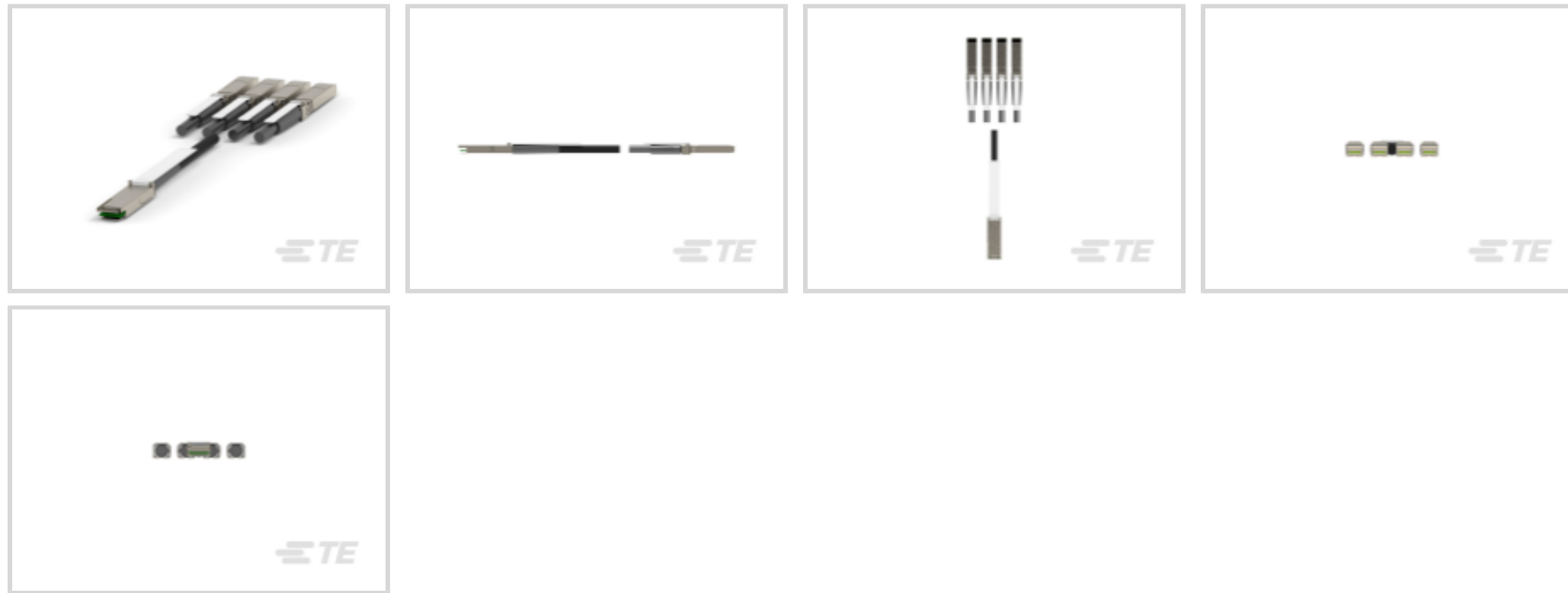
QSFP/QSFP+

TE Internal #: 2053453-2

QSFP to SFP+ Cable Assembly, 16 Positions, 1 m [3.28 ft], 10 Gb/s,
Black Cable, Shielded, 30 AWG, .051 mm²

[View on TE.com >](#)

Cable Assemblies > Copper Cable Assemblies > Pluggable I/O Cable Assemblies > QSFP-Four SFP+ I/O Cable Assembly 30 AWG



Cable Assembly Type: **QSFP to SFP+**

Cable Assembly (End A): **QSFP Plug**

Cable Assembly (End B): **SFP+ Plug**

Wire Size: **.051 mm²**

All QSFP-Four SFP+ I/O Cable Assembly 30 AWG (6)

Features

Product Type Features

Latching Style	Retractable Pin, Slide Latch
Cable Assembly Category	High Speed
Cable Assembly Type	QSFP to SFP+
Cable Assembly (End A)	QSFP Plug
Cable Assembly (End B)	SFP+ Plug
Cable Style	Madison TurboTwin, Madison TurboTwin - Round Jacketed

Configuration Features

Number of Positions	16
Number of Pairs	8
Number of Signal Positions	16

Electrical Characteristics

Impedance	100 Ω
-----------	-------

Signal Characteristics



Data Rate	10 Gb/s
-----------	---------

Body Features

Strain Relief Type	Heat Shrink Tubing, Overmold
--------------------	------------------------------

Shield Material	Flexible PVC
-----------------	--------------

Jacket Material	Flexible PVC
-----------------	--------------

Cable Color	Black
-------------	-------

Cable Flammability Rating	CL2
---------------------------	-----

Equalized	No
-----------	----

Mechanical Attachment

Mating Alignment	Without
------------------	---------

Dimensions

Wire Size	.051 mm ²
-----------	----------------------

Outside Cable Diameter	4.37 mm[.172 in]
------------------------	------------------

Operation/Application

Shielded	Yes
----------	-----

Other

Cable Assembly Configuration	Double Ended
------------------------------	--------------

Cable Assembly Length	1 m[3.28 ft]
-----------------------	--------------

Product Compliance

[For compliance documentation, visit the product page on TE.com>](#)

EU RoHS Directive 2011/65/EU	Compliant with Exemptions
------------------------------	---------------------------

EU ELV Directive 2000/53/EC	Compliant with Exemptions
-----------------------------	---------------------------

China RoHS 2 Directive MIIT Order No 32, 2016	Restricted Materials Above Threshold
---	--------------------------------------

EU REACH Regulation (EC) No. 1907/2006	<p>Current ECHA Candidate List: JUNE 2024 (241)</p> <p>Candidate List Declared Against: JUNE 2024 (241)</p> <p>SVHC > Threshold:</p> <p>TBPH (15% in Component Part)</p> <p>Pb (3.7% in Component Part)</p> <p>MCCP (.11% in Component Part)</p>
--	---

Article Safe Usage Statements:

Do not eat, drink or smoke when using this product. Wash thoroughly after handling. Do not handle until all safety precautions have been read and understood. Recycle if possible and dispose of the article by following all applicable governmental regulations relevant to your geographic location.

Halogen Content	Not Low Halogen - contains Br or Cl > 900 ppm.
-----------------	--



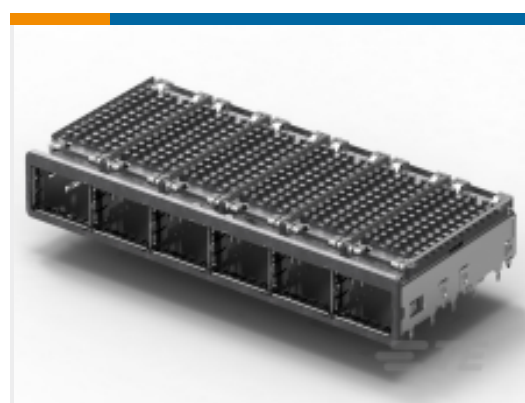
Solder Process Capability

Not applicable for solder process capability

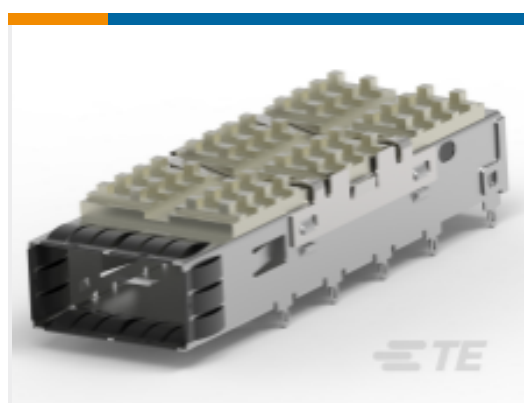
Product Compliance Disclaimer

This information is provided based on reasonable inquiry of our suppliers and represents our current actual knowledge based on the information they provided. This information is subject to change. The part numbers that TE has identified as EU RoHS compliant have a maximum concentration of 0.1% by weight in homogenous materials for lead, hexavalent chromium, mercury, PBB, PBDE, DBP, BBP, DEHP, DIBP, and 0.01% for cadmium, or qualify for an exemption to these limits as defined in the Annexes of Directive 2011/65/EU (RoHS2). Finished electrical and electronic equipment products will be CE marked as required by Directive 2011/65/EU. Components may not be CE marked. Additionally, the part numbers that TE has identified as EU ELV compliant have a maximum concentration of 0.1% by weight in homogenous materials for lead, hexavalent chromium, and mercury, and 0.01% for cadmium, or qualify for an exemption to these limits as defined in the Annexes of Directive 2000/53/EC (ELV). Regarding the REACH Regulation, the information TE provides on SVHC in articles for this part number is based on the latest European Chemicals Agency (ECHA) 'Guidance on requirements for substances in articles' posted at this URL: <https://echa.europa.eu/guidance-documents/guidance-on-reach>

Compatible Parts



TE Part # 2143330-1
1X6 QSFP Kit Assy Bhnd Bzl,PCI



TE Part # 1888631-1
Cage Assy PCI Hsink QSFP Thru



TE Part # 1888631-3
Cage Assy NW Hsink QSFP Thru Bezel



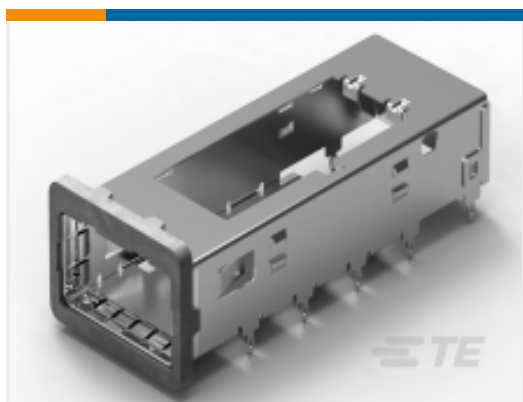
TE Part # 2007626-1
1x4 QSFP Kit Assy Sqr LP, SAN Htsnk



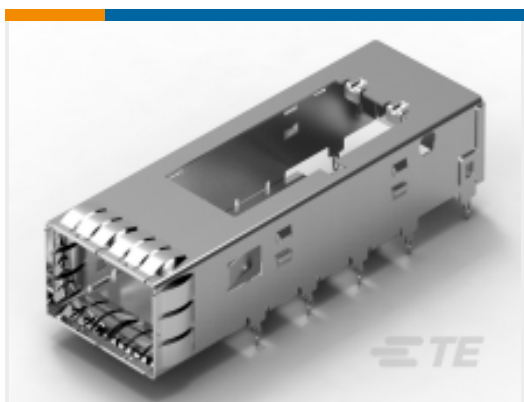
TE Part # 2085945-1
QSFP+ Assy, 2x1, Gskt, 2LP-Outr, Sn EONs



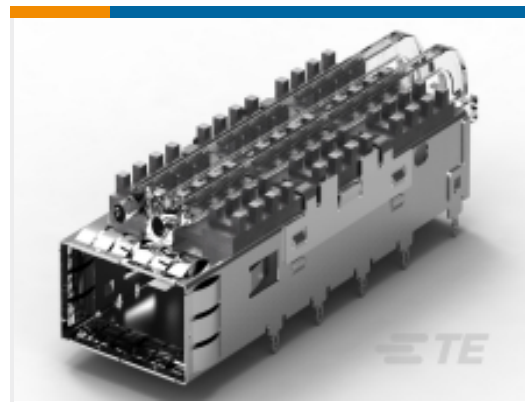
TE Part # 2007456-1
1x3 QSFP Kit Assy Bhnd Bzl,PCI



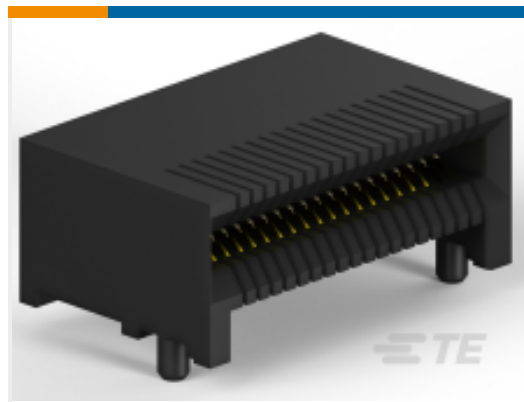
TE Part # 1888781-1
Cage Assy Behind Bezel QSFP



TE Part # 1888617-1
Cage Assy, QSFP, Through Bezel



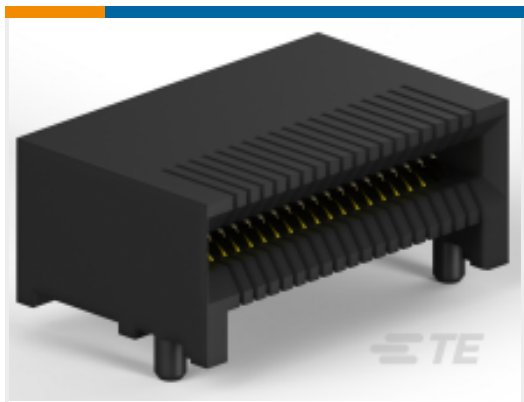
TE Part # 1888971-3
QSFP TB Cage Assy, w/LP, PCI HS



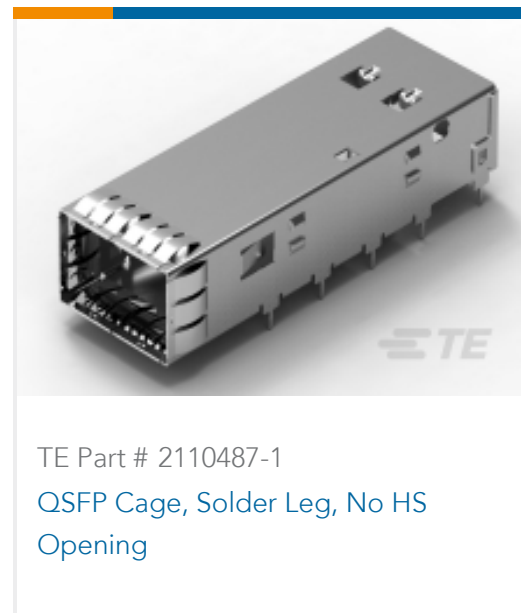
TE Part # 1-1761987-8
ReceptacleConnAssm38PosTape/Re



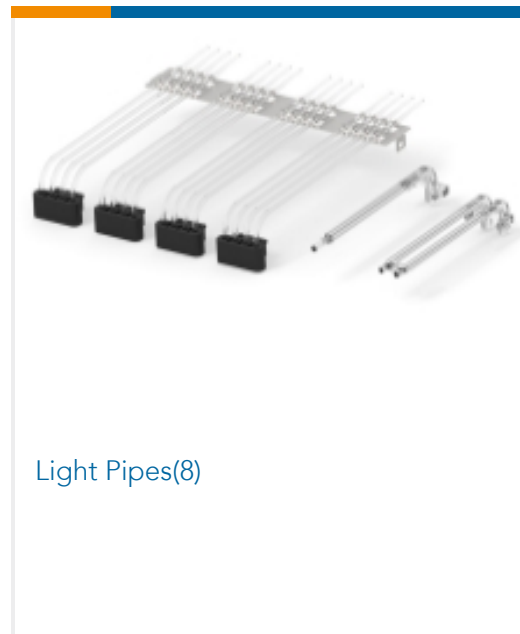
TE Part # 1888631-2
Cage Assy SAN Hsink QSFP Thru Bezel



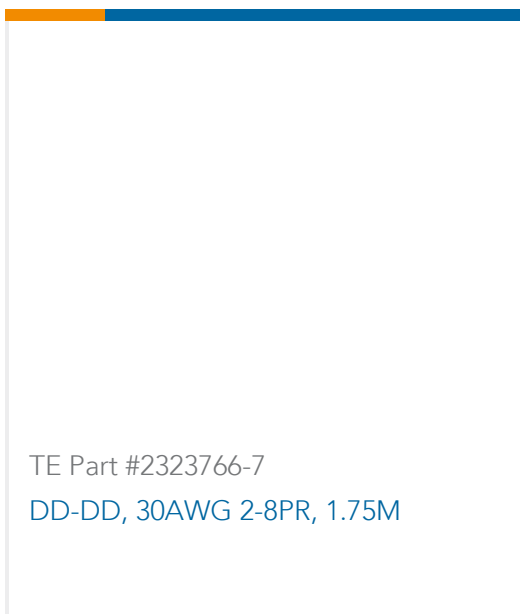
TE Part # 1761987-9
ReceptacleConnAssm38PosTape/Re



Also in the Series | QSFP/QSFP+



Customers Also Bought





Documents

CAD Files

3D PDF

3D

Customer View Model

[ENG_CVM_CVM_2053453-2_J.2d_dxf.zip](#)

English

Customer View Model

[ENG_CVM_CVM_2053453-2_J.3d_igs.zip](#)

English

Customer View Model

[ENG_CVM_CVM_2053453-2_J.3d_stp.zip](#)

English

By downloading the CAD file I accept and agree to the [Terms and Conditions](#) of use.

Datasheets & Catalog Pages

[4-1773455-3 - Quick Reference Guide SFP+ Solutions](#)

English

[9-1773458-9_QSFP/QSFP+_HIGH_SPEED_COPPER_CABLE_ASSEMBLIES](#)

English