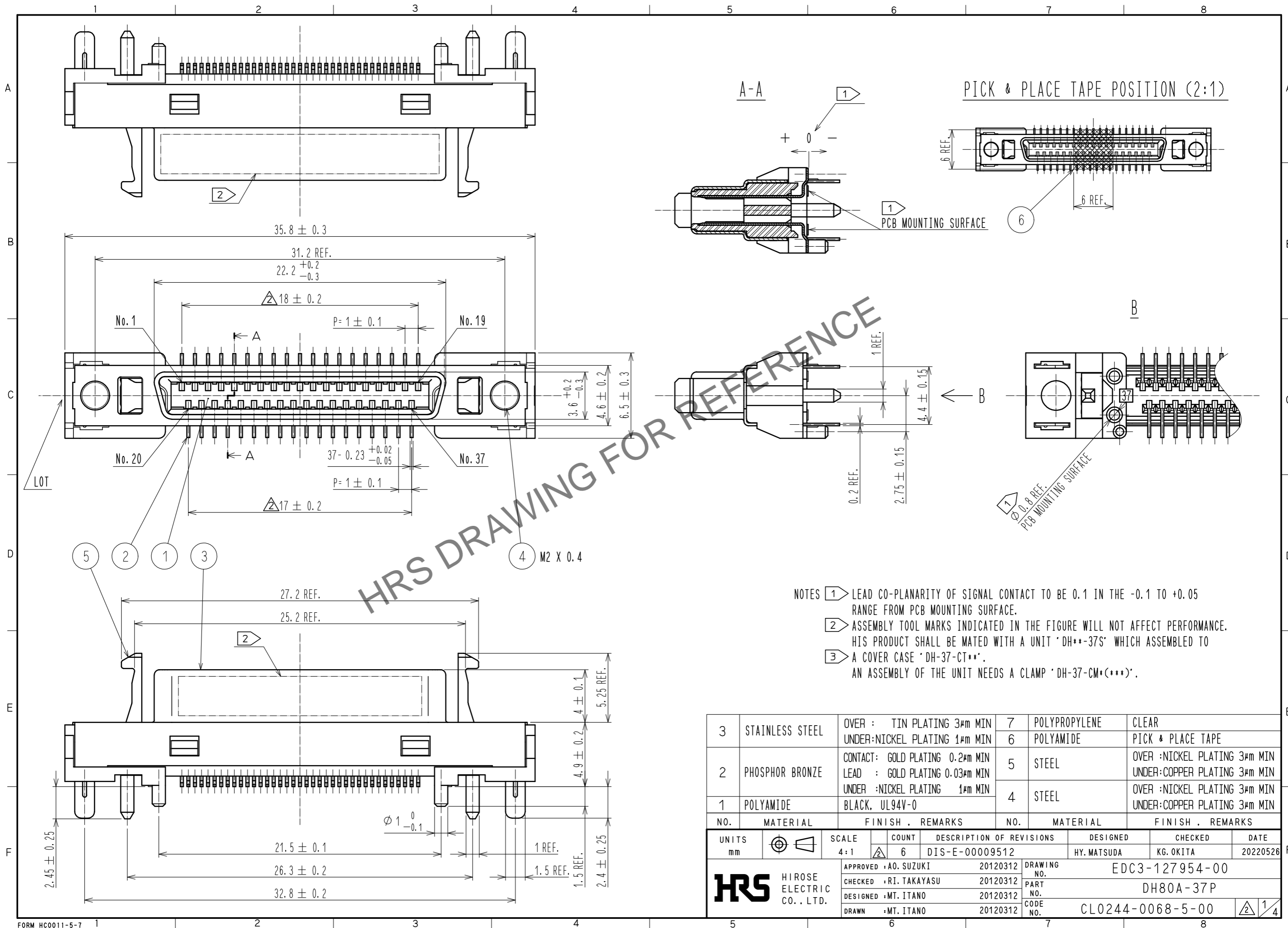


Jul.1.2024 Copyright 2024 HIROSE ELECTRIC CO., LTD. All Rights Reserved.
 In case of consideration for using Automotive equipment / device which demand high reliability, kindly contact our sales window correspondents.



HRS DRAWING FOR REFERENCE

- NOTES
- LEAD CO-PLANARITY OF SIGNAL CONTACT TO BE 0.1 IN THE -0.1 TO +0.05 RANGE FROM PCB MOUNTING SURFACE.
 - ASSEMBLY TOOL MARKS INDICATED IN THE FIGURE WILL NOT AFFECT PERFORMANCE. HIS PRODUCT SHALL BE MATED WITH A UNIT 'DH**-37S' WHICH ASSEMBLED TO
 - A COVER CASE 'DH-37-CT**'. AN ASSEMBLY OF THE UNIT NEEDS A CLAMP 'DH-37-CM+(***)'.

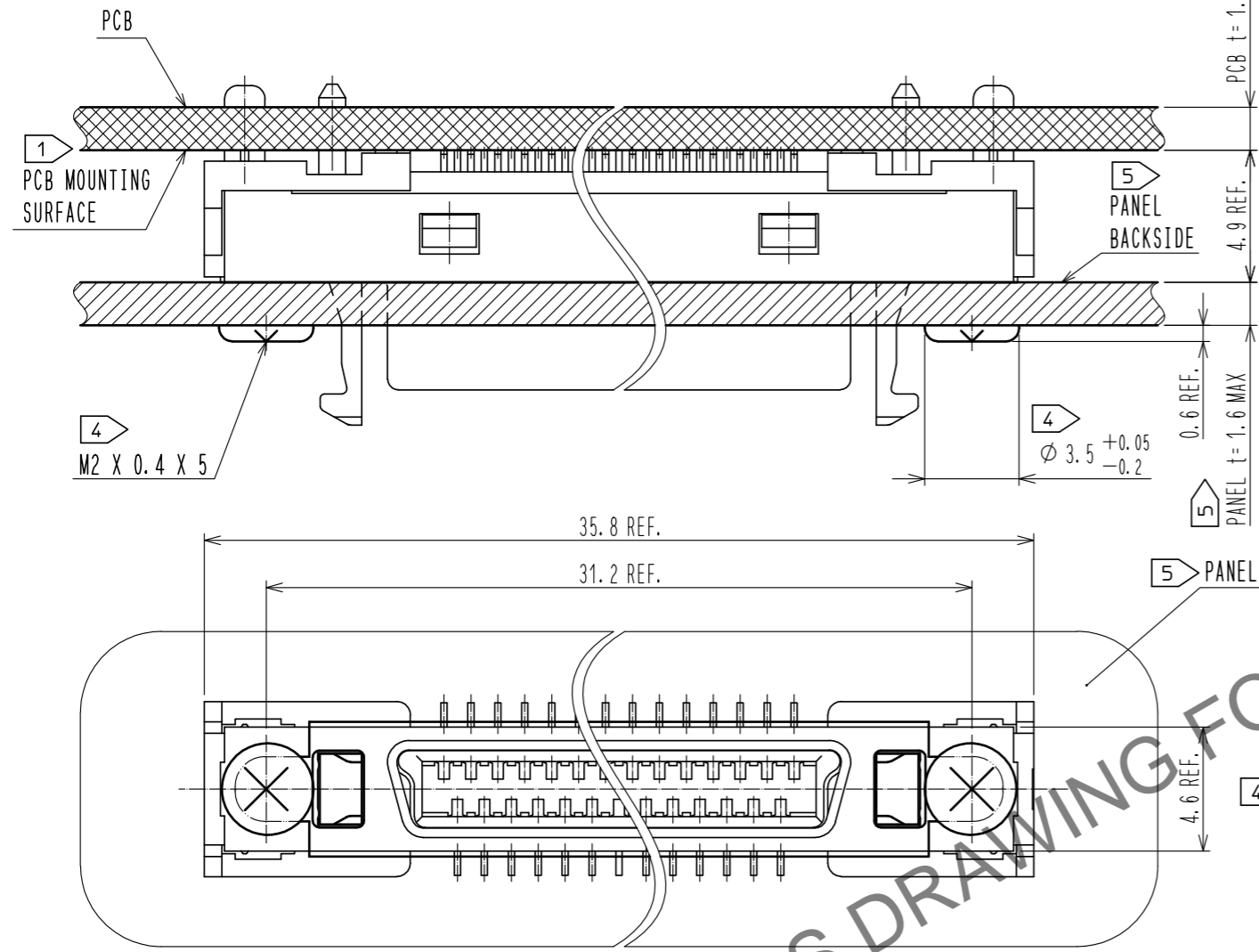
NO.	MATERIAL	FINISH . REMARKS	NO.	MATERIAL	FINISH . REMARKS
3	STAINLESS STEEL	OVER : TIN PLATING 3μm MIN UNDER: NICKEL PLATING 1μm MIN	7	POLYPROPYLENE	CLEAR
2	PHOSPHOR BRONZE	CONTACT: GOLD PLATING 0.2μm MIN LEAD : GOLD PLATING 0.03μm MIN UNDER : NICKEL PLATING 1μm MIN	6	POLYAMIDE	PICK & PLACE TAPE
1	POLYAMIDE	BLACK, UL94V-0	5	STEEL	OVER : NICKEL PLATING 3μm MIN UNDER: COPPER PLATING 3μm MIN
			4	STEEL	OVER : NICKEL PLATING 3μm MIN UNDER: COPPER PLATING 3μm MIN

UNITS	SCALE	COUNT	DESCRIPTION OF REVISIONS	DESIGNED	CHECKED	DATE
mm	4:1	6	DIS-E-00009512	HY. MATSUDA	KG. OKITA	20220526

APPROVED	CHECKED	DESIGNED	DRAWN	DRAWING NO.	PART NO.	CODE NO.
A0. SUZUKI	RI. TAKAYASU	MT. ITANO	MT. ITANO	EDC3-127954-00	DH80A-37P	CL0244-0068-5-00
20120312	20120312	20120312	20120312			

Jul.1.2024 Copyright 2024 HIROSE ELECTRIC CO., LTD. All Rights Reserved.
 In case of consideration for using Automotive equipment / device which demand high reliability, kindly contact our sales window correspondents.

CONNECTR MOUNTED ON PCB
 (FOR EXAMPLE, PANEL THICKNESS IS 1.6mm)

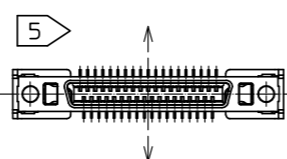
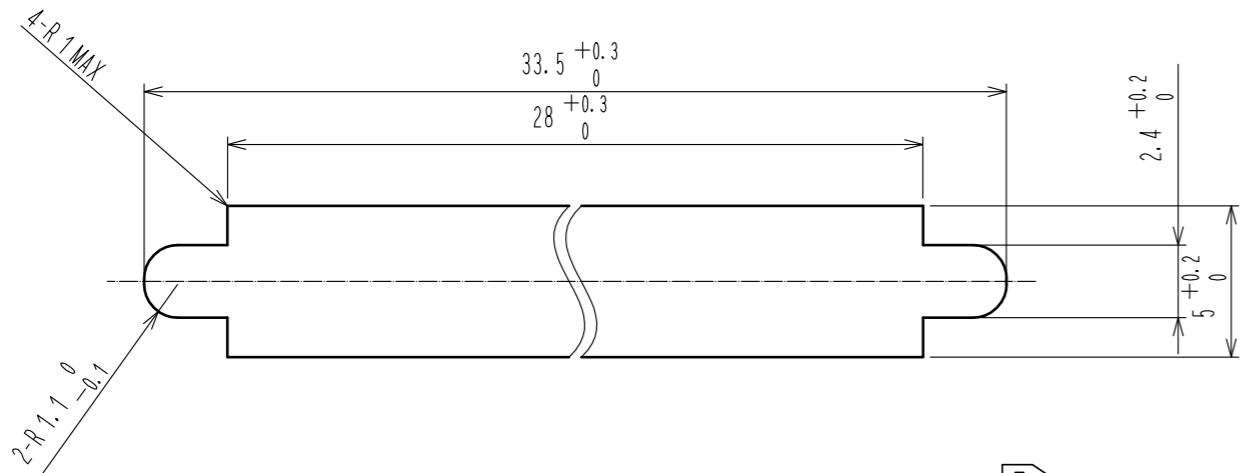


1 PCB MOUNTING SURFACE

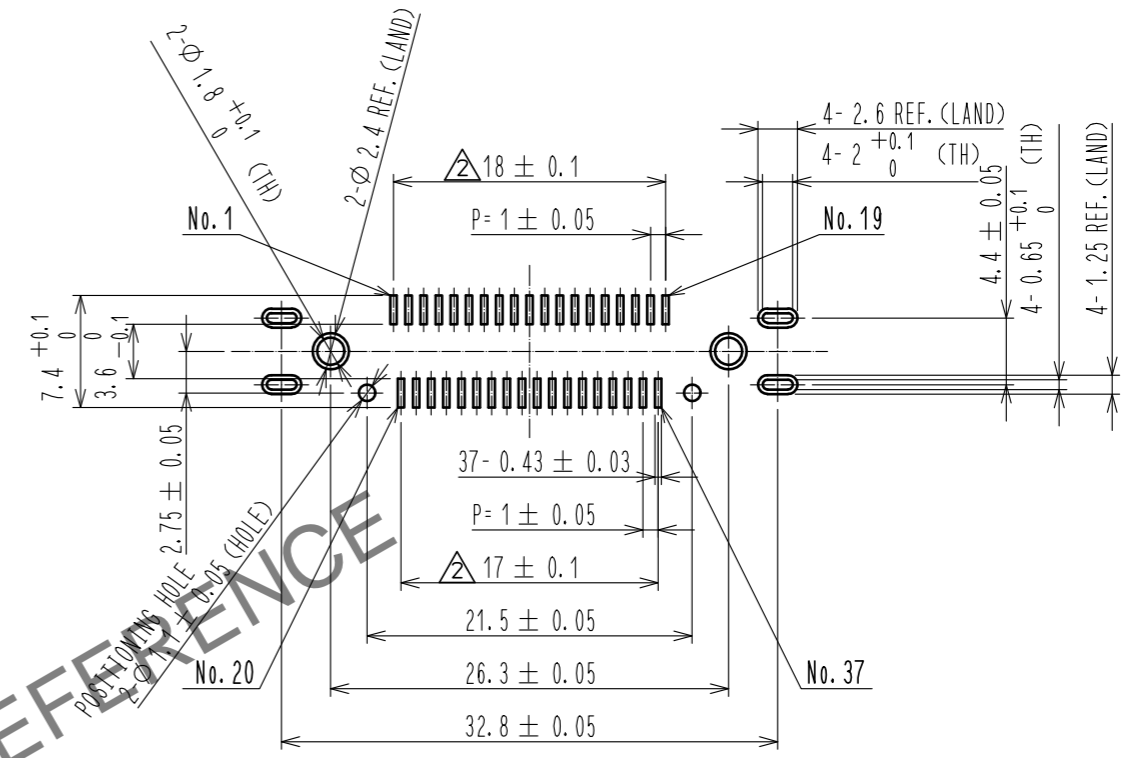
4 M2 X 0.4 X 5

5 PANEL

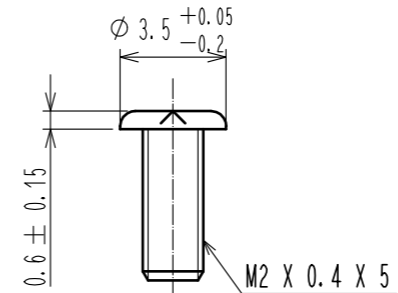
5 PANEL CUTOUT FOR REFERENCE



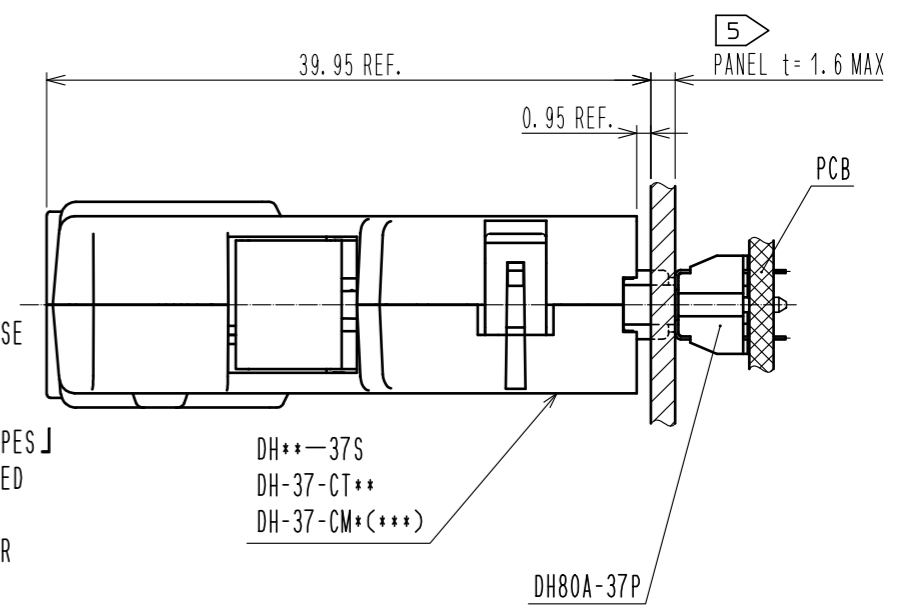
PCB LAYOUT FOR REFERENCE (MOUNTING SURFACE SIDE) (2:1)



4 SCREW FOR INSTALLATION



MATED (2:1)



- NOTES
- 4 INSTALLATION WITH THE PANEL MUST USE A DEDICATED SCREW.
 PURCHASE :NITTOSEIKO CO.,LTD.
 [FINE PAN HEAD MACHINE SCREW 2 TYPES]
 - 5 THIS PRODUCT WAS DESIGNED TO BE USED WITH FIXED ONTO A PANEL.
 IN THE CASE THE PLUG IS MATED UNDER UN-FIXED CONDITION AND ADDED STRONG LOAD ON INDICATED DIRECTION, IT HAS A RISK OF BEING PEELED OFF FROM PCB. THEN PLEASE TAKE CARE ON HANDLING WHEN YOU USE IT UNDER THE CONDITION BY FIXING IT ONTO HOUSING OR THE OTHER WAYS. PANEL SIZE SHOULD USE 1.6 MM MAX.



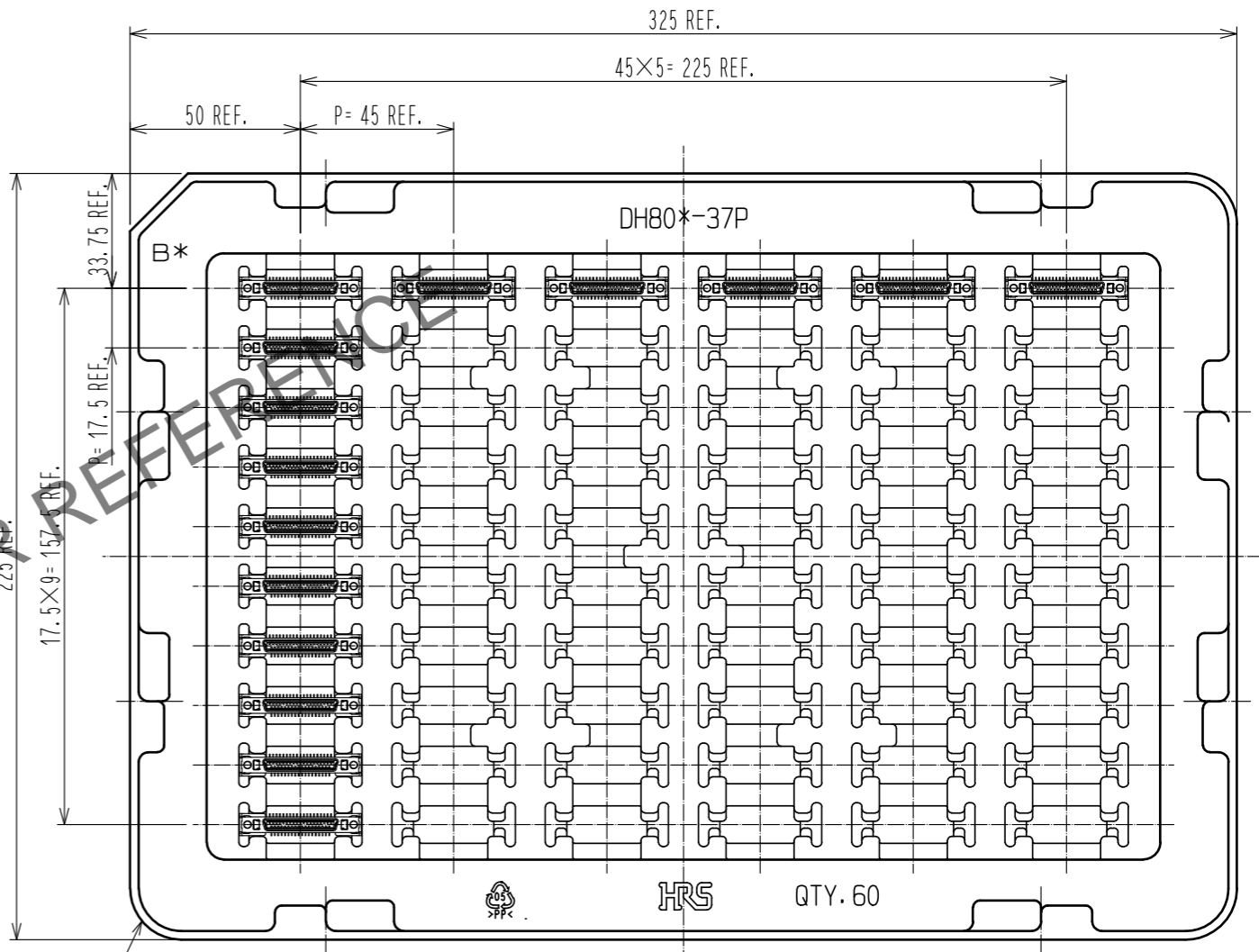
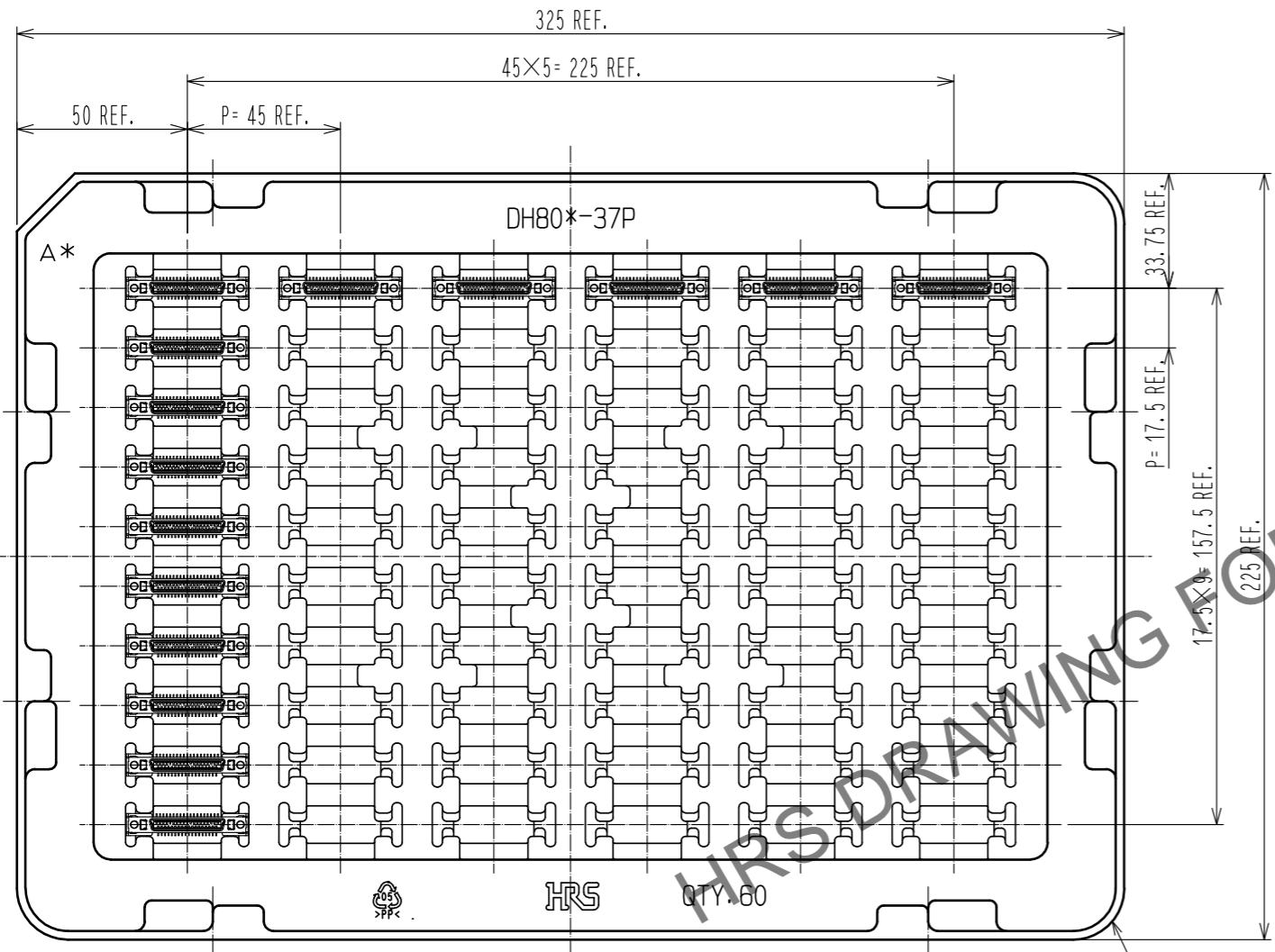
DRAWING NO.	EDC3-127954-00
PART NO.	DH80A-37P
CODE NO.	CLO244-0068-5-00

Jul.1.2024 Copyright 2024 HIROSE ELECTRIC CO., LTD. All Rights Reserved.
In case of consideration for using Automotive equipment / device which demand high reliability, kindly contact our sales window correspondents.

DRAWING FOR PACKING (FREE)

A TYPE

B TYPE

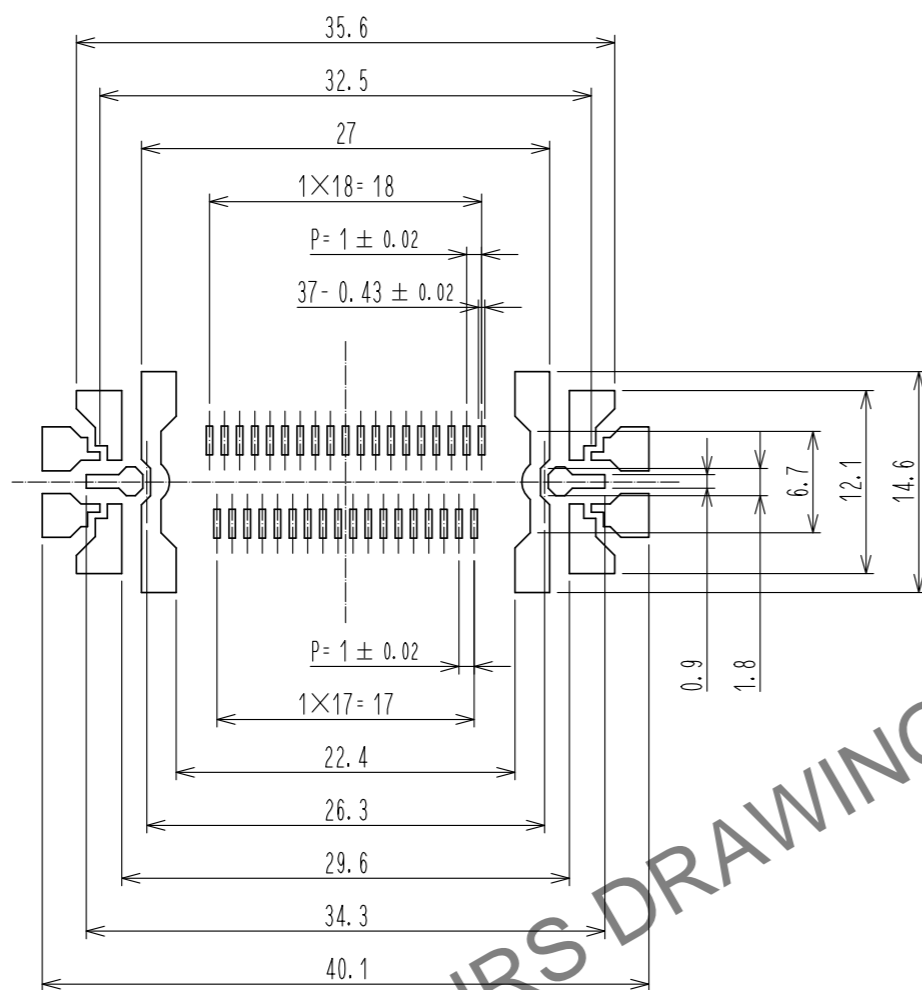


※TRAYS, A TYPE AND B TYPE, ARE PILED UP ALTERNATELY.

HRS	DRAWING NO.	EDC3-127954-00
	PART NO.	DH80A-37P
	CODE NO.	CL0244-0068-5-00
		3/4

Jul.1.2024 Copyright 2024 HIROSE ELECTRIC CO., LTD. All Rights Reserved.
In case of consideration for using Automotive equipment / device which demand high reliability, kindly contact our sales window correspondents.

REFERENCE METAL MASK LAYOUT(2:1)
(t=0.15)



HRS DRAWING FOR REFERENCE

GENERAL TOLERANCE IS ± 0.05

6. Metal mask dimensions of the drawings described, are reference dimensions for 0.15 mm thickness metal mask.
Change the metal mask dimensions by thickness of the metal mask, thickness of PCB, component of solder paste and mounting conditions.
Change the metal mask dimensions in case of mounting DH***P in parallel.
Change the metal mask dimensions, if there are other mounting parts or implementation pattern around the portion of mounting position of DH***P.

HRS	DRAWING NO.	EDC3-127954-00
	PART NO.	DH80A-37P
	CODE NO.	CL0244-0068-5-00

4/4