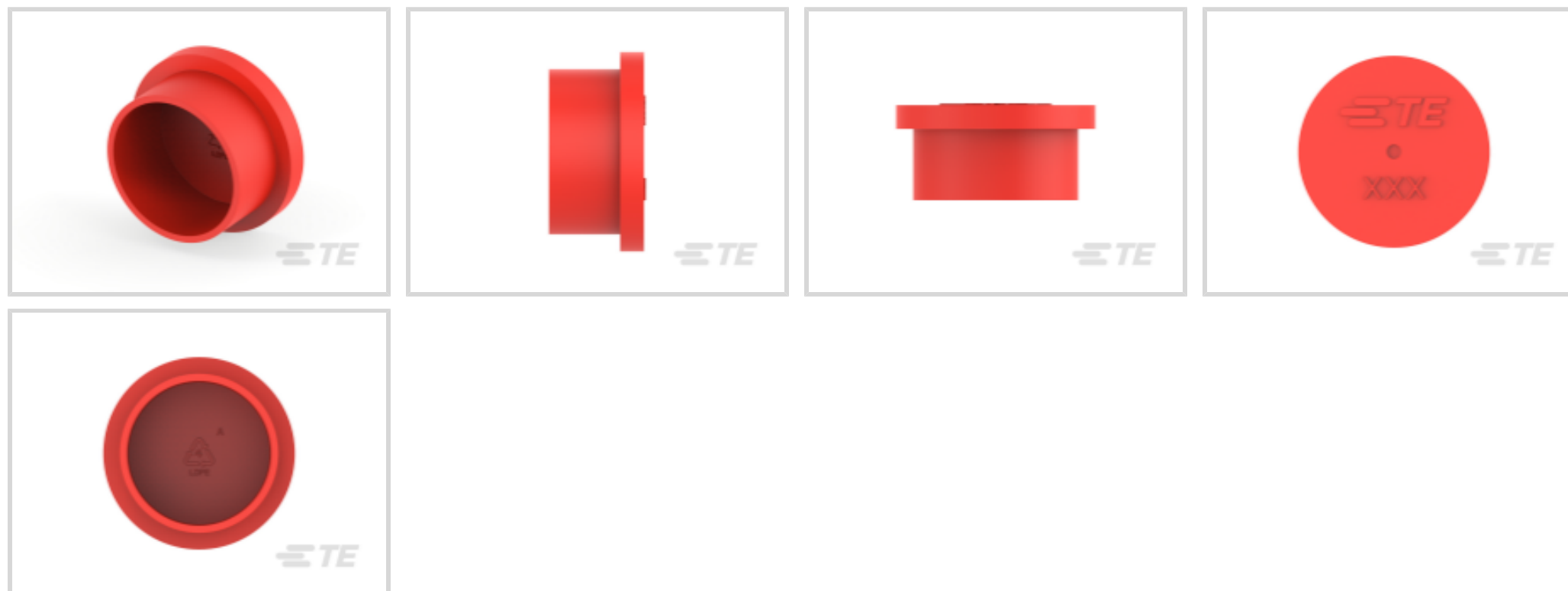




Connectors > Connector Accessories > Connector Caps & Covers



Connector Cover Type: **Protective Cap**  
 Primary Product Color: **Red**  
 Primary Product Material: **Thermoplastic**  
 Operating Temperature (Max): **80 °C [ 176 °F]**  
 Operating Temperature Range: **-20 – 80 °C [ -4 – 176 °F]**

### Features

#### Product Type Features

|                      |                |
|----------------------|----------------|
| Connector Cover Type | Protective Cap |
|----------------------|----------------|

#### Body Features

|                          |               |
|--------------------------|---------------|
| Primary Product Color    | Red           |
| Primary Product Material | Thermoplastic |

#### Housing Features

|                                 |          |
|---------------------------------|----------|
| Compatible With Connector Shape | Circular |
|---------------------------------|----------|

#### Usage Conditions

|                             |                          |
|-----------------------------|--------------------------|
| Operating Temperature (Max) | 80 °C[176 °F]            |
| Operating Temperature Range | -20 – 80 °C[-4 – 176 °F] |

#### Operation/Application

|                                      |    |
|--------------------------------------|----|
| Compatible With Connector Shell Size | 13 |
|--------------------------------------|----|

### Product Compliance

[For compliance documentation, visit the product page on TE.com>](#)

|                              |           |
|------------------------------|-----------|
| EU RoHS Directive 2011/65/EU | Compliant |
|------------------------------|-----------|

|   |   |
|---|---|
| EU ELV Directive 2000/53/EC                   | Not Yet Reviewed  |
| China RoHS 2 Directive MIIT Order No 32, 2016 | No Restricted Materials Above Threshold   |
| EU REACH Regulation (EC) No. 1907/2006        | Current ECHA Candidate List: JUNE 2024 (241)<br>Candidate List Declared Against: JUNE 2024 (241)<br>Does not contain REACH SVHC |
| Halogen Content                               | Low Halogen - Br, Cl, F, I < 900 ppm per homogenous material. Also BFR/CFR/PVC Free   |
| Solder Process Capability                     | Not reviewed for solder process capability  |

Product Compliance Disclaimer

This information is provided based on reasonable inquiry of our suppliers and represents our current actual knowledge based on the information they provided. This information is subject to change. The part numbers that TE has identified as EU RoHS compliant have a maximum concentration of 0.1% by weight in homogenous materials for lead, hexavalent chromium, mercury, PBB, PBDE, DBP, BBP, DEHP, DIBP, and 0.01% for cadmium, or qualify for an exemption to these limits as defined in the Annexes of Directive 2011/65/EU (RoHS2). Finished electrical and electronic equipment products will be CE marked as required by Directive 2011/65/EU. Components may not be CE marked. Additionally, the part numbers that TE has identified as EU ELV compliant have a maximum concentration of 0.1% by weight in homogenous materials for lead, hexavalent chromium, and mercury, and 0.01% for cadmium, or qualify for an exemption to these limits as defined in the Annexes of Directive 2000/53/EC (ELV). Regarding the REACH Regulation, the information TE provides on SVHC in articles for this part number is based on the latest European Chemicals Agency (ECHA) 'Guidance on requirements for substances in articles' posted at this URL: <https://echa.europa.eu/guidance-documents/guidance-on-reach>

## Compatible Parts



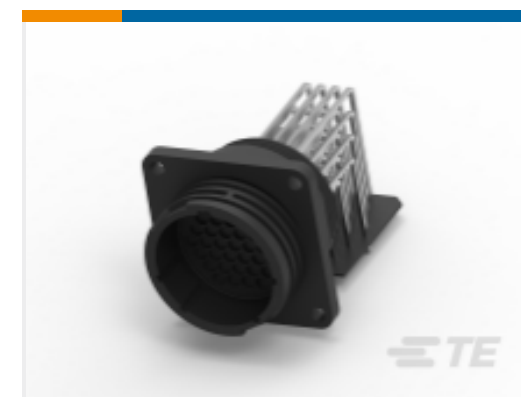
TE Part # CAT-AM71-C83998J  
Cable/Panel Mount Connector, CPC Series 1



TE Part # CAT-AM71-C83998AA  
Two-Piece Receptacle, CPC Series 6



TE Part # CAT-AM71-C83998Y  
One-Piece Connector, Sealed, CPC Series 1

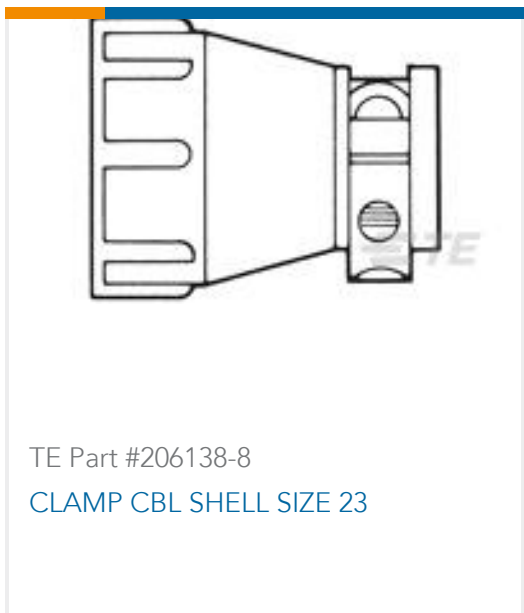


TE Part # CAT-AM71-C83998F  
Connectors with Posted Pin Contacts, CPC Series 1



TE Part # 211401-3  
RECEPT,SZ 13-7,CPC

## Customers Also Bought



## Documents

### Product Drawings

[CAP, CPC, SIZE 13 RECP, RED](#)

English

### CAD Files

Customer View Model

[ENG\\_CVM\\_CVM\\_2-2407269-3\\_2.3d\\_stp.zip](#)

English

Customer View Model

[ENG\\_CVM\\_CVM\\_2-2407269-3\\_2.2d\\_dxf.zip](#)

English

Customer View Model

[ENG\\_CVM\\_CVM\\_2-2407269-3\\_2.3d\\_igs.zip](#)

English

### 3D PDF

3D

By downloading the CAD file I accept and agree to the [Terms and Conditions](#) of use.

### Instruction Sheets

[Instruction Sheet \(U.S.\)](#)

English