

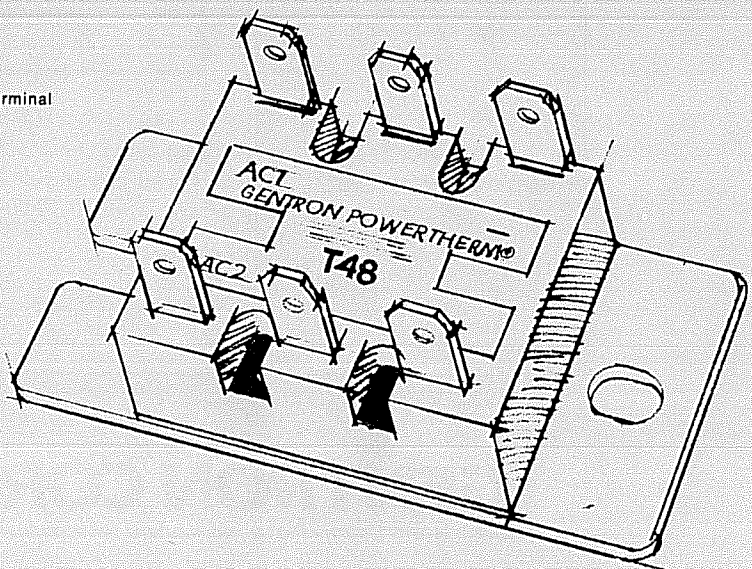
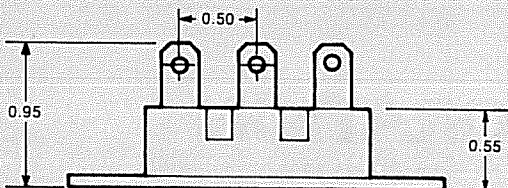
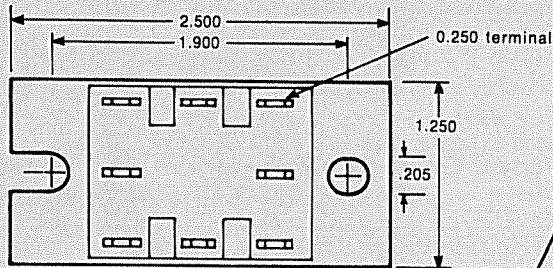
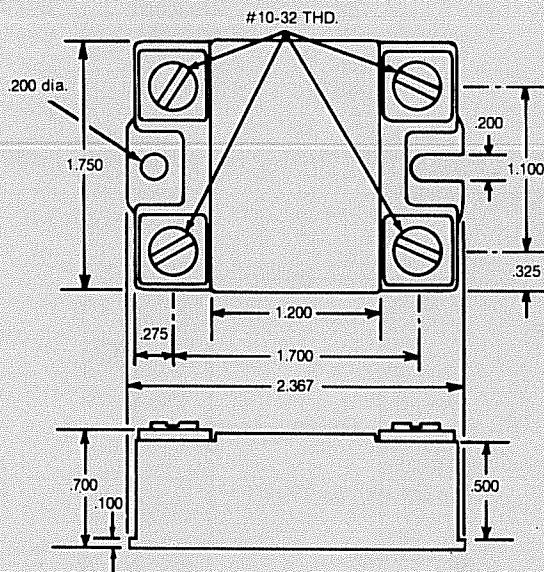
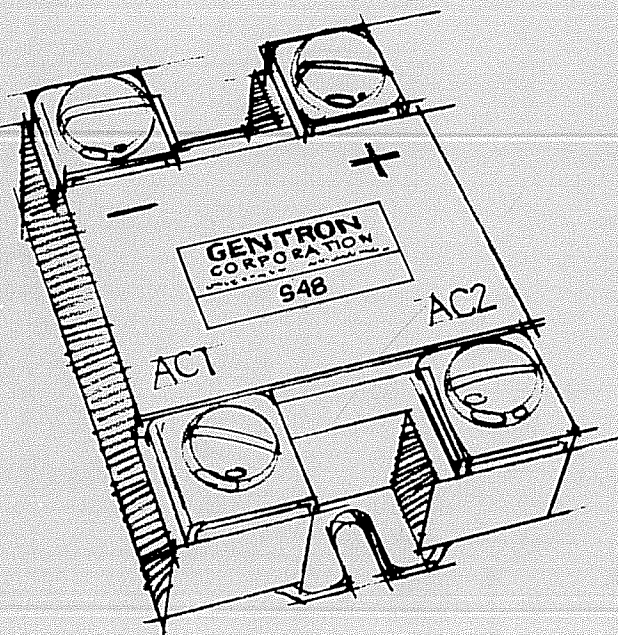


GENTRON INTRODUCES POWER THERM[®]

S48 & T48 Bridge Rectifier Circuits

Gentron's S48 and T48 Bridge Rectifier Circuits offer all the advantages of Gentron's exclusive POWER THERM process. This process guarantees low thermal resistance from the chip to the heat sink mounting plate. The POWER THERM process also offers a high surge capability.

Numerous circuits are available in the "48" series. In addition to these shown here, individual circuits with voltage suppressors are available. All circuits are available with ratings to 1200 volts.



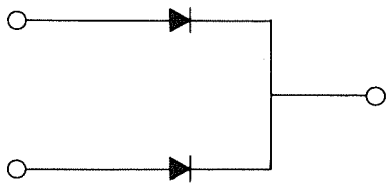
ELECTRICAL SPECIFICATIONS

Series	48	T	S
VPIV	Peak Inverse Voltage	1200	1200
IT(DC)	Maximum output current (A) @ 75°C base temperature	50	100
IT(DC)	Maximum output current (A) unmounted	10	20
IRA	Reverse avalanche test (MA)	10	10
IR	Reverse leakage micro amps @ 25°C at rated PIV	100	100
IR	Reverse leakage micro amps @ 100°C at rated PIV	500	500
ITSM	Maximum (non-repetitive) surge per leg 8.3 M.S.	800	800
ITSM	Maximum (repetitive) surge per leg	500	700
VFM	Maximum peak forward voltage drop at 125°C	1.20V @ .50A	1.50V @ 100A
Hi Pot Test	Terminal to base	2.5KVDC	2.5KVDC
ΘJB	Thermal resistance, chip to base	.4°C/W Max.	.3°C/W Max.
	Temp Operating	-25°C + 125°C	
	Temp Storage	-25°C + 125°C	
	Terminal and mounting screw torque	12 to 20 inch-pounds	

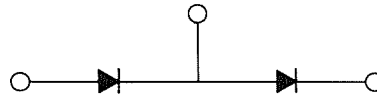
PART NUMBER IDENTIFICATION

Series	Type	Voltage	Example: SPFW 400V T483B Option: Add "SE" for external suppressor.
481	1 (SPCT)	A = 200	
482	2 (Doubler)	B = 400	
483	3 (SPFW)	C = 600	
484	4 (TPHW)	D = 800	
485	5 (TPFW)	E = 1000 F = 1200	

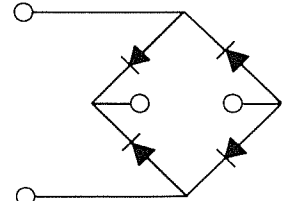
ELECTRICAL SCHEMATICS



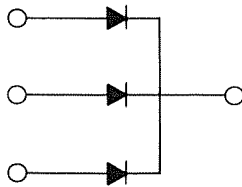
481
Single phase center tap



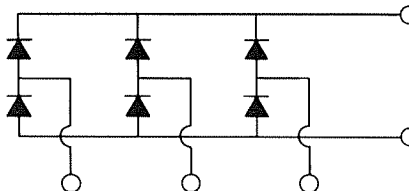
482
Doubler



483
Single phase full wave



484
Three phase half wave



485
Three phase full wave



GENTRON CORPORATION

6667 North Sidney Place, Milwaukee, Wisconsin USA 53209 / 414-351-1660 Telex #26881