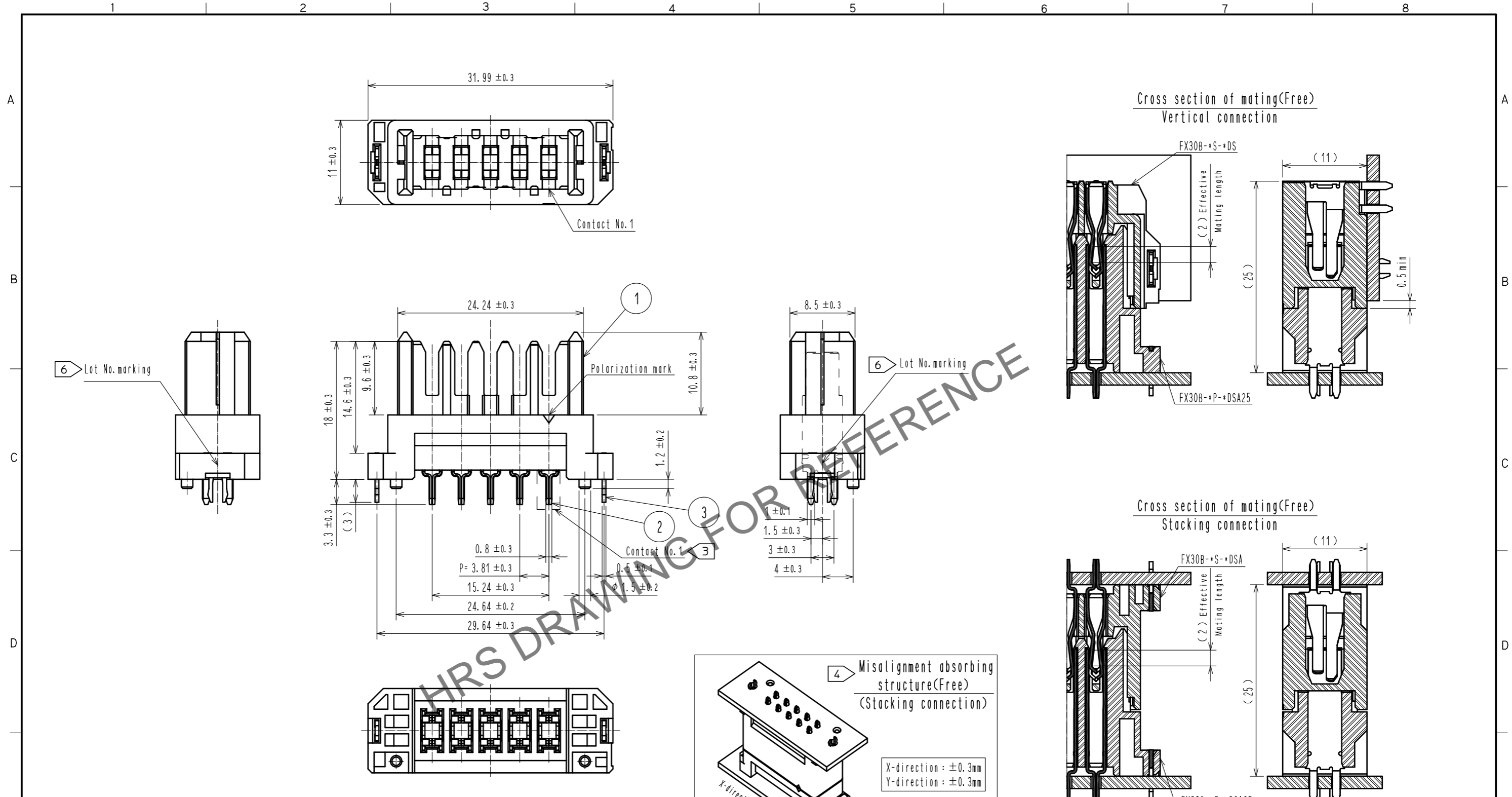


Jun.1.2024 Copyright 2024 HIROSE ELECTRIC CO., LTD. All Rights Reserved.  
In case of consideration for using Automotive equipment / device which demand high reliability, kindly contact our sales window correspondents.



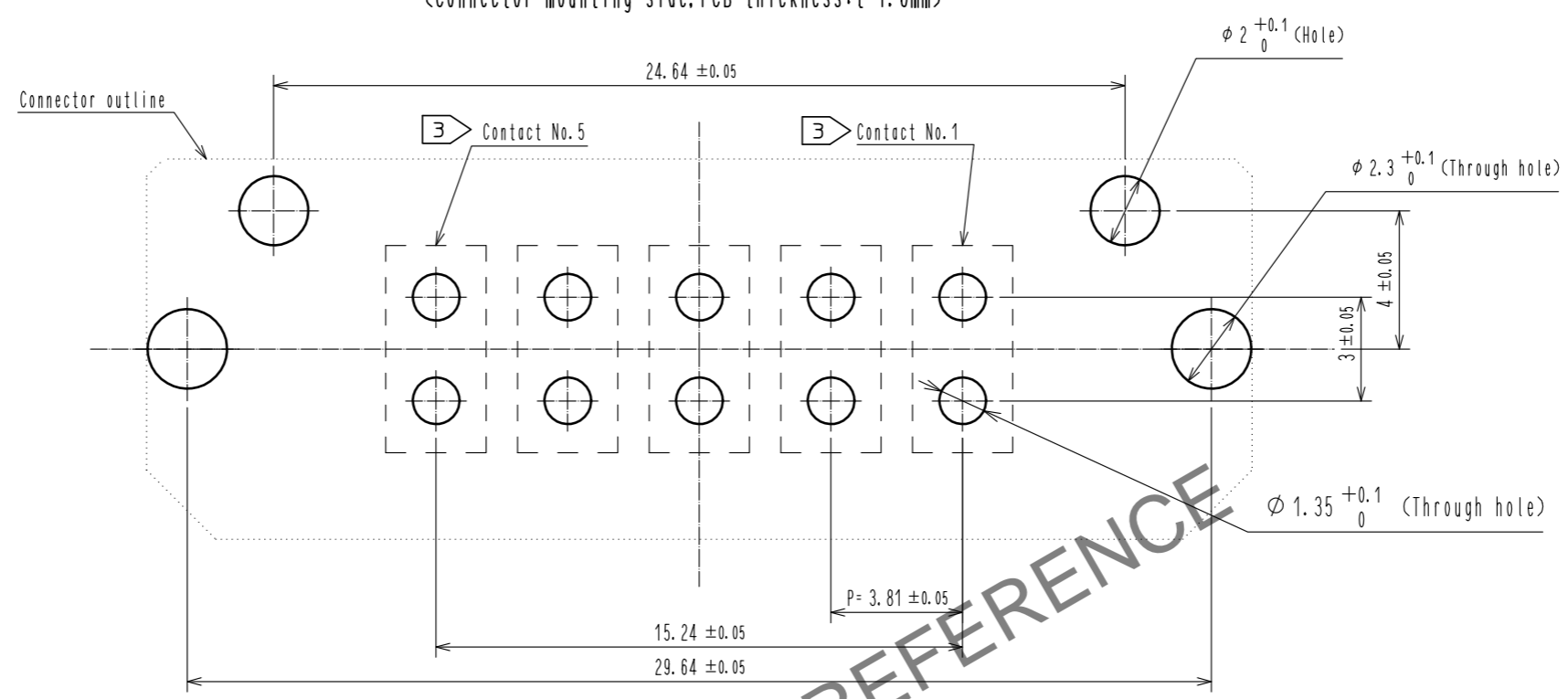
- Note
- 1 This product is packaged in tray. (35pcs/tray)
  - 2 Blemish and hit mark can be occurred through out the manufacturing process which doesn't affect quality level. Also, black spot could be observed on the surface of housing.
  - 3 For the contact No., adjacent two pairs of leads placed back-to-back (4 leads in total) compose one line.
  - 4 Misalignment absorbing range: ±0.3mm max.
  - 5 The dimension in parentheses are for references.
  - 6 Lot No. is indicated at either one of the position as shown.
  - 7 UL(File No. E52653)  
C-UL(File No. E52653)  
TUV(Certificate No. R50275872) authorization article.



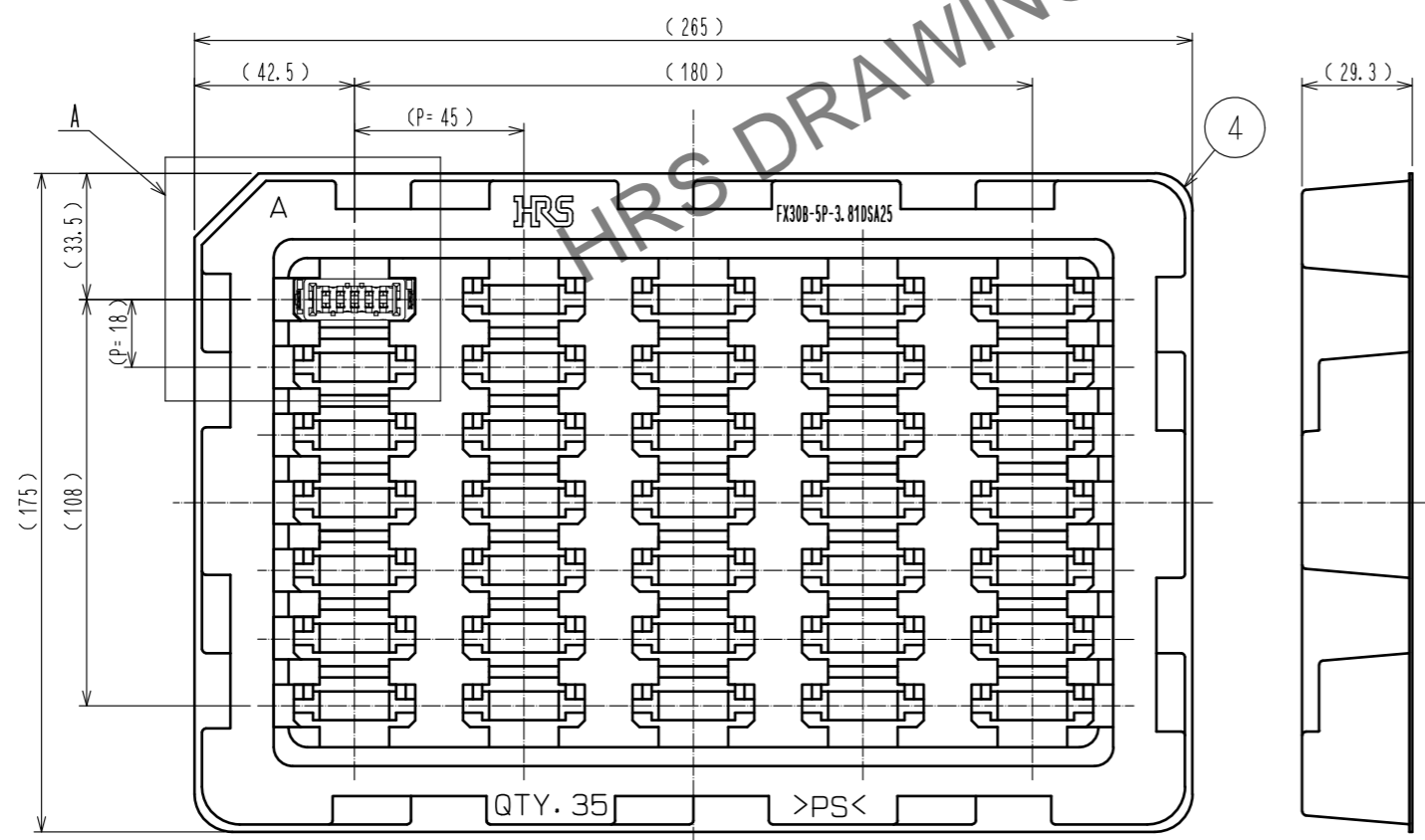
2	COPPER ALLOY	CONTACT AREA:GOLD-PLATING 0.1μm	4	POLYSTYRENE			
		LEAD AREA:TIN-PLATING 1.0μm					
		UNDER PLATING:NICKEL 1.0μm	3	PHOSPHOR BRONZE	TIN-PLATING 3.0μm		
1	POLYAMIDE	BLACK UL94V-0			UNDER PLATING:NICKEL 1.0μm		
NO.	MATERIAL	FINISH . REMARKS	NO.	MATERIAL	FINISH . REMARKS		
UNITS mm		SCALE 2 : 1	COUNT 1	DESCRIPTION OF REVISIONS DIS-F-00006019	DESIGNED AK. IWAHORI	CHECKED HT. YAMAGUCHI	DATE 20200406
<b>HRS</b> HIROSE ELECTRIC CO., LTD.		APPROVED : HS. OKAWA 20130313	DRAWING NO. EDC3-347262-00				
		CHECED : KI. HIROKAWA 20130312	PART NO. FX30B-5P-3. 81DSA25				
		DESIGNED : DK. AIMOTO 20130311	CODE NO. CL570-3203-6-00				
		DRAWN : DK. AIMOTO 20130311					

Jun.1.2024 Copyright 2024 HIROSE ELECTRIC CO., LTD. All Rights Reserved.  
 In case of consideration for using Automotive equipment / device which demand high reliability, kindly contact our sales window correspondents.

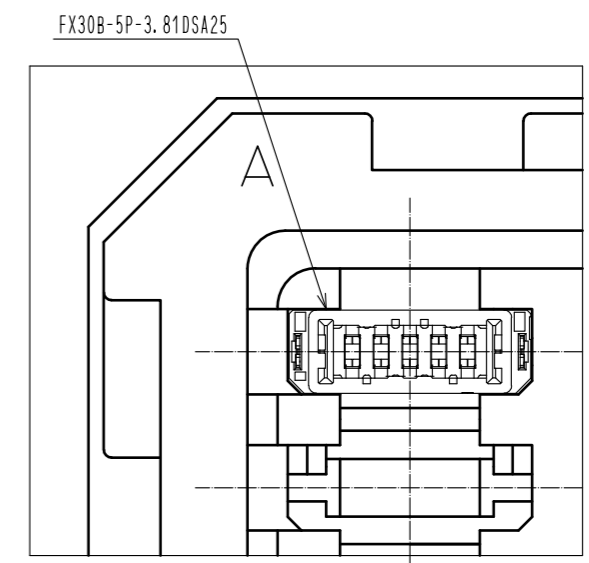
Recommended hole pattern dimension of PCB(5:1)  
 (Connector mounting side, PCB thickness:t=1.6mm)



1 Drawing for packaging(1:2)



A(1:1)



<b>HRS</b>	DRAWING NO.	EDC3-347262-00	2/2
	PART NO.	FX30B-5P-3.81DSA25	
	CODE NO.	CL570-3203-6-00	