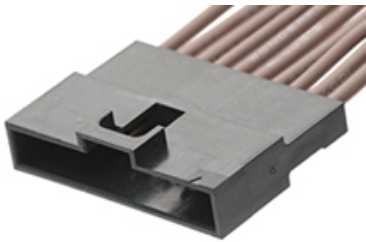




Part Number : [1510980007](#)
Product Description : 2.00mm Pitch Milli-Grid Plug Housing, 7 Circuits, Lead-Free, Black
Series Number : 151098
Status : Active
Product Category : Connector Housings



Documents & Resources


Drawings
[Drawing 1510980007_sd.pdf](#)
[Packaging Design Drawing PK-151098-0001-001.pdf](#)

3D Models and Design Files
[3D Model 1510980007_stp.zip](#)

Specifications
[Application Specification 503940001-AS-000.pdf](#)
[Product Specification PS-151098-0001-001.pdf](#)

Product Environment Compliance

Compliance

GADSL/IMDS	Not Relevant
China RoHS	
EU ELV	Compliant per 2000/53/EC
Low-Halogen Status	Low-Halogen per IEC 61249-2-21
REACH SVHC	Not Contained per D(2024)4144-DC (27 June 2024)
EU RoHS	Compliant per EU 2015/863

Multiple Part Product Compliance Statements
- Eu RoHS
- REACH SVHC
- Low-Halogen

Multiple Part Industry Compliance Documents
- IPC 1752A Class C
- IPC 1752A Class D

- Molex Product Compliance Declaration
- IEC-62474
- chemSHERPA (xml)

EU RoHS Certificate of Compliance

Part Details

General

Status	Active
Category	Connector Housings
Series	151098
Description	2.00mm Pitch Milli-Grid Plug Housing, 7 Circuits, Lead-Free, Black
Application	Signal, Wire-to-Wire
Product Family	Milli-Grid Connector System
Product Name	Milli-Grid
UPC	889056694360

Agency

CSA	LR19980
UL	E29179

Physical

Circuits (maximum)	7
Color - Resin	Black
Gender	Plug
Glow-Wire Capable	No
Keying to Mating Part	None
Lock to Mating Part	Yes
Material - Resin	PBT
Net Weight	0.722/g
Number of Rows	1
Packaging Type	Tray
Panel Mount	No
Pitch - Mating Interface	2.00mm
Pitch - Termination Interface	2.00mm

Polarized to Mating Part	Yes
Temperature Range - Operating	-40° to +70°C

Solder Process Data

Lead-Free Process Capability	N/A
------------------------------	-----

Mates With / Use With

Mates with Part(s)

Description	Part Number
Milli-Grid Single Row Receptacle Housings	<u>151100</u>

Use with Part(s)

Description	Part Number
Milli-Grid Male Crimp Terminals	<u>151087</u>