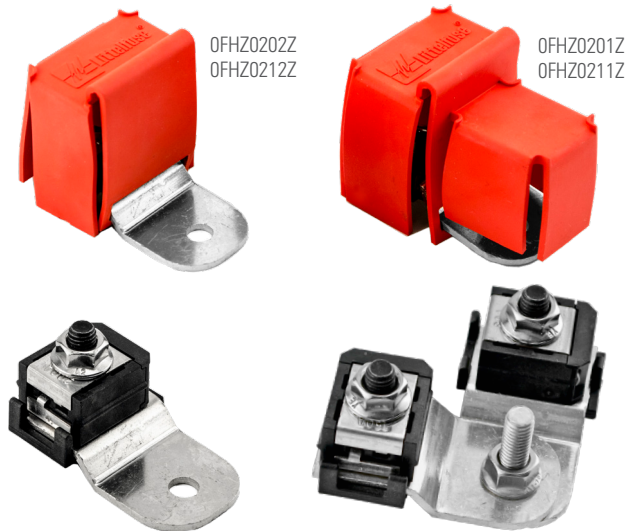


SMZ SERIES STUD MOUNT ZCASE® FUSE HOLDER

400A • 80V DC Max • ZCASE®



0FHZ0202Z
0FHZ0212Z

0FHZ0201Z
0FHZ0211Z

Shown without cover

Holders can be stacked for 2 pole
Fuses sold separately

Description

The SMZ stud mount fuse holder allows you to mount fusing directly to a M8 or M10 stud on applications such as batteries, alternators, battery switches or electrical relays. The SMZ series accepts the Littelfuse proprietary ZCASE fuse that is available in 40-600A ratings with similar characteristics to the MEGA® fuse. The SMZ stud mount fuse holder is ideal for stacking to create a 2 and 3 circuit version (see image above) and is secured to a stud using a standard M8 or M10 nut (sold separately). The insulated bolt on the busbar eliminates the traditional need for nylon nuts used on legacy CF8 fuses. The ZCASE fuses can be assembled using a standard M8 flange nut included with each part number.

The SMZ stud mount fuse holder features a compact design which saves space and eliminates the need to wire in a separate fuse holder or power distribution module. Additional circuits are added to the battery circuit directly on top of the ZCASE fuse with wired ring terminals. The fuse holder is available in 4 configurations, each with a red protective cover designed to reduce the risk of accidental contact with the fuse or battery terminal.

Ordering Information

Features and Benefits

- Mounts directly to a M10 or M8 stud
- Uses high amp ZCASE fuses, (M8) available 40-600A
- Tin plate coating on the busbar ensures corrosion resistance
- Fusing directly on the alternator, battery switch or relay reduces the number of wire connections and parts counts which helps to lower assembly times.
- ZCASE fuse holder uses an isolated stud so any standard M8 nut can be used (included), simplifying replacement and repair

Specifications

Voltage Rating:	80 V DC or max rating of the fuse
Max Continuous Current:	400A
Available Fuse Rating:	40- 600A
Fuse Terminal Torque:	M8 Nut: 14 ± 2 Nm
Operating Temp:	-40° to 105° C

Applications

- Mounts directly to a stud style battery terminal or alternator stud
- Mounts directly to a battery switch or relay stud
- Consolidate multiple fuseholders and reduce wiring
- High amperage starter circuit protection

Recommended Fuse



ZCASE® 40-600A Bolt-Down Fuses

Web Resources

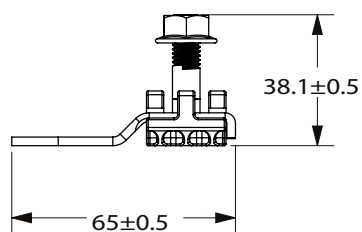
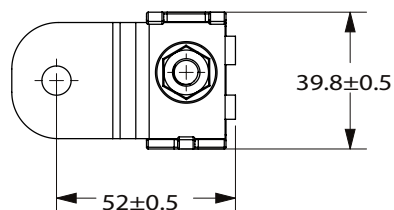
Download 2D print, 3D model and more at:
littelfuse.com/smz

PART NUMBER	MOUNTING HOLE SIZE	FUSE TERMINAL NUT (M8)	COVER STYLE	
			901-525 FUSE/STUD COVER	901-524 FUSE COVER
0FHZ0201Z	M8 (8.5mm)	•	•	
0FHZ0202Z	M8 (8.5mm)	•		•
0FHZ0211Z	M10 (10.5mm)	•	•	
0FHZ0212Z	M10 (10.5mm)	•		•

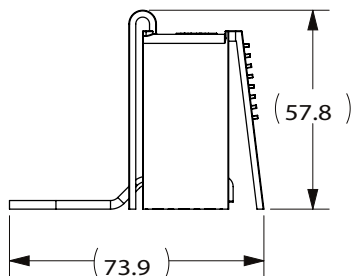
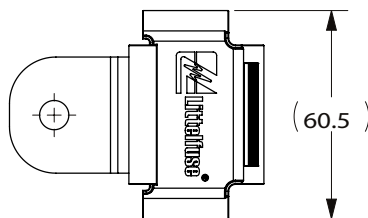
SMZ SERIES STUD MOUNT ZCASE® FUSE HOLDER

Dimensions in millimeters

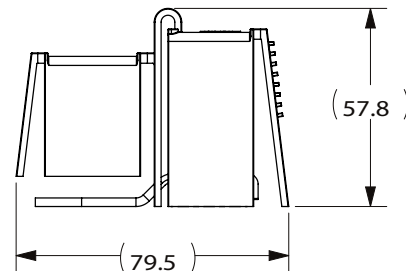
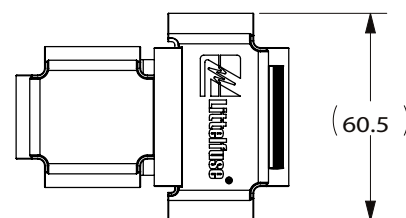
SMZ Series Without Cover



With Fuse Cover
0FHZ0202Z & 0FHZ0212Z



With Fuse and Stud Cover
0FHZ0201Z & 0FHZ0211Z



Related Products

ZCASE® • 40-600A • Bolt-Down Fuses

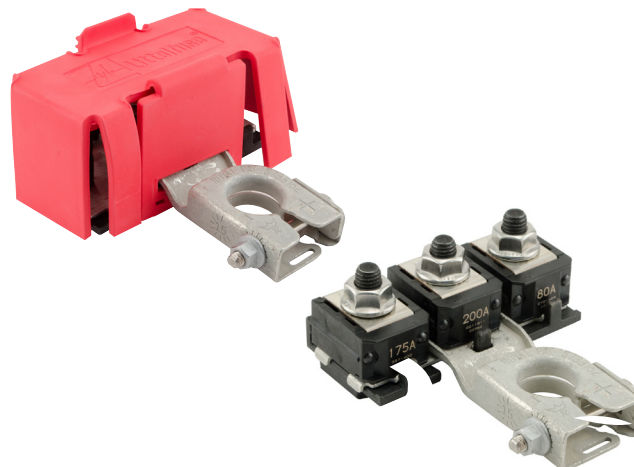
The ZCASE is a bolt down fuse with a wide rating range up to 600A. The Time Current characteristic is similar to the well known MEGA® design and can be used as full wire protection until 250A. Higher ratings typically used for starter fuse.

Learn more at: littelfuse.com/ZCASE

BMZ Series Battery Post Mount ZCASE® Fuse Holder

The BMZ fuse holder allows you to mount fusing directly to a post style battery without any special hardware. The isolated bolts eliminate the traditional need for nylon nuts and fuses can be assembled using standard M8 threaded hardware.

Learn more at: littelfuse.com/BMZ



Visit Littelfuse.com for the most up-to-date product information. Littelfuse reserves the right to make product changes, without notice. Material in this document is as accurate as known at the time of publication.

Mouser Electronics

Authorized Distributor

Click to View Pricing, Inventory, Delivery & Lifecycle Information:

[Littelfuse:](#)

[0FHZ0201Z](#) [0FHZ0211Z](#) [0FHZ0212Z](#) [0FHZ0202Z](#)