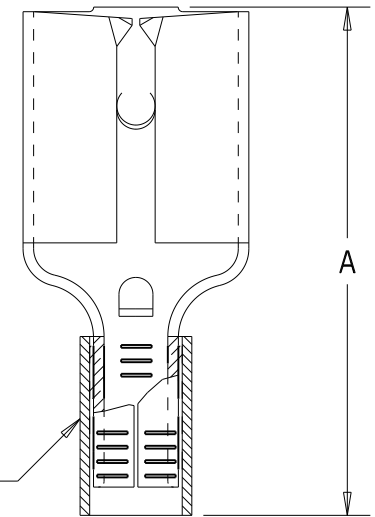
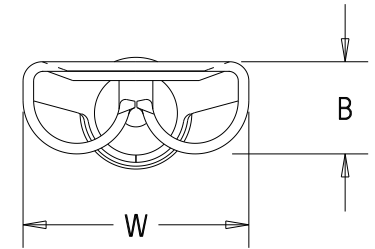


Part number	Tab size	Wire range AWG	Dimensions in.		
			A $\begin{smallmatrix} +/- .03 \\ (.8) \end{smallmatrix}$	B $\begin{smallmatrix} +/- .01 \\ (.3) \end{smallmatrix}$	W $\begin{smallmatrix} +/- .01 \\ (.3) \end{smallmatrix}$
D18-250	.250 X .032 (6.3 X 0.8)	22-18	.66 (16.8)	.12 (3.0)	.30 (7.6)
*D14-250	.250 X .032 (6.3 X 0.8)	16-14	.66 (16.8)	.12 (3.0)	.30 (7.6)
D10-250	.250 X .032 (6.3 X 0.8)	12-10	.72 (18.3)	.12 (3.0)	.30 (7.6)



\* UL RECOGNIZED ONLY

Notes:

- Used for:
  - 302° (150° C) maximum temperature rating
  - Stranded copper wire only
- First insertion force : 12 Lb (53N) maximum  
First withdrawal force: 12 Lb (53N) maximum  
6 Lb (27N) minimum
- Installation tools:
  - UL listed & CSA certified: CT-100,CT-100A,CT-200,CT-570,CT-600-A(D10-250 ONLY)  
CT-1570,CT-2457CH, CT-2500
  - UL recognized : CT-100,CT-100A,CT-200,CT-570,CT-600-A, CT-1570,CT-2457CH,CT-2500
  - Panduit approved : CT-160, CT-260
- Wire strip length:  $9/32 \begin{smallmatrix} +1/32 \\ -0 \end{smallmatrix}$  (7.1  $\begin{smallmatrix} +.8 \\ -0 \end{smallmatrix}$ )
- Material:
  - Stamping: .016" (0.41) thick tin plated brass  
D18-250 & D14-250  
.018" (0.46) thick tin plated brass  
D10-250 only
  - Sleeve : Tin plated brass
- SEE [www.panduit.com](http://www.panduit.com)  
FOR PART NUMBER SUFFIX DESIGNATION  
FOR PACKAGE SIZE
- Dimensions in brackets are in millimeters



LISTED  
20H3  
E78522



CERTIFIED  
LR31212



RECOGNIZED  
E78522

**PANDUIT**

CORP.

TINLEY PARK, ILLINOIS

Non-insulated, sleeved barrel female disconnect (.250 series)

13	8/11	SHOR	ADDED INSTALLATION TOOLS, UPDATED UL RECOGNIZED SYMBOL
12	7-11	SB	Added suffix part number designation for package size
REV	DATE	BY	DESCRIPTION

DRAWN BY DAW	CHK'D RS	SCALE None	DRAWING NO. A41304
-----------------	-------------	---------------	-----------------------

# Mouser Electronics

Authorized Distributor

Click to View Pricing, Inventory, Delivery & Lifecycle Information:

[Panduit:](#)

[D18-250-M](#) [D10-250-D](#) [D18-250-C](#) [D14-250-M](#) [D14-250-C](#) [D14-250-MY](#) [D10-250-DY](#) [D14-250-CY](#) [D10-250-L](#)