

Bulgin's broad line of pushbutton switches are available in various sizes and configurations. This includes a variety of illumination and terminal options as well as several with high inductive power ratings suitable for motor driven applications. These switches can be found in many markets including home appliances, commercial, medical, audio and security.

- Miniature, round and rectangular push button switches available
- Ratings up to 16A, 250V ac
12(12)A 250V ac rating also available
- Latching and momentary actions
- Choice of actuators
(custom option also available)
- Square and Round Mounting Styles



Front Panel Mounting



MP0012/Col

- 22mm diameter
- Prominent Button
- S.P. Push to Make
- Screw Terminals
- Brass, Chrome Plated Body, Glass Filled Nylon Button



Front Panel Mounting



MP0012/1/Col

- 22mm diameter
- Recessed Button
- S.P. Push to Make
- Screw Terminals
- Brass, Chrome Plated Body, Glass Filled Nylon Button



Rear Panel Mounting



MP0016

- S.P. Push to Make
- Solder Tags
- 1A, 28Vac/dc
- Brass Nickel Plated Body, Glass Filled Nylon Button



| Specifications | MP0012/Colour | MP0012/1/Colour | MP0016/Colour |
|---------------------------|---|---|---|
| Terminations: | Screw Terminals | Screw Terminals | Solder Tags |
| Switching: | S.P. Push to Make Slow Momentary Action | S.P. Push to Make Slow Momentary Action | S.P. Push to Make Slow Momentary Action |
| Max. Rating: | 0.25A. 250Vac, 1A. 110Vac, 2A. 12Vac/dc | 0.25A. 250Vac, 1A. 110Vac, 2A. 12Vac/dc | 1A 28Vac/dc (non-inductive) |
| Contact Resistance: | <15mΩ | <15mΩ | <15mΩ |
| Insulation Resistance: | >10 ⁴ MΩ | >10 ⁴ MΩ | >10 ⁴ MΩ |
| Dielectric Strength: | >2.5kVac | >2.5kVac | >2.0kVac |
| Operating Temp. Range: | -20°C to +85°C | -20°C to +85°C | -20°C to +85°C |
| Operation Pressure (typ): | 9.18 newtons | 9.18 newtons | 6.22 newtons |
| Materials | | | |
| Moulding: | Glass Filled Nylon Brass, | Glass Filled Nylon Brass, | Glass Filled Nylon Brass, |
| Body: | Brass, Chrome Plated | Brass, Chrome Plated | Brass, Chrome Plated |
| Contacts/Terms: | Brass, Silver Plated | Brass, Silver Plated | Brass, Silver Plated |
| Variant | Button Colour: Standard - Black, /RD (Red) | Button Colour: Standard - Black, /RD (Red) | Button Colour: Standard - Black, /RD (Red) |
| RoHS | Compliant | Compliant | Compliant |

8300 Series Push Button

8(8)A 250Vac & 12(12)A 250Vac



Key Features

- Miniature push button
- 8A Inductive current rating
- Ratings up to 12(12)A, 250V ac (H suffix)
- Illuminated and nonilluminated
- Single and double pole
- Latching and momentary
- Slotted actuator for custom buttons
- Industry standard panel cutout
- Panel cut out: 19.3 x 12.9

Approvals and specifications

16(4)A 250Vac T85, 1E4 (10,000 Operations)
 12(12)A 250Vac T105, 1E4 (10,000 Operations)
 8(8)A 250Vac T105, 5E4 (50,000 Operations)
 6(6)A 250Vac T125, 5E4 (50,000 Operations)

8350, 8351, 8353, 8354
 12A 250Vac DR, 250Vac 1hp, 125Vac 1/2hp

8300, 8301, 8303, 8304
 13A 250Vac SP, 250Vac 1hp, 125Vac 1/2hp

UL 85°C, file E45221, CSA file LR10990

In house test:
10(10)A 250Vac—Indicative rating only

3mm contact gap.

| Terminal | Function | Actuator | Body Code | Body Colour | | | | | | | | |
|-----------------|---|---|---|---------------------------|-------------|-----------|-----------|-----------|-----------|-----------|-----------|--|
| <p>C</p> | <p>Approvals & ratings vary with function Single pole switches use terminals 1 & 2 (& 3)</p> | | Panel cut-out ** Bezel | | | | | | | | | |
| | <p>8300 Single Pole ON - OFF</p> | <p>A Standard actuator</p> | <p>B Standard body</p> | <p>B Black</p> | | | | | | | | |
| | <p>8301 Single Pole ON - OFF (momentary ON)</p> | <p>H Slotted for custom caps</p> | | <p>W White</p> | | | | | | | | |
| <p>H</p> | | <p>Slots for snap-in buttons</p> | <p>E Softline style body with radiused bezel</p> <p>Cut-outs must be punched in the direction of insertion</p> | | | | | | | | | |
| | <p>8303 Single Pole ON - OFF With Light</p> | <p>C Square actuator</p> | | | | | | | | | | |
| <p>A</p> | | <p>E Radiused actuator</p> | <p>Dimensions for snap-in fixing</p> <table border="1"> <thead> <tr> <th>Panel thickness</th> <th>Dimension X</th> </tr> </thead> <tbody> <tr> <td>0.75-1.24</td> <td>19.1/19.2</td> </tr> <tr> <td>1.25-1.99</td> <td>19.3/19.4</td> </tr> <tr> <td>2.00-3.00</td> <td>19.7/19.8</td> </tr> </tbody> </table> <p>X and V PCB terminals. Additional dummy terminals may be supplied for extra support.</p> | Panel thickness | Dimension X | 0.75-1.24 | 19.1/19.2 | 1.25-1.99 | 19.3/19.4 | 2.00-3.00 | 19.7/19.8 | |
| Panel thickness | Dimension X | | | | | | | | | | | |
| 0.75-1.24 | 19.1/19.2 | | | | | | | | | | | |
| 1.25-1.99 | 19.3/19.4 | | | | | | | | | | | |
| 2.00-3.00 | 19.7/19.8 | | | | | | | | | | | |
| | <p>8304 Single Pole ON - OFF (momentary ON) with light</p> | <p>F Small round actuator</p> | | | | | | | | | | |
| | <p>8350 Double pole ON - OFF</p> | <p>J Smooth curved actuator</p> | | | | | | | | | | |
| <p>K</p> | | <p>M</p> | | | | | | | | | | |
| | <p>8351 Double pole ON - OFF (momentary ON)</p> | <p>D Large round actuator</p> | | | | | | | | | | |
| | <p>8353 Double pole ON - OFF With light</p> | | | | | | | | | | | |
| | <p>8354 Double pole ON - OFF (momentary ON) with light</p> | | | | | | | | | | | |
| <p>T</p> | | | | | | | | | | | | |
| | <p>8355 Single pole ON - OFF Isolated light - switched C, E & M actuators only</p> | | | | | | | | | | | |
| | <p>8356 Single pole ON - OFF Isolated light - unswitched C, E & M actuators only</p> | | | | | | | | | | | |
| <p>X</p> | | | | | | | | | | | | |
| | <p>V</p> | | | | | | | | | | | |

Dimensions

Actuator A
Body B



Actuator J
Body E



Examples



H8350AB ---
T8350AB ---



H8353JE ---
T8353JE ---



H8353EB ---
T8353EB ---



H8353CB ---
T8353CB ---

| Actuator Colour | Lamp Voltage | Legend | Legend Colour | Options |
|-------------------|-----------------------------|--------|---------------|--|
| LIT | | | | |
| A Amber | — None | | | <p>H 12(12)A 250Vac switch rating</p> <p>Finish Matt finish standard except on J and D actuators which are gloss</p> <p>Colour Call sales for custom colours A full range is available for large orders</p> <p>Legend printing Select from the examples or call sales for custom legends.</p> <p>Special buttons Some of the many options are shown Call sales for the full range</p> <p>L167 Protective cover</p>  <p>Snaps on to switch bodies fitted with "A" or "J" style actuators, this reduces panel thickness by 0.8mm</p> <p>BioCote Antimicrobial Additive Moulded components have antimicrobial properties using BioCote silver ion technology.</p> |
| C Clear | 2 125V Neon | | | |
| G Green | 3 250V Neon | | | |
| R Red | 7 12V Filament | | | |
| UNLIT | 8 24V Filament | | | |
| B Black | | | | |
| R Red | | | | |
| W White | | | | |

8200 Series Push Button

8(8)A 250Vac & 12(12)A 250Vac



Key Features

- ⬡ Miniature push button
- ⬡ 8A Inductive current rating
- ⬡ Ratings up to 12(12)A, 250V ac (H suffix)
- ⬡ Without button
- ⬡ Sub panel mount
- ⬡ Push on, solder or PCB terminals
- ⬡ Latching and momentary

Approvals and specifications

- ⚡ 16(4)A 250Vac T85, 1E4 (10,000 Operations)
- 12(12)A 250Vac T105, 1E4 (10,000 Operations)
- 8(8)A 250Vac T105, 5E4 (50,000 Operations)
- 6(6)A 250Vac T125, 5E4 (50,000 Operations)

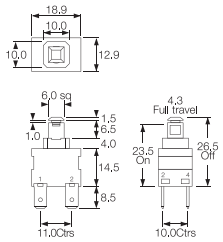
12A 250Vac
250Vac 1hp, 125Vac 1/2hp
 UL 85°C, file E45221, CSA file LR10990

3mm contact gap.

| Terminal | Function | Actuator | Body Code |
|---|---|--|--|
| <p>C</p> <p>6.3 x 0.8 10.1</p> | <p>1 2 3 4</p> <p>Approvals & ratings vary with function Single pole switches use terminals 1 & 2 (& 3)</p> <p>8200 Single Pole ON - OFF</p> | <p>A</p> <p>Standard actuator for snap-on custom adaptors</p> <p>8.0</p> | <p>A</p> <p>Standard body</p> |
| <p>H</p> <p>4.8 x 0.8 8.5</p> <p>A</p> <p>7.6</p> <p>As "H" but right angle 4.8 x 0.8</p> | <p>8201 Single Pole ON - OFF (momentary ON)</p> | <p>B</p> <p>Flat top actuator</p> <p>5.5</p> | <p>See dimensioned drawings for details</p> |
| <p>K</p> <p>2.8 x 0.8 8.5 2.6 1.5</p> | <p>8250 Double Pole ON - OFF</p> | <p>C</p> <p>Curved top actuator</p> <p>8.0</p> <p>Examples of possible actuation methods</p> <p>Using a Snap on adaptor</p> | <p>C</p> <p>As standard body but with side support peg for use with M PCB terminals</p> <p>X and V PCB terminals. Additional dummy terminals may be supplied for extra support.</p> |
| <p>T</p> <p>2.6 1.5 7.0</p> <p>Solder</p> <p>V</p> <p>3.7 Ctrs 4.3</p> <p>Dual pin PCB (Call sales for mounting dims)</p> | <p>8251 Double Pole ON - OFF (momentary ON)</p> | <p>Using a Hinged Actuator</p> | |
| <p>X</p> <p>PCB 0.8 Sq 7.0 4.5</p> | | | |

Dimensions

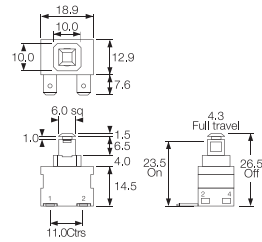
'A' body with 'H' 4.8 terminals



Example of possible mounting styles



'A' body with 'A' right angle 4.8 terminals

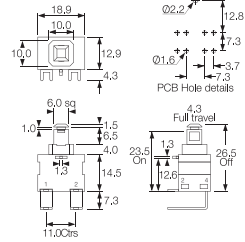


Alternative Actuator



Impact washer resists damage from excessive operator force

'C' body with 'M' right angle PCB terminals



Examples



C8250AA ---
with impact
washer M1226



X8201AA ---



K8200AA ---



A8200AA ---



M8200AC ---



Example of M8200AC

7000 Series Push Button

16A 250Vac



Key Features

- Round and rectangular push button switches
- Ratings up to 16A, 250V ac
- Latching and momentary
- Illuminated & non-illuminated
- Matching indicators
- Low profile version
- Panel cut outs: 25.0 dia 27.2 x 22.3

Approvals and specifications

- CE 16(4)A 250Vac T125
8(8)A 250Vac T85
- UL CSA 16A Non Ind, 250Vac 1hp, 125Vac 1/2hp
UL 65°C, file no. E45221, CSA file no. LR10990
3mm contact gap.

| Terminal | Function | Actuator | Body Code |
|--|--|---|---|
| <p>C</p>  <p>6.3 x 0.8</p> <p>H</p>  <p>4.8 x 0.8</p> | <p>1 2 3 4 Approvals & ratings vary with function Single pole switches use terminals 1 & 2 (& 3)</p> <p>7000 Single Pole ON - OFF</p>   <p>7001 Single Pole (momentary) ON - OFF</p>   <p>7003 Single Pole (with light) ON - OFF</p>   <p>7004 Single Pole (momentary) with light ON - OFF</p>   <p>7050 Double Pole ON - OFF</p>   <p>7051 Double Pole with light ON - OFF</p>   <p>7053 Double pole with light ON - OFF</p>   <p>7054 Double pole (momentary ON) with light ON - OFF</p>   <p>7030 Indicator UL E63363 CSA LR29381</p>   | <p>A Round actuator shown in F body</p>  <p>A Round actuator shown in G body</p>  <p>B Round actuator - medium shown in F body</p>  <p>C Round actuator - long shown in F body</p>  <p>D Round actuator - sub panel mount</p>  <p>S Rectangular actuator Shown in "A" body N/A for 7030</p>  | <p>Panel cut-outs</p> <p>F H G</p> <p>Body types fit either cut-out</p>  <p>25.0/25.2</p>  <p>Ø23.5/23.7 21.0 Ø25.0/25.2</p> <p>A</p>  <p>27.2 27.3 22.3/22.4</p> <p>Cut-outs must be punched in the direction of insertion</p> |

Dimensions

Panel thickness:

A - 0.8 - 2.5mm

F, G, H - 0.8 - 5.0mm



Examples



C7000AF ---



C7003AF ---



C7050SA ---



C7053AG ---

| Body Colour | Actuator Colour | Lamp Voltage | Legend | Legend Colour | Options |
|-------------------|-------------------|-----------------------------|--------|---------------|---|
| B Black | A Amber | — None | | | <p>Finish Matt finish is standard on bodies. Gloss finish is standard on actuators.</p> <p>Colour Call sales for custom colours. A full range is available for large orders.</p> <p>Legend printing A wide range is available or call sales for custom legends.</p> <p>Lamp voltage Call sales for details of available voltages.</p> <p>Weatherproof housing (E) Additional housing which fits round body switches with an oversize housing with a clear silicone cover designed to IP65. Mounting hole dia: 38.0mm</p> |
| W White | C Clear | 2 125V Neon | | | |
| | G Green | 3 250V Neon | | | |
| | R Red | 7 12V Filament | | | |
| | | 8 24V Filament | | | |
| | UNLIT | | | | |
| | B Black | | | | |
| | R Red | | | | |
| | W White | | | | |

0911 Push Button Switches

0.5A 250Vac



Key Features

- Snap action switches
- Ratings up to 16A, 250Vac
- Round and rectangular buttons

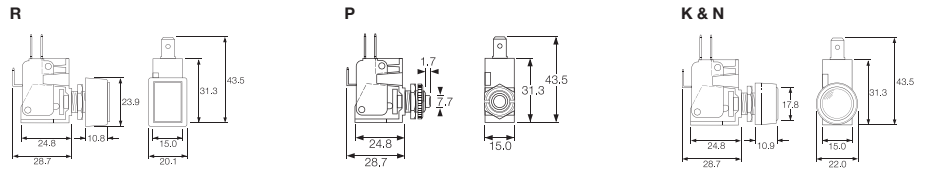
Approvals and specifications

16(4)A 250Vac 5E4 T85

16A 125/250Vac 3/4hp T85 50E3
125V 1/2 HP, 250V 3/4 HP, 0.4A 125Vdc, 0.2A 250Vdc

Approvals apply to switch mechanism only.
μ contact gap.

Dimensions



| Terminal | Function | Actuator | Body Code | Options |
|----------|--|--|--|--|
| | <p>0911 (momentary) ON - ON</p> | <p>R Rectangular bezel</p> <p>P Short</p> <p>K with satin chrome bezel</p> <p>N with nylon bezel</p> | <p>Panel Cut-out</p> <p>Panel thickness Both nuts 2.5mm No backnut 4.0mm</p> | <p>Call factory for custom colours</p> |



Key Features

- Self wiping contacts
- Slow make & break
- Momentary action
- Choice of switch circuits
- Choice of actuators

Approvals and specifications

In house test:
0.5A 250Vac T85 – Indicative rating only

Dimensions

Dimensions (mm) Nylon S and L actuators



Neck thread - 40 TPI Whit. Actuator travel - 2.5 max

Stainless steel V actuator (IP66)



Neck thread - 26 TPI Whit. Actuator travel - 2.5 max

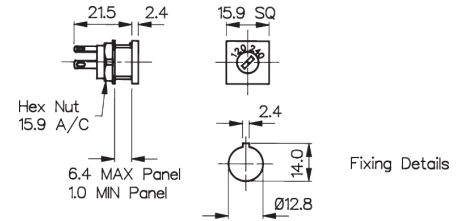
| Terminal | Function | Actuator | Body Code | Options |
|-----------------|--|---|--|---|
| <p>T</p> | <p>0916</p> <p>Black base SP ON - OFF (momentary)</p> | <p>S Small Actuator</p> | <p>7.1</p> | <p>Finish</p> <p>Gloss finish for L and S actuators.</p> |
| | <p>0917 50V only</p> <p>Brown base SP ON - OFF (momentary 1 side)</p> | <p>L Large Actuator</p> | <p>Panel Cut-out (L & S Actuators)</p> <p>Panel thickness Both nuts - 2.5mm No Backnut - 4.0</p> | <p>Colour</p> <p>Call sales for custom colours. A full range is available for large orders.</p> |
| | <p>0918</p> <p>White base SP ON - OFF (momentary OFF)</p> | <p>V Vandal Resistant IP66 Flattop Stainless Steel</p> | <p>19.2</p> | |
| | <p>0919</p> <p>Black base DP ON - OFF (momentary 1 side)</p> | <p>Panel Cut-out (Stainless Steel V Actuator) Panel thickness - 8.0mm</p> | | |
| | <p>0920</p> <p>White base DP ON - OFF (momentary ON)</p> | | | |

120/140V Voltage Selector



VS0001

- 2.8 series tabs/solder tags
- Square Front Bezel
- 6.3A
- CSA & VDE approvals

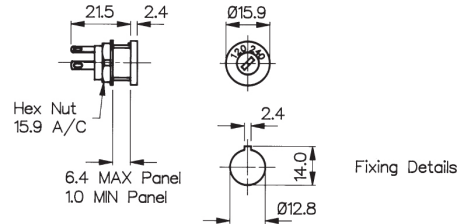


120/140V Voltage Selector



VS0002

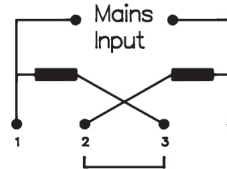
- 2.8 series tabs/Solder tags
- Round Front Bezel
- 6.3A
- CSA & VDE approvals



Connection Parallel 120V



Connection Series 240V



Specifications

VS0001

VS0002

| | | |
|------------------------|------------------------------------|------------------------------------|
| Max. Rating: | 6.3A, 120 / 240 | 6.3A, 120 / 240 |
| Insulation Resistance: | >106 MΩ | >106 MΩ |
| Termination: | 2.8 series tabs/solder tags | 2.8 series tabs/solder tags |
| Temperature Range: | -20°C to +85°C | -20°C to +85°C |
| Materials: | | |
| Mouldings: | Glass Filled Nylon UL94V-1 | Glass Filled Nylon UL94V-1 |
| Tags: | Brass, Silver Plated | Brass, Silver Plated |
| Contacts: | Copper Silver Alloy | Copper Silver Alloy |
| Approvals: | | |
| Variants: | Other markings, details on request | Other markings, details on request |
| | RoHS | Compliant |

Mouser Electronics

Authorized Distributor

Click to View Pricing, Inventory, Delivery & Lifecycle Information:

Bulgin:

[3832510V](#) [3852510KBL](#) [3852510MG](#) [C7001AFBR](#) [H8350RP-W](#) [3832510MBL](#) [A8200AA](#) [C7001AGBW](#)
[C7003AFBR3](#) [C7003AGBG2](#) [C7050AFBB](#) [C7051AFBR](#) [A8300ABBB](#) [C7053AFBG2](#) [C7053AFBR2](#) [H8301ABBB-B](#)
[H8301RP](#) [H8303ABBA7](#) [A8200BA](#) [C7003AFBR7](#) [C7050AFBR](#) [H8300ABBB-B](#) [H8350ABBB](#) [3852510KB](#)
[C7001AFBW](#) [C7003SABR7](#) [C7004AFBG2](#) [3832510PR](#) [3832510KBL](#) [3832510MR](#) [C7000AFBB](#) [C7001AGBB](#)
[H8303ABBG7](#) [H8353ABBR2](#) [T916SB](#) [C7001AFBB](#) [C7030AHBA7](#) [H8350ABBB-G](#) [H8350ABBR](#) [H8350ABBR-B](#)
[T916SR](#) [3832510MW](#) [C7001SABR](#) [C7051SABBL](#) [H8350ABBB-B](#) [H8351ABBB](#) [H8351RP](#) [3832510KW](#) [3832510MB](#)
[C7003AFBG7](#) [H8301ABBB](#) [H8500POB](#) [A1048OAAAA](#) [C7051SABC](#) [H8351ABBB-B](#) [3832510KB](#) [3832510MG](#)
[C7003AFBR2](#) [3832510KG](#) [3832510KR](#) [A8301RP](#) [C7003AFBG2](#) [T920SB](#) [C7051SABR](#)