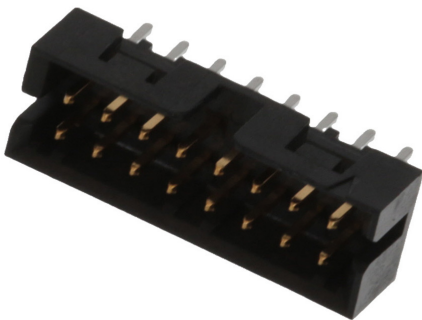




**Part Number :** [878311620](#)  
**Product Description :** 2.00mm Pitch, Milli-Grid PCB Header, Dual Row, Vertical, Through Hole, Shrouded, 16 Circuits, 0.38µm Gold (Au) Plating, with Center Polarization Slot, with Locking Window, without PCB Locator, Tube  
**Series Number :** 87831  
**Status :** Active  
**Product Category :** PCB Headers and Receptacles



Documents & Resources


**Drawings**  
[Drawing 878311620\\_sd.pdf](#)  
[Packaging Design Drawing PK-87831-001-001.pdf](#)

**3D Models and Design Files**  
[3D Model 878311620\\_stp.zip](#)

**Specifications**  
[Application Specification 503940001-AS-000.pdf](#)  
[Product Specification PS-87831-027-001.pdf](#)

Product Environment Compliance

Compliance

GADSL/IMDS	Compliant with Exemption 44; 34; 33
China RoHS	
EU ELV	Not Relevant
Low-Halogen Status	Not Low-Halogen per IEC 61249-2-21
REACH SVHC	Not Contained per D(2024)4144-DC (27 June 2024)
EU RoHS	Compliant per EU 2015/863

- Multiple Part Product Compliance Statements
- Eu RoHS
  - REACH SVHC
  - Low-Halogen

## Multiple Part Industry Compliance Documents

- IPC 1752A Class C
- IPC 1752A Class D
- Molex Product Compliance Declaration
- IEC-62474
- chemSHERPA (xml)

## EU RoHS Certificate of Compliance

---

### Part Details

#### General

Status	Active
Category	PCB Headers and Receptacles
Series	87831
Description	2.00mm Pitch, Milli-Grid PCB Header, Dual Row, Vertical, Through Hole, Shrouded, 16 Circuits, 0.38µm Gold (Au) Plating, with Center Polarization Slot, with Locking Window, without PCB Locator, Tube
Application	Signal, Wire-to-Board
Comments	Contact Molex for application in automotive industry
Component Type	PCB Header
Product Family	Milli-Grid Connector System
Product Name	Milli-Grid
UPC	822348274109

#### Agency

CSA	LR19980
UL	E29179

#### Electrical

Current - Maximum per Contact	2.0A
Voltage - Maximum	125V

#### Physical

Breakaway	No
-----------	----

Circuits (Loaded)	16
Circuits (maximum)	16
Color - Resin	Black
Durability (mating cycles max)	100
First Mate / Last Break	No
Flammability	94V-0
Glow-Wire Capable	No
Guide to Mating Part	No
Keying to Mating Part	None
Lock to Mating Part	Yes
Material - Metal	Phosphor Bronze
Material - Plating Mating	Gold
Material - Plating Termination	Tin
Material - Resin	Nylon
Net Weight	0.749/g
Number of Rows	2
Orientation	Vertical
Packaging Type	Tube
PC Tail Length	2.50mm
PCB Locator	No
PCB Retention	None
PCB Thickness - Recommended	1.60mm
Pitch - Mating Interface	2.00mm
Pitch - Termination Interface	2.00mm
Plating min - Mating	0.381µm
Plating min - Termination	1.905µm
Polarized to PCB	No
Shrouded	Yes
Stackable	No
Temperature Range - Operating	-55° to +105°C
Termination Interface Style	Through Hole

#### Solder Process Data

Max-Duration	10
Lead-Free Process Capability	WAVE

Max-Cycle	1
Max-Temp	260

---

## Mates With / Use With

### Mates with Part(s)

Description	Part Number
Milli-Grid Dual Row Receptacle Housings	<u>51110</u>
Milli-Grid Vertical Through Hole PCB Receptacles	<u>78787</u>
Milli-Grid Top Entry Surface Mount PCB Receptacles	<u>78788</u>
Milli-Grid Vertical Through Hole PCB Receptacles	<u>79107</u>
Milli-Grid Vertical Through Hole PCB Receptacles	<u>79108</u>
Milli-Grid Top/Bottom Entry Surface Mount PCB Receptacles	<u>79109</u>
Milli-Grid Dual Row Cable-to-Board Receptacles	<u>87568</u>