

FL SWITCH SFNT 6TX/2FX - Industrial Ethernet Switch



2891025

<https://www.phoenixcontact.com/us/products/2891025>

Please be informed that the data shown in this PDF document is generated from our online catalog. Please find the complete data in the user documentation. Our general terms of use for downloads are valid.



Wide-temperature Ethernet switch, 6 TP RJ45 ports, 2 FO ports, 100 Mbps full duplex in SC-D format, automatic detection of data transmission speed of 10 or 100 Mbps (RJ45), autocrossing function, autocrossing function, reads QoS priority messages, accepts security frames

Your advantages

- QoS-prioritized (Quality of Service) messages
- RJ45 ports support a transmission speed of 10/100 Mbps
- Fiber-optic ports support 100 Mbps
- Wide operating temperature range of -40 °C ... 75 °C
- Local diagnostic indicators with LEDs
- Alarm contact for power supply and link status diagnostics
- The switch also offers cable locking and port blocking
- Auto negotiation and autocrossing detection simplifies installation and setup

Commercial data

Item number	2891025
Packing unit	1 pc
Sales key	DN19
Product key	DNN113
Catalog page	Page 297 (C-6-2019)
GTIN	4046356587969
Weight per piece (including packing)	648 g
Weight per piece (excluding packing)	484 g
Customs tariff number	85176200
Country of origin	TW

FL SWITCH SFNT 6TX/2FX - Industrial Ethernet Switch



2891025

<https://www.phoenixcontact.com/us/products/2891025>

Technical data

Dimensions

Width	50 mm
Height	130 mm
Depth	100 mm

Notes

Utilization restriction

CCCex note	Use in potentially explosive areas is not permitted in China.
------------	---

Material specifications

Housing material	Aluminum
------------------	----------

Mounting

Mounting type	DIN rail mounting
---------------	-------------------

Interfaces

Ethernet (RJ45)

Connection method	RJ45
Note on the connection method	Auto negotiation and autocrossing
Transmission speed	10/100 Mbps
Transmission physics	Ethernet in RJ45 twisted pair
Transmission length	100 m (per segment)
Signal LEDs	Data receive, link status
No. of channels	6 (RJ45 ports)

Fiber optic interface

Connection method	SC
Transmission speed	100 Mbps (full duplex)
Transmission physics	multi-mode fiberglass
Transmission length	12.1 km (fiberglass with F-G 62.5/125 0.7 dB/km F1000) 3.3 km (fiberglass with F-G 62.5/125 2.6 dB/km F600) 7.1 km (fiberglass with F-G 50/125 0.7 dB/km F1200) 3.1 km (fiberglass with F-G 50/125 1.6 dB/km F800)
Wavelength	1300 nm
No. of channels	2 (SC multi-mode)

Product properties

Product type	Switch
Product family	Unmanaged Switch SFNT
Type	Block design
MTTF	43.9 Years (MIL-HDBK-217F standard, temperature 25°C, operating cycle 100%)

FL SWITCH SFNT 6TX/2FX - Industrial Ethernet Switch



2891025

<https://www.phoenixcontact.com/us/products/2891025>

Switch functions

Basic functions	Unmanaged switch / autonegotiation, complies with IEEE 802.3, store and forward switching mode, includes QoS and alarm contact
Status and diagnostic indicators	LEDs: U _{S1} , U _{S2} (redundant voltage supply), link and activity per port
Additional functions	Autonegotiation

Security functions

Basic functions	Unmanaged switch / autonegotiation, complies with IEEE 802.3, store and forward switching mode, includes QoS and alarm contact
-----------------	--

Electrical properties

Local diagnostics	US1/2 Supply voltage Green LED
	LNK/ACT Link status/data transmission Green LED
	100 Data transmission speed Yellow LED
Maximum power dissipation for nominal condition	6 W
Transmission medium	Copper
	FO

Supply

Supply voltage (DC)	24 V DC (redundant)
Supply voltage range	9 V DC ... 32 V DC
Power supply connection	Via COMBICON, max. conductor cross section 2.5 mm ²
Residual ripple	3.6 V _{PP} (within the permitted voltage range)
Typical current consumption	250 mA (at U _S = 24 V DC)

Connection data

Conductor cross section, rigid	0.2 mm ² ... 2.5 mm ²
Conductor cross section, flexible	2 mm ² ... 2.5 mm ²
Conductor cross section AWG	24 ... 14
Stripping length	7 mm

Environmental and real-life conditions

Ambient conditions

Degree of protection	IP20
Ambient temperature (operation)	-40 °C ... 75 °C
Ambient temperature (storage/transport)	-40 °C ... 85 °C
Permissible humidity (operation)	5 % ... 95 % (non-condensing)
Permissible humidity (storage/transport)	5 % ... 95 % (non-condensing)
Air pressure (operation)	62 kPa ... 108 kPa (up to 4160 m above mean sea level)
Air pressure (storage/transport)	62 kPa ... 108 kPa (up to 4160 m above mean sea level)

Approvals

FL SWITCH SFNT 6TX/2FX - Industrial Ethernet Switch



2891025

<https://www.phoenixcontact.com/us/products/2891025>

Conformity/Approvals

Conformance	CE-compliant
ATEX	Ⓜ II 3 G Ex nA nC IIC T4 Gc
EU-type examination certificate	DEMKO 16 ATEX 1617X
IECEX	Ex nA nC IIC T4 Gc
IECEX certificate	IECEX UL 16.0093X
UL, USA / Canada	Class I, Div. 2, Groups A, B, C, D

EMC data

Noise immunity	EN 61000-6-2
Electromagnetic compatibility	Conformance with EMC Directive 2004/108/EC
Noise emission	EN 61000-6-4

System properties

Functionality

Basic functions	Unmanaged switch / autonegotiation, complies with IEEE 802.3, store and forward switching mode, includes QoS and alarm contact
-----------------	--

Signaling

Status display	LEDs: U _{S1} , U _{S2} (redundant voltage supply), link and activity per port
----------------	--

FL SWITCH SFNT 6TX/2FX - Industrial Ethernet Switch



2891025

<https://www.phoenixcontact.com/us/products/2891025>

Approvals

To download certificates, visit the product detail page: <https://www.phoenixcontact.com/us/products/2891025>



EAC

Approval ID: RU *-DE.A*08.B.00739



EAC

Approval ID: RU*-DE.*.B.00741/19



UL Listed

Approval ID: FILE E 140324



cUL Listed

Approval ID: FILE E 140324



KC

Approval ID: MSIP-REI-PCK-2891025



IECEX

Approval ID: IECEX UL 16.0093X



cUL Listed

Approval ID: FILE E 199827



UL Listed

Approval ID: FILE E 199827



ATEX

Approval ID: DEMKO 16 ATEX 1617X

cULus Listed

cULus Listed

FL SWITCH SFNT 6TX/2FX - Industrial Ethernet Switch



2891025

<https://www.phoenixcontact.com/us/products/2891025>

Classifications

ECLASS

ECLASS-12.0	19170402
ECLASS-11.0	19170402

ETIM

ETIM 8.0	EC000734
----------	----------

UNSPSC

UNSPSC 21.0	43222600
-------------	----------

FL SWITCH SFNT 6TX/2FX - Industrial Ethernet Switch



2891025

<https://www.phoenixcontact.com/us/products/2891025>

Environmental product compliance

EU RoHS

Fulfills EU RoHS substance requirements	Yes
Exemption	6(c), 7(a), 7(c)-I

China RoHS

Environment friendly use period (EFUP)	EFUP-10
	An article-related China RoHS declaration table can be found in the download area for the respective article under "Manufacturer declaration". For all articles with EFUP-E, no China RoHS declaration table issued and required.

EU REACH SVHC

REACH candidate substance (CAS No.)	Lead(CAS: 7439-92-1)
SCIP	283d8abd-2100-4226-bfed-08a3c5adb638

FL SWITCH SFNT 6TX/2FX - Industrial Ethernet Switch



2891025

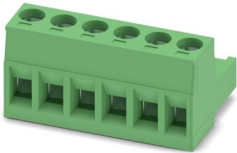
<https://www.phoenixcontact.com/us/products/2891025>

Accessories

MSTB 2,5/ 6-ST - PCB connector

1754520

<https://www.phoenixcontact.com/us/products/1754520>



PCB connector, nominal cross section: 2.5 mm², color: green, nominal current: 12 A, rated voltage (III/2): 320 V, contact surface: Tin, contact connection type: Socket, number of potentials: 6, number of rows: 1, number of positions: 6, number of connections: 6, product range: MSTB 2,5/...-ST, pitch: 5 mm, connection method: Screw connection with tension sleeve, screw head form: L Slotted, conductor/PCB connection direction: 0 °, locking clip: - Locking clip, plug-in system: COMBICON MSTB 2,5, locking: without, mounting: without, type of packaging: packed in cardboard

DT-LAN-CAT.6+ - Surge protection device

2881007

<https://www.phoenixcontact.com/us/products/2881007>



Surge protection in accordance with Class E_A (CAT6_A), for Gigabit Ethernet (up to 10 Gbps), token ring, FDDI/CDDI, ISDN, and DS1. Suitable for Power over Ethernet (PoE++ / 4PPoE) "Mode A" and "Mode B". RJ45 attachment plug with separate grounding cable and ground connection snap-on foot for NS 35 DIN rails.

FL SWITCH SFNT 6TX/2FX - Industrial Ethernet Switch



2891025

<https://www.phoenixcontact.com/us/products/2891025>

FL SEC PAC 4TX - Port Guard Security Element

2832865

<https://www.phoenixcontact.com/us/products/2832865>

Layer1 security elements for 4 RJ45 network connections for use with patch boxes and panels



FL DIN RA - DIN rail adapter

2891053

<https://www.phoenixcontact.com/us/products/2891053>

The FL DIN RA is installed in a standard, 19-inch rack (EIA-310-D, IEC 60297-3-100) to allow DIN rail mounted equipment to be rack mounted.



FL SWITCH SFNT 6TX/2FX - Industrial Ethernet Switch



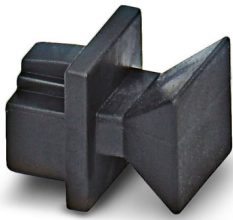
2891025

<https://www.phoenixcontact.com/us/products/2891025>

FL RJ45 PROTECT CAP - Dust protection

2832991

<https://www.phoenixcontact.com/us/products/2832991>

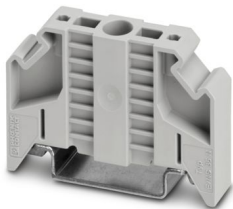


Dust protection caps for RJ45 socket

E/NS 35 N - End bracket

0800886

<https://www.phoenixcontact.com/us/products/0800886>



End clamp, width: 9.5 mm, color: gray

FL SWITCH SFNT 6TX/2FX - Industrial Ethernet Switch



2891025

<https://www.phoenixcontact.com/us/products/2891025>

FL PA SFNT 5-8 - Mounting panel

2891012

<https://www.phoenixcontact.com/us/products/2891012>

Mounting plate for SFNT switches



FL CAT5 PATCH 0,5 - Patch cable

2832263

<https://www.phoenixcontact.com/us/products/2832263>

Patch cable, CAT5, assembled, 0.5 m



FL SWITCH SFNT 6TX/2FX - Industrial Ethernet Switch



2891025

<https://www.phoenixcontact.com/us/products/2891025>

FL CAT5 PATCH 1,0 - Patch cable

2832276

<https://www.phoenixcontact.com/us/products/2832276>

Patch cable, CAT5, assembled, 1 m



FL CAT5 PATCH 2,0 - Patch cable

2832289

<https://www.phoenixcontact.com/us/products/2832289>

Patch cable, CAT5, assembled, 2 m



FL SWITCH SFNT 6TX/2FX - Industrial Ethernet Switch



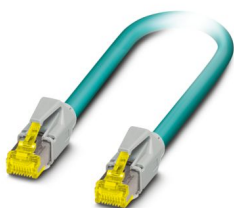
2891025

<https://www.phoenixcontact.com/us/products/2891025>

NBC-R4AC-R4AC-IE8A/.../... - Patch cable

1411854

<https://www.phoenixcontact.com/us/products/1411854>

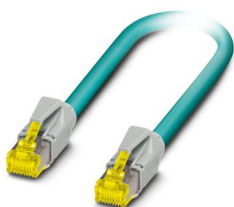


Patch cable, degree of protection: IP20, number of positions: 8, 10 Gbps, CAT6_A, cable outlet: straight, Ethernet

NBC-R4AC/10G-R4AC/10G-94F/2,0 - Patch cable

1408360

<https://www.phoenixcontact.com/us/products/1408360>



Patch cable, CAT6_A, 4-pair, shielded, connection not crossed (line), assembled at both ends with RJ45/IP20 connectors, outer sheath material: PUR, length: 2.0 m

FL SWITCH SFNT 6TX/2FX - Industrial Ethernet Switch



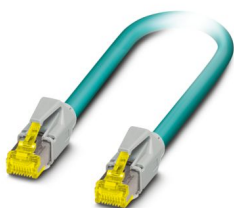
2891025

<https://www.phoenixcontact.com/us/products/2891025>

NBC-R4AC/10G-R4AC/10G-94F/3,0 - Patch cable

1408365

<https://www.phoenixcontact.com/us/products/1408365>



Patch cable, CAT6_A, 4-pair, shielded, connection not crossed (line), assembled at both ends with RJ45/IP20 connectors, outer sheath material: PUR, length: 3.0 m

NBC-R4AC/1,0-93B/R4AC - Patch cable

1408968

<https://www.phoenixcontact.com/us/products/1408968>



Patch cable, degree of protection: IP20, cable length: 1 m, number of positions: 4, 100 Mbps, CAT5, material: PA 6.6, PROFINET

FL SWITCH SFNT 6TX/2FX - Industrial Ethernet Switch



2891025

<https://www.phoenixcontact.com/us/products/2891025>

NBC-R4AC/2,0-93B/R4AC - Patch cable

1408969

<https://www.phoenixcontact.com/us/products/1408969>



Patch cable, degree of protection: IP20, cable length: 2 m, number of positions: 4, 100 Mbps, CAT5, material: PA 6.6, PROFINET

NBC-R4AC/5,0-93B/R4AC - Patch cable

1408970

<https://www.phoenixcontact.com/us/products/1408970>



Patch cable, degree of protection: IP20, cable length: 5 m, number of positions: 4, 100 Mbps, CAT5, material: PA 6.6, PROFINET

FL SWITCH SFNT 6TX/2FX - Industrial Ethernet Switch



2891025

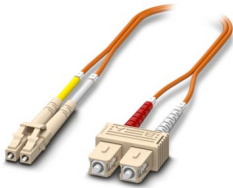
<https://www.phoenixcontact.com/us/products/2891025>

FOC-LC:PA-SC:PA-OM2:D01/1 - FO patch cable

1115607

<https://www.phoenixcontact.com/us/products/1115607>

Multi-mode OM2 duplex jumper, LC-SC, UPC polishing, length 1 m

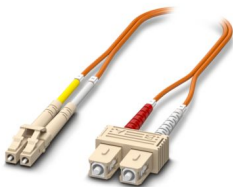


FOC-LC:PA-SC:PA-OM2:D01/2 - FO patch cable

1115605

<https://www.phoenixcontact.com/us/products/1115605>

Multi-mode OM2 duplex jumper, LC-SC, UPC polishing, length 2 m



FL SWITCH SFNT 6TX/2FX - Industrial Ethernet Switch



2891025

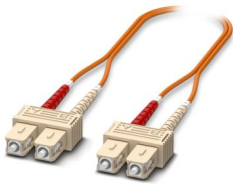
<https://www.phoenixcontact.com/us/products/2891025>

FOC-SC:PA-SC:PA-OM2:D01/1 - FO patch cable

1115536

<https://www.phoenixcontact.com/us/products/1115536>

Multi-mode OM2 duplex jumper, SC-SC, UPC polishing, length 1 m

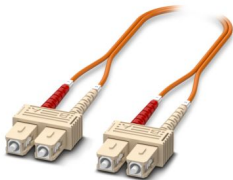


FOC-SC:PA-SC:PA-OM2:D01/2 - FO patch cable

1115535

<https://www.phoenixcontact.com/us/products/1115535>

Multi-mode OM2 duplex jumper, SC-SC, UPC polishing, length 2 m



FL SWITCH SFNT 6TX/2FX - Industrial Ethernet Switch



2891025

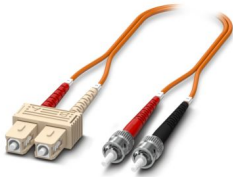
<https://www.phoenixcontact.com/us/products/2891025>

FOC-ST:PA-SC:PA-OM2:D01/1 - FO patch cable

1115574

<https://www.phoenixcontact.com/us/products/1115574>

Multi-mode OM2 duplex jumper, ST-SC, UPC polishing, length 1 m

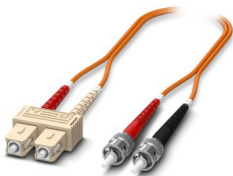


FOC-ST:PA-SC:PA-OM2:D01/2 - FO patch cable

1115573

<https://www.phoenixcontact.com/us/products/1115573>

Multi-mode OM2 duplex jumper, ST-SC, UPC polishing, length 2 m



FL SWITCH SFNT 6TX/2FX - Industrial Ethernet Switch



2891025

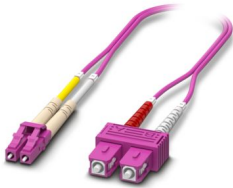
<https://www.phoenixcontact.com/us/products/2891025>

FOC-LC:PA-SC:PA-OM4:D01/1 - FO patch cable

1115601

<https://www.phoenixcontact.com/us/products/1115601>

Multi-mode OM4 duplex jumper, LC-SC, UPC polishing, length 1 m

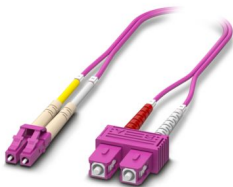


FOC-LC:PA-SC:PA-OM4:D01/2 - FO patch cable

1115600

<https://www.phoenixcontact.com/us/products/1115600>

Multi-mode OM4 duplex jumper, LC-SC, UPC polishing, length 2 m



FL SWITCH SFNT 6TX/2FX - Industrial Ethernet Switch



2891025

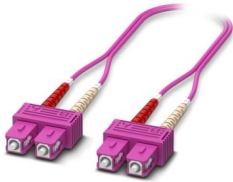
<https://www.phoenixcontact.com/us/products/2891025>

FOC-SC:PA-SC:PA-OM4:D01/1 - FO patch cable

1115424

<https://www.phoenixcontact.com/us/products/1115424>

Multi-mode OM4 duplex jumper, SC-SC, UPC polishing, length 1 m

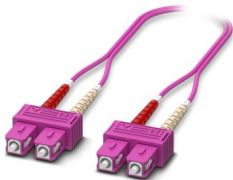


FOC-SC:PA-SC:PA-OM4:D01/2 - FO patch cable

1115423

<https://www.phoenixcontact.com/us/products/1115423>

Multi-mode OM4 duplex jumper, SC-SC, UPC polishing, length 2 m



Phoenix Contact 2024 © - all rights reserved
<https://www.phoenixcontact.com>

Phoenix Contact USA
586 Fulling Mill Road
Middletown, PA 17057, United States
(+717) 944-1300
info@phoenixcon.com