



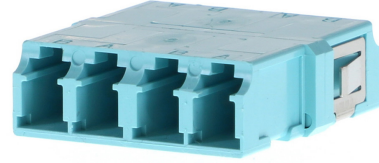
Part Number : [1061233300](#)

Product Description : LC/UPC Adapter, Quad, Multimode, Aqua Body, Ceramic Alignment Sleeve, Small Flange, Snap Mount, Metal Mounting Plate, SC Duplex Footprint

Series Number : 106123

Status : Active

Product Category : Fiber Optic Adapters



Documents & Resources

Drawings

[Drawing 1061233300_sd.pdf](#)

Product Environment Compliance

Compliance

GADSL/IMDS	Not Relevant
China RoHS	Not Reviewed per SJ/T 11365-2006
EU ELV	Not Relevant
Low-Halogen Status	Not Low-Halogen per IEC 61249-2-21
REACH SVHC	Contains Decabromodiphenylether per D(2024)4144-DC (27 June 2024)
EU RoHS	Compliant per EU 2015/863

Multiple Part Product Compliance Statements

- Eu RoHS
- REACH SVHC
- Low-Halogen

Multiple Part Industry Compliance Documents

- IPC 1752A Class C
- IPC 1752A Class D
- Molex Product Compliance Declaration
- IEC-62474
- chemSHERPA (xml)

EU RoHS Certificate of Compliance

Part Details

General

Status	Active
Category	Fiber Optic Adapters
Series	106123
Description	LC/UPC Adapter, Quad, Multimode, Aqua Body, Ceramic Alignment Sleeve, Small Flange, Snap Mount, Metal Mounting Plate, SC Duplex Footprint
Component Type	Standard
Product Family	Optical EMI Shielding Adapters
Product Name	LC
Type	Adapter
UPC	822350277914

Electrical

Shield Type	N/A
Shielded	No

Physical

Alignment Sleeve	Ceramic
Angled Physical Contact (APC)	No
Color - Resin	Aqua
Gender	Female-Female
Material - Housing	Polyetherimide
Mounting Style	Snap
Net Weight	10.778/g
Orientation	Straight
Panel Mount	Small Flange
Ports	4
Shutter	No

Solder Process Data

Lead-Free Process Capability	N/A
------------------------------	-----

This document was generated on Sep 23, 2024