

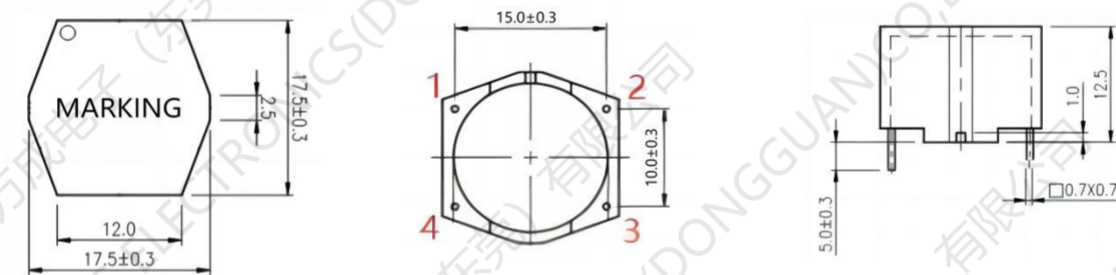
Common Mode Power line Choke FC-SLF1813-Series

Features:

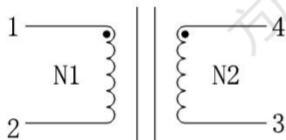
1. turns Ratio: 1:1
2. Easy assembling due to 4 pin housing
3. Toroidal core choke with sector winding
4. High interference suppression for common mode
5. interferences in low and middle frequency ranges Low stray field
6. Compact and small size 4 soldering pins for perfect mechanical decoupling
7. Ambient temperature: - 40 °C to +85 °C
8. Operating temperature: - 40 °C to +125 °C



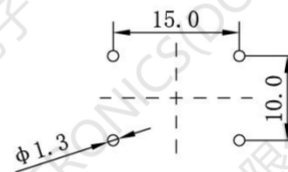
1. Dimensions:mm



2. Schematic:



3. Recommended Land Pattern: mm



4. Electrical Properties

Part Number	Inductance	HI-POT		DCR (mΩ MAX)	Current Rating (A)	Rated Voltage(AC)
		COIL~COIL	COIL~CORE			
FC-SLF1813-251-6A-LF	250uH	2250V/AC	500V/DC	20.0	6A/min;8A/typ	85-285V
FC-SLF1813-2.0mH-6A-LF	2.0mH	2250V/DC	500V/DC	10.0	6A/min;8A/typ	
FC-SLF1813-5.0mH-3.5A-LF	5.0mH	2250V/DC	500V/DC	120.0	3.5A	
FC-SLF1813-10mH-2.5A-LF	10.0mH	2250V/DC	500V/DC	180.0	2.5A	

Inductance Test Freq: FC-SLF1813-251-6A-LF: 10.0KHz /0.1V

FC-SLF1813-2.0mH-6A-LF: 10KHz /0.1V

FC-SLF1813-5.0mH-3.5A-LF: 1KHz /0.1V

FC-SLF1813-10mH-2.5A-LF: 1KHz /0.1V

Current Rating base on Temp. rise 40°C max.