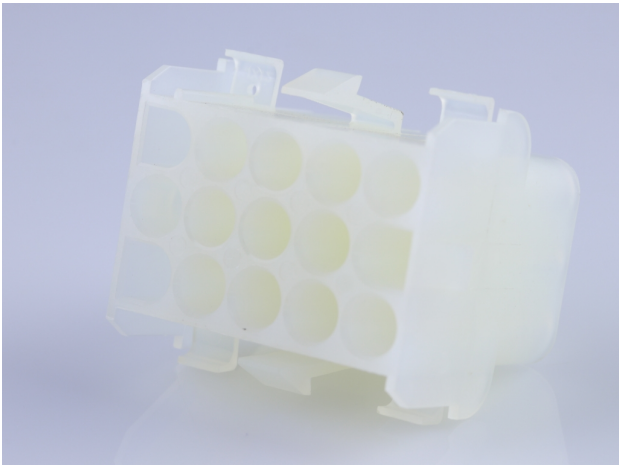




Part Number : [50842152](#)
Product Description : 2.13mm Diameter MLX
Pin and Socket Receptacle, 15 Circuits,
Natural
Series Number : 42022
Status : Active
Product Category : Connector Housings
Engineering Number : 42022-15C



Documents & Resources

Drawings

[050842152_sd.pdf](#)
[PK-42022-XX-001.pdf](#)

3D Models and Design Files


[050842152_stp.zip](#)

Specifications

[PS-42022-0001-001.pdf](#)
[TS-42022-0001-001.pdf](#)

Product Environment Compliance

Compliance

GADSL/IMDS	Not Relevant
China RoHS	
EU ELV	Not Relevant
Low-Halogen Status	Low-Halogen per IEC 61249-2-21
REACH SVHC	Contains Melamine per D(2024)4144-DC (27 June 2024)
EU RoHS	Compliant per EU 2015/863

Multiple Part Product Compliance Statements

- Eu RoHS
- REACH SVHC

- Low-Halogen

Multiple Part Industry Compliance Documents

- IPC 1752A Class C
- IPC 1752A Class D
- Molex Product Compliance Declaration
- IEC-62474
- chemSHERPA (xml)

EU RoHS Certificate of Compliance

Part Details

General

Status	Active
Category	Connector Housings
Series	42022
Description	2.13mm Diameter MLX Pin and Socket Receptacle, 15 Circuits, Natural
Application	Power, Wire-to-Wire
Comments	Glow Wire Equivalent Part Number 366440008; Maximum current per contact 20A if used with 36663 and 36664 terminal
Product Name	MLX
UPC	800754387071

Agency

CSA	LR19980
UL	E29179

Physical

Circuits Detail	15
Circuits (maximum)	15
Color - Resin	Natural
Flammability	94V-0
Gender	Receptacle
Glow-Wire Capable	No
Keying to Mating Part	None

Lock to Mating Part	Yes
Material - Resin	Nylon
Net Weight	10.969/g
Number of Rows	3
Packaging Type	Carton
Panel Mount	Yes
Pitch - Mating Interface	6.35mm
Polarized to Mating Part	Yes
Stackable	No
Temperature Range - Operating	-55° to +105°C

Mates With / Use With

Mates with Part(s)

Description	Part Number
2.13mm Diameter MLX Power Crimp Housing Plugs	<u>42021</u>

Use with Part(s)

Description	Part Number
Pre-Crimped Lead MLX Male-to-MLX Male, Tin (Sn) Plating, 150.00mm Length, 18 AWG, Black	<u>797582029</u>
Pre-Crimped Lead MLX Male-to-MLX Male, Tin (Sn) Plating, 300.00mm Length, 18 AWG, Black	<u>797582030</u>
Pre-Crimped Lead MLX Female-to-MLX Female, Tin (Sn) Plating, 150.00mm Length, 18 AWG, Black	<u>797582031</u>
Pre-Crimped Lead MLX Female-to-MLX Female, Tin (Sn) Plating, 300.00mm Length, 18 AWG, Black	<u>797582032</u>
MLX Male Crimp Terminals	<u>42023</u>
MLX Female Crimp Terminals	<u>42024</u>