

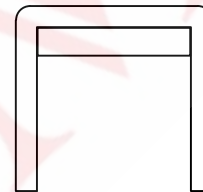
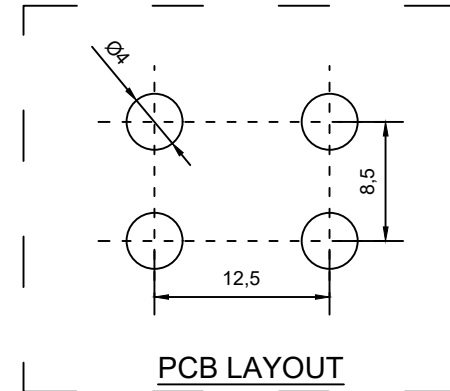
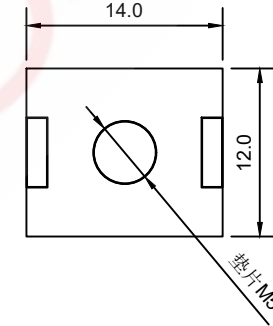
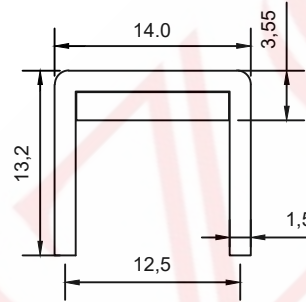
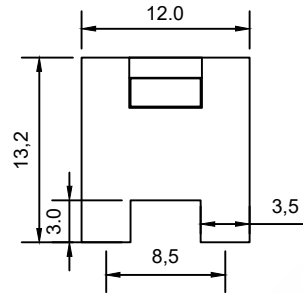
SAMZO REAC/ROHS

REV	ECN NO	DESCRIPTION	DESIGN	APPROVAL	DATE
A1	NEW	Replace frame			2018.06.12

技术要求:

Technical requirements:

- 打铜底0.5-1UM, 镍底2-2.5UM, 哑锡3-5UM。
Copper base 0.5 - 1 UM, nickel base 2 - 2.5 UM, matte tin 3 - 5 UM.
- 不得有脚变形, 毛刺等缺陷。
There shall be no defects such as pin deformation and burrs.
- 插脚尖部符合可焊性要求。
The tip of the insertion pin shall meet the solderability requirements.
- 螺纹需符合通止规要求。
The thread shall meet the requirements of the go and no-go gauge.
- 材质: 黄铜H65。
Material: Brass H65.
- 过载电流: 75A
Overload current: 75A
- 螺孔为垫片 M5
The screw holes M5
- 未标注尺寸公差值按GB/T1184-1996H级
Unmarked dimensional tolerance values are in accordance with Grade H of GB/T1184-1996



垫片M5

PCB LAYOUT

1214 102 30 0 M5

SERISE:
12*14mm

FOOT HIGH:
H3.0mm

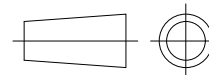
SCREW HOLE:
M5

HIGH:
H10.2mm

CUSTOM CODE:
ROUTINE

ITEM	DESCRIPTION	MATERIAL	QTY	FINSH/COLOR					
A	Subject	H62(Y2)	1	tin plating					
					GENERAL TOLERANCE				
						≥0~2<	±0.15		
					DESIGN	WANGUIFA	2018.06.12	≥2~5<	±0.25
					CHECKED	ZHENGUILAN	2018.06.12	≥0~2<	±0.15
F					APPROVED	LILIANJIANG	2018.06.14	≥5	±0.35

FIRST VIEW



The copyright belongs to samzo parts [China] Co., Ltd. please use the material after samzo parts agree to authorize. The final right of interpretation belongs to samzo parts.
WWW.KKK-JP.COM

TITLE::

12*14-H10.2+3.0mm (垫片M5)

DWG NO: 1214-P010

PART NO: 1214-20230715

MODEL NO: 1214102300M5

NAME:

PCB soldering terminal

SAMZO COMPONENTS
Electronic switch and connector manufacturer

SCALE 1:1 UNIT mm