

DC Frame Solenoid



Model 26

Features:

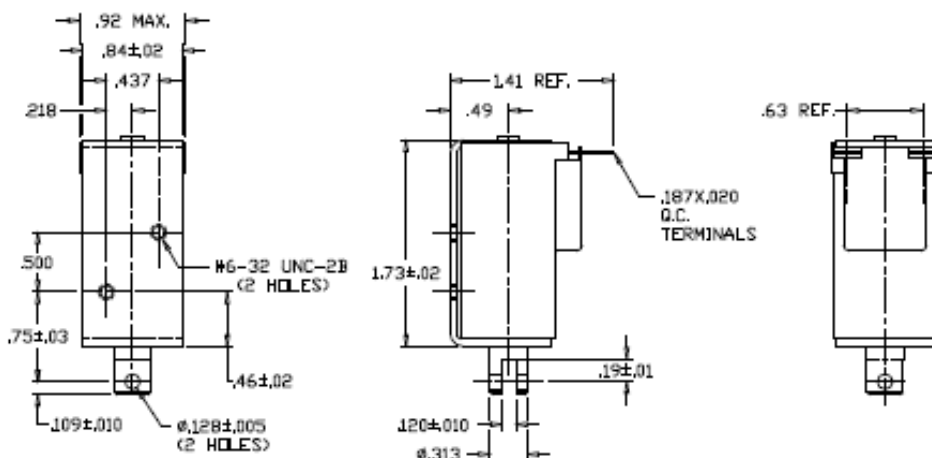
- AC & DC Applications
- See Model 26 AC
- UL recognized

Electrical:

- Coil Voltages: 6, 12, 24, 48, 110VDC standard
- Coil Termination: 3/16" QC terminals
- Duty Cycle: 100% Continuous, 25% Intermittent, 10% Intermittent, 1% Pulse
- Coil treatment: Plastic cover
- Insulation Class: Class A Rating - 105° C (221° F)
- Dielectric Strength: 1500V 60 Hz

Mechanical:

- Size: 1.54" (L) x 1.62" (W) x 1.57" (H)
 - Plunger Diameter: 0.187"
 - Plunger Guide Material: Plastic
 - Mounting: 2 - #6-32 holes
 - Weight: Plunger .5 oz, Total 3.5 oz
 - Life Expectancy: 1 Million Cycles¹
- ¹ - Dependent on load conditions



Solenoid shown energized with plunger fully seated

Standard Part Numbers

Model No.	Part No.	Duty Cycle	Voltage	Resistance ² (Ω)	Power (W)	Current
26-C-12D	A420-065542-00	Cont.	12VDC	26.7	5.7	449 mA
26-I-12D	A420-065543-00	Inter. 25%	12VDC	10.7	14.1	1.1 A
26-C-24D	A420-065544-00	Cont.	24VDC	104	5.8	231 mA
26-I-24D	A420-065545-00	Inter. 25%	24VDC	41.5	14.6	578 mA

² - Coil resistance tolerance +/- 5%

Contact us for custom voltages or duty cycles

Available Customization:

- Plunger
- DC Voltage
- Duty Cycle
- Insulation systems up to class H 180° C (356° F)

*** Minimum quantities apply**

Stroke (in.)	Typical Push Force Ounces [N] @ 20°C (68°F) (Distance from fully seated position)									HOLDING FORCE Ounces [N]	Power (W)
	0.050	0.125	0.250	0.375	0.500	0.625	0.750	1.000			
Continuous 100%	25 [7]	12 [3.3]	5 [1.4]	3 [0.8]	2 [0.6]	1 [0.3]	N/A	N/A	58 [16.1]	5.8	
Intermittent 25%	30 [8.3]	24 [6.7]	16 [4.4]	13 [3.6]	12 [3.3]	6 [1.7]	3 [0.8]	2 [0.6]	75 [20.9]	14.5	
Intermittent 10% ³	50 [13.9]	40 [11.1]	28 [7.8]	22 [6.1]	20 [5.6]	17 [4.7]	15 [4.2]	5 [1.4]	80 [22.2]	72.2	
Pulse 1% ³	85 [23.6]	75 [20.9]	55 [15.3]	48 [13.3]	38 [10.6]	30 [8.3]	22 [6.1]	8 [2.2]	N/A	146.8	

Continuous Duty 100% = 100% On Time
 Intermittent Duty 25% = 25% On Time (100 Seconds On Max Followed By 300 Seconds Off)
 Intermittent Duty 10% = 90% On Time (10 Seconds On Max Followed By 90 Seconds Off)
 Pulse Duty 1% = 99% On Time (1 Second On Max Followed By 99 Seconds Off)

³ - Calculated force values to be verified in application



GUARDIAN-ELECTRIC.COM

1425 Lake Ave - Woodstock IL 60098 - Phone: 800-762-0369
 The information is subject to change without notice. © Guardian Electric

