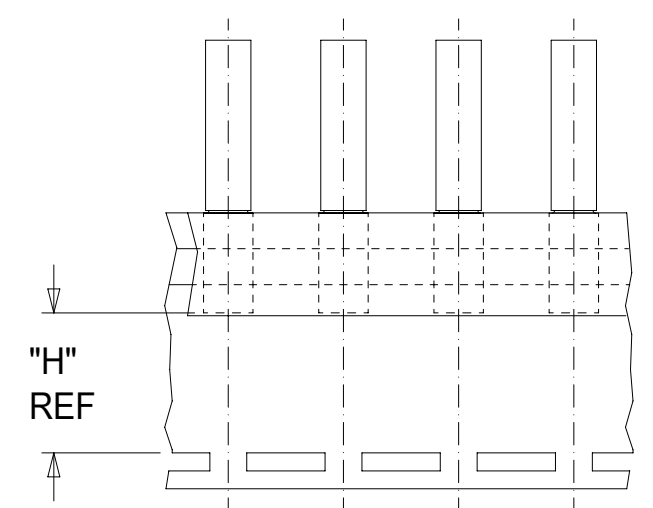
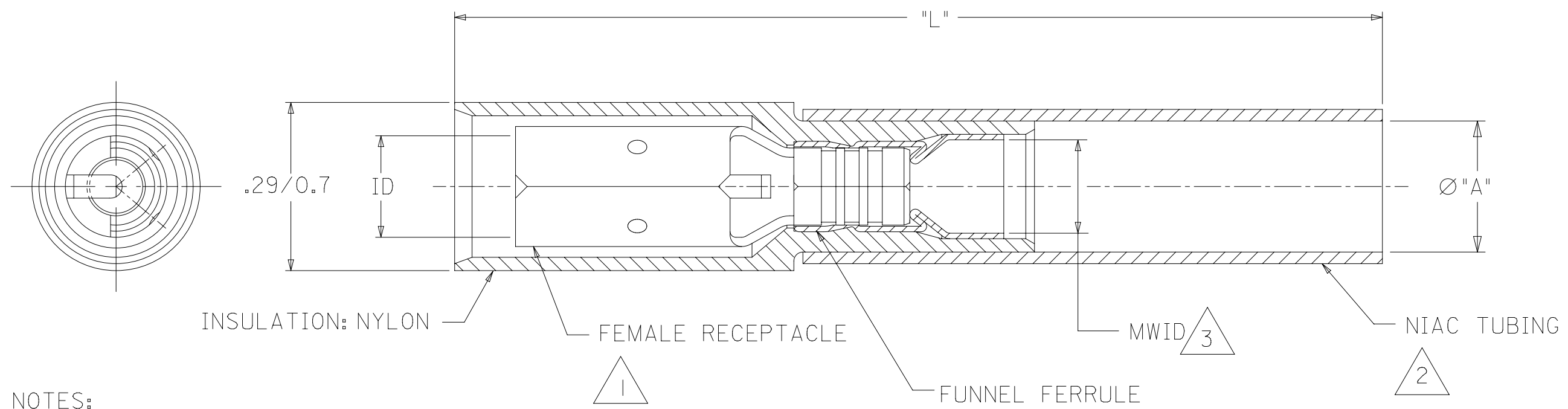


MAT'L NO	ENG NO	MAT'L NO (ON TAPE)	ENG NO (ON TAPE)	AWG	COLOR	MWID	"ID" MIN	"L" MAX	"A" MIN	"H" REF
191640052	SBRA-8156N	191641151	SBRA-8156NT	22-18	RED	.13 (3.3)	.156 (3.96)	1.63 (41.4)	.230 (5.84)	.42 (10.7)
191640053	SBRA-8180N	191641152	SBRA-8180NT				.180 (4.57)			
191640054	SBRB-8156N	191640414	SBRB-8156NT	16-14	BLUE	.15 (3.8)	.156 (3.96)			
191640055	SBRB-8180N	191641147	SBRB-8180NT				.180 (4.57)			

(D4) (D4)



PARTS ON TAPE



NOTES:

- 1 TERMINAL
MATERIAL: COPPER
PLATING: TIN
- 2 INSULATION
MATERIAL: HEAT SHRINKABLE
NIAC TUBING W/ HOT-MELT
ADHESIVE INNER LINER
- 3 MWID= MAXIMUM WIRE INSULATION DIAMETER

4. PARTS ARE ROHS COMPLIANT.

THIS DRAWING CONTAINS INFORMATION THAT IS PROPRIETARY TO MOLEX ELECTRONIC TECHNOLOGIES, LLC AND SHOULD NOT BE USED WITHOUT WRITTEN PERMISSION												
DIMENSION UNITS		SCALE		CURRENT REV DESC: "L" WAS 1.62/41.2 FOR 191640052, "A" WAS .235/5.97 FOR 191640052 AND 191640053						molex		
INCH/MM		NTS										
GENERAL TOLERANCES (UNLESS SPECIFIED)												
	MM	INCH										
4 PLACES	±											
3 PLACES	±											
2 PLACES	±	0.25 ± 0.01										
1 PLACE	±	0.5 ± 0.02										
0 PLACES	±											
ANGULAR TOL			± 0.5°									
DRAFT WHERE APPLICABLE MUST REMAIN WITHIN DIMENSIONS			THIRD ANGLE PROJECTION		DRAWING		SERIES		MATERIAL NUMBER		CUSTOMER	
			B-SIZE		19164		SD-19164-035		GENERAL MARKET		1 OF 1	