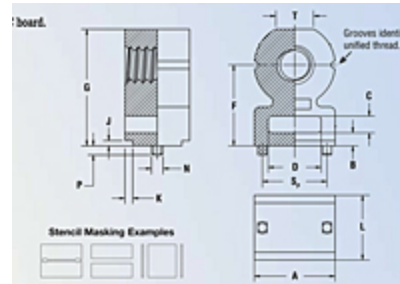




PennEngineering
Corporate Headquarters – Danboro, PA
 5190 Old Easton Rd.
 Danboro, PA 18916
Phone: 215-766-8853
Toll-Free Phone: 1-800-237-4736 (U.S. only)
Email: info@pemnet.com
Website: www.pemnet.com

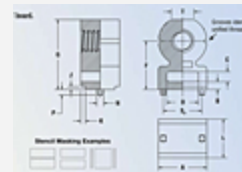
Part # SMTRAM3-7-5ET, Surface Mount R'Angle® Fastener - Metric Type SMTRA

Type SMTRA ReelFast® R'ANGLE® surface mount fasteners provide strong re-usable threads at right angles to PC boards.



Specifications

Thread Size x Pitch	M3 x 0.5 5 mm
L - Length ± 0.13	
Min. Sheet Thickness	1.0 mm
Hole Size in Sheet + 0.08	1.35 mm
A ± 0.15	6.35 mm
B ± 0.15	1.25 mm
C ± 0.15	1.65 mm
D ± 0.15	4.00 mm
F - Height ± 0.15	7 mm
G ± 0.15	9.75 mm
J Nom.	0.50 mm
K Nom.	0.75 mm
N Max.	1.22 mm



P Max.	1.00 mm
P_A - Pad Width Min.	7.47 mm
P_L - Pad Length Min.	4.57 mm
S_p ±0.08	4.75 mm
S_H - Hole Spacing ±0.05	4.75 mm
T Nom.	3.20 mm
Parts per Reel	300
Pitch	16 mm
Tape Width	24 mm
For Use in Sheet Hardness¹	NOT APPLICABLE
Thread Specification	Internal, ANSI/ASME B1.13M, 6H
Fastener Material	Zinc Diecast
Standard Finish	Electro-Plated Preservative Tin, ASTM B545, Coating, Class A with Annealed Clear
CAD Supplier	PennEngineering® (PEM®)

¹ HRB - Hardness Rockwell "B" Scale. HB - Hardness Brinell.