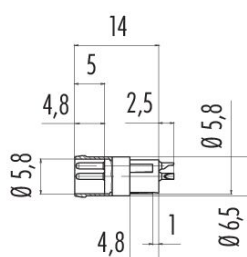


Product description **Snap-In Male receptacle, Contacts: 3, unshielded, solder, IP65**
Area **series 718**
Part no. **09 3411 40 03**

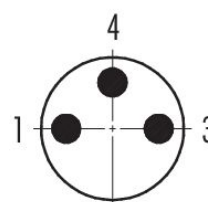
Illustration



Scale drawing



Contact arrangement (Plug-in side)



You can find the assembly instructions on the next page.

Technical data

General features

Part no.	09 3411 40 03
Connector design	Male receptacle
Type standard	DIN EN 61076-2-104
Version	Connector pin straight
Connector locking system	snap-in
Termination	solder
Degree of protection	IP65
Cross-sectional area	0.25 mm ² / AWG 24
Temperature range from/to	-25 °C / 70 °C
Mechanical operation	> 100 Mating cycles
Weight (g)	0.90
Customs tariff number	85369010
Country of Origin	DE

Electrical parameters

Rated voltage	10 - 30 V
Rated impulse voltage	500 V
Rated current	4.0 A
Pollution degree	3
Overvoltage category	II
Insulating material group	II
EMC compliance	unshielded

Product data sheet

Automation technology - Sensors and actuators



Product description **Snap-In Male receptacle, Contacts: 3, unshielded, solder, IP65**

Area **series 718**
Part no. **09 3411 40 03**

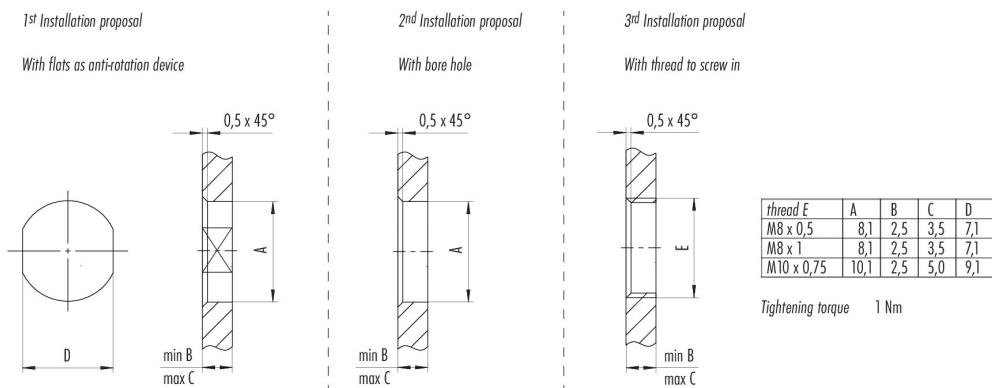
Material

Housing material	CuZn (Brass nickel plated)
Contact body material	PA
Contact material	CuZn (brass)
Contact plating	Au (gold)
REACH SVHC	CAS 7439-92-1 (Lead)
SCIP number	d693f1f2-0579-4aa6-b934-e128b53ab8bf

Classifications

eCl@ss 11.1	27-44-01-09
ETIM 9.0	EC003569

Assembly instructions / Panel cut-out



Product description	Snap-In Male receptacle, Contacts: 3, unshielded, solder, IP65
Area	series 718
Part no.	09 3411 40 03

Security notices

The connector must not be plugged or unplugged under load. Non-observance and improper use can result in personal injury.

The connectors have been developed for applications in plant engineering, control and electrical equipment construction. The user is responsible for checking whether the connectors can also be used in other areas of application.

Connectors which are used in circuits with voltages dangerous to the touch may only be installed and used by, or under the supervision of, persons with electrical engineering training, taking into account the applicable regulations and standards.

The user must take suitable safety precautions to ensure that the connector cannot be accidentally disconnected.

Plug connectors with enclosure protection IP67 and IP68 are not suitable for use under water. When used outdoors, the plug connectors must be protected separately against corrosion. For further information on the IP protection classes, please refer to the "Technical Information" download centre.

The plug connector is not suitable for mains voltages. Please observe the pollution degree and the overvoltage category. For further information, please refer to the download center "Technical Information".

To lock the cable connector with the device connector, the threaded ring is tightened "hand-tight" (approx. 50 cNm).