

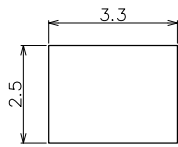


CHIP COMMON MODE CHOKE

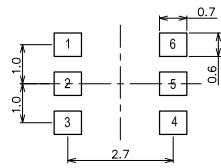
High Common Mode Impedance at High Frequency.
 Excellent Noise Suppression Performance.
 Small Size and Low Profile, Surface Mount Type.
 Operating Temperature Range: -40 °C to +85°C.
 RoHS Compliant.

Part Number	Electrical Specifications @25°C					
	Impedance @100KHz (Ω) ±25%	Rated Current (mA Max)	DCR (Ω Max)	Rated Voltage (V)	Withstand Volt 1mA 1S (Vdc max)	IR M(Ω Min)
CM3225T-801	800	500	0.50	50	125	10

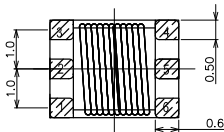
MECHANICAL



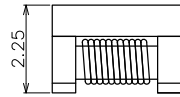
TOP VIEW



SUGGEST LAYOUT

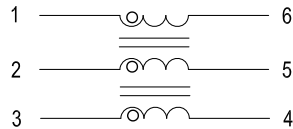


BOTTOM VIEW

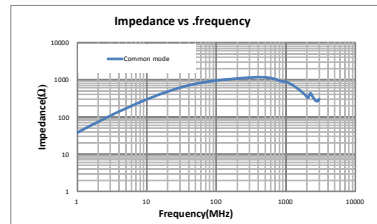


SIDE VIEW

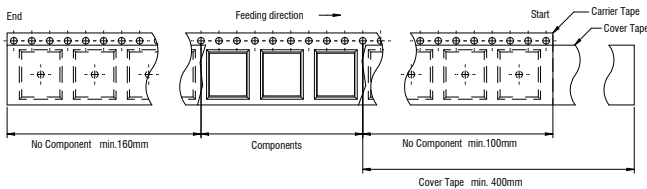
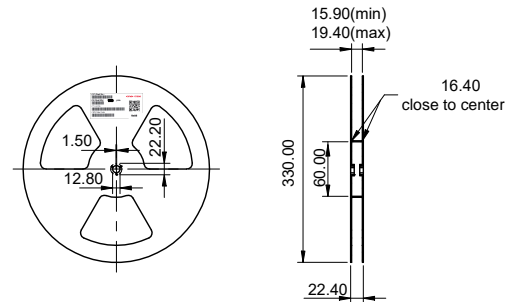
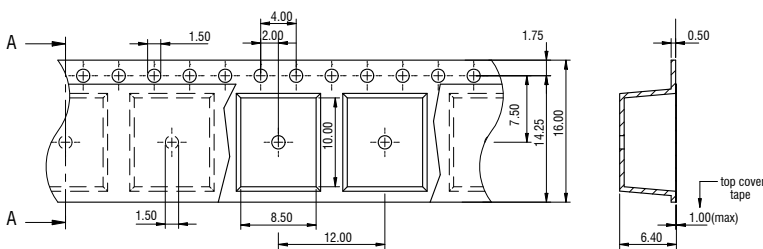
SCHEMATICS



IMPEDEANCE FREQUENCY



TAPING AND PACKING



Packaging unit:1000PCS

Quantity (pcs):
 7000 PCS PER REEL
 3 REELS PER CARTON
 21000 PCS PER CARTON