

INTERCONNECTS

SERIES 334 • .100" GRID INTERCONNECT HEADERS • SINGLE ROW STRIPS

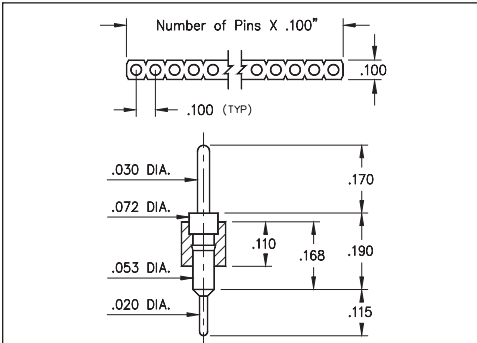


FIG. 1

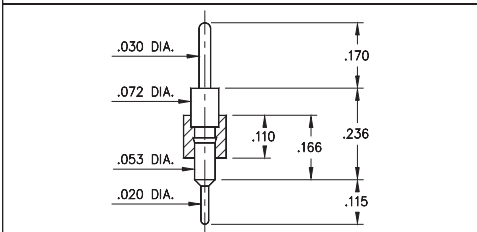


FIG. 2

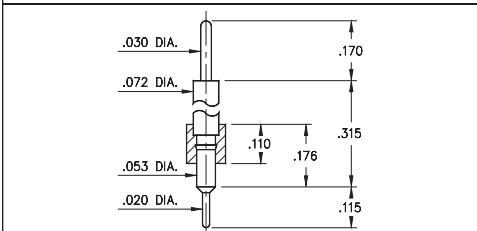


FIG. 3

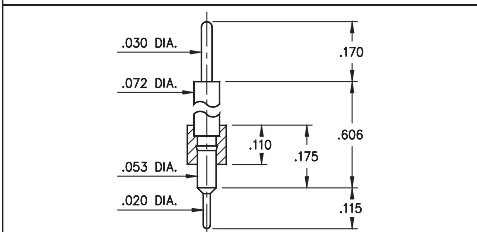


FIG. 4

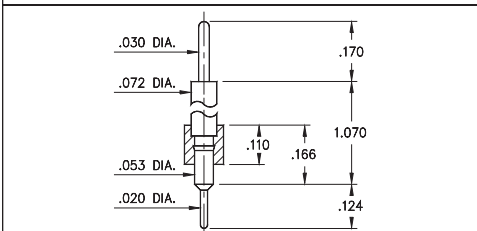


FIG. 5

- Series 334 interconnect header strips are available in 5 lengths:

334...020 uses pin #3402 (L = .190")

334...010 uses pin #3401 (L = .236")

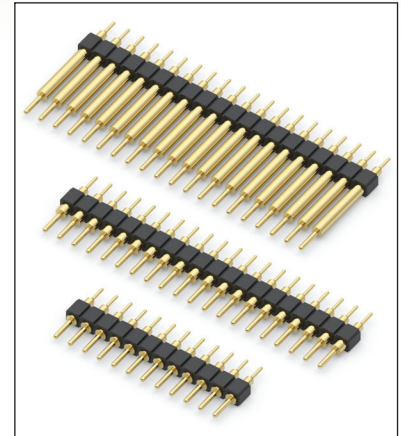
334...050 uses pin #3405 (L = .315")

334...000 uses pin #3400 (L = .606")

334...100 uses pin #3410 (L = 1.070")

See page 215 for details

- Strips come with .020" pluggable soldertails at one end and .030" tails at the other
- Insulators are high temperature thermoplastic, suitable for all soldering operations



ORDERING INFORMATION

	Series 334...020	.020" / .030" Dia. Solder Tails
FIG. 1	334-XX-1	-00-020000 ↑ Specify number of pins 01-64
FIG. 2	Series 334...010	.020" / .030" Dia. Solder Tails
	334-XX-1	-00-010000 ↑ Specify number of pins 01-64
FIG. 3	Series 334...050	.020" / .030" Dia. Solder Tails
	334-XX-1	-00-050000 ↑ Specify number of pins 01-64
FIG. 4	Series 334...000	.020" / .030" Dia. Solder Tails
	334-XX-1	-00-000000 ↑ Specify number of pins 01-64
FIG. 5	Series 334...100	.020" / .030" Dia. Solder Tails
	334-XX-1	-00-100000 ↑ Specify number of pins 01-64



XX=Plating Code
See Below

For
Electrical, Mechanical
& Environmental Data,
See page 264

SPECIFY PLATING CODE XX=	10	90	40	
Pin Plating 	10 μ" Au	200 μ" Sn/Pb	200 μ" Sn	



Mouser Electronics

Authorized Distributor

Click to View Pricing, Inventory, Delivery & Lifecycle Information:

Mill-Max:

[334-90-164-00-100000](#) [334-90-164-00-050000](#) [334-90-164-00-020000](#) [334-90-164-00-010000](#) [334-90-164-00-000000](#) [334-90-132-00-100000](#) [334-90-132-00-050000](#) [334-90-132-00-020000](#) [334-90-132-00-010000](#) [334-90-132-00-000000](#) [334-90-120-00-100000](#) [334-90-120-00-050000](#) [334-90-120-00-020000](#) [334-90-120-00-010000](#) [334-90-120-00-000000](#) [334-10-164-00-100000](#) [334-10-164-00-050000](#) [334-10-164-00-000000](#) [334-10-132-00-100000](#) [334-10-132-00-050000](#) [334-10-132-00-020000](#) [334-10-132-00-010000](#) [334-10-132-00-000000](#) [334-10-120-00-100000](#) [334-10-120-00-050000](#) [334-10-120-00-020000](#) [334-10-120-00-010000](#) [334-10-120-00-000000](#) [334-40-164-00-100000](#) [334-40-164-00-050000](#) [334-40-164-00-020000](#) [334-40-164-00-010000](#) [334-40-164-00-000000](#) [334-40-132-00-100000](#) [334-40-132-00-050000](#) [334-40-132-00-020000](#) [334-40-132-00-010000](#) [334-40-132-00-000000](#) [334-40-120-00-100000](#) [334-40-120-00-050000](#) [334-40-120-00-020000](#) [334-40-120-00-010000](#) [334-40-120-00-000000](#) [334-10-164-00-010000](#) [334-10-164-00-020000](#) [334-10-114-00-020000](#)