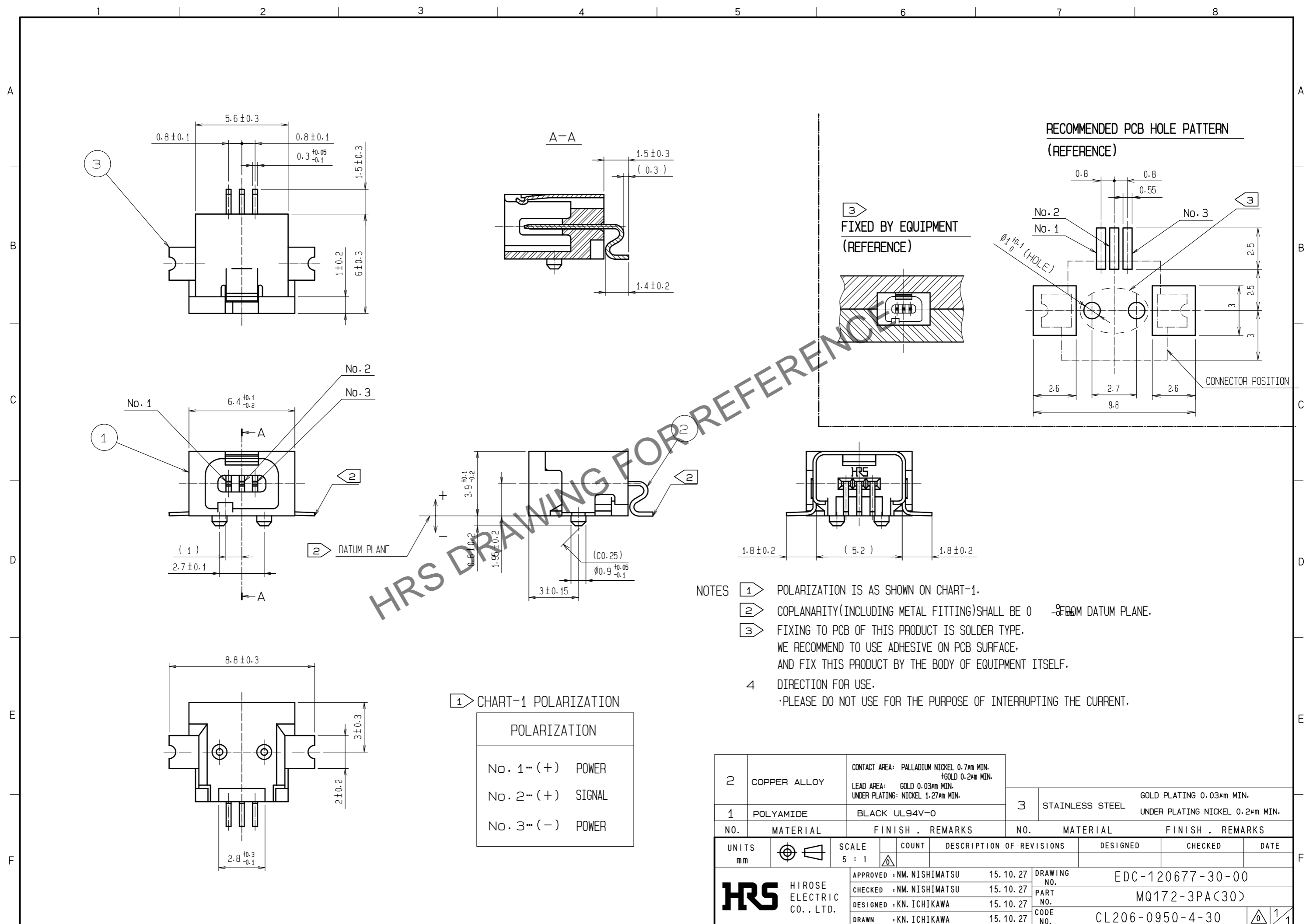


Jul.1.2024 Copyright 2024 HIROSE ELECTRIC CO., LTD. All Rights Reserved.
 In case of consideration for using Automotive equipment / device which demand high reliability, kindly contact our sales window correspondents.



- NOTES
 1 POLARIZATION IS AS SHOWN ON CHART-1.
 2 COPLANARITY(INCLUDING METAL FITTING)SHALL BE 0 FROM DATUM PLANE.
 3 FIXING TO PCB OF THIS PRODUCT IS SOLDER TYPE. WE RECOMMEND TO USE ADHESIVE ON PCB SURFACE, AND FIX THIS PRODUCT BY THE BODY OF EQUIPMENT ITSELF.
 4 DIRECTION FOR USE. PLEASE DO NOT USE FOR THE PURPOSE OF INTERRUPTING THE CURRENT.

2	COPPER ALLOY	CONTACT AREA: PALLADIUM NICKEL 0.7µm MIN. +GOLD 0.2µm MIN.	3	STAINLESS STEEL	GOLD PLATING 0.03µm MIN. UNDER PLATING NICKEL 0.2µm MIN.			
1	POLYAMIDE	BLACK UL94V-0						
NO.	MATERIAL	FINISH . REMARKS	NO.	MATERIAL	FINISH . REMARKS			
UNITS	mm	SCALE	5 : 1	COUNT	DESCRIPTION OF REVISIONS	DESIGNED	CHECKED	DATE
		APPROVED : NM. NISHIMATSU 15.10.27 CHECKED : NM. NISHIMATSU 15.10.27 DESIGNED : KN. ICHIKAWA 15.10.27 DRAWN : KN. ICHIKAWA 15.10.27		DRAWING NO. EDC-120677-30-00 PART NO. MQ172-3PA(30) CODE NO. CL206-0950-4-30		1/1		