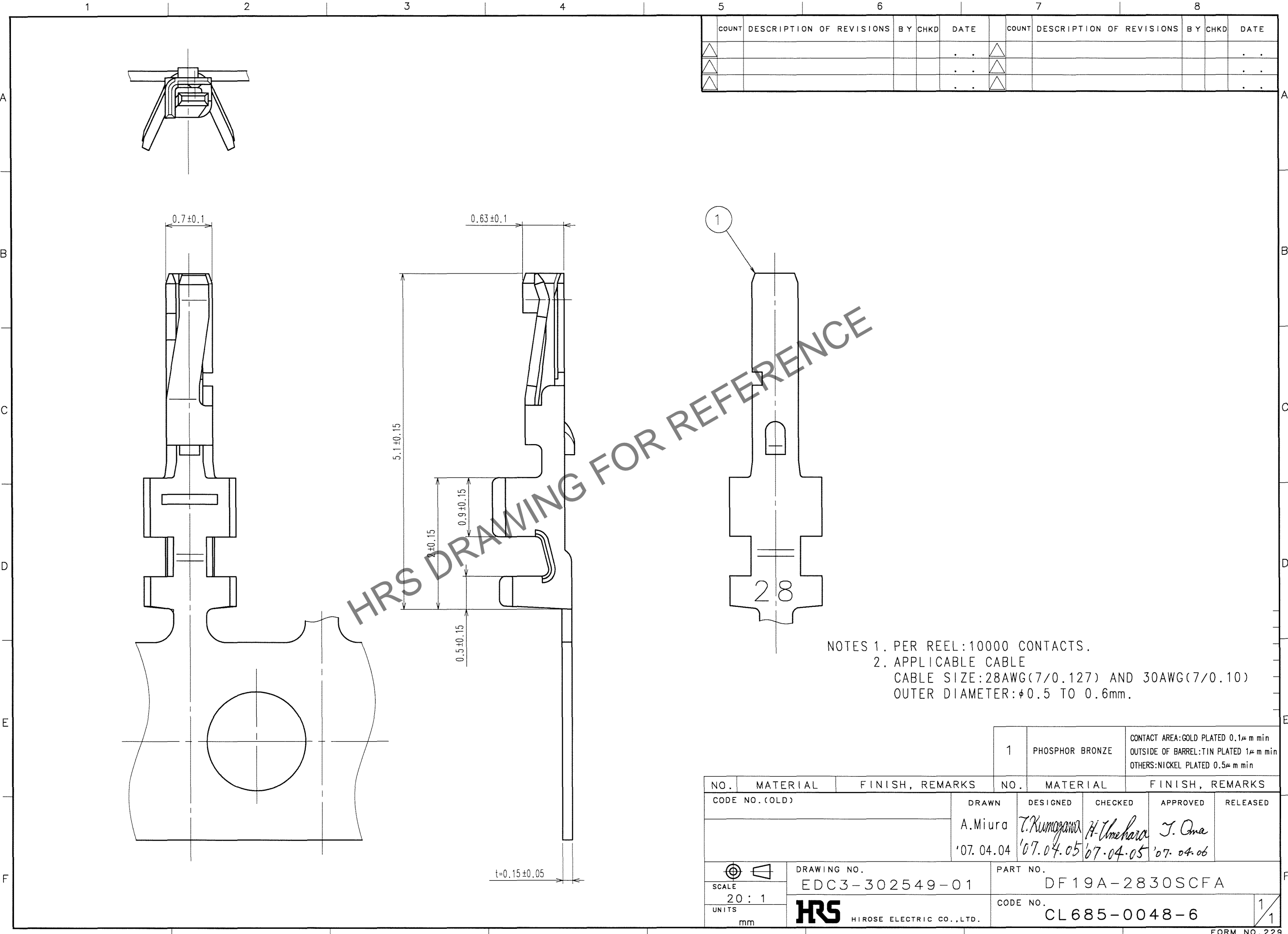


Jun.1.2024 Copyright 2024 HIROSE ELECTRIC CO., LTD. All Rights Reserved.
In case of consideration for using Automotive equipment / device which demand high reliability, kindly contact our sales window correspondents.



COUNT	DESCRIPTION OF REVISIONS	BY	CHKD	DATE	COUNT	DESCRIPTION OF REVISIONS	BY	CHKD	DATE
△				..	△				..
△				..	△				..
△				..	△				..

NOTES 1. PER REEL: 10000 CONTACTS.
2. APPLICABLE CABLE
CABLE SIZE: 28AWG(7/0.127) AND 30AWG(7/0.10)
OUTER DIAMETER: $\phi 0.5$ TO 0.6 mm.

TO

NO. 1	MATERIAL PHOSPHOR BRONZE	FINISH, REMARKS CONTACT AREA: GOLD PLATED $0.1 \mu\text{m}$ min OUTSIDE OF BARREL: TIN PLATED $1 \mu\text{m}$ min OTHERS: NICKEL PLATED $0.5 \mu\text{m}$ min
NO.	MATERIAL	FINISH, REMARKS
CODE NO. (OLD)	DRAWN A.Miura	DESIGNED T. Kumagawa
	'07.04.04	'07.04.05
		Checked H. Umehara
		Approved J. Oma
		'07.04.06
DRAWING NO. EDC3-302549-01		PART NO. DF19A-2830SCFA
UNITS mm		CODE NO. CL685-0048-6
HRS HIROSE ELECTRIC CO., LTD.		1/1