

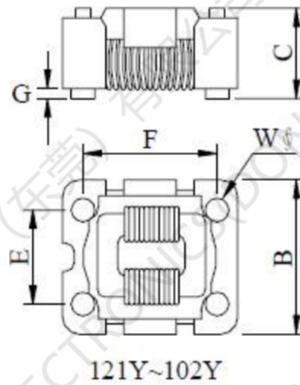
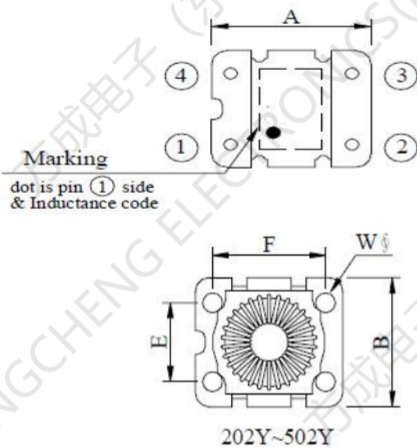
## SMD Common Mode Line Filter

### FC-SLF1065 –Series

- Small size
- High Impedance up to 13000 Ω
- High current up to 2500mA
- Ambient temperature: -40°C to +85°C
- Storage temperature Component: -40°C to +125°C

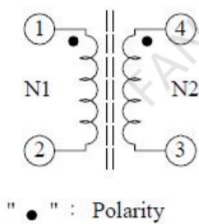


### 1. Dimensions:mm

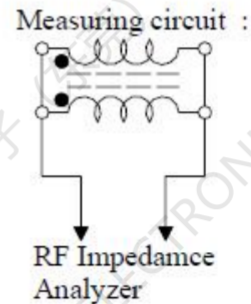


A	: 10.00±0.3	m/m
B	: 8.70±0.3	m/m
C	: 6.50 max.	m/m
E	: 6.22±0.1	m/m
F	: 7.62±0.1	m/m
G	: 0.30 min.	m/m
W	: 1.50 ref.	m/m

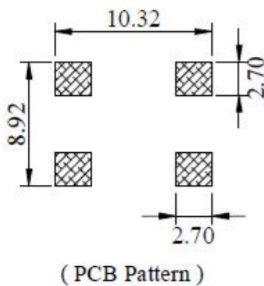
### 2.Schematic:



### 3. Test Setup:



### 4.LAYOUT RECOMMENDATION



**FC-SLF1065 –Series SMD Common Mode Line Filter**

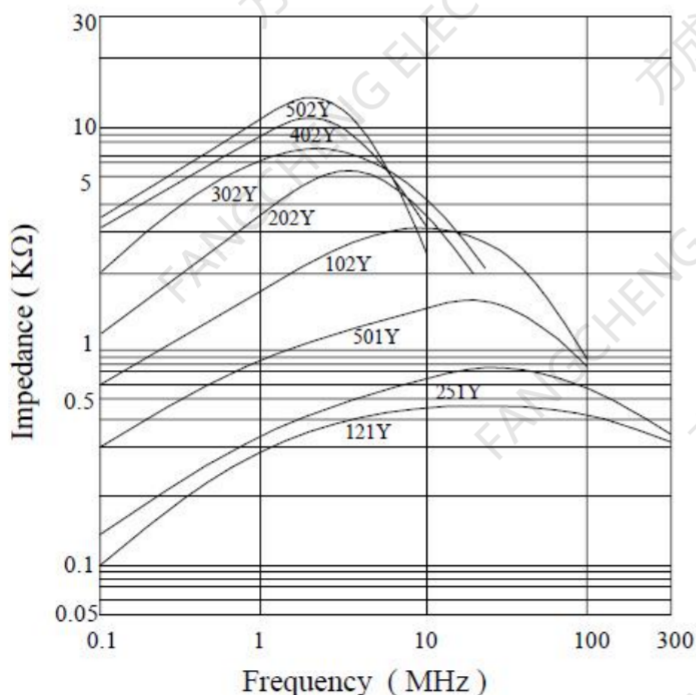
**5. ELECTRIC CHARACTERICS**

Part Number	Turns Ration	Current Rating (mA)	Inductance (uH)	RDC (Ω)	Z / Max (Ω)	WE Number
						WE-SLM
FC-SLF1065121	1:1	2500	2*120	0.025	460	744272121
FC-SLF1065221	1:1	2200	2*220	0.032	780	744272221
FC-SLF1065251	1:1	2000	2*250	0.035	970	744272251
FC-SLF1065471	1:1	1600	2*470	0.065	1750	744272471
FC-SLF1065102	1:1	950	2*1000	0.180	3600	744272102
FC-SLF1065202	1:1	750	2*2200	0.300	7500	744272222
FC-SLF1065302	1:1	650	2*3300	0.360	8900	744272332
FC-SLF1065402	1:1	520	2*3900	0.540	9600	744272392
FC-SLF1065502	1:1	350	2*4700	0.720	13000	744272472

**Electrical Specifications @ 25°C — Operating Temperature -40°C to +125°C .**

Test equipment: Inductance(HP-4274A 100KHZ/0.1V)

**6.IMPEDANCE VS . FREQUENCY :**



Measuring circuit :

