



Edition  
04/2022

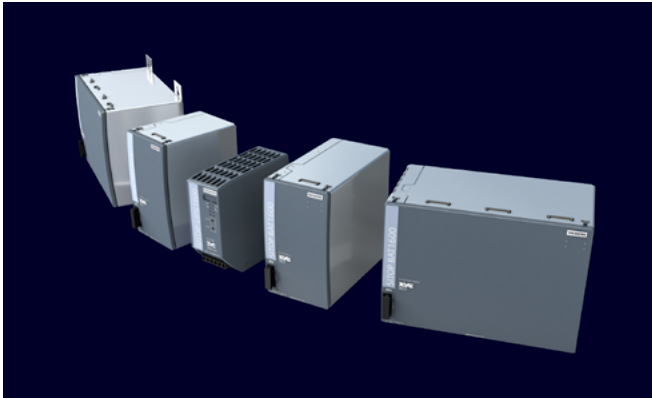
THE HEART OF AUTOMATION

# SITOP Power Supply

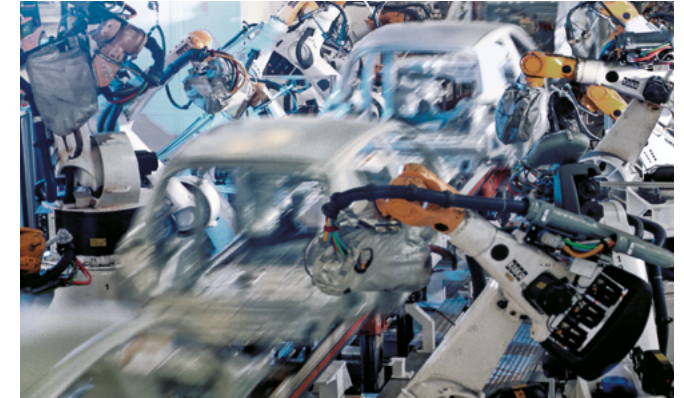
Three reasons for SITOP: reliability, efficiency, and integration.

[siemens.com/sitop](https://www.siemens.com/sitop)

**SIEMENS**



SITOP UPS1600 – The new BAT1600 battery modules for the SITOP DC UPS are your guarantee of even higher system availability: The State of Health (SOH) display keeps you up to date with battery health and service life.



[See highlight topics](#)



SITOP PSU6200 – The all-round power supply for a wide range of applications, and now available for high power ranges with efficient 960 W power supplies. See [pages 8–9](#) and technical details on [pages 26–28](#).

## SITOP power supplies bring production plants to life.

An efficient power supply is a basic requirement for operating any plant, no matter the industry or need. Critical production processes can only be maintained if a constant power supply of the necessary quality is available for the automation system. For decades, SITOP – the heart of automation – has been bringing production plants to life. The complete, precisely coordinated range of products guarantees a reliable power supply, and is especially suited to the growing demands of our time.

# Three good reasons for SITOP



## Reliability

SITOP has proven its reliability in nearly all networks around the world. With a flexible, wide-range input, outstanding load characteristics, and all the relevant certifications, SITOP power supply units safeguard the availability of your plant. Add-on modules prevent problems on the line or DC side. And when upgraded to an uninterruptible power supply, the 24-V power supply units bridge power failures for a period of seconds, minutes, or hours. In the event of a fault-specific



## Efficiency

Reduced energy costs are a valuable competitive advantage. SITOP makes an important contribution, because the primary switched-mode power supply units operate highly efficiently. For example, SITOP PSU6200 has an efficiency of up to 96.6 percent. Losses are low throughout the entire load range, even in no-load operation. This is because a power supply is rarely operated at full load. SITOP PSU8600, on the other hand, records power data from all outputs, which is then further



## Integration

SITOP sets a benchmark in terms of integration: Complete integration of the SITOP PSU8600 power supply system and SITOP UPS1600 DC UPS in Totally Integrated Automation, the TIA Portal, and the new SITOP Manager saves time and money and facilitates fail-safe engineering. For the selectivity modules and the SITOP PSU6200 product line, S7 function blocks evaluate important diagnostic information. The SITOP UPS1600 can easily be integrated via USB or Ethernet to protect

redundant power supply solutions are also an option. If a replacement is ever needed, our global customer service ensures the fastest possible delivery: All SITOP products can be supplied from stock.

processed in energy management systems. And via PROF-energy, power supply outputs can be switched off selectively: for example, during breaks.

Efficiency also characterizes the product lifecycle. With the TIA Selection Tool, we offer you special tools to make it easy to select a power supply and DC UPS. We provide you with all the design data for all common CAE systems as well as the corresponding product documentation.

PC-based automation systems from power failures. And the SITOP library for SIMATIC PCS 7 enables a transparent 24-V supply in the process control system during ongoing operation. Besides PROFINET, SITOP PSU8600 and SITOP UPS1600 also communicate via OPC UA. With the OPC UA server, it's also possible to directly integrate units such as controllers or PCs into automation applications with OPC UA clients from different vendors.

## Three SITOP categories for the different demands on an industrial power supply

### Advanced power supplies

The switched-mode power supply units in the Advanced performance class are the optimal choice for maximum reliability and functionality as required in the process and automotive industries, in special-purpose machine manufacturing, and in harsh environments. The SITOP PSU8200 product line meets these extreme requirements thanks, for example, to their overload behavior, efficiency, and compactness. SITOP PSU8600 also offers a power supply system with open communication for optimal integration into the digital environment.

### Standard power supplies

Our standard portfolio was designed for industrial applications like those in special-purpose machine manufacturing. Development of the new SITOP PSU6200 all-around power supply was based on our experience with the proven SITOP smart product line. This new SITOP standard power supply features even higher efficiency, comprehensive diagnostic options, and greater ruggedness.

### Basic power supplies

From flat power supplies for distribution boards to cost effective basic power supplies and slim power supply units for control boxes – even in the low-performance range, SITOP leaves nothing to be desired. LOGO!Power offers you miniature power supply units in the LOGO! module design. And SITOP lite meets the most important requirements for reliable primary switched-mode regulators at an affordable price.

# Overview of SITOP product lines

What an optimal power supply looks like depends on numerous factors – size, performance range, and functions,

to name but a few. The extensive range of SITOP products ensures that your power supply will always match your requirements.

## Advanced power supplies



### SITOP PSU8600

#### **The power supply system for digitalization and Industry 4.0**

The innovative SITOP PSU8600 power supply system is fully integrated into Totally Integrated Automation and the TIA Portal. It's integrated directly into networked automation applications via its Ethernet/PROFINET interface or OPC UA. SITOP PSU8600 not only offers diagnostics options, it also supports the energy management of a plant or machine. The modular system can be expanded to 36 outputs and provides buffer and DC UPS modules for protection against power failures.

Datasheet pages 20–23



### SITOP PSU8200

#### **The technology power supply for demanding solutions**

SITOP PSU8200 is ideal for complex plants and machines. The wide-range input allows it to be connected to any supply system and also to withstand large voltage fluctuations. The power boost briefly delivers up to three times the rated current. And in the event of an overload, you can choose between constant current with automatic restart or latching shutdown. The high degree of efficiency reduces energy consumption, while the compact metal enclosure saves space.

Datasheet pages 24–25

## Standard power supplies



### SITOP PSU6200

#### **The all-around power supply for a wide range of applications**

SITOP PSU6200 is the extremely highperformance power supply for standard 24-, 12-, and 48-V applications. The compact and energy-efficient power supply units offer comprehensive functions and features for focused diagnostics, fast installation, and dependable operation. Whether it's LED status indicators, integration into preventive maintenance, push-in terminals, or rugged input – SITOP PSU6200 has it all.

Datasheet pages 26–28



### SITOP smart

#### **The powerful standard power supply**

SITOP smart is the optimal power supply for many 24-V and 12-V applications, featuring powerful performance and an affordable price. Even large loads can be easily switched on, due to its overload characteristics that provide 1.5 times the rated current for 5 seconds. And with a rated capacity of 120 percent at ambient temperatures up to 45°C, these slim power supply units are among the most reliable of their kind.

Datasheet pages 29–30

## Basic power supplies



### SITOP lite

#### **The cost-effective basic power supply**

SITOP lite is the power supply series for basic requirements in the industrial environment, offering all the important functions at a low cost – without compromising quality and reliability. The wide-range input with manual switchover supports connection to a wide range of single-phase supply systems.

[Datasheet page 31](#)



### LOGO!Power

#### **The flat power supply for distribution boards**

Small. Clever. LOGO!Power. The fourth generation of the globally proven miniature power supply units with a flat, stepped profile features high performance in a small space. The comprehensive functionality with flexible installation, current monitoring, and high energy efficiency permits universal use in applications with 5 V, 12 V, 15 V, and 24 V.

[Datasheet pages 32–33](#)

## SITOP DC/DC converters



### SITOP DC/DC converters

#### **Stable power supply despite fluctuating DC voltage**

SITOP DC/DC converters ensure a stable control voltage: in battery-powered vehicles, as a “refresher” in long lines, in power stations, and in the converter DC link in wind turbines or machine tools

[Datasheet pages 35](#)

## SIMATIC Design

#### **The optimal supply for SIMATIC S7 and more**

[Page 34](#)

## Special designs

#### **Equipped for special functions and conditions**

[Pages 36–37](#)