


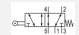







# 5/2-directional valve, Series ST

- $Q_n = 0.284 \text{ Cv}$
- Compressed air connection output G 1/8
- With spring return
- pipe connection



Version	Spool valve
Activation	mechanical
Lock type	not lockable
Switching principle	5/2
Sealing principle	metal/metal sealing
Nominal flow $Q_n$	0.284 Cv
Working pressure min./max.	-13 ... 145 psi
Ambient temperature min./max.	5 ... 176 °F
Medium temperature min./max.	5 ... 176 °F
Medium	Compressed air
Max. particle size	5 $\mu\text{m}$
Oil content of compressed air	5 ... 25 $\text{mg}/\text{m}^3$
Mounting screw	M4 with hexagon socket
Mounting screw tightening torque	1.84 ft./lbs.
Weight	See table below

## Technical data

Part No.		Actuating element	Compressed air connection
			Input
0820403001		Plunger	G 1/8
0820403002		Roller	G 1/8
0820403003		Roller lever, one-way trip	G 1/8
0820403004		Push button	G 1/8
0820403005		Lever	G 1/8
0820403016		Roller with single-action lever	G 1/8
0820403017		Roller with articulated lever	G 1/8
0820403019		Plunger	G 1/8
R422002213		panel installation	G 1/8

Part No.	Compressed air connection		Operating force min.
	Output	Exhaust	
0820403001	G 1/8	G 1/8	2.47 lbf
0820403002	G 1/8	G 1/8	1.46 lbf
0820403003	G 1/8	G 1/8	1.46 lbf
0820403004	G 1/8	G 1/8	1.46 lbf
0820403005	G 1/8	G 1/8	-
0820403016	G 1/8	G 1/8	2.25 lbf
0820403017	G 1/8	G 1/8	5.62 lbf
0820403019	G 1/8	G 1/8	1.12 lbf
R422002213	G 1/8	G 1/8	2.47 lbf

Part No.	Actuating torque	Material actuating control	Weight	Fig.	
	Min.				
0820403001	-	Stainless steel	0.485 lbs	Fig. 1	-
0820403002	-	Polyoxymethylene	0.507 lbs	Fig. 2	-
0820403003	-	Polyoxymethylene	0.507 lbs	Fig. 3	-
0820403004	-	Polyamide	0.507 lbs	Fig. 4	-
0820403005	0.02	Polyamide	0.485 lbs	Fig. 5	-
0820403016	-	Polyoxymethylene	0.75 lbs	Fig. 6	-
0820403017	-	Polyoxymethylene	0.75 lbs	Fig. 7	-
0820403019	-	Stainless steel	0.485 lbs	Fig. 8	-
R422002213	-	Polyoxymethylene	0.485 lbs	Fig. 9	1)

Nominal flow  $Q_n$  at 87 psi and  $\Delta p = 14.5$  psi

1) Please order control button separately.

## Technical information

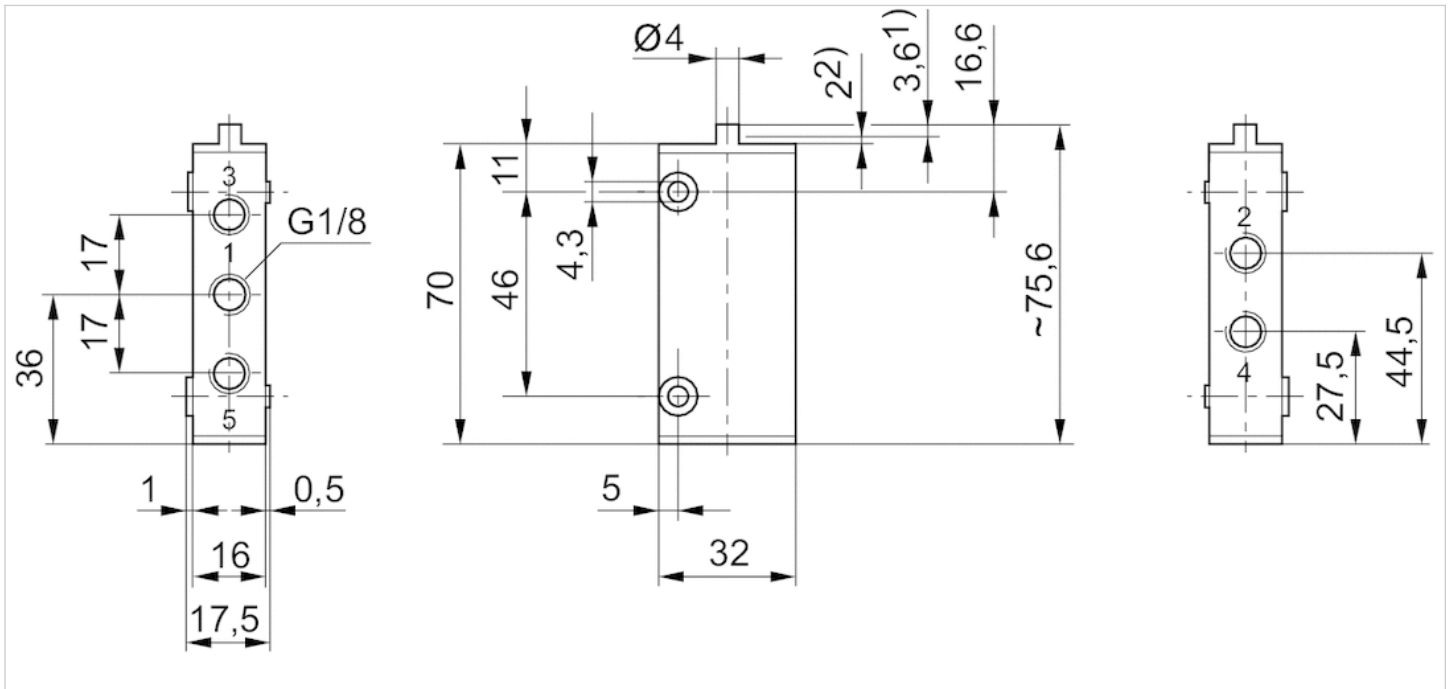
Notice: This product may only be operated with oiled compressed air.

## Technical information

Material	
Housing	Stainless steel, hardened
Seals	Acrylonitrile butadiene rubber
Actuating element	Stainless steel, Polyoxymethylene, Polyamide
Front cover	Stainless steel, Steel, Polyamide, Aluminum, Steel, galvanized

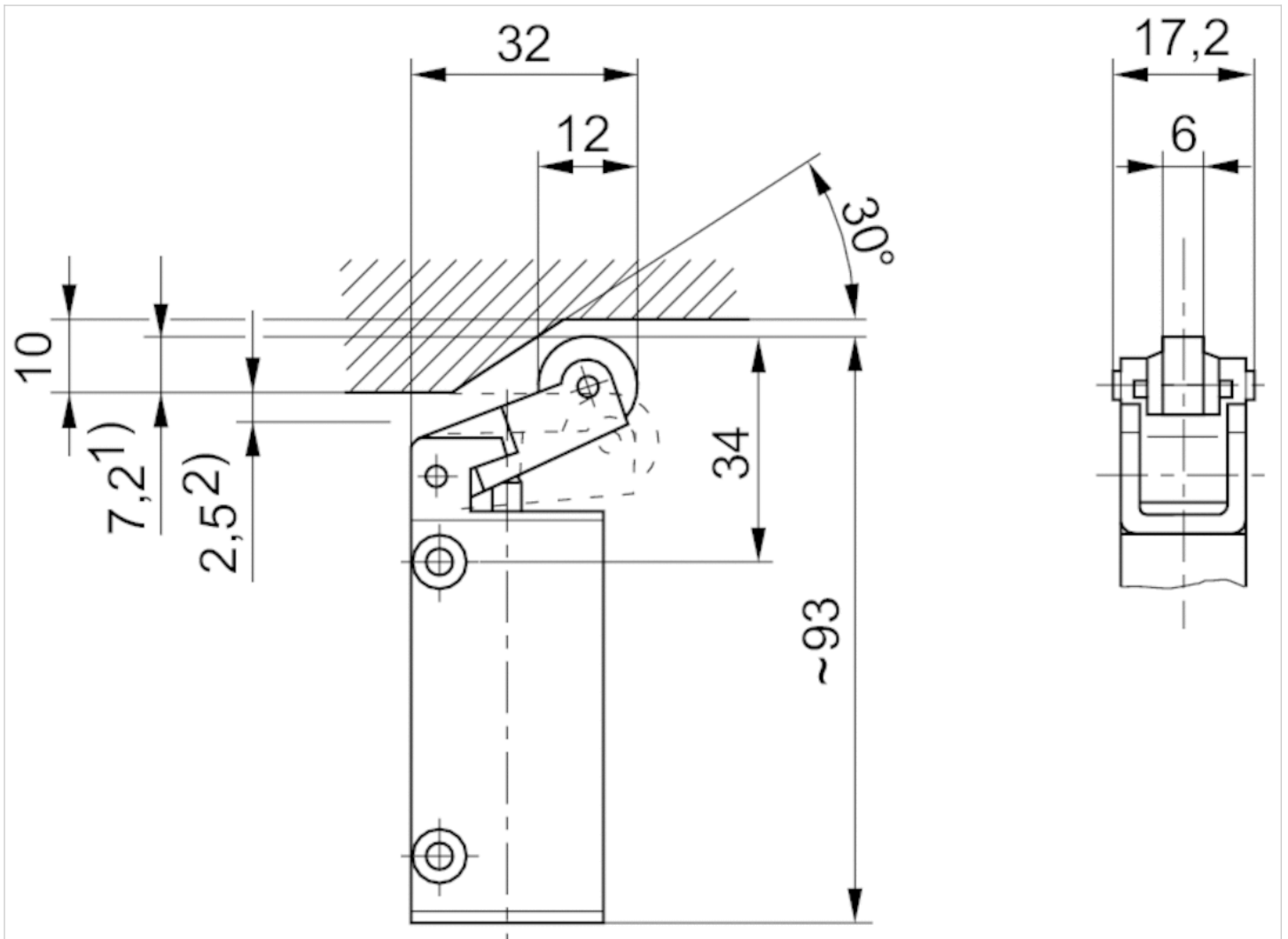
## Dimensions

### Dimensions Fig. 1 Basic valve



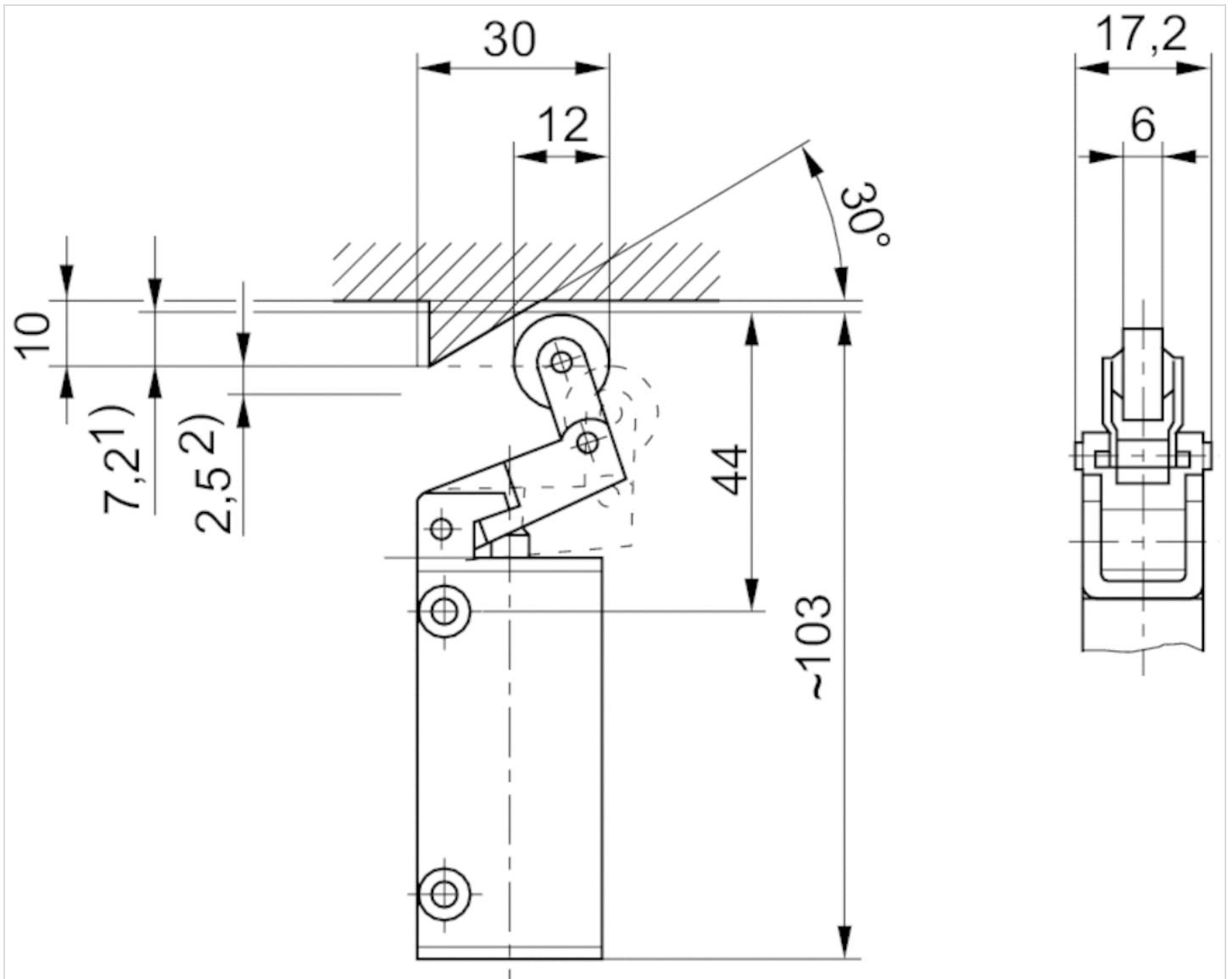
1) Actuating stroke 2) overstroke connection via 2 through-holes in housing  
 Dimensions of basic valve apply to all types of actuation.

Dimensions Fig. 2



1) Actuating stroke 2) overstroke connection via 2 through-holes in housing

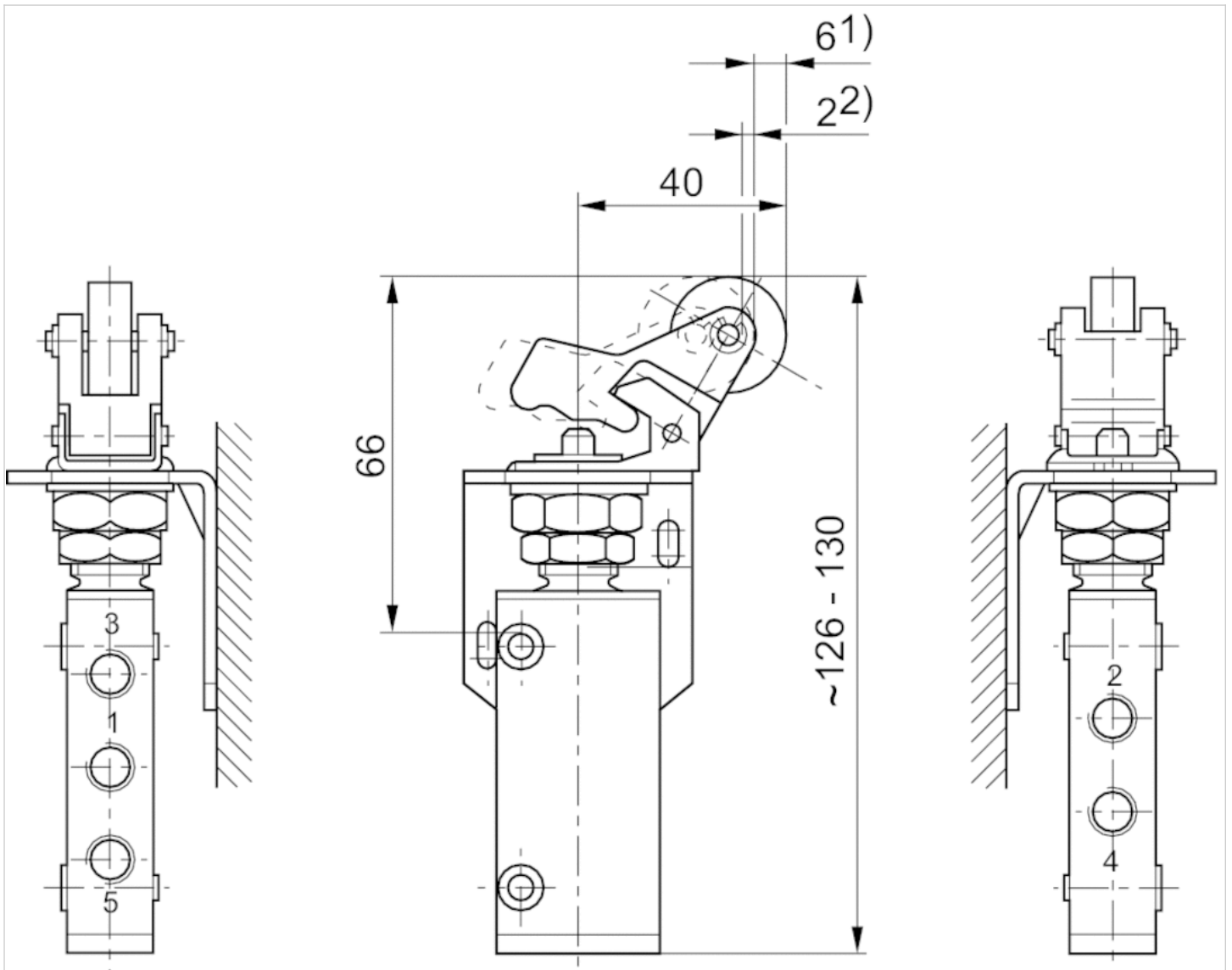
Dimensions Fig. 3



1) Actuating stroke 2) overstroke connection via 2 through-holes in housing

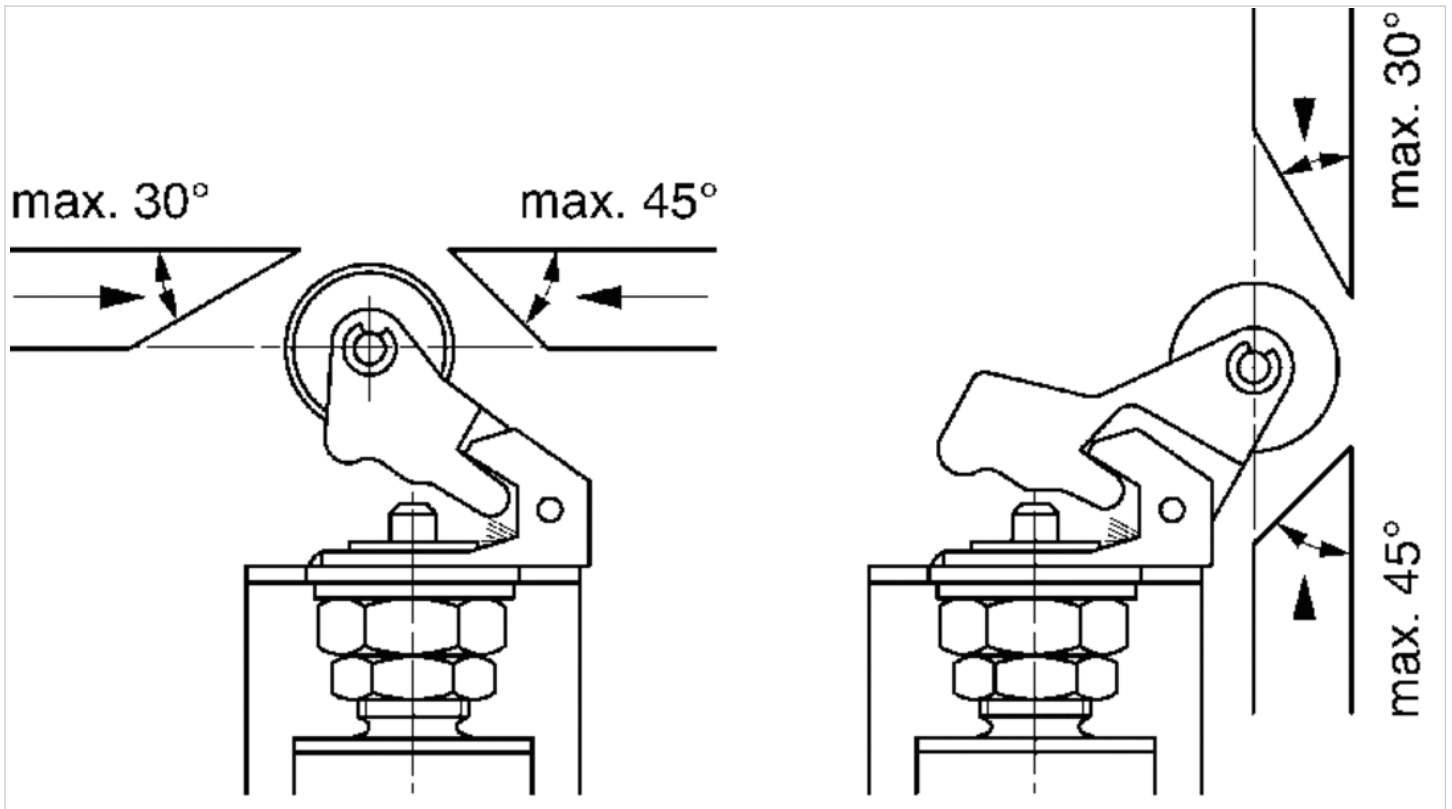


Dimensions Fig. 7

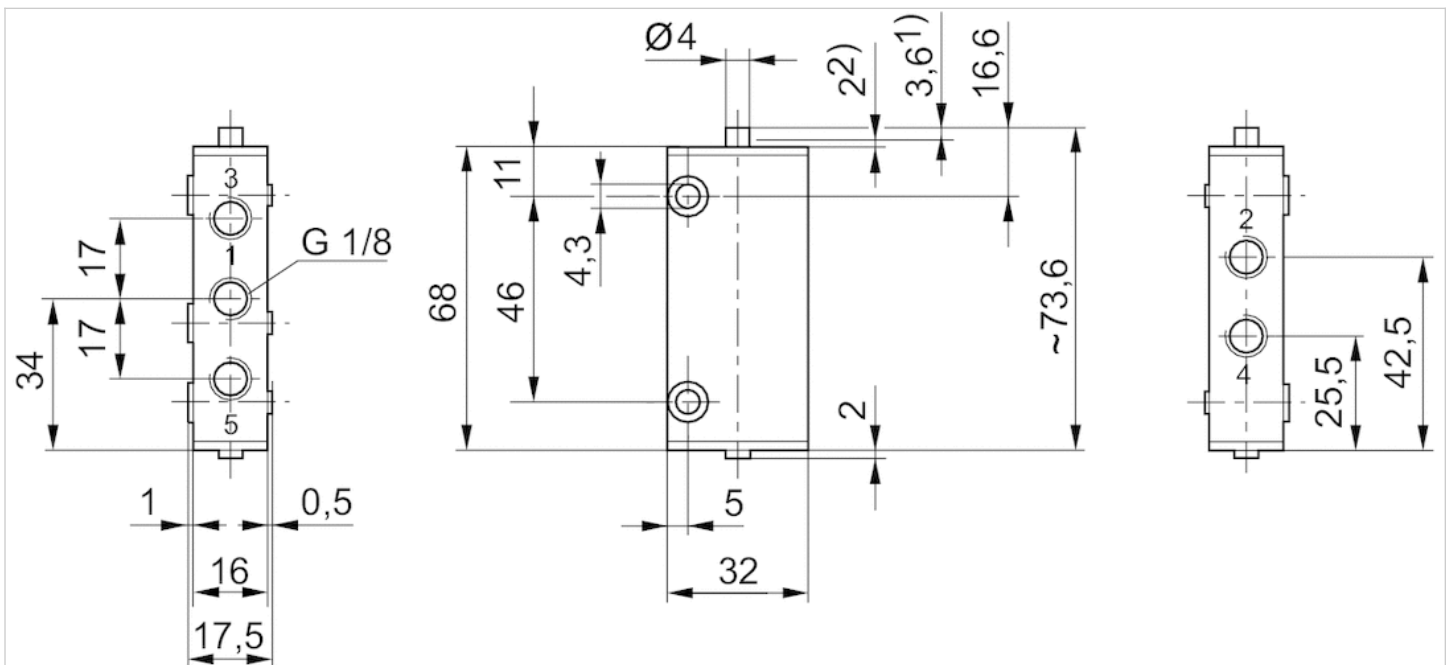


1) actuating stroke 2) overstroke Can be adjusted by 90°, thereby providing 4 different angles of approach.

angle of approach for 0820402016 and 0820402017



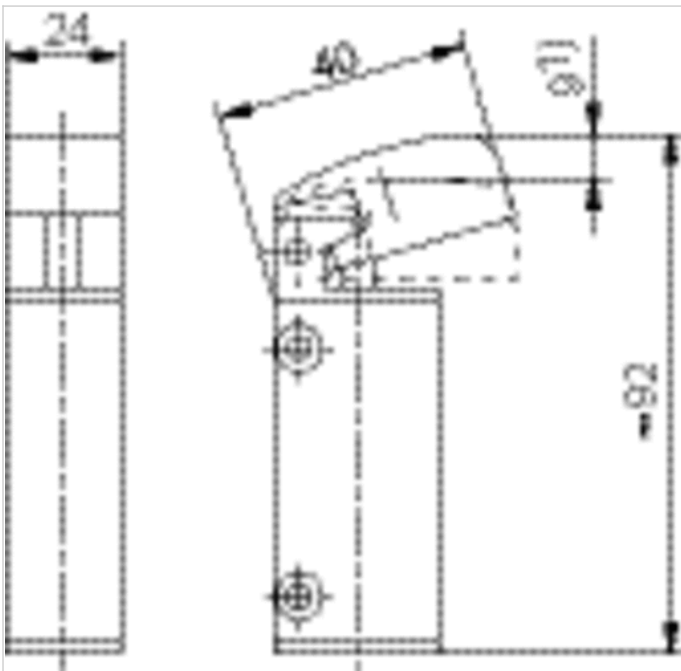
Dimensions Fig. 8



1) actuating stroke 2) overstroke connection via 2 through-holes in housing. If the plunger is displaced all the way to the housing cover, the actuating stroke changes from 3.6 to 5.6 mm.

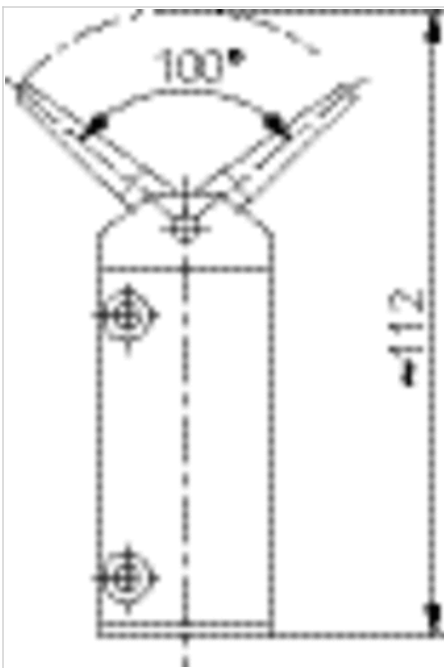


Dimensions Fig. 4



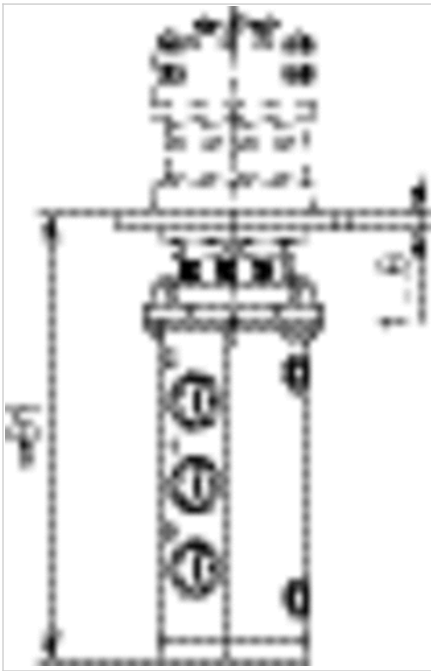
1) actuating stroke  
Mounting via 2 through-holes in housing

Dimensions Fig. 5



Mounting via 2 through-holes in housing

Overview drawing Fig. 9



Dimensions cut-out in the front plate

