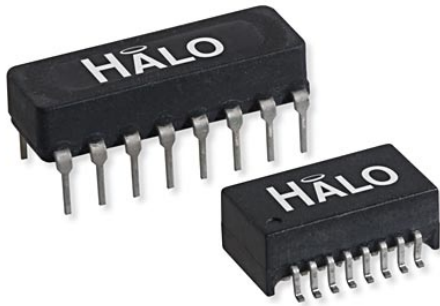


# Triad CMC Filters

16 Pin DIP and SMD Packages



## Product Features:

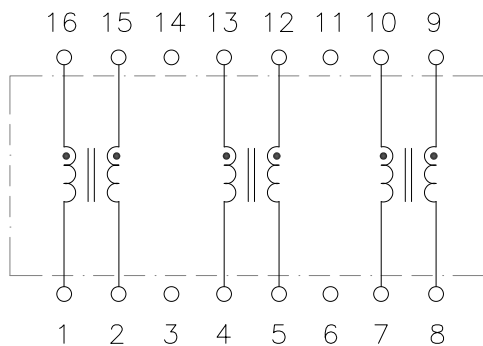
- Standard series of 16 pin triad CMC filters for Data Communications and Telecom applications.
- Compatible with IEEE 802.3 and 802.5.
- Operating Temp -40 to +85°C
- Hi Pot: 500Vrms
- Turns Ratio ( $\pm 3\%$ ): 1:1
- UL recognized materials

Part Number	Package	OCL ( $\mu\text{H typ.}$ )	LL ( $\mu\text{H max.}$ )	Cw/w (pF max.)	DCR ( $\Omega$ max.)	Impedance/Freq. Curve (typ.)
LD01-0506KRL	DIP	50	0.10	8	0.15	A
LD01-0756KRL	DIP	75	0.13	10	0.17	B
LD01-1006KRL	DIP	100	0.15	12	0.20	C
LG01-0506NLF	SMD	50	0.10	8	0.15	A
LG01-0756NLF	SMD	75	0.10	8	0.17	B
LG01-1006NLF	SMD	100	0.10	10	0.20	C

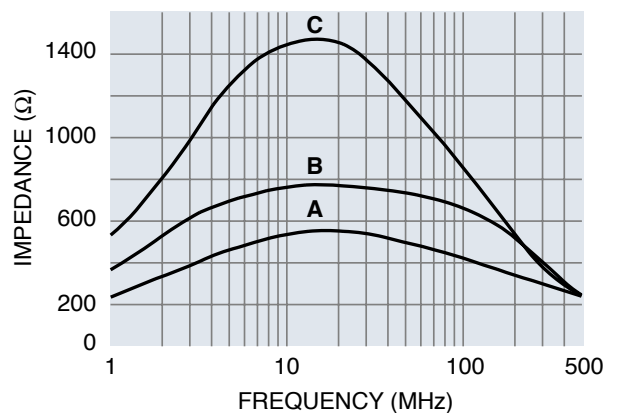
## Notes:

1. DIP (through-hole) packages are not recommended for new designs
2. Part numbers with LF suffix are RoHS compliant and PB-Free. Part numbers with RL suffix are RoHS compliant using exemption 7a.

## Schematic

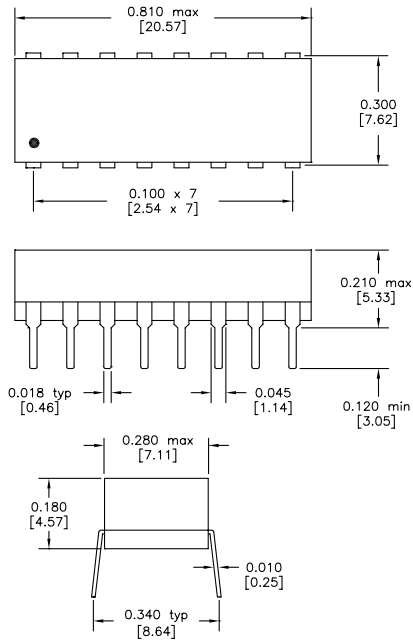


## Impedance/Freq. Curve



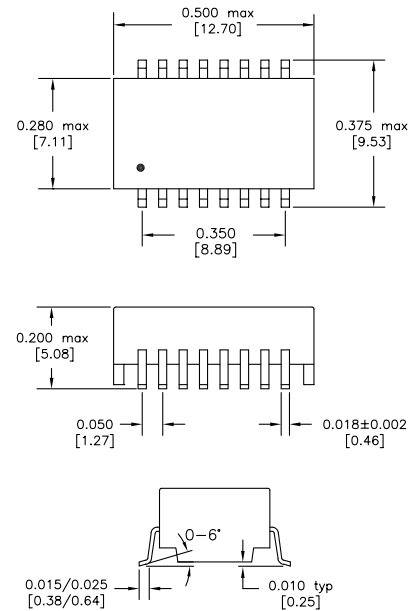
# Triad CMC Filters

## DIP Package (K)

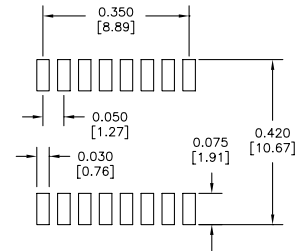


Dimensions: inches [mm]

## SMD Package (N)



Dimensions: inches [mm]  
Co-Planarity: 0.004 [0.10]



Recommended  
Solder Pad Dimensions

US Patent Numbers for SMD Devices  
 5,656,985      6,297,721 B1  
 6,297,720 B1      6,320,489 B1  
 6,344,785 B1      6,662,431 B1



2880 Lakeside Drive #116  
 Santa Clara, CA 95054  
 (650) 903-3800  
[www.haloelectronics.com](http://www.haloelectronics.com)

HALO® Electronics is a leading supplier of high quality communication magnetics including signal transformers, filters, CMR chokes, PoE power transformers, DC/DC converters, and integrated Ethernet connectors. HALO's leading edge technology solutions are manufactured in ISO9001 and ISO14001 factories offering high quality products at a competitive price.

# Mouser Electronics

Authorized Distributor

Click to View Pricing, Inventory, Delivery & Lifecycle Information:

## HALO Electronics:

[LD01-1006KRL](#) [LG01-1006NRLTR](#) [LG01-0756NRL](#) [LG01-1006NRL](#) [LG01-0506NRL](#) [LG01-0506NRLTR](#) [LG01-0756NRLTR](#) [LG01-1006NLF](#) [LG01-0506NLF](#) [LD01-0506KLF](#) [LD01-0756KLF](#) [LD01-1006KLF](#) [LG01-0756NLF](#) [LG01-0756NLFTR](#) [LG01-1006NLFTR](#) [LG01-0506NLFTR](#) [LD01-0506KRL](#) [LD01-0756KRL](#)