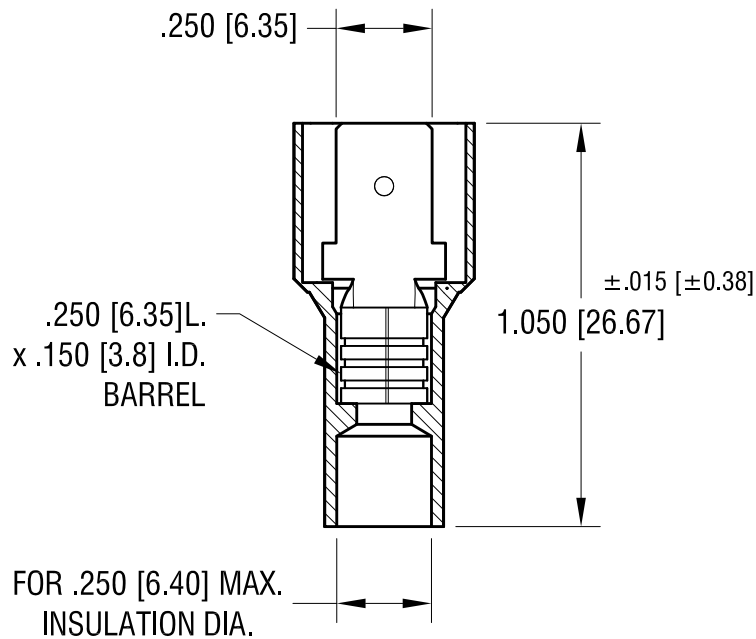
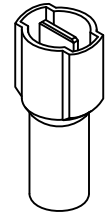
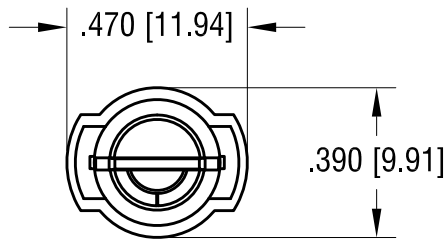


ACTUAL SIZE



NOTE:

1. TERMINAL: MALE TAB
.250 [6.35] x .032 [0.81] TH'K COPPER, TIN PLATE
INSULATOR: NYLON 6/6, YELLOW
2. ACCOMMODATES WIRE RANGE 12/10 AWG

KEYSTONE ELECTRONICS CORP.

www.keyelco.com • NEW HYDE PARK NY 11040 • Tel (516)328-7500

PART NAME

FULL INSULATED QUICK-FIT TERMINAL, MALE

MATERIAL

AS NOTED

FINISH

AS NOTED

DRN BY

NT

DATE

6.15.11

APP'D

RH

SCALE

2X

TOLERANCES

INCH

[MM]

DECIMAL

± .010 [± 0.25]

ANGULAR

± 1°

UNLESS OTHERWISE SPECIFIED

CODE

DWG NO.

C

8300

DATE

DESCRIPTION

REV.