

055107 ✓ ACTIVE

MEAS | MEAS 55000

TE Internal #: 11026436-00

TE Internal Description: 55016 GEM THERM

Model 55000 Series

[View on TE.com >](#)



Sensors > Temperature Sensors > NTC Thermistors Sensors & Probes > NTC Thermistors > Model 55000 Series



NTC Sensor Type: **Glass Encapsulated NTC Thermistor**

Lead Wire Length: **65 mm [ 2.559 in ]**

Resistance (at 25°C): **10 kΩ**

$\beta$ -Value(25/85): **3943 K**

Tolerance  $\beta$ -Value: **±0.8 %**

[All Model 55000 Series \(21\)](#)

## Features

### Product Type Features

NTC Sensor Type	Glass Encapsulated NTC Thermistor
Tolerance $\beta$ -Value	±0.8 %

### Electrical Characteristics

$\beta$ -Value(25/85)	3943 K
-----------------------	--------

### Dimensions

Lead Wire Length	65 mm[2.559 in]
------------------	-----------------

### Usage Conditions

Resistance (at 25°C)	10 kΩ
Operating Temperature Range	-55 – 150 °C[-67 – 302 °F]
Operating Temperature (Max)	150 °C[302 °F]

## Product Compliance

[For compliance documentation, visit the product page on TE.com>](#)

EU RoHS Directive 2011/65/EU	Compliant
EU ELV Directive 2000/53/EC	Not Yet Reviewed
China RoHS 2 Directive MIIT Order No 32, 2016	No Restricted Materials Above Threshold

EU REACH Regulation (EC) No. 1907/2006

Current ECHA Candidate List: JUNE 2024  
(241)Candidate List Declared Against: JAN 2022  
(223)

Does not contain REACH SVHC

Halogen Content

Not Low Halogen - contains Br or Cl > 900  
ppm.

Solder Process Capability

Not reviewed for solder process capability

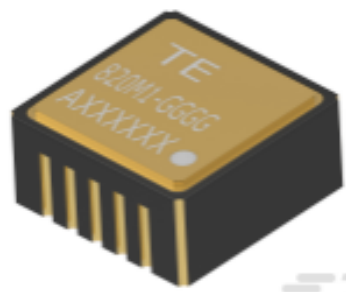
## Product Compliance Disclaimer

This information is provided based on reasonable inquiry of our suppliers and represents our current actual knowledge based on the information they provided. This information is subject to change. The part numbers that TE has identified as EU RoHS compliant have a maximum concentration of 0.1% by weight in homogenous materials for lead, hexavalent chromium, mercury, PBB, PBDE, DBP, BBP, DEHP, DIBP, and 0.01% for cadmium, or qualify for an exemption to these limits as defined in the Annexes of Directive 2011/65/EU (RoHS2). Finished electrical and electronic equipment products will be CE marked as required by Directive 2011/65/EU. Components may not be CE marked. Additionally, the part numbers that TE has identified as EU ELV compliant have a maximum concentration of 0.1% by weight in homogenous materials for lead, hexavalent chromium, and mercury, and 0.01% for cadmium, or qualify for an exemption to these limits as defined in the Annexes of Directive 2000/53/EC (ELV). Regarding the REACH Regulation, the information TE provides on SVHC in articles for this part number is based on the latest European Chemicals Agency (ECHA) 'Guidance on requirements for substances in articles' posted at this URL: <https://echa.europa.eu/guidance-documents/guidance-on-reach>

## Compatible Parts

Also in the Series | **MEAS 55000**

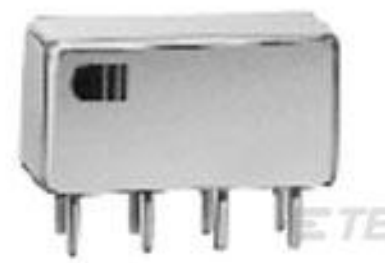
## Customers Also Bought



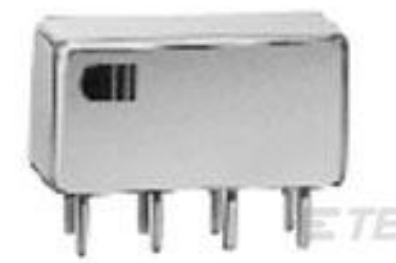
TE Part #20005836-01  
820M1-0025 Uniaxial 25g Tray 50pcs



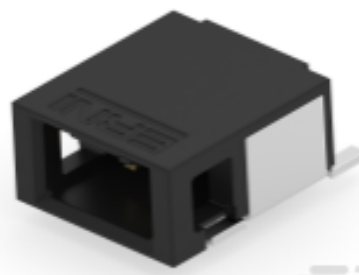
TE Part #SP44907X-22  
44907X GSFC 311P18-07S101



TE Part #2-1617030-7  
HFW1201G01M = M39016/6-116M



TE Part #2-1617030-6  
HFW1201G01 = M39016/6-116L



TE Part #504235-E  
MCBA 2 M \* SMD 137 \* 176 \* GURT \*  
J 2 50



TE Part #524401-E  
MCBP 2 F 2 035 137 \* 197 1,27 TRAY  
VR2 J



TE Part #524421-E  
MCBP 4 F 2 035 137 \* 197 1,27 TRAY  
VR2 J



TE Part #524441-E  
MCBP 6 F 2 035 137 \* 197 1,27 TRAY  
VR2 J



TE Part #CONMCX007-R178  
MCX Plug 50 Ohm Cable Crimp



TE Part #CONSMA002  
SMA RA Jack 50 Ohm PCB Through  
Hole

## Documents

### Datasheets & Catalog Pages

[Model 55000 Series Datasheet](#)

English

[Model 55016 Datasheet](#)

English