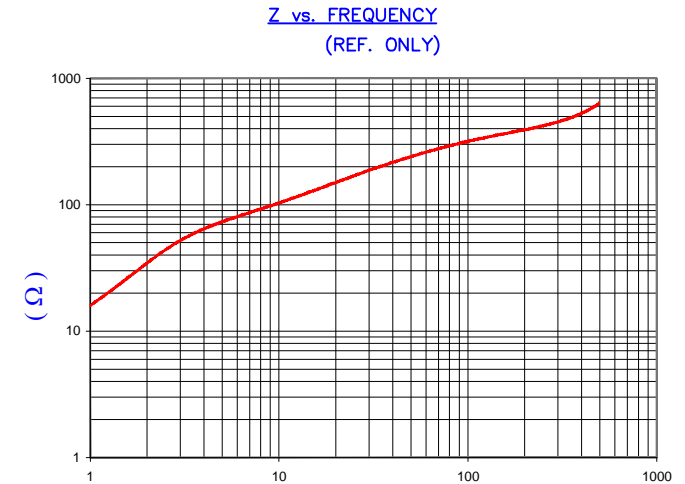


DETAIL "A"  
CHAMFER  
SCALE=8:1

IMPEDANCE ( Z )			
Frequency	25 MHz	100 MHz	300 MHz
Nominal (REF)	170 Ω	310 Ω	450 Ω
Minimum	- Ω	248 Ω	- Ω



FREQUENCY (MHz)  
AGILENT E4991A Impedance/Material Analyzer  
HP 16092A Test Fixture

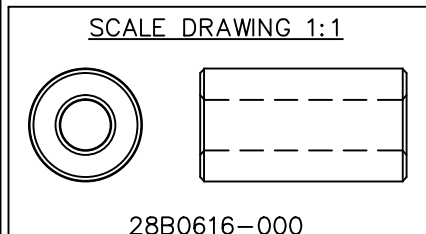
FERRITE CORE DIMENSIONS (SPEC): mm/inches

A	15.65 [.616]	±	0.30 [.012]
B	6.99 [.275]	±	0.15 [.006]
C	28.58 [1.125]	±	0.76 [.030]

WEIGHT/1000 21.64 kgs [47.7 Lbs]

NOTES: UNLESS OTHERWISE SPECIFIED

1. COSMETIC SPECIFICATION REFER TO WI-QA-038.



DIMENSIONS ARE IN MM [INCHES].				This print is the property of Laird Tech. and is loaned in confidence subject to return upon request and with the understanding that no copies shall be made without the written consent of Laird Tech. All rights to design or invention are reserved.		<b>Laird</b>			
J	UPDATE THE LOGO	05/13/15	QIU	PROJECT/PART NUMBER: <b>28B0616-000</b>		REV	J		
H	UPDATE COMPANY LOGO	03/09/09	JRK			DRAWN BY:	DJB		
G	UPDATE PRINT FORMAT & Z SPECS	03/26/03	JRK			MATERIAL: <b>Ferrite</b>			
F	UPDATE PRINT FORMAT COR PART WGT	10/14/02	JRK						
E	UPDATE TO CNZ FORMAT ADD Z CURVE REM COATING SPEC CHG P/N TO -000	09/10/02	JRK			DATE:	6/20/90	SCALE:	2:1
D	UPDATE PRINT FORMAT ADD CHAMFER DETAIL	04/18/02	JRK			CAD #	28B0616-000-J	TOOL #	B0616
C	CHG P/N TO 28B0616-00*, ADD COATING SPECS	03/17/99	I.S.						
B	UPDATED P/N FOR NEW CATALOG	10/26/95	JBE						
REV	DESCRIPTION	DATE	INT						