



PennEngineering
Corporate Headquarters – Danboro, PA

5190 Old Easton Rd.

Danboro, PA 18916

Phone: 215-766-8853

Toll-Free Phone: 1-800-237-4736 (U.S. only)

Email: info@pemnet.com

Website: www.pemnet.com

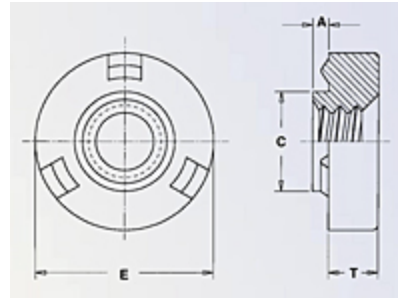
Part # WN-M5-0CU, Self-Locating Projection Weld Nuts - Metric Type WN, WNS

PEM® weld nuts (Types WN/WNS) provide load-bearing threads in metal sheets too thin to tap, and permit faster assembly.

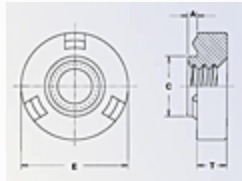
PEM brand weld nuts overcome many problems associated with other weld nuts – burn-outs, complicated electrodes and pilots, tedious time-consuming indexing and re-tapping to remove weld spatter. Their design, based on the experience of hundreds of users of weld nuts, speeds production using standard equipment, thereby reducing labor costs.

PEM stainless steel weld nuts offer the

[+ more](#)



Specifications

Thread Size x Pitch	M5 x 0.8
Type	WN
Thread Code	M5
Shank Code	0
	0.77 mm
A (Shank) Max.	
Min. Sheet Thickness	0.77 mm
Hole Size In Sheet + 0.1	6.35 mm
C Max.	6.32 mm
E - 0.25	11.18 mm
T ± 0.1	3.77 mm

Min. Dist. Hole C/L to Edge	5.59 mm
Thread Specification	6H per ASME B1.13M
Standard Material	Carbon Steel
Standard Finish	Copper Flash
CAD Supplier	PennEngineering® (PEM®)