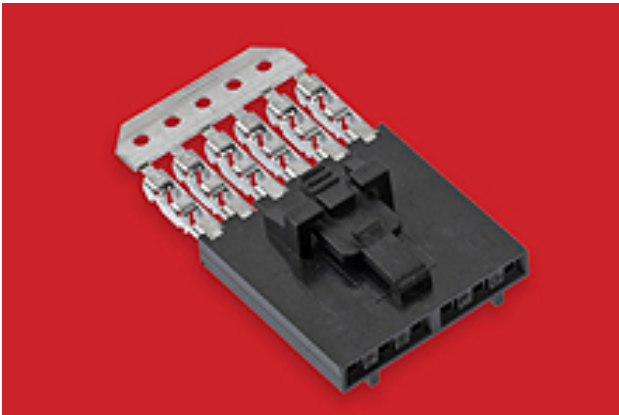




**Part Number :** [14562032](#)  
**Product Description :** 2.54mm Pitch SL  
Insulation Displacement Connector Assembly,  
Female, Single Row, Version G, Positive Lock,  
Wire Size 24 AWG, 0.38µm Gold (Au), 3  
Circuits  
**Series Number :** 70400  
**Status :** Active  
**Product Category :** Connector Housings  
**Engineering Number :** A-70400-0667



## Documents & Resources

### Drawings


[Drawing 014562032\\_sd.pdf](#)  
[Packaging Design Drawing PK-70873-0001-001.pdf](#)

### 3D Models and Design Files

[3D Model 014562032\\_stp.zip](#)

## Product Environment Compliance

### Compliance

GADSL/IMDS	Compliant with Exemption 44; 34; 33
China RoHS	
EU ELV	Not Relevant
Low-Halogen Status	Not Low-Halogen per IEC 61249-2-21
REACH SVHC	Not Contained per D(2024)4144-DC (27 June 2024)
EU RoHS	Compliant per EU 2015/863

### Multiple Part Product Compliance Statements

- Eu RoHS
- REACH SVHC
- Low-Halogen

### Multiple Part Industry Compliance Documents

- IPC 1752A Class C

- IPC 1752A Class D
- Molex Product Compliance Declaration
- IEC-62474
- chemSHERPA (xml)

## EU RoHS Certificate of Compliance

---

### Part Details

#### General

Status	Active
Category	Connector Housings
Series	70400
Description	2.54mm Pitch SL Insulation Displacement Connector Assembly, Female, Single Row, Version G, Positive Lock, Wire Size 24 AWG, 0.38µm Gold (Au), 3 Circuits
Comments	Terminals Preloaded
Component Type	Housing
Product Family	SL Modular Connectors
Product Name	SL
UPC	800753605831

#### Agency

CSA	LR19980
UL	E29179

#### Electrical

Voltage - Maximum	250V
-------------------	------

#### Physical

Circuits (Loaded)	3
Color - Resin	Black
Durability (mating cycles max)	50
Entry Angle	Vertical
Flammability	94V-0
Gender	Female
Glow-Wire Capable	No

Lock to Mating Part	Yes
Material - Metal	Phosphor Bronze
Material - Plating Mating	Gold
Material - Plating Termination	Tin
Material - Resin	Polyester Alloy
Net Weight	0.600/g
Number of Rows	1
Packaging Type	Tube
PCB Retention	None
Pitch - Mating Interface	2.54mm
Plating min - Mating	0.381µm
Plating min - Termination	1.905µm
Polarized to Mating Part	Yes
Stackable	Yes
Temperature Range - Operating	-40° to +105°C
Termination Interface Style	IDT or Pierce
Wire/Cable Type	Discrete Wire, Ribbon Cable
Wire Insulation Diameter	1.35mm max.
Wire Size (AWG)	24

## Solder Process Data

Lead-Free Process Capability	N/A
------------------------------	-----

---

## Mates With / Use With

### Mates with Part(s)

Description	Part Number
SL Single Row Housing Panel Mounts	<u>70018</u>
SL Single Row Crimp Housings	<u>70107</u>
SL Vertical Single Row Headers	<u>70543</u>
SL Vertical Single Row Headers	<u>70545</u>
SL Right-Angle, Single Row, Low Profile Headers	<u>70553</u>
SL Right-Angle Single Row Headers	<u>70555</u>

---

Application Tooling

Global

Description	Part Number
IDT Discrete Handtool Module	<u>621000700</u>
Ribbon Cable Tool Kit, Press Not Included	<u>622016600</u>