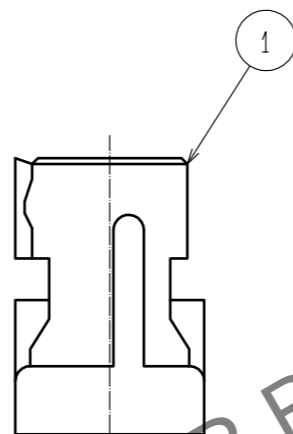
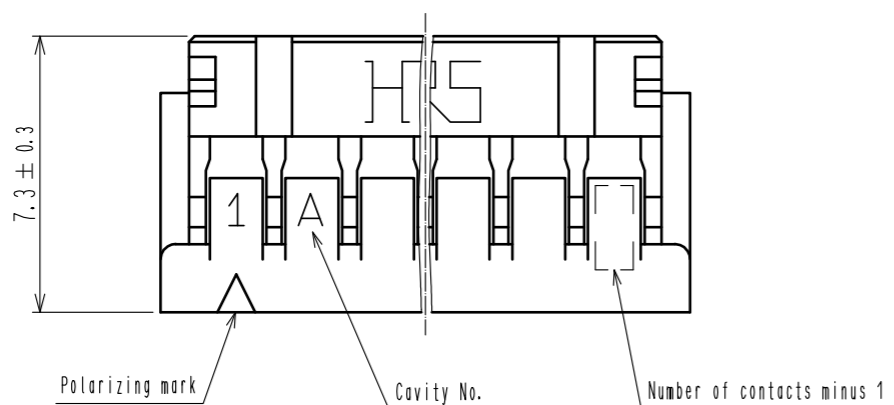
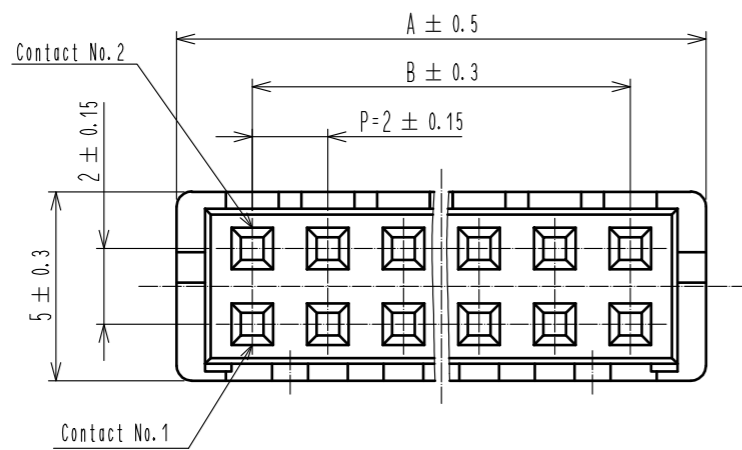
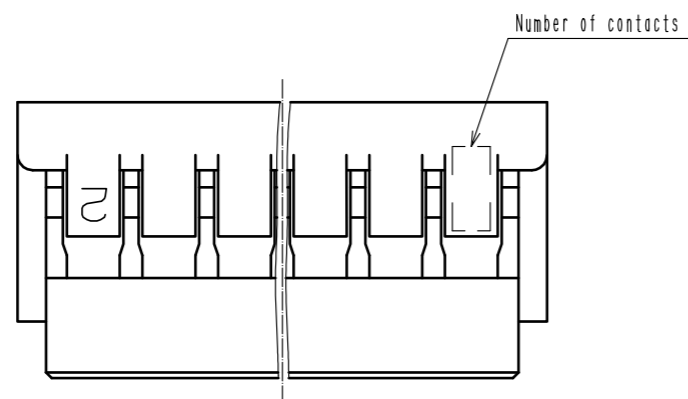
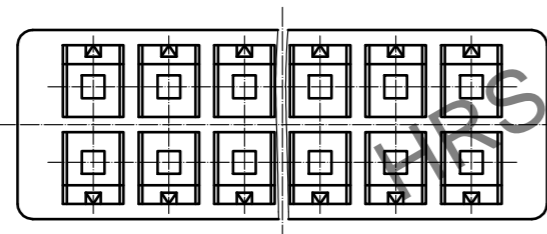


Jun.1.2024 Copyright 2024 HIROSE ELECTRIC CO., LTD. All Rights Reserved.
 In case of consideration for using Automotive equipment / device which demand high reliability, kindly contact our sales window correspondents.



| HRS No. | Part No. | Number of contact | A | B |
|--------------|--------------|-------------------|------|------|
| CL543-0568-6 | DF11- 4DS-2C | 4 | 6.0 | 2.0 |
| CL543-0502-8 | DF11- 6DS-2C | 6 | 8.0 | 4.0 |
| CL543-0503-0 | DF11- 8DS-2C | 8 | 10.0 | 6.0 |
| CL543-0504-3 | DF11-10DS-2C | 10 | 12.0 | 8.0 |
| CL543-0505-6 | DF11-12DS-2C | 12 | 14.0 | 10.0 |
| CL543-0506-9 | DF11-14DS-2C | 14 | 16.0 | 12.0 |
| CL543-0507-1 | DF11-16DS-2C | 16 | 18.0 | 14.0 |
| CL543-0508-4 | DF11-18DS-2C | 18 | 20.0 | 16.0 |
| CL543-0509-7 | DF11-20DS-2C | 20 | 22.0 | 18.0 |
| CL543-0510-6 | DF11-22DS-2C | 22 | 24.0 | 20.0 |
| CL543-0511-9 | DF11-24DS-2C | 24 | 26.0 | 22.0 |
| CL543-0512-1 | DF11-26DS-2C | 26 | 28.0 | 24.0 |
| CL543-0513-4 | DF11-28DS-2C | 28 | 30.0 | 26.0 |
| CL543-0514-7 | DF11-30DS-2C | 30 | 32.0 | 28.0 |
| CL543-0515-0 | DF11-32DS-2C | 32 | 34.0 | 30.0 |
| CL543-0516-2 | DF11-34DS-2C | 34 | 36.0 | 32.0 |

Note 1. Per pack : 100 pieces.



| NO. | MATERIAL | FINISH . REMARKS | NO. | MATERIAL | FINISH . REMARKS |
|-------------|---------------------------------|-------------------------|------------|---------------------------------|--------------------------|
| | | | 1 | Polyamide | Black, UL94V-0 |
| UNITS mm | | SCALE 5 : 1 | COUNT 1 | DESCRIPTION OF REVISIONS | |
| | | | | DESIGNED TS. MIYAKI | CHECKED TS. FUKUSHIMA |
| | | | | DATE 17. 09. 07 | |
| HRS | HIROSE ELECTRIC CO., LTD. | APPROVED : KJ. KATAYOSE | 05. 01. 05 | DRAWING NO. EDC-162389-00-01 | |
| | | CHECKED : TY. OMA | 05. 01. 05 | PART NO. DF11- *DS-2C | |
| | | DESIGNED : IO. DENPOUYA | 05. 01. 05 | CODE NO. CL543- | |
| | | DRAWN : IO. DENPOUYA | 05. 01. 05 | | |