

**MINI/CIRCULAR DINs: KMDGX Series  
Right Angle Mini-DIN**

**Product Features**

- PC99 Colors Available
- Shielded Options Available for Good Conductivity, Grounding and EMI/RFI Protection
- Mates with Standard and Snap and Lock Plugs
- Visual and Mechanical Polarization for Plug Insertion
- Reflow Compatible Design Available
- Gold Plated Contacts
- CSA/NRTL Certified File No. LR78160
- UL File No. E140125

**Performance Specifications**

**Materials and Finish**

**Body**  
PBT Thermoplastic, Black, Purple, or Green Color

**Contacts**  
Copper Alloy, Gold Plated

**Shield**  
See Drawing

**Mechanical Characteristics**

- Insertion Force**  
3.0kg Max.
- Extraction Force**  
0.3kg - 3.0kg
- Durability**  
1000 Cycles Min.

**Electrical Characteristics**

- Rated Current**  
2A
- Rated Voltage**  
12V DC
- Insulation Resistance**  
500 Megohm Min. at 500V DC
- Contact Resistance Before Durability Test**  
Plug to Terminals: 30 milliohms Max.
- After Durability Test**  
Plug to Terminals: 60 milliohms Max.
- Dielectric Withstanding Voltage**  
500V RMS AC for 1 Minute
- Operating Temperature**  
-25°C to + 80°C

2D Drawing	IGES	STEP	3D PDF
Solder Profile	CofC RoHS Compliant	CofC REACH Compliant	UL Plastic File
Certificate of Origin	Check Stock	Request a Sample	Send Us An Email

Generated Part Number

Part Number Builder

-     
 Series                      Number of Contacts                      Contact Type                      Option

**Series**

**KMDGX** - Right Angle PCB Mount Mini-DIN

**Number of Contacts**

- 3 Contacts
- 4 Contacts
- 5 Contacts
- 6 Contacts
- 7 Contacts
- 8 Contacts
- 9 Contacts
- 10 Contacts (10 Available only with BS option)

**Contact Type**

**S** - Receptacle

**Shielding Option**

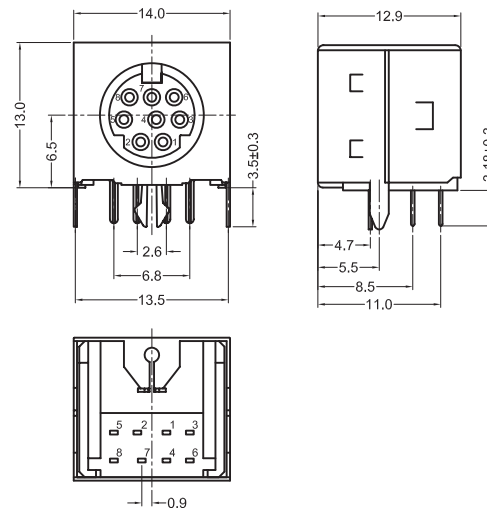
- N** - Non-Shielded
- AS** - Sides and Back Shielded
- BS** - Fully Shielded

Contact Kycon for Other Options

**KMDGX Series**

Dimensions in mm

KMDGX-8S-BS



# Mouser Electronics

Authorized Distributor

Click to View Pricing, Inventory, Delivery & Lifecycle Information:

## Kycon:

[KMDGX-10S-BS](#) [KMDGX-4S-BS](#) [KMDGX-8S-BS](#) [KMDGX-8S-AS](#) [KMDGX-4S-AS](#) [KMDGX-7S-N](#) [KMDGX-9S-AS](#)  
[KMDGX-9S-N](#) [KMDGX-3S-AS](#) [KMDGX-9S-BS](#) [KMDGX-6S-BS](#) [KMDGX-3S-BS](#) [KMDGX-7S-BS](#) [KMDGX-5S-BS](#)  
[KMDGX-3S-N](#) [KMDGX-6S-AS](#) [KMDGX-5S-AS](#) [KMDGX-6S-N](#) [KMDGX-8S-N](#) [KMDGX-5S-N](#) [KMDGX-4S-N](#) [KMDGX-7S-AS](#) [KMDGX-8S/8S-S4N1](#)