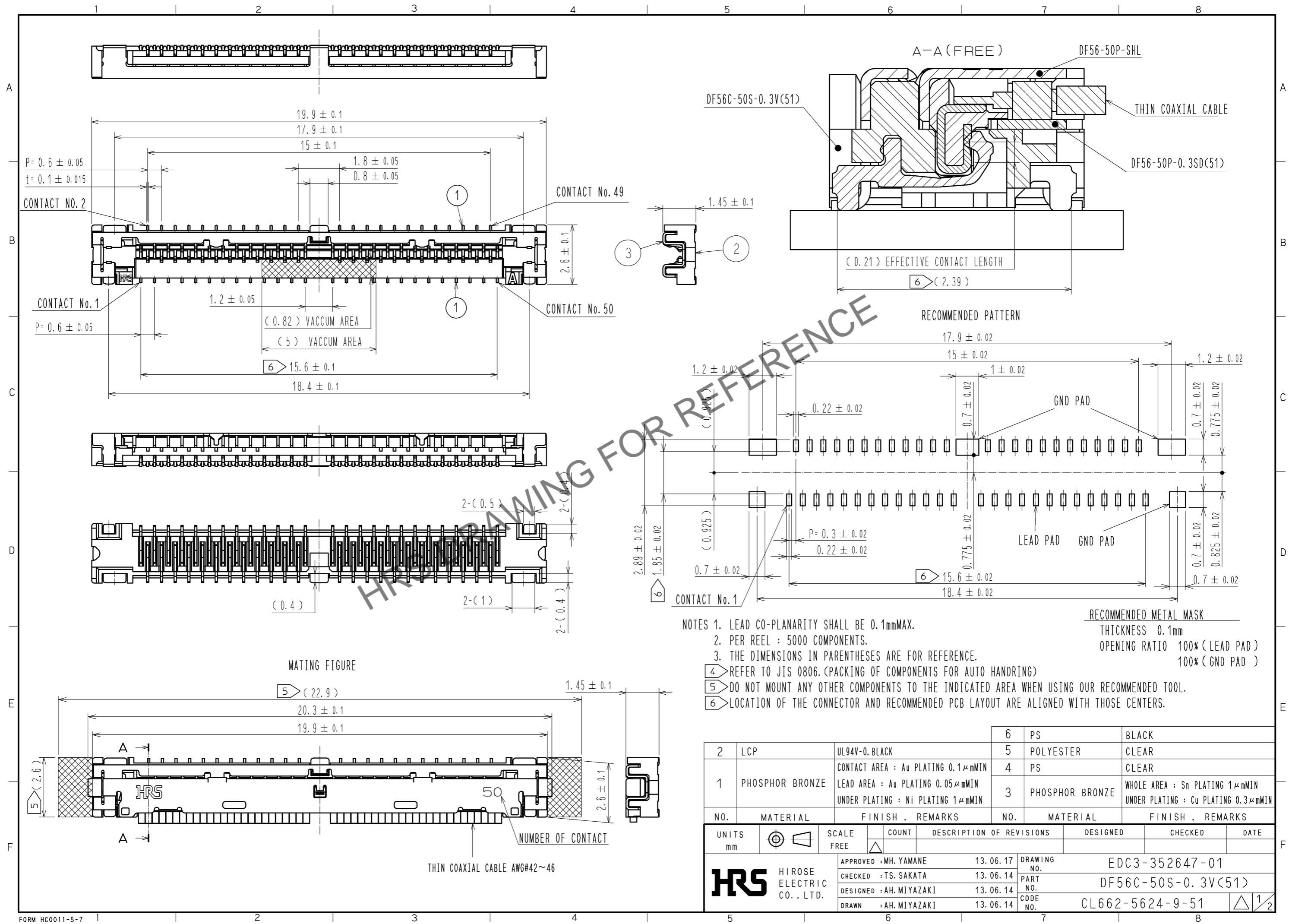


Jul.1.2024 Copyright 2024 HIROSE ELECTRIC CO., LTD. All Rights Reserved.
 In case of consideration for using Automotive equipment / device which demand high reliability, kindly contact our sales window correspondents.

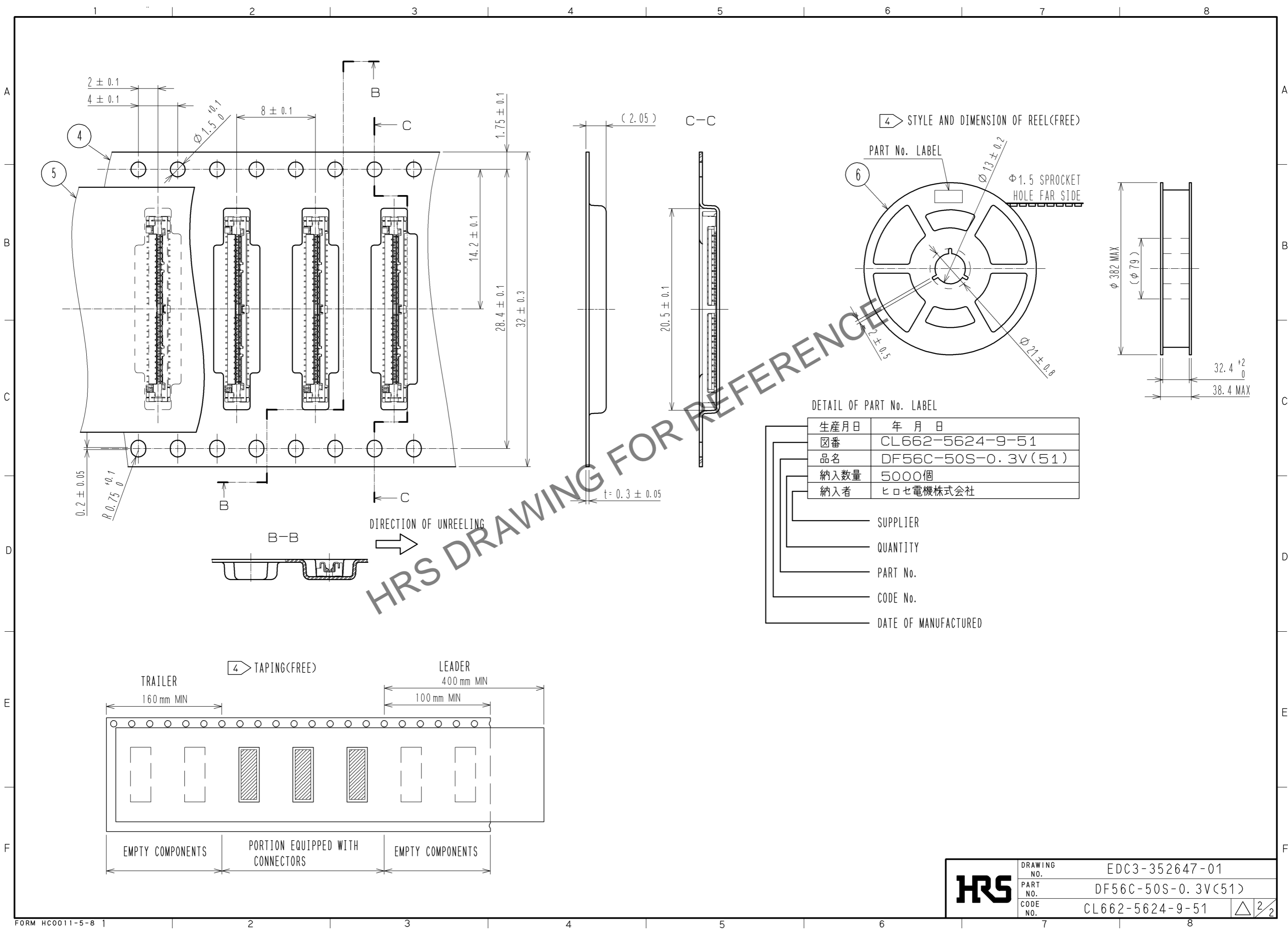


- NOTES
1. LEAD CO-PLANARITY SHALL BE 0.1mmMAX.
 2. PER REEL : 5000 COMPONENTS.
 3. THE DIMENSIONS IN PARENTHESES ARE FOR REFERENCE.
 - 4 REFER TO JIS 0806. (PACKING OF COMPONENTS FOR AUTO HANDRING)
 - 5 DO NOT MOUNT ANY OTHER COMPONENTS TO THE INDICATED AREA WHEN USING OUR RECOMMENDED TOOL.
 - 6 LOCATION OF THE CONNECTOR AND RECOMMENDED PCB LAYOUT ARE ALIGNED WITH THOSE CENTERS.

2	LCP	UL94V-0, BLACK	6	PS	BLACK
1	PHOSPHOR BRONZE	CONTACT AREA : Au PLATING 0.1μmMIN LEAD AREA : Au PLATING 0.05μmMIN UNDER PLATING : Ni PLATING 1μmMIN	5	POLYESTER	CLEAR
			4	PS	CLEAR
			3	PHOSPHOR BRONZE	WHOLE AREA : Sn PLATING 1μmMIN UNDER PLATING : Cu PLATING 0.3μmMIN
NO.	MATERIAL	FINISH, REMARKS	NO.	MATERIAL	FINISH, REMARKS

UNITS mm		SCALE FREE	COUNT △	DESCRIPTION OF REVISIONS	DESIGNED	CHECKED	DATE
		APPROVED : MH. YAMANE	13.06.17	DRAWING NO.	EDC3-352647-01		
HIROSE ELECTRIC CO., LTD.		CHECKED : TS. SAKATA	13.06.14	PART NO.	DF56C-50S-0.3V(51)		
		DESIGNED : AH. MIYAZAKI	13.06.14	CODE NO.	CL662-5624-9-51		
		DRAWN : AH. MIYAZAKI	13.06.14		1/2		

Jul.1.2024 Copyright 2024 HIROSE ELECTRIC CO., LTD. All Rights Reserved.
 In case of consideration for using Automotive equipment / device which demand high reliability, kindly contact our sales window correspondents.



DETAIL OF PART No. LABEL

生産月日	年月日
図番	CL662-5624-9-51
品名	DF56C-50S-0.3V(51)
納入数量	5000個
納入者	ヒロセ電機株式会社

- SUPPLIER
- QUANTITY
- PART No.
- CODE No.
- DATE OF MANUFACTURED

HRS	DRAWING NO.	EDC3-352647-01
	PART NO.	DF56C-50S-0.3V(51)
	CODE NO.	CL662-5624-9-51
		△ 2/2