



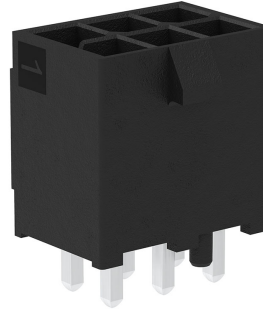
Part Number : [2125201002](#)

Product Description : Mini-Fit Max Vertical Header, Dual Row, 2 Circuits, Tin (Sn) Plating, Black, Glow-Wire Capable

Series Number : 212520

Status : Active

Product Category : PCB Headers and Receptacles



Documents & Resources

Drawings

[Drawing 2125201002_sd.pdf](#)

[Packaging Design Drawing 2125200001-PK-000.pdf](#)

3D Models and Design Files

[3D Model 2125201002_stp.zip](#)

Specifications

[Application Specification 1722990000-AS-000.pdf](#)

[Product Specification 2125150000-PS-000.pdf](#)

[Test Summary 2125150000-TS-000.pdf](#)

Product Environment Compliance

Compliance

| | |
|--------------------|---|
| GADSL/IMDS | Not Relevant |
| China RoHS | |
| EU ELV | Not Relevant |
| Low-Halogen Status | Low-Halogen per IEC 61249-2-21 |
| REACH SVHC | Not Contained per D(2024)4144-DC (27 June 2024) |
| EU RoHS | Compliant per EU 2015/863 |

[Multiple Part Product Compliance Statements](#)

- Eu RoHS
- REACH SVHC
- Low-Halogen

[Multiple Part Industry Compliance Documents](#)

- IPC 1752A Class C
- IPC 1752A Class D
- Molex Product Compliance Declaration
- IEC-62474
- chemSHERPA (xml)

EU RoHS Certificate of Compliance

Part Details

General

| | |
|----------------|--|
| Status | Active |
| Category | PCB Headers and Receptacles |
| Series | 212520 |
| Description | Mini-Fit Max Vertical Header, Dual Row, 2 Circuits, Tin (Sn) Plating, Black, Glow-Wire Capable |
| Application | Power, Wire-to-Board |
| Component Type | PCB Header |
| Product Family | Mini-Fit Family Power Connectors |
| Product Name | Mini-Fit Max |
| UPC | 193264595303 |

Electrical

| | |
|-------------------------------|------------------|
| Current - Maximum per Contact | 20.0A |
| Voltage - Maximum | 600V AC (RMS)/DC |

Physical

| | |
|--------------------------------|-------|
| Breakaway | No |
| Circuits (Loaded) | 2 |
| Circuits (maximum) | 2 |
| Color - Resin | Black |
| Durability (mating cycles max) | 30 |
| First Mate / Last Break | No |
| Glow-Wire Capable | Yes |
| Guide to Mating Part | No |
| Keying to Mating Part | Yes |
| Lock to Mating Part | Yes |

| | |
|-------------------------------|------------------------|
| Material - Metal | Copper Alloy |
| Material - Plating Mating | Tin |
| Material - Resin | Liquid Crystal Polymer |
| Net Weight | 1.420/g |
| Number of Rows | 2 |
| Orientation | Vertical |
| Packaging Type | Tray |
| PCB Locator | Yes |
| PCB Retention | Yes |
| PCB Thickness - Recommended | 1.60mm |
| Pitch - Mating Interface | 4.20mm |
| Pitch - Termination Interface | 4.20mm |
| Polarized to Mating Part | Yes |
| Polarized to PCB | Yes |
| Shrouded | Fully |
| Temperature Range - Operating | -40° to +105°C |
| Termination Interface Style | Through Hole |

Mates With / Use With

Mates with Part(s)

| Description | Part Number |
|---|---------------|
| Mini-Fit Max Dual Row Receptacle Housings | <u>212514</u> |