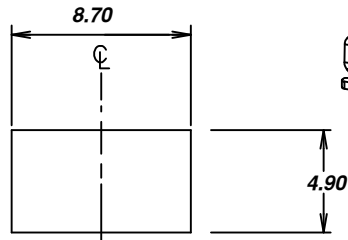
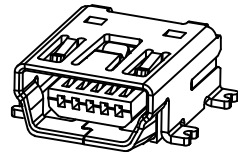


DO NOT SCALE
FORM THIS PRINT



SUGGESTED PANEL CUTOUT DIMENSIONS

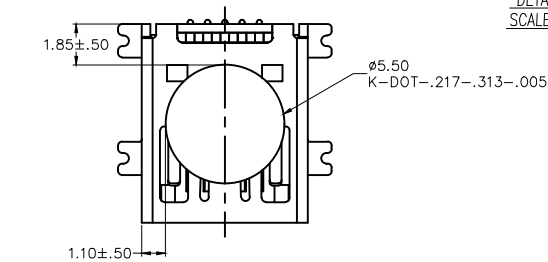
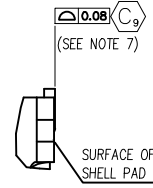
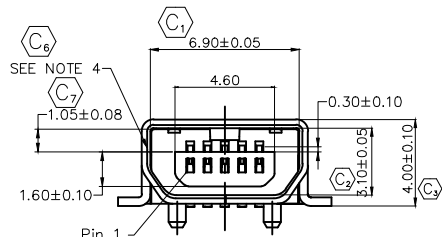
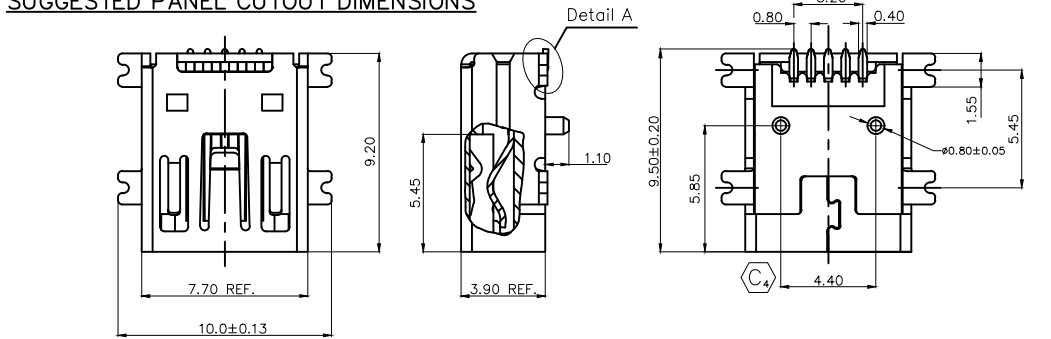


MUSB-05-X-AB-SM-A-X-X-XX

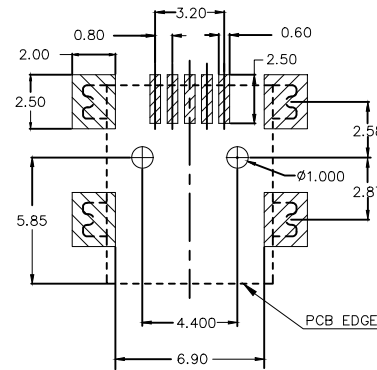
NO. OF CONTACTS
-05
PLATING
-F: 1 μ" FLASH GOLD ON CONTACT AREA,
BRIGHT ACID TIN ON TAIL

PACKAGING
BLANK: TRAYS (SEE NOTE 8)
-TR: TAPE & REEL PACKAGING (SEE NOTES 9 & 10)
-FR: FULL REEL QTY TAPE & REEL
(SEE NOTES 9 & 10)
PICK & PLACE OPTION
-K: KAPTON PAD
E & I OPTION
-R: RoHS COMPLIANT
ALIGNMENT PINS
RA TERMINATION
-SM: Surface Mount

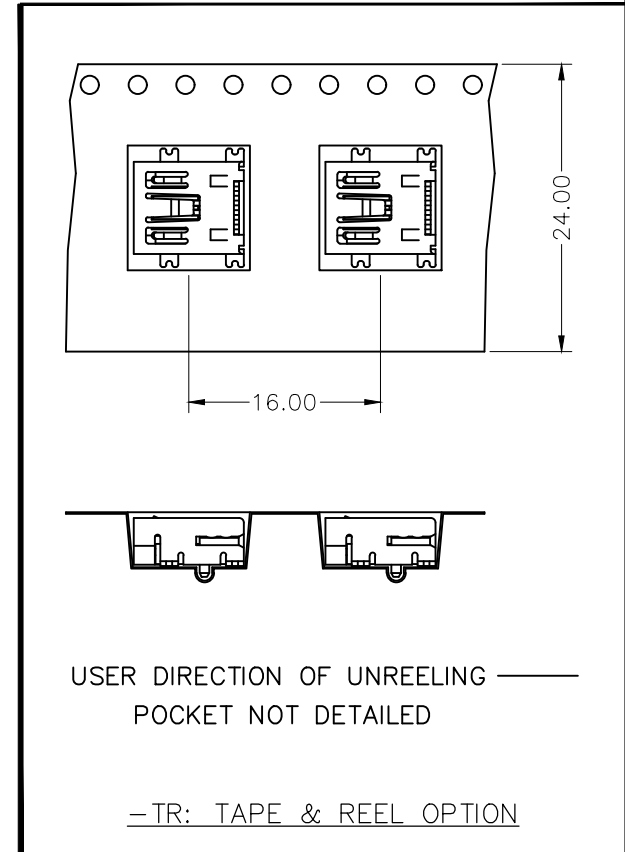
TYPE
-AB



KAPTON PAD PLACEMENT



RECOMMENDED PCB LAYOUT



NOTES:

1. C REPRESENTS CRITICAL DIMENSION.
2. NOTE DELETED.
3. NOTE DELETED.
4. CONFIRM THAT PARTS FACE MATCH THIS PRINT.
5. ALL PARTS ROHS COMPLIANT AS OF REVISION K.
6. NOTE DELETED.
7. COPLANARITY MEASUREMENT SHOULD INCLUDE ALL USB TAILS AND SHELL TABS.
8. TRAYS ARE STANDARD PACKAGING
6. ORDERS WILL BE PACKAGED ACCORDING TO THE SAMTEC PACKAGING EFFICIENCY STANDARDS (SPES) FOUND ON WWW.SAMTEC.COM.
6. ATTACH LABEL TO EACH REEL.

UNLESS OTHERWISE SPECIFIED, DIMENSIONS ARE IN MM. TOLERANCES ARE:

DECIMALS ANGLES
.X: ±.25 2°
.XX: ±.13
.XXX: ±.05

PROPRIETARY NOTE
THIS DOCUMENT CONTAINS INFORMATION CONFIDENTIAL AND PROPRIETARY TO SAMTEC INC. AND SHALL NOT BE REPRODUCED OR TRANSFERRED TO OTHER DOCUMENTS OR DISCLOSED TO OTHERS OR USED FOR ANY PURPOSE OTHER THAN THAT FOR WHICH IT WAS OBTAINED WITHOUT THE EXPRESSED WRITTEN CONSENT OF SAMTEC INC.

DO NOT SCALE DRAWING
INSULATOR: PA6T, RATED UL 94V-0, BLACK
CONTACT: PHOS BRONZE
SHELL: Cu/Ni PLATED BRASS

MAX FLASH ALLOWED: .051
MAX GATE VESTIGE: .051
F:\DWG\EXISPROD\ASSEMBLY\10\USB

SHEET SCALE: 1:2

samtec

520 PARK EAST BLVD. NEW ALBANY, IN 47150
(812) 944-6733 P.O. BOX 1147 TWX: 810-540-4085

DESCRIPTION:
Mini USB, RA, 5 Pin, Type AB, Single, SMT

DWG. NO.
MUSB-05-X-AB-SM-A-X-XX

BY: J. RILEY 03/23/04 SHEET 1 OF 1

CODE: 55322