

2170805-1 ✓ ACTIVE

zQSFP+/QSFP28

TE Internal #: 2170805-1

QSFP28/56, Cage, Signal, Operating Temperature Range -40 – 85 °

C [-40 – 185 °F], Data Rate (Max) 28 Gb/s, 2 Ports, Port Matrix

Configuration 1 x 2

[View on TE.com >](#)



Connectors > Pluggable IO Connectors & Cages



Pluggable I/O Product Type: **Cage**

Sealable: **No**

Circuit Application: **Signal**

Operating Temperature Range: **-40 – 85 °C [-40 – 185 °F]**

Data Rate (Max): **28 Gb/s**

Features

Product Type Features

Cage Type	Ganged
Pluggable I/O Product Type	Cage
Sealable	No
Form Factor	QSFP28/56

Configuration Features

Number of Rear EONs per Port Column	1
Number of Ports	2
Port Matrix Configuration	1 x 2

Electrical Characteristics

Data Rate (Max)	28 Gb/s
-----------------	---------

Contact Features

PCB Contact Termination Area Plating Material	Tin
---	-----

Termination Features

Termination Post & Tail Length	2.05 mm[.081 in]
Termination Method to PCB	Through Hole - Press-Fit

Housing Features

Cage Material	Nickel Silver
---------------	---------------



Dimensions

PCB Thickness (Recommended)	1.57 mm[.062 in]
-----------------------------	------------------

Usage Conditions

Operating Temperature Range	-40 – 85 °C[-40 – 185 °F]
-----------------------------	---------------------------

Operation/Application

Pluggable I/O Applications	SFP+ Stacked Belly-to-Belly
Heat Sink Compatible	No
Circuit Application	Signal

Industry Standards

UL Flammability Rating	UL 94V-0
------------------------	----------

Packaging Features

Packaging Method	Box & Tray
------------------	------------

Other

Included Lightpipe	No
EMI Containment Feature Type	Internal/External EMI Springs

Product Compliance

[For compliance documentation, visit the product page on TE.com>](#)

EU RoHS Directive 2011/65/EU	Compliant
EU ELV Directive 2000/53/EC	Compliant
China RoHS 2 Directive MIIT Order No 32, 2016	No Restricted Materials Above Threshold
EU REACH Regulation (EC) No. 1907/2006	Current ECHA Candidate List: JUNE 2024 (241) Candidate List Declared Against: JUNE 2024 (241) Does not contain REACH SVHC
Halogen Content	Low Halogen - Br, Cl, F, I < 900 ppm per homogenous material. Also BFR/CFR/PVC Free
Solder Process Capability	Not reviewed for solder process capability

Product Compliance Disclaimer

This information is provided based on reasonable inquiry of our suppliers and represents our current actual knowledge based on the information they provided. This information is subject to change. The part numbers that TE has identified as EU RoHS compliant have a maximum concentration of 0.1% by weight in homogenous materials for lead, hexavalent chromium, mercury, PBB, PBDE, DBP, BBP, DEHP, DIBP, and 0.01% for cadmium, or qualify for an exemption to these limits as defined in the Annexes of Directive 2011/65/EU (RoHS2). Finished electrical and electronic equipment products



will be CE marked as required by Directive 2011/65/EU. Components may not be CE marked. Additionally, the part numbers that TE has identified as EU ELV compliant have a maximum concentration of 0.1% by weight in homogenous materials for lead, hexavalent chromium, and mercury, and 0.01% for cadmium, or qualify for an exemption to these limits as defined in the Annexes of Directive 2000/53/EC (ELV). Regarding the REACH Regulation, the information TE provides on SVHC in articles for this part number is based on the latest European Chemicals Agency (ECHA) 'Guidance on requirements for substances in articles' posted at this URL: <https://echa.europa.eu/guidance-documents/guidance-on-reach>

Compatible Parts



TE Part # CAT-C11-Z806726
QSFP28 to QSFP28 Cable Assembly:
30 AWG



TE Part # CAT-C11-N49
QSFP28-Two QSFP28 Cable
Assembly: 30 AWG



TE Part # CAT-C11-Z8
QSFP28 to QSFP28 Cable Assembly:
26 AWG



TE Part # CAT-C11-N490333
QSFP28-Four SFP+ Cable Assembly:
30 AWG



TE Part # CAT-C11-N490325
QSFP28-Four SFP+ Cable Assembly:
26 AWG



TE Part # CAT-Q17-N490325
QSFP56 to QSFP56 Cable Assembly:
30 AWG



TE Part # CAT-Q17-N49033
QSFP56-Two QSFP56 Cable
Assembly: 30 AWG



TE Part # CAT-Q17-N49011
QSFP56-Four SFP56 Cable Assembly:
30 AWG



TE Part # CAT-Q17-N490333
QSFP56-Four SFP56 Cable Assembly:
26 AWG



TE Part # 1888810-2
EMI/Dust Cover,XFP And QSFP



TE Part # 1551920-2
zQSFP+ connector assembly



TE Part # CAT-C11-Q17
QSFP56 to QSFP56 Cable Assembly:
26 AWG

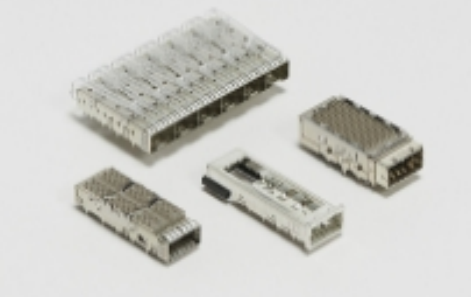
Also in the Series | zQSFP+/QSFP28



Heat Sinks(7)



Pluggable I/O Cable Assemblies(78)

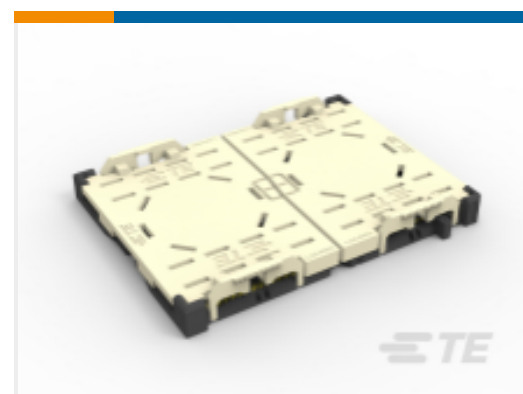


Pluggable IO Connectors & Cages(424)

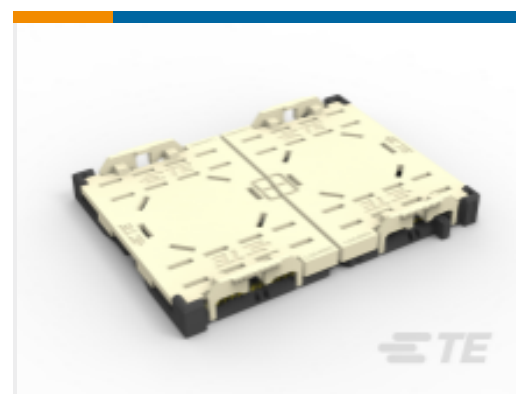
Customers Also Bought



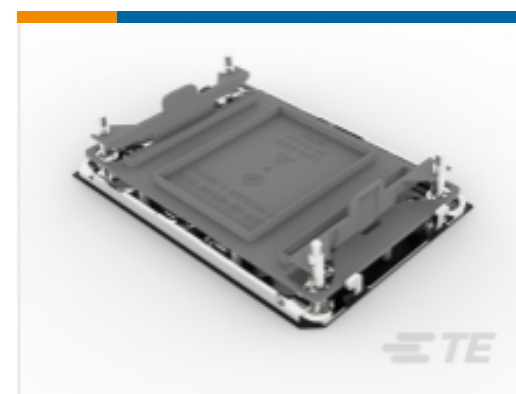
TE Part #5177986-3
0.8FH, P05H.5, 080, 08/Sn, TR, SC



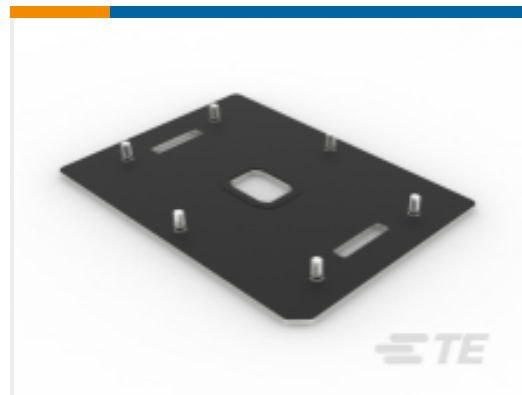
TE Part #1-2324271-3
RIGHT SEGMENT LGA4189-4
SOCKET P4 FOR ODM



TE Part #1-2324271-4
LEFT SEGMENT LGA4189-4 SOCKET-
P4 FOR ODM



TE Part #2-2330550-2
SOCKET P4 BOLSTER PLATE ASSY,
W/ COVER



TE Part #2-2330551-1
SOCKET P4/P5 BACKPLATE ASSY,
STUD 6.02MM



TE Part #2-2330552-2
ICX POINT PHM CARRIER ASSY, P4



TE Part #2327677-3
RECEIPT ASSY, 140 POS, VERT, SLIVER
2.0



TE Part #1-2328461-1
280 POS., CONNECTOR ASSEMBLY,
SLIVER 2.0



TE Part #1-2351052-5
LGA4677 E1A CARRIER ASSY



TE Part #2450211-1
DDR5 NARROW 287P

Documents

Product Drawings

CAGE ASSEMBLY, 1X2, QSFP28, SPRING

English

CAD Files

3D PDF

3D

Customer View Model

[ENG_CVM_CVM_2170805-1_A.2d_dxf.zip](#)

English

Customer View Model

[ENG_CVM_CVM_2170805-1_A.3d_igs.zip](#)

English

Customer View Model

[ENG_CVM_CVM_2170805-1_A.3d_stp.zip](#)

English

By downloading the CAD file I accept and agree to the [Terms and Conditions](#) of use.

Datasheets & Catalog Pages



QSFP28/56 and zQSFP+ Interconnects

English

Product Specifications

Application Specification

English