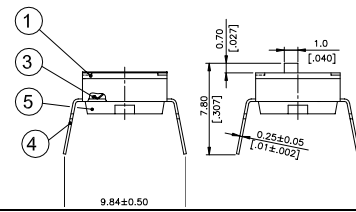
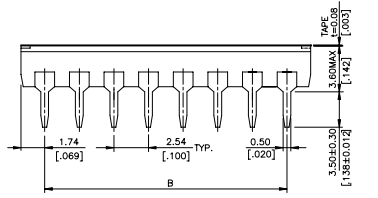
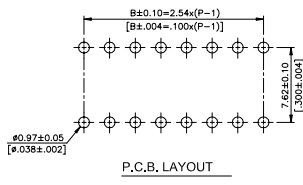
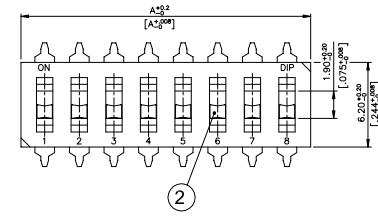


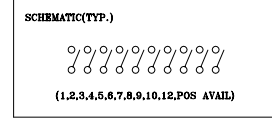
NDI(R),DM(R)&DJ(R) SERIES

DIMENSIONS

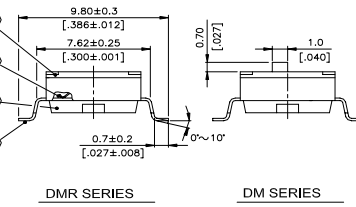
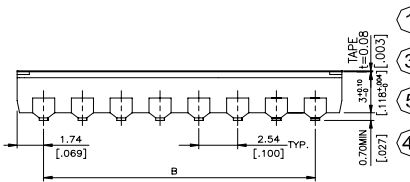
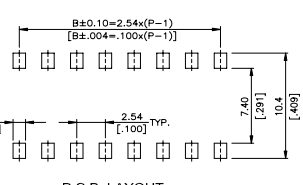
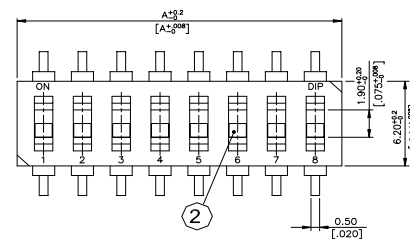
NDI(R)



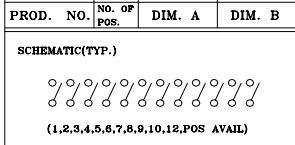
PROD. NO.	NO. OF POS.	DIM. A	DIM. B
NDI-12(P)	12	31.42[1.237]	27.94[1.100]
NDI-10(P)	10	26.34[1.037]	22.86[.900]
NDI-09(P)	9	23.80[.937]	20.32[.800]
NDI-08(P)	8	21.28[.837]	17.78[.700]
NDI-07(P)	7	18.72[.737]	15.24[.600]
NDI-06(P)	6	16.18[.637]	12.70[.500]
NDI-05(P)	5	13.64[.537]	10.16[.400]
NDI-04(P)	4	11.10[.437]	7.62[.300]
NDI-03(P)	3	8.56[.337]	5.08[.200]
NDI-02(P)	2	6.02[.237]	2.54[.100]
NDI-01(P)	1	3.48[.137]	-



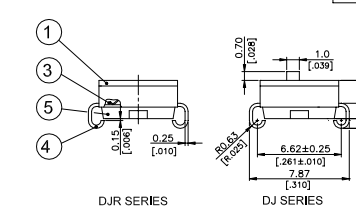
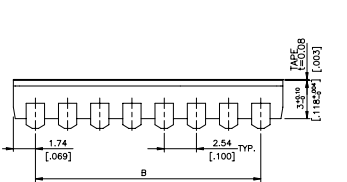
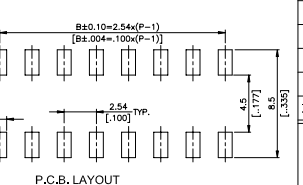
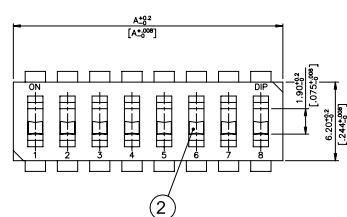
DM(R)



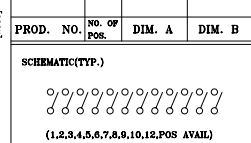
PROD. NO.	NO. OF POS.	DIM. A	DIM. B
DM-12(A) (P)	12	31.42[1.237]	27.94[1.100]
DM-10(A) (P)	10	26.34[1.037]	22.86[.900]
DM-09(A) (P)	9	23.80[.937]	20.32[.800]
DM-08(A) (P)	8	21.28[.837]	17.78[.700]
DM-07(A) (P)	7	18.72[.737]	15.24[.600]
DM-06(A) (P)	6	16.18[.637]	12.70[.500]
DM-05(A) (P)	5	13.64[.537]	10.16[.400]
DM-04(A) (P)	4	11.10[.437]	7.62[.300]
DM-03(A) (P)	3	8.56[.337]	5.08[.200]
DM-02(A) (P)	2	6.02[.237]	2.54[.100]



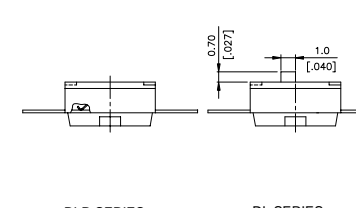
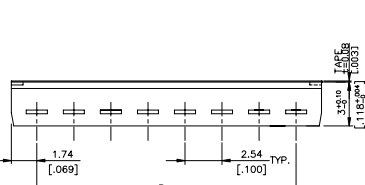
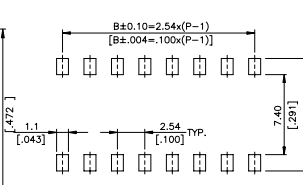
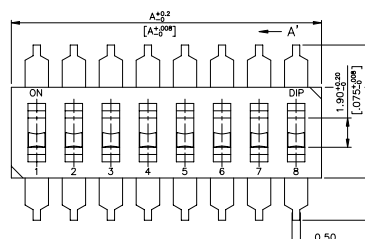
DJ(R)



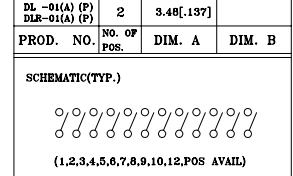
PROD. NO.	NO. OF POS.	DIM. A	DIM. B
DJ-12	12	31.42[1.237]	27.94[1.100]
DJ-10	10	26.34[1.037]	22.86[.900]
DJ-09	9	23.80[.937]	20.32[.800]
DJ-08	8	21.28[.837]	17.78[.700]
DJ-07	7	18.72[.737]	15.24[.600]
DJ-06	6	16.18[.637]	12.70[.500]
DJ-05	5	13.64[.537]	10.16[.400]
DJ-04	4	11.10[.437]	7.62[.300]
DJ-03	3	8.56[.337]	5.08[.200]
DJ-02	2	6.02[.237]	2.54[.100]



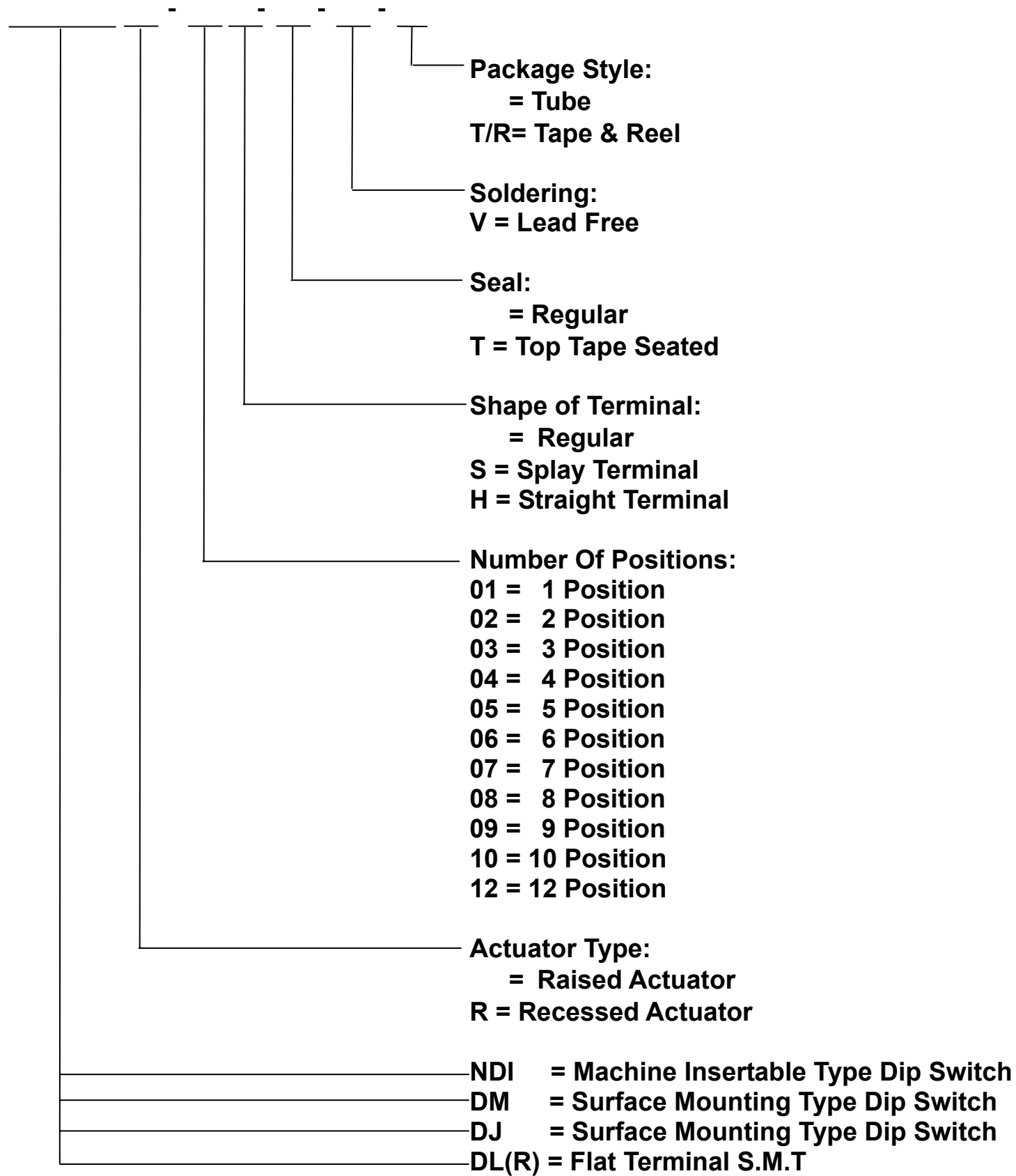
DL(R)



PROD. NO.	NO. OF POS.	DIM. A	DIM. B
DL-12(A) (P)	12	31.42[1.237]	27.94[1.100]
DL-10(A) (P)	10	26.34[1.037]	22.86[.900]
DL-09(A) (P)	9	23.80[.937]	20.32[.800]
DL-08(A) (P)	8	21.28[.837]	17.78[.700]
DL-07(A) (P)	7	18.72[.737]	15.24[.600]
DL-06(A) (P)	6	16.18[.637]	12.70[.500]
DL-05(A) (P)	5	13.64[.537]	10.16[.400]
DL-04(A) (P)	4	11.10[.437]	7.62[.300]
DL-03(A) (P)	3	8.56[.337]	5.08[.200]
DL-02(A) (P)	2	6.02[.237]	2.54[.100]
DL-01(A) (P)	2	3.48[.137]	-



HOW TO ORDER



SPECIFICATION

MECHANICAL

Mechanical Life: 2,000 cycles
Operation Force: 1,000gf max.
Stroke: 1.0 mm
Operation Temp: -20 to +85
Storage Temperature: -40 to +85

ELECTRICAL

Electrical Life: 2,000 cycles
Non-switching Rating: 100mA, 50VDC
Switching Rating: 25mA, 24VDC
Contact resistance: (a) 50mΩ max. at initial
(b) 100mΩ max. after life test
Insulation Resistance: 100MΩ min. 500VDC
Dielectric Strength: 500VAC/ minute
Capacitance: 5pF max.
Circuit: SPST

MATERIALS

BASE & COVER: UL94V-0 PPS High-Temp.
Thermoplastic, Color: Black
ACTUATOR: UL94V-0 Nylon Thermoplastic
Color: White
CONTACT: Alloy Copper
TERMINAL: Brass
CONTACT PLATING: Gold plated over nickel.
TERMINAL PLATING: Gold plated
TAPE PLATING: KAPTON

