

MATERIAL:

CONNECTOR - SMT

PLASTIC HOUSING:

LCP, FLAMMABILITY RATING UL94-V0

CONTACT:

PHOSPHOR BRONZE

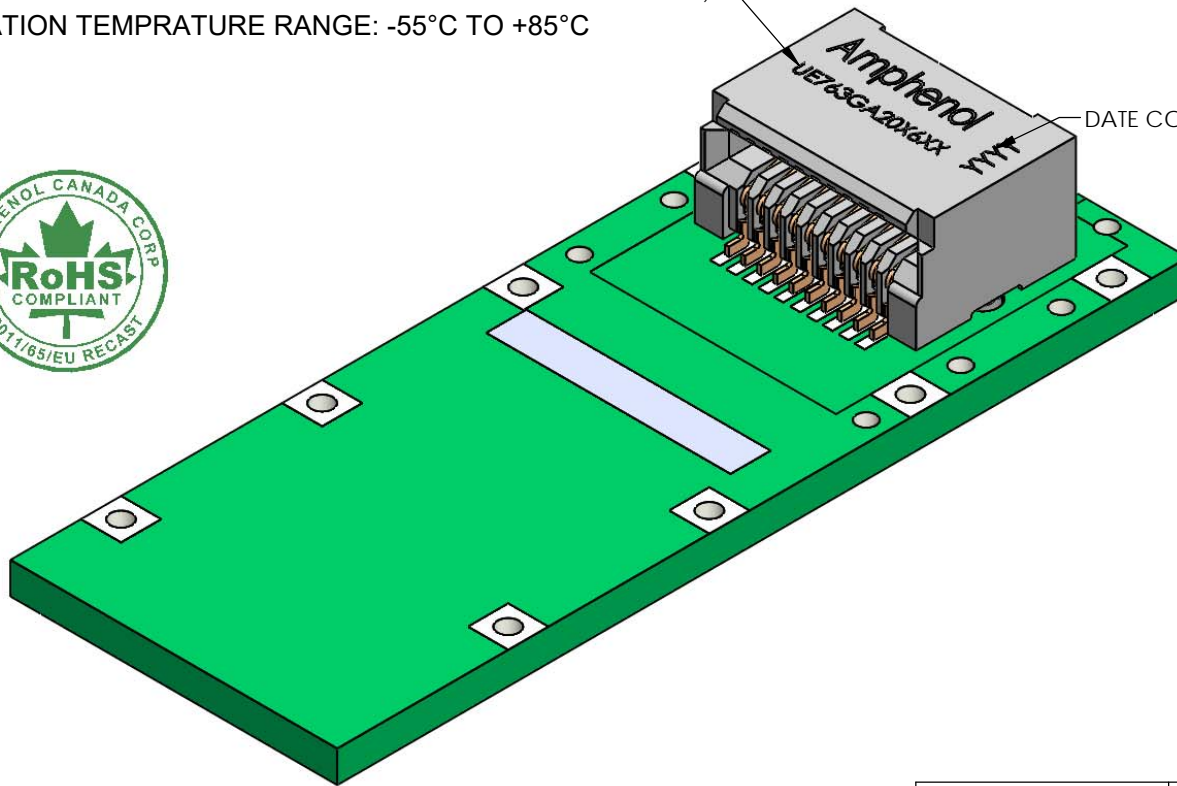
PLATING: SEE AMPHENOL PART NUMBER

PACKAGING: TAPE AND REEL (500 PER)

OPERATION TEMPRATURE RANGE: -55°C TO +85°C

PART NUMBER
(DOES NOT INCLUDING
PACKAGING TYPE)

DATE CODE



REVISIONS

REV.	ECN	DESCRIPTION	DATE	APPROVED
F		ADD PCB OPTION FOR EXTREMEPORT SFP	JUL 20/18	J.SI
G		UPDATE OPERATION TEMPERATURE RANGE	MAR 04/19	J.SI
H		UPDATE DRAWING	DEC 27/19	J.SI
J		UPDATE INK MARK P/N	JUL 22/21	J.SI

AMPHENOL PART NUMBER CONFIGURATION

UE76 - 3GA20 - X 6 0 0 T

PACKAGING

T = TAPE AND REEL PACKAGING

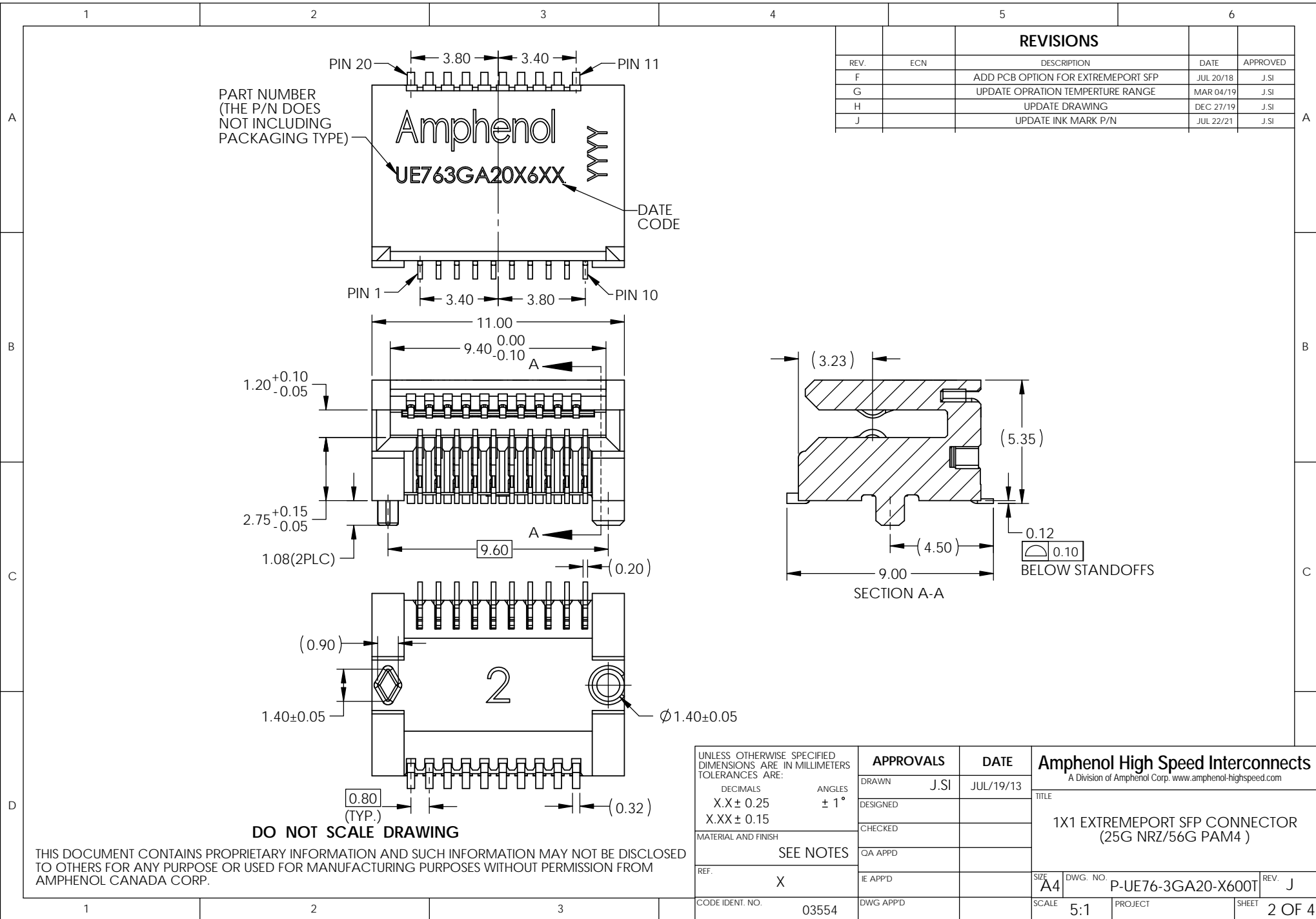
PLATING

- 2 = 0.76um GOLD AT MATING AREA
GOLD FLASH IN TERMINATION
NICKEL UNDER PLATED OVER ALL.
- 3 = 0.76um GOLD AT MATING AREA
3.0-7.62um MATTE TIN IN TERMINATION
NICKEL UNDER PLATED OVER ALL.
- 5 = 0.38um GOLD AT MATING AREA
GOLD FLASH IN TERMINATION
NICKEL UNDER PLATED OVER ALL.
- 6 = 0.38um GOLD AT MATING AREA
3.0-7.62um MATTE TIN IN TERMINATION
NICKEL UNDER PLATED OVER ALL.

DO NOT SCALE DRAWING

THIS DOCUMENT CONTAINS PROPRIETARY INFORMATION AND SUCH INFORMATION MAY NOT BE DISCLOSED TO OTHERS FOR ANY PURPOSE OR USED FOR MANUFACTURING PURPOSES WITHOUT PERMISSION FROM AMPHENOL CANADA CORP.

UNLESS OTHERWISE SPECIFIED DIMENSIONS ARE IN MILLIMETERS TOLERANCES ARE:		APPROVALS		DATE	Amphenol High Speed Interconnects A Division of Amphenol Corp. www.amphenol-highspeed.com	
DECIMALS	ANGLES	DRAWN	J.SI	JUL/19/13	TITLE 1X1 EXTREMEPORT SFP CONNECTOR (25G NRZ/56G PAM4)	
X.X ± 0.25	± 1°	DESIGNED				
X.XX ± 0.15		CHECKED				
MATERIAL AND FINISH SEE NOTES		QA APPD				
REF.	X	IE APPD			SIZE A4	DWG. NO. P-UE76-3GA20-X600T
CODE IDENT. NO.	03554	DWG APPD			SCALE 4:1	PROJECT
					SHEET	1 OF 4



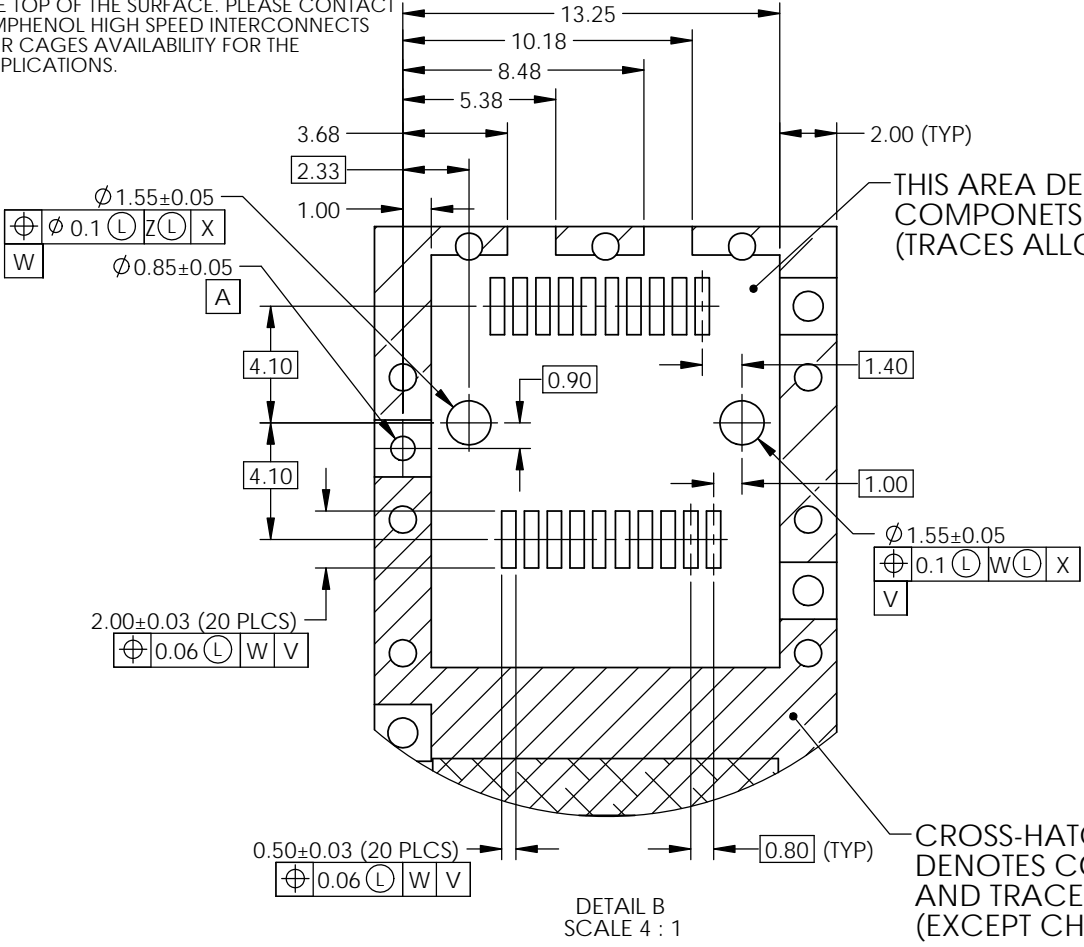
REVISIONS				
REV.	ECN	DESCRIPTION	DATE	APPROVED
F		ADD PCB OPTION FOR EXTREMEPORT SFP	JUL 20/18	J.SI
G		UPDATE OPERATION TEMPERATURE RANGE	MAR 04/19	J.SI
H		UPDATE DRAWING	DEC 27/19	J.SI
J		UPDATE INK MARK P/N	JUL 22/21	J.SI

UNLESS OTHERWISE SPECIFIED DIMENSIONS ARE IN MILLIMETERS TOLERANCES ARE:		APPROVALS	DATE	Amphenol High Speed Interconnects A Division of Amphenol Corp. www.amphenol-highspeed.com	
DECIMALS	ANGLES				
X.X ± 0.25	± 1°	DRAWN	J.SI	JUL/19/13	TITLE
X.XX ± 0.15		DESIGNED			1X1 EXTREMEPORT SFP CONNECTOR (25G NRZ/56G PAM4)
MATERIAL AND FINISH		CHECKED			
SEE NOTES		QA APPD			
REF.	X	IE APPD			SIZE A4
CODE IDENT. NO.	03554	DWG APPD			DWG. NO. P-UE76-3GA20-X600T
					SCALE 5:1
					PROJECT
					SHEET 2 OF 4

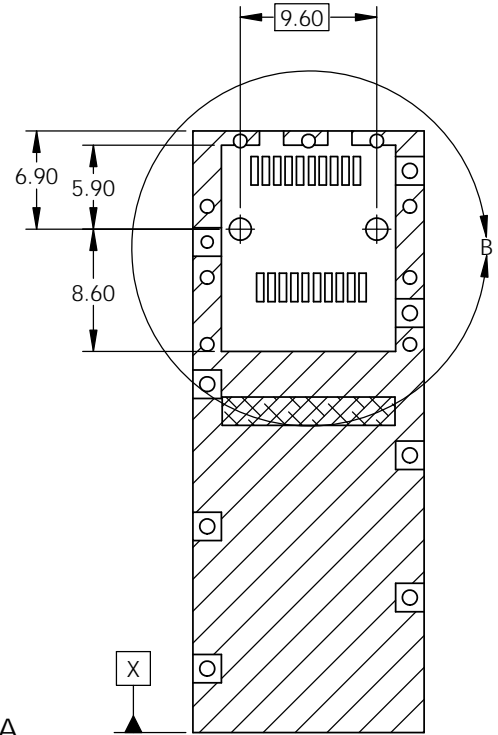
THIS DOCUMENT CONTAINS PROPRIETARY INFORMATION AND SUCH INFORMATION MAY NOT BE DISCLOSED TO OTHERS FOR ANY PURPOSE OR USED FOR MANUFACTURING PURPOSES WITHOUT PERMISSION FROM AMPHENOL CANADA CORP.

DO NOT SCALE DRAWING

NOTE:
SOME OF ULTRAPORT CAGES PCB LAYOUT NOT ALLOWED HAVING SIGNAL TRACES ON THE TOP OF THE SURFACE. PLEASE CONTACT AMPHENOL HIGH SPEED INTERCONNECTS FOR CAGES AVAILABILITY FOR THE APPLICATIONS.



REVISIONS				
REV.	ECN	DESCRIPTION	DATE	APPROVED
F		ADD PCB OPTION FOR EXTREMEPORT SFP	JUL 20/18	J.SI
G		UPDATE OPERATION TEMPERATURE RANGE	MAR 04/19	J.SI
H		UPDATE DRAWING	DEC 27/19	J.SI
J		UPDATE INK MARK P/N	JUL 22/21	J.SI



DETAIL B
SCALE 4 : 1

CROSS-HATCHED AREA DENOTES COMPONENT AND TRACE KEEP-OUT (EXCEPT CHASSIS GROUND)

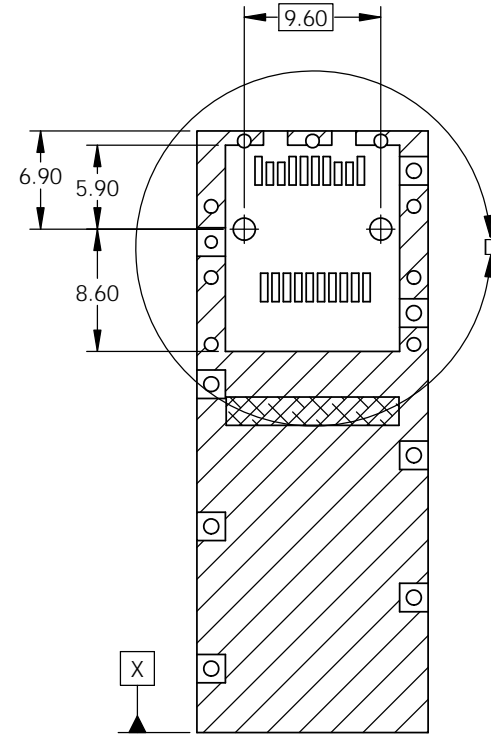
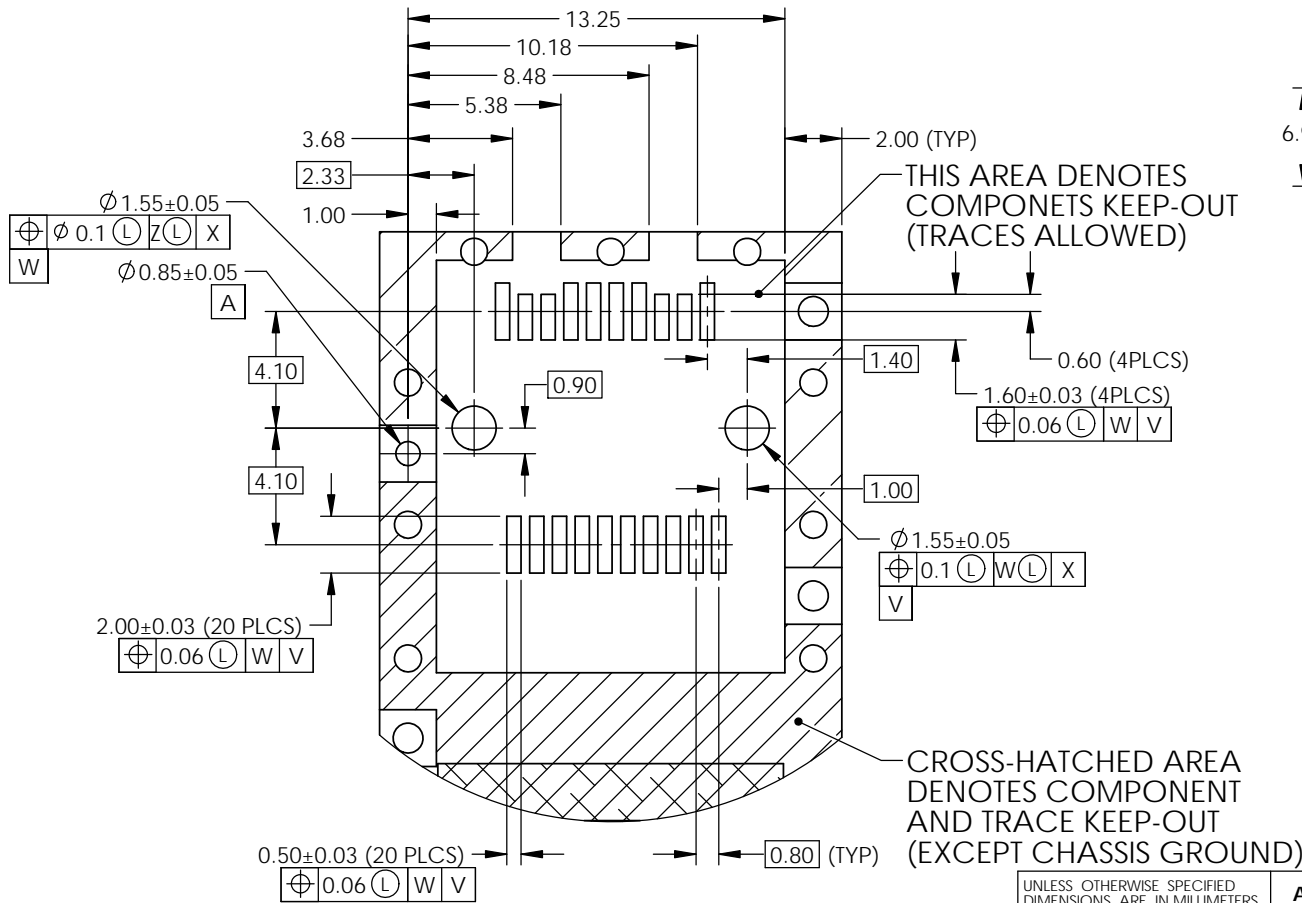
DO NOT SCALE DRAWING

THIS DOCUMENT CONTAINS PROPRIETARY INFORMATION AND SUCH INFORMATION MAY NOT BE DISCLOSED TO OTHERS FOR ANY PURPOSE OR USED FOR MANUFACTURING PURPOSES WITHOUT PERMISSION FROM AMPHENOL CANADA CORP.

UNLESS OTHERWISE SPECIFIED DIMENSIONS ARE IN MILLIMETERS TOLERANCES ARE: DECIMALS ANGLES X.X ± 0.25 ± 1° X.XX ± 0.15	APPROVALS	DATE	Amphenol High Speed Interconnects A Division of Amphenol Corp. www.amphenol-highspeed.com
	DRAWN J.SI	JUL/19/13	
	DESIGNED		
	CHECKED		
MATERIAL AND FINISH	SEE NOTES	QA APPD	TITLE
REF. X	IE APPD		1X1 EXTREMEPORT SFP CONNECTOR (25G NRZ/56G PAM4)
CODE IDENT. NO. 03554	DWG APPD		SIZE A4 DWG. NO. P-UE76-3GA20-X600T REV. J
		SCALE 2:1	PROJECT SHEET 3 OF 4

NOTE:
 1. SOME OF ULTRAPORT CAGES PCB LAYOUT NOT ALLOWED HAVING SIGNAL TRACES ON THE TOP OF THE SURFACE. PLEASE CONTACT AMPHENOL HIGH SPEED INTERCONNECTS FOR CAGES AVAILABILITY FOR THE APPLICATIONS.
 2. FOR SPECIAL CUSTOMER APPLICATION ONLY.
 3. THE SPECIAL FOOTPRINTS CAN APPLY TO AMPHENOL UE76-3GA20-X600T (X REPRESENTS VARIOUS PLATING OPTIONS)

REVISIONS				
REV.	ECN	DESCRIPTION	DATE	APPROVED
F		ADD PCB OPTION FOR EXTREMEPORT SFP	JUL 20/18	J.SI
G		UPDATE OPERATION TEMPERATURE RANGE	MAR 04/19	J.SI
H		UPDATE DRAWING	DEC 27/19	J.SI
J		UPDATE INK MARK P/N	JUL 22/21	J.SI



CROSS-HATCHED AREA DENOTES COMPONENT AND TRACE KEEP-OUT (EXCEPT CHASSIS GROUND)

DETAIL D
SCALE 4 : 1

DO NOT SCALE DRAWING

THIS DOCUMENT CONTAINS PROPRIETARY INFORMATION AND SUCH INFORMATION MAY NOT BE DISCLOSED TO OTHERS FOR ANY PURPOSE OR USED FOR MANUFACTURING PURPOSES WITHOUT PERMISSION FROM AMPHENOL CANADA CORP.

UNLESS OTHERWISE SPECIFIED DIMENSIONS ARE IN MILLIMETERS TOLERANCES ARE:		APPROVALS		DATE	Amphenol High Speed Interconnects A Division of Amphenol Corp. www.amphenol-highspeed.com TITLE 1X1 EXTREMEPORT SFP CONNECTOR (25G NRZ/56G PAM4)
DECIMALS	ANGLES	DRAWN	J.SI	JUL/19/13	
X.X ± 0.25	± 1°	DESIGNED			
X.XX ± 0.15		CHECKED			
MATERIAL AND FINISH		QA APP'D			
SEE NOTES		IE APP'D			SIZE A4
REF.	X	DWG APP'D			DWG. NO. P-UE76-3GA20-X600T
CODE IDENT. NO.	03554	DWG APP'D			SCALE 2:1
					PROJECT
					SHEET 4 OF 4