

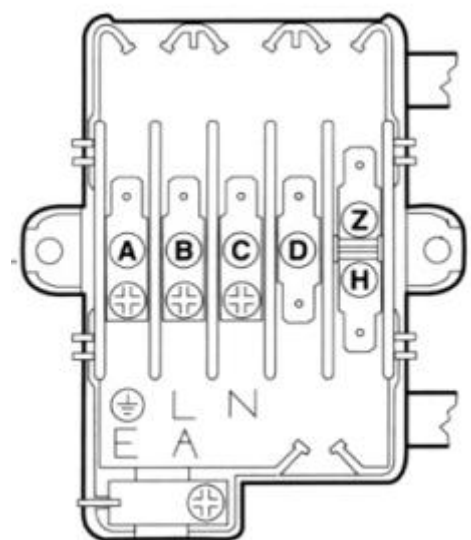
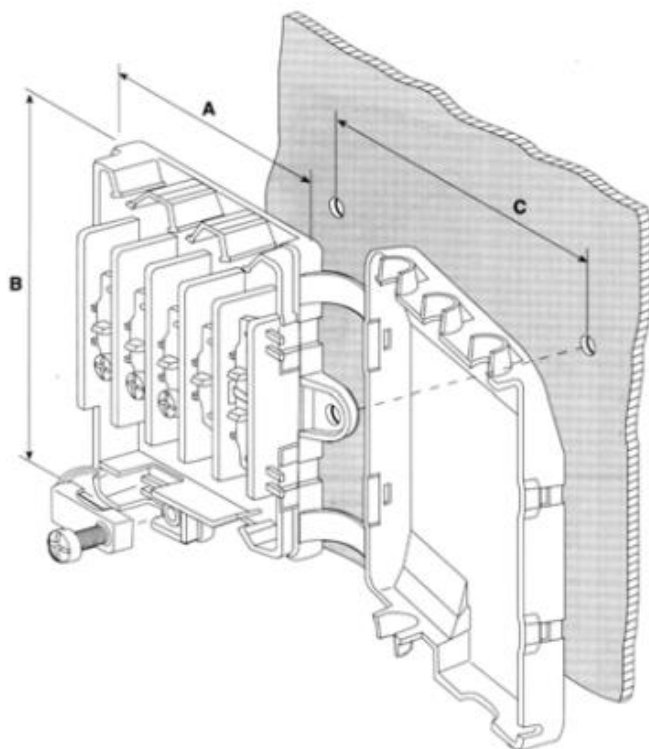
## Datasheet

# Non-Fused Terminal Block, 6 Way, Screw Down, Nylon, 450 V



RS Stock 234-4841



Dimensions: (mm)



	IEC Standards			American Standards		
	A	B	C	D	E	F
<b>Dimension</b> mm (inches)	66 (2.60)	107 (4.21)	79.6 (3.13)	21.5 (0.85)	23.5 (0.93)	∅ 5.5 (0.22)
<b>Versions</b>	6 poles					
<b>Ratings</b>	450V - 16A			300V - 20A		
<b>Wire size</b>	1.5 sqmm			22 ÷ 12AWG		
<b>Working Temperature</b>	- 5 ÷ 85°C (short time 115°C)			23 ÷ 221°F		
<b>Plastic Material</b>	Polyamide PA6 white colour, UL94 V2, GWT 850°C					
<b>Metal Parts</b>	M4 zinc plated steel screw; 6.3 x 0.8 zinc plated steel tab insert; other parts made in zinc plated steel					
<b>Protection degree (IP)</b>	IP30					
<b>Cable section</b>	3 x 0.75 sqmm ÷ 3 x 1.5 sqmm					
<b>Cable Clamp Screw</b>	3.5 x 12 mm (0.14" x 0.47") HI-LO					

Approvals	File Nr.	Ratings (sqmm/AWG – V – A – T)	Standard References
	CA 02.00592	1.5 sqmm - 450V – 85°C (100°C with cover)	EN 60998-1; EN 60998-2-1; EN 61210; EN60335-1
	121359	1.5 sqmm - 450V – 16A - 85°C	DIN EN 60335-1, /A12, /A13, /A14; DIN EN 60998-1; DIN EN 60998-2-1; DIN EN 61210 (VDE 0613)