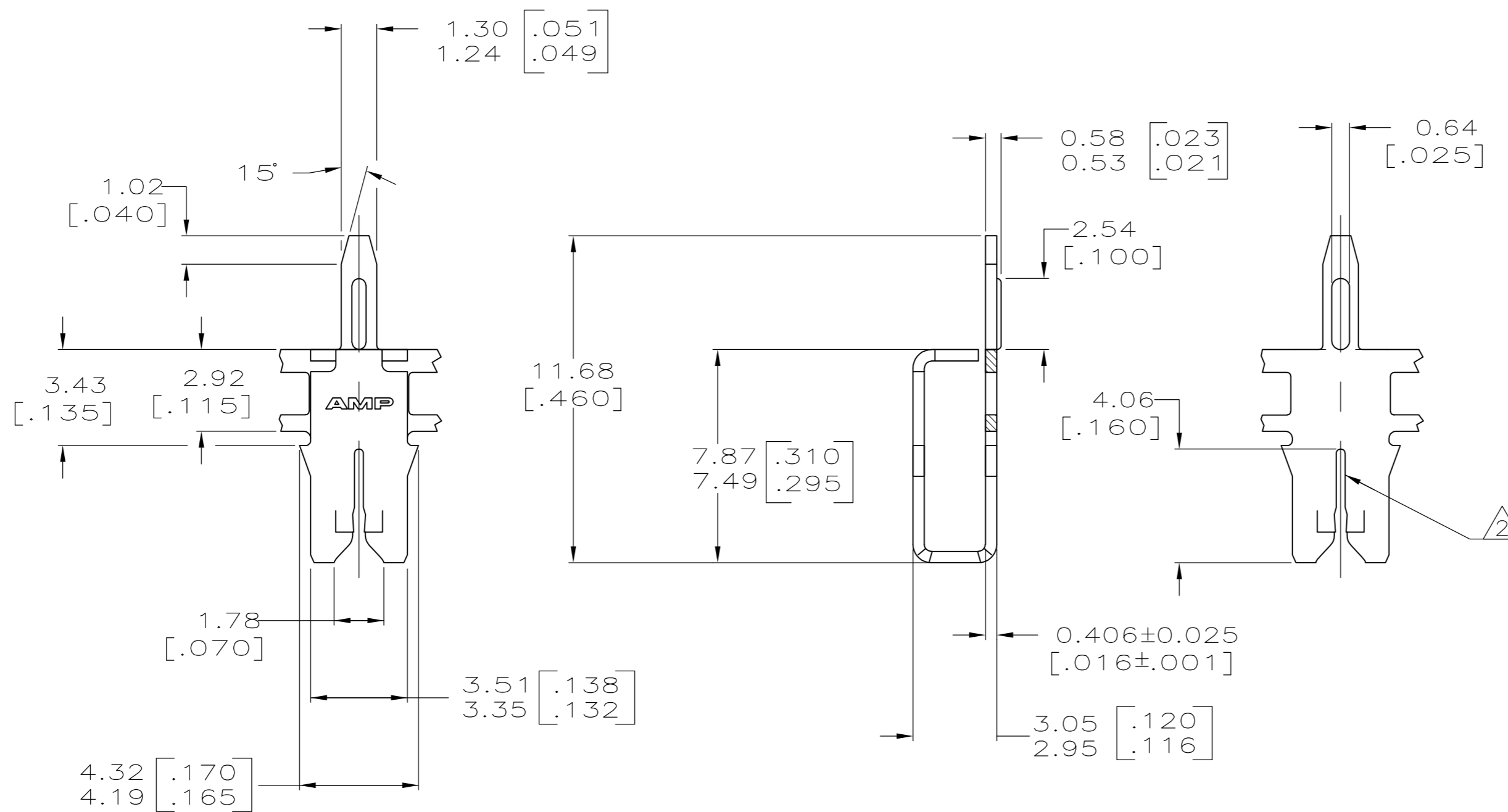
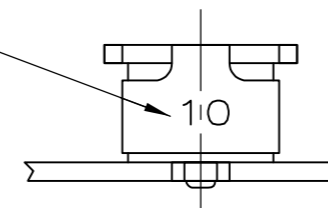


THIS DRAWING IS UNPUBLISHED. RELEASED FOR PUBLICATION
 © COPYRIGHT - By TE Connectivity ALL RIGHTS RESERVED.

REVISIONS				
P	LTR	DESCRIPTION	DATE	APVD
D3		DRAWING CLARIFICATION	19JUL2017	SV PKS

- 1 CONTINUOUS STRIP ON REELS WITH TERMINALS LOCATED ON 5.59 [.220] CENTERS.
- 2 SLOT TERMINATES EITHER A SINGLE OR DOUBLE MAGNET WIRES OF THE SAME TYPE AND SIZE, COPPER RANGE: 0.36-0.57mm [#27-#23] AWG, ALUMINUM RANGE: 0.51-0.64mm [#24-#22] AWG.
- 3 0.00254 [.000100] MIN TIN OVER 0.00127 [.000050] MIN NICKEL UNDERPLATE

IDENTIFICATION NUMBER 10 FOR MAGNET WIRE RANGE



63659-1
PART NUMBER

THIS DRAWING IS A CONTROLLED DOCUMENT.		DWN MICHAEL S. FEHER 8/14/92	TE TE Connectivity	
DIMENSIONS: MM [INCHES]		CHK PHILLIP M. FORTNEY 8/18/92		
TOLERANCES UNLESS OTHERWISE SPECIFIED:		APVD -	NAME POST, SOLDER, MAG-MATE	
0 PLC ± -		PRODUCT SPEC 108-2012	SIZE A2	CAGE CODE 00779
1 PLC ± -		APPLICATION SPEC 114-2046	DRAWING NO C=63659	RESTRICTED TO -
2 PLC ± 0.25 [.010]		WEIGHT 0.000000	SCALE 6:1	SHEET 1 OF 1
3 PLC ± -		CUSTOMER DRAWING	REV D3	
4 PLC ± -				
ANGLES ± 1°				
MATERIAL 4M BRASS	FINISH 3			