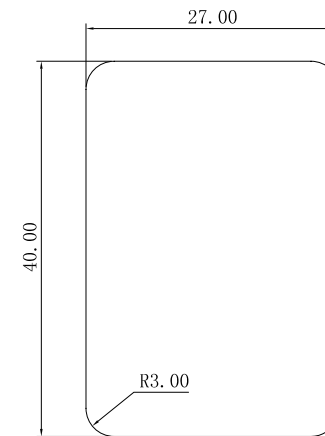
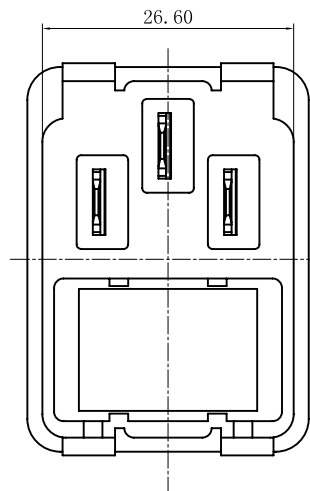
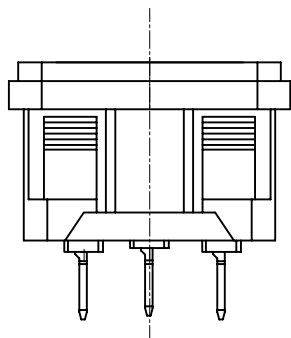


Section A-A



PANEL CUT-OUT



Rating :

15A 250V AC T105 UL cUL
10A 250V AC VDE 3C KC

Fuse : 250VAC 6.3A 2.5W

Insert And Extract Force: 1.36kgf~6.8kgf

Terminal Strength: ≥80N

Operating Life: ≥5000 cycles

Withstand Voltage: Between all terminals: 2500VAC (50-60Hz) 1min

terminals to Base: 3750V AC (50-60Hz) 1min

Leakage Current : 1mA

Insulation Resistance: ≥100MΩ 500V DC

Body Material: NYLON 66 94V-2-0

A4				普通公差	深圳市华灿天禄电子有限公司						
A3				COMMON TOLERANCE :							
A2				UP TO 5	±0.20	单位	mm	投影	Ac Inlet C14型	比例	Free
A1				ABOVE 5 TO 30	±0.30	UNIT		PROJECTED			
REV.	DATE	REVISION DESCRIPTION	ISSUE	ANGULAR	±5°	绘图	黄旭程	核对	品名	型号	DB-14
						DATE	2015.01.21	核准	料号	DB-14-2F+RS	
								APPROVAL BY	SCALE		
									PART NO.		