

## REGINA

~9° spot beam

### SPECIFICATION:

Dimensions	Ø 19.0 mm
Height	15.3 mm
Fastening	glue, pin
ROHS compliant	yes ⓘ

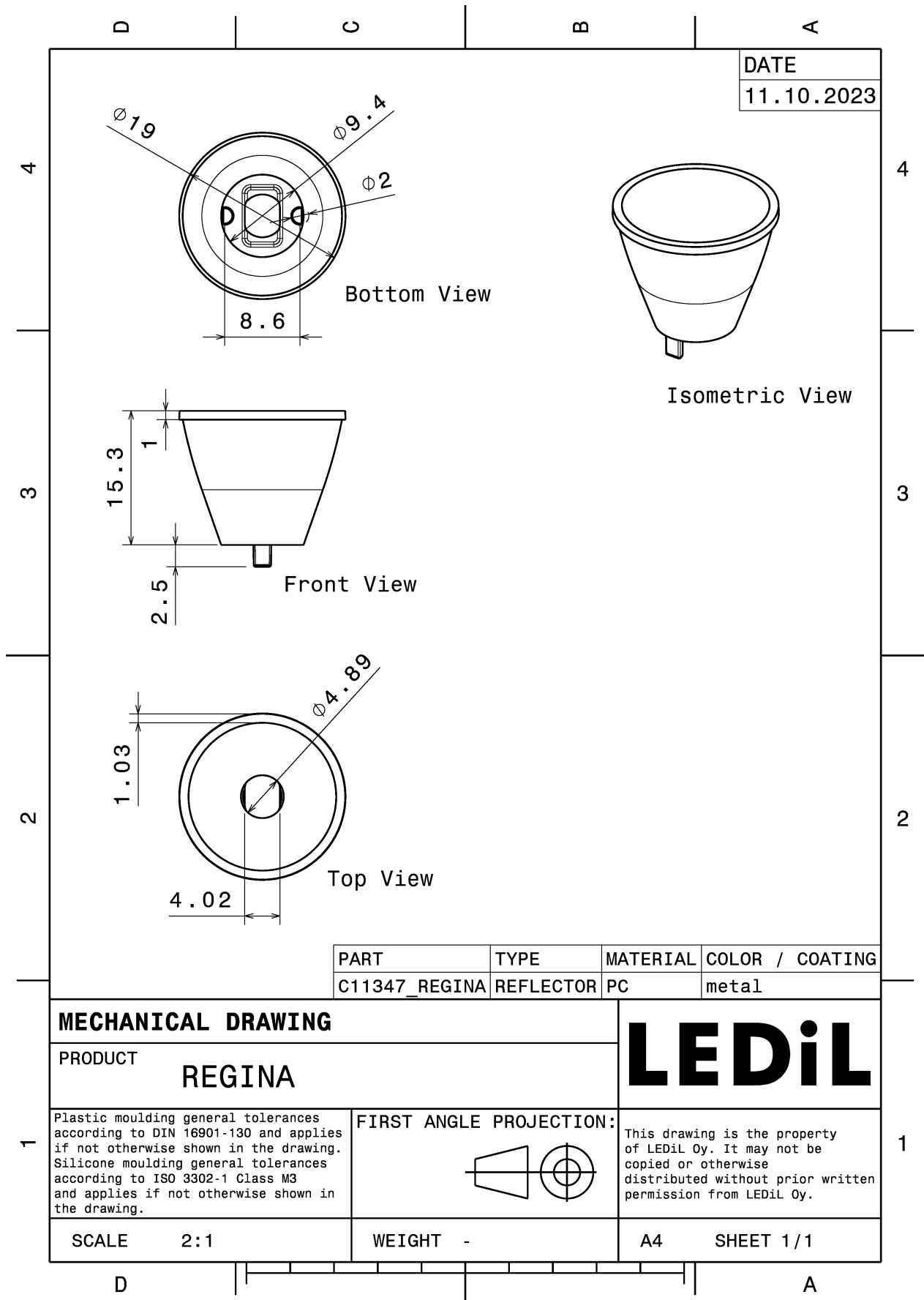
### MATERIALS:

Component	Type	Material	Colour	Finish	Coating
REGINA	Reflector	PC	metal		lacquer

### ORDERING INFORMATION:

Component	Qty in box	MOQ	MPQ	Box weight (kg)
C11347_REGINA » Box size: 480 x 280 x 300 mm	1680	336	112	3.2





See also our general installation guide: [www.ledil.com/installation\\_guide](http://www.ledil.com/installation_guide)

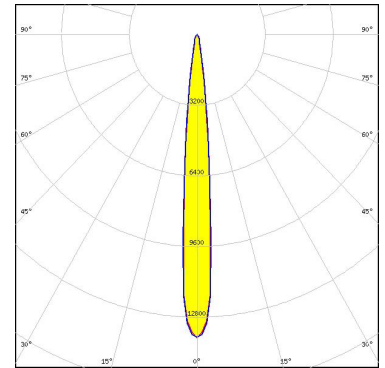
### OPTICAL RESULTS (MEASURED):



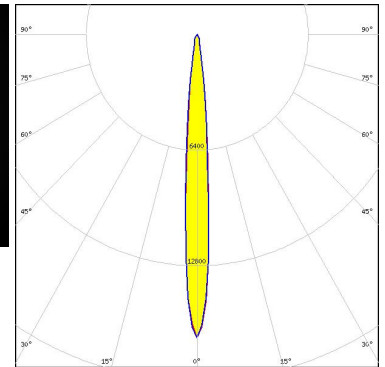
LED XP-E  
 FWHM / FWTM 8.0°  
 Efficiency 86 %  
 LEDs/each optic 1  
 Light colour White  
 Required components:



LED XP-G  
 FWHM / FWTM 10.0°  
 Efficiency 86 %  
 LEDs/each optic 1  
 Light colour White  
 Required components:



LED XP-L HI  
 FWHM / FWTM 8.2° / 22.0°  
 Efficiency 84 %  
 Peak intensity 16.9 cd/lm  
 LEDs/each optic 1  
 Light colour White  
 Required components:

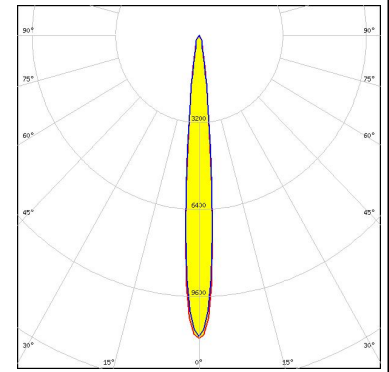


LED LUXEON Rebel  
 FWHM / FWTM 7.0°  
 Efficiency 89 %  
 LEDs/each optic 1  
 Light colour White  
 Required components:

### OPTICAL RESULTS (MEASURED):



LED LUXEON Rebel ES  
FWHM / FWTM 10.0° / 22.0°  
Efficiency 89 %  
LEDs/each optic 1  
Light colour White  
Required components:



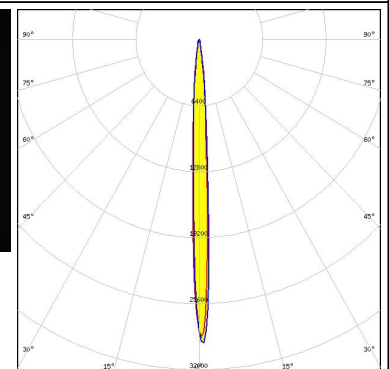
LED NCSxx19A  
FWHM / FWTM 10.0°  
Efficiency 84 %  
LEDs/each optic 1  
Light colour White  
Required components:




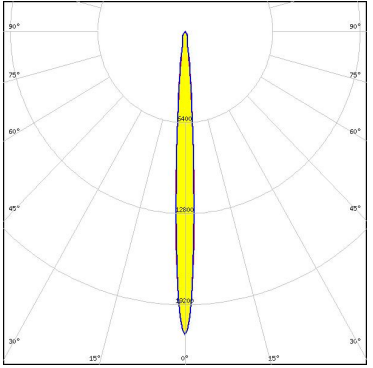
LED NVSxx19A  
FWHM / FWTM 10.0°  
Efficiency 84 %  
LEDs/each optic 1  
Light colour White  
Required components:



OSRAM  
Opto Semiconductors  
LED OSLON SSL 150  
FWHM / FWTM 6.0° / 16.0°  
Efficiency 84 %  
Peak intensity 24 cd/lm  
LEDs/each optic 1  
Light colour White  
Required components:



### OPTICAL RESULTS (MEASURED):

<b>OSRAM</b> Opto Semiconductors			
LED	OSLON SSL 80		
FWHM / FWTM	7.0° / 17.0°		
Efficiency	91 %		
Peak intensity	21.3 cd/lm		
LEDs/each optic	1		
Light colour	White		
Required components:			
<b>SEOLUX</b> SEOUL SEMICONDUCTOR			
LED	Z5		
FWHM / FWTM	11.0°		
Efficiency	%		
LEDs/each optic	1		
Light colour	White		
Required components:			

### OPTICAL RESULTS (SIMULATED):

<p><b>NICHIA</b></p> <p>LED NVSU119C FWHM / FWTM 11.0° / 26.0° Efficiency 86 % LEDs/each optic 1 Light colour UV-A Required components:</p>	
<p><b>OSRAM</b> Opto Semiconductors</p> <p>LED OSCONIQ C 2424 FWHM / FWTM 8.0° / 20.0° Efficiency 89 % Peak intensity 18.6 cd/lm LEDs/each optic 1 Light colour White Required components:</p>	

### GENERAL INFORMATION:

NOTE: The typical beam angle will be changed by different color, chip size and chip position tolerance. The typical total beam angle is the full angle measured where the luminous intensity is half of the peak value.

### MATERIALS:

As part of our continuous research and improvement processes, and to ensure the best possible quality and availability of our products, LEDiL reserves the right to change material grades without notice.

### PRODUCT DATA USER AGREEMENT AND DISCLAIMER:

The measured data in the provided downloadable LEDiL Product Datasheets and Mechanical 2D-Drawings is rounded and provided as reference for planning. LEDiL Oy's optical specifications have been verified by conducting performance testing of the products in accordance with the company's quality system. The reported data are averaged results of multiple measurements with typical variation. LEDiL Oy reserves the right to without prior notification make changes and improvements to its products.

LEDiL Oy assumes neither warranty, nor guarantee nor any other liability of any kind for the contents and correctness of the provided data. The provided data has been generated with highest diligence but the provided data may in reality not represent the complete possible variation range of all intrinsic parameters. Therefore, in certain cases a deviation from the provided data could occur.

LEDiL Oy reserves the right to undertake technical changes of its products without further notification which could lead to changes in the provided data. LEDiL Oy assumes no liability of any kind for the possible deviation from any provided data or any other damage resulting from the usage of the provided data.

The user agrees to this disclaimer and user agreement with the download or usage of the provided files.

#### LEDiL Oy

Joensuunkatu 13  
FI-24240 SALO  
Finland

#### LEDiL Inc.

228 West Page Street  
Suite D  
Sycamore IL 60178  
USA

#### Ledil Optics Technology (Shenzhen) Co., Ltd.

# 405 , Block B  
Casic Motor Building  
Shenzhen 518057  
P.R.CHINA

#### Local sales and technical support

[www.ledil.com/  
where\\_to\\_buy](http://www.ledil.com/where_to_buy)

#### Shipping locations

Salo, Finland  
Hong Kong, China

#### Distribution Partners

[www.ledil.com/  
where\\_to\\_buy](http://www.ledil.com/where_to_buy)