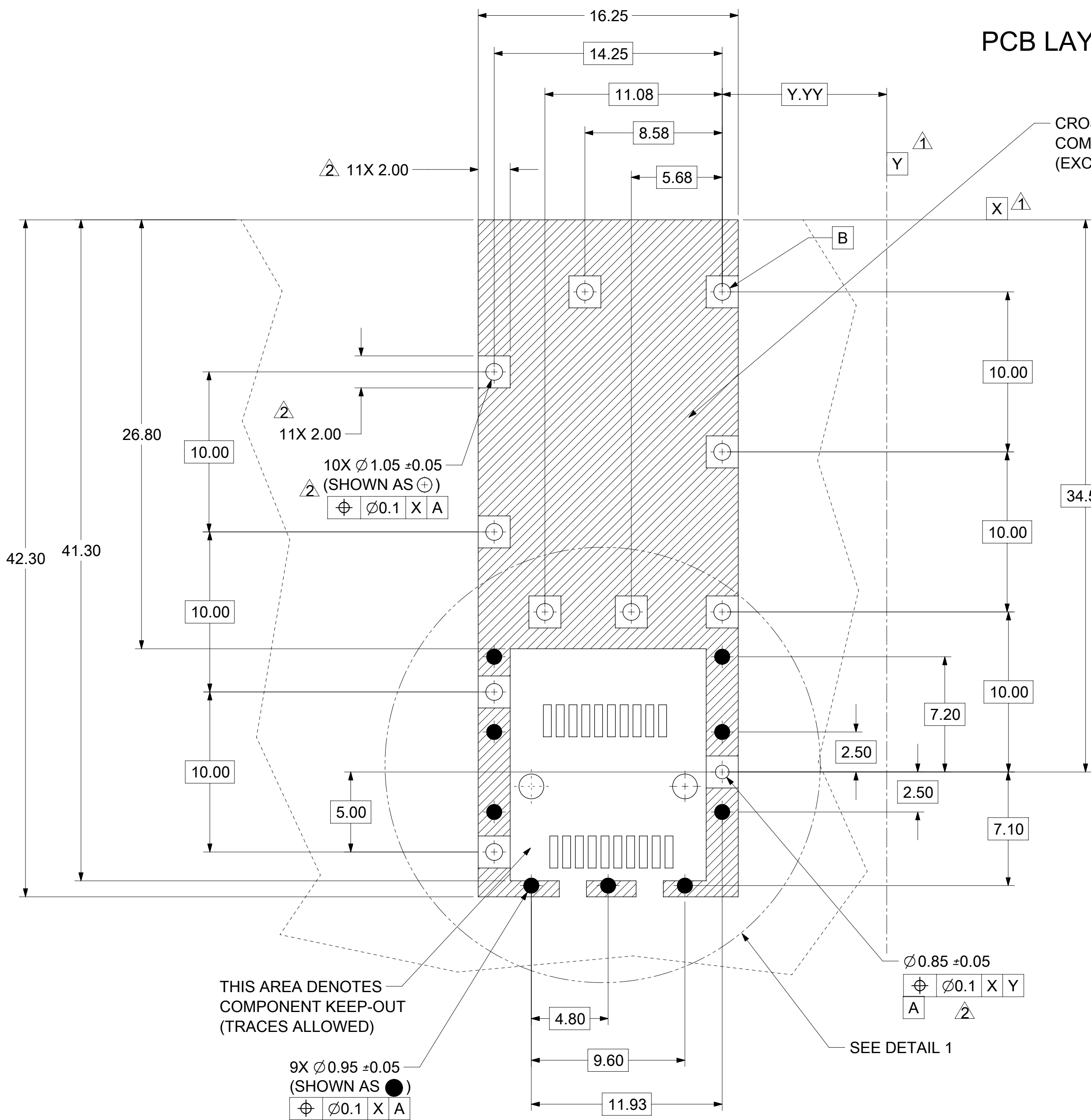


NOTES:

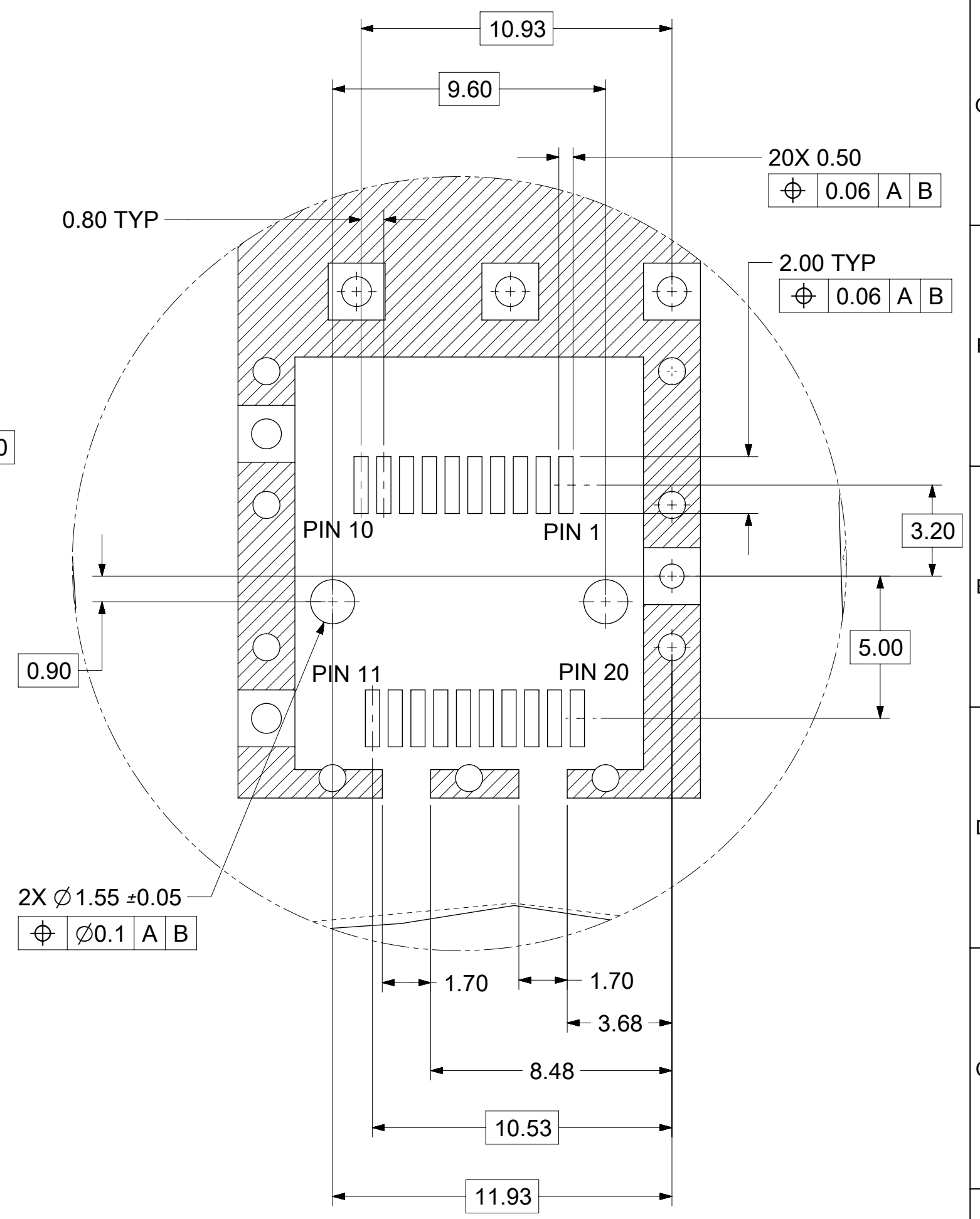
- PRESS FIT LEGS, 0.120 INCHES LONG 1.57 MINIMUM PCB THICKNESS.
- THIS CAGE IS FOR SINGLE SIDED USE ONLY.
- CAN BE USED WITH THE FOLLOWING LIGHT PIPE PART NUMBERS:
 747260001 - LIGHT PIPE FROM BACK TO TOP REFER TO DOCUMENT SD-747260001
 747260002 - LIGHT PIPE FROM SIDE TO TOP REFER TO DOCUMENT SD-747260002
- MATERIAL: COPPER ALLOY
 PLATING: PRE-PLATED WITH NICKEL
- NO RoHS EXEMPTIONS

THIS DRAWING CONTAINS INFORMATION THAT IS PROPRIETARY TO MOLEX ELECTRONIC TECHNOLOGIES, LLC AND SHOULD NOT BE USED WITHOUT WRITTEN PERMISSION											
SEE REVISION TABLE EC NO: 116814 DRWN: PGSHETTY CHKD: DSUN15 REV / APPR: RCHEN08	GENERAL TOLERANCES (UNLESS SPECIFIED)		DIMENSION UNITS	SCALE							
	ANGULAR TOL ± 1.0 °		MM	3.5:1							
	4 PLACES ±	DRWN BY	DATE	PGSHETTY 2017/04/06							
	3 PLACES ±	CHKD BY	DATE	DSUN15 2017/05/11							
	2 PLACES ± 0.13	APPR BY	DATE	RCHEN08 2017/05/15							
	1 PLACE ± 0.25	DRAWING SIZE	THIRD ANGLE PROJECTION	C							
0 PLACES ±	DRAFT WHERE APPLICABLE MUST REMAIN WITHIN DIMENSIONS										
SERIES			MATERIAL NUMBER			CUSTOMER			PRODUCT CUSTOMER DRAWING		
74737			747370009						SFP ONE PIECE CAGE PRESS-FIT (0.120 LEGS)		
DOCUMENT NUMBER			DOC TYPE			DOC PART			SHEET NUMBER		
747370009			PSD			ASY			1 OF 4		

PCB LAYOUT FOR SINGLE SIDE MOUNT



CROSS-HATCHED AREA DENOTES COMPONENT AND TRACE KEEP-OUT (EXCEPT CHASSIS GROUND)



DETAIL 1
SCALE 6:1

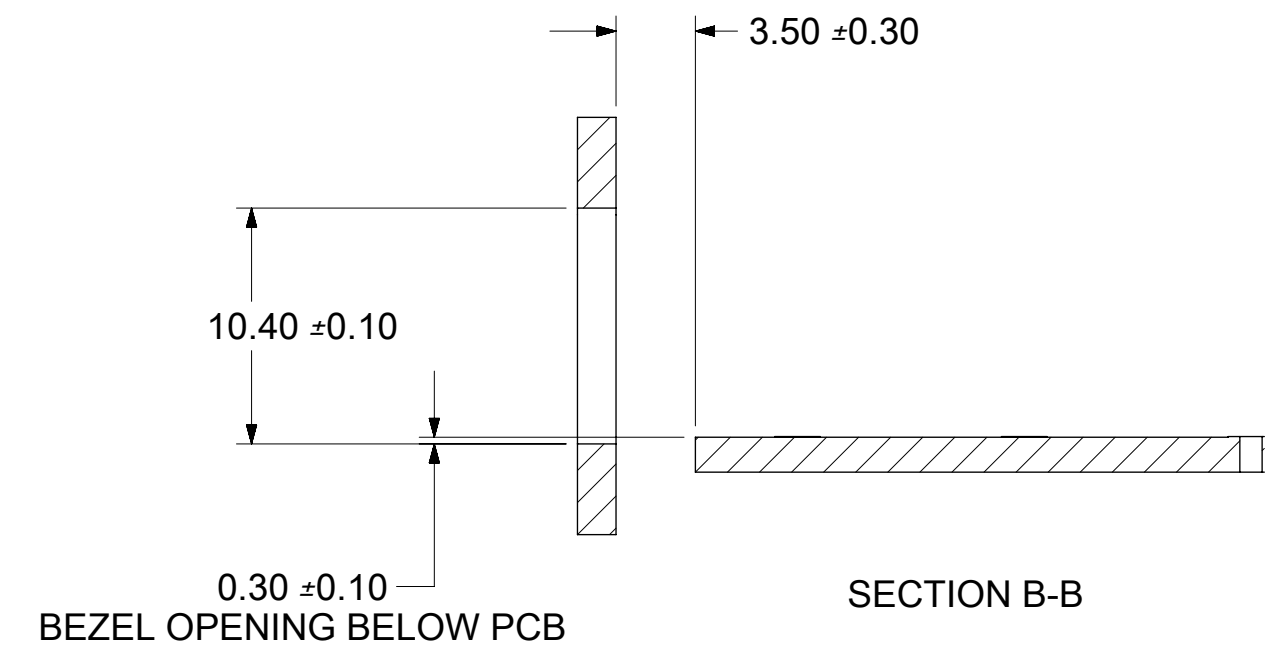
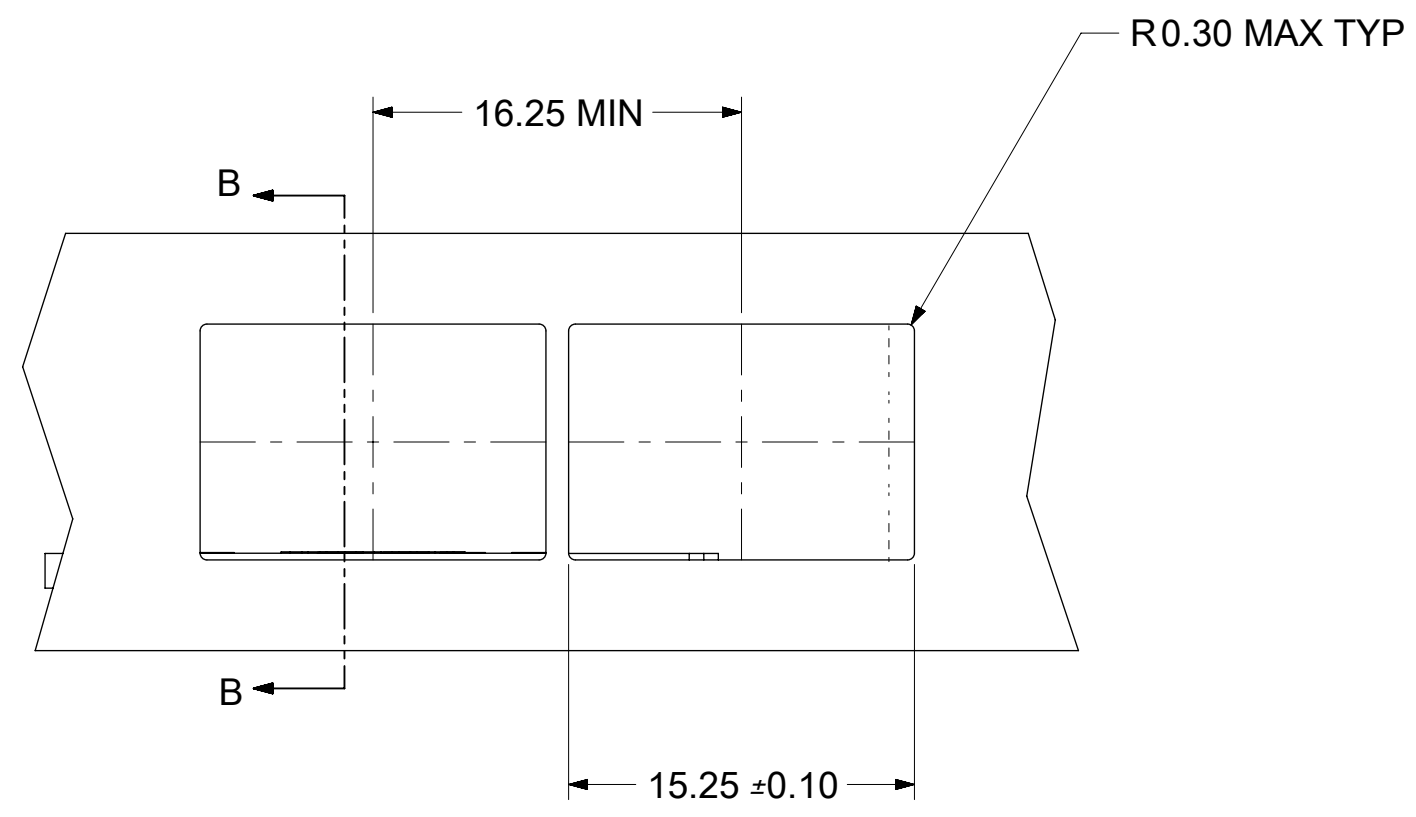
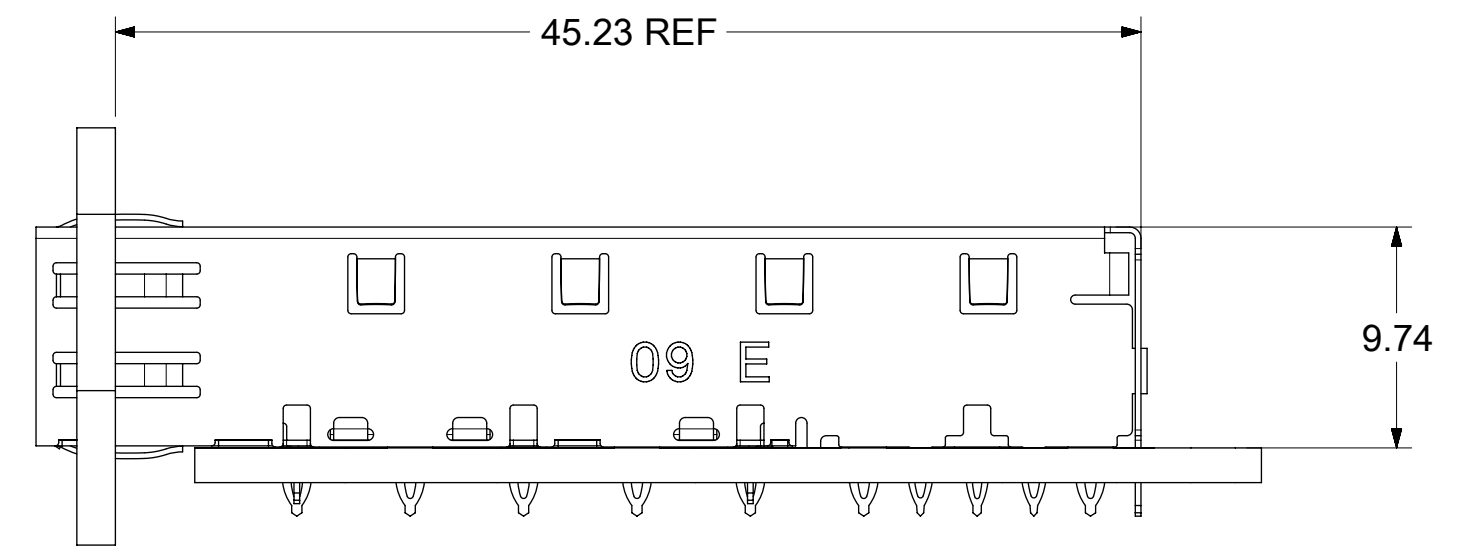
HOST CONNECTOR DETAIL

THIS AREA DENOTES COMPONENT KEEP-OUT (TRACES ALLOWED)

SEE DETAIL 1

- 1 DATUM AND BASIC DIMENSIONS ESTABLISHED BY CUSTOMER.
- 2 PADS AND VIAS ARE CHASSIS GROUND.
- 3 HOLE LAYOUT SHOWN IS FOR SINGLE SIDED MOUNTING ONLY.
4. CONNECTOR PAD LAYOUT PER SFP MSA, WILL ACCOMODATE MOLEX CONNECTOR SERIES 74441 OR EQUIVALENT.

THIS DRAWING CONTAINS INFORMATION THAT IS PROPRIETARY TO MOLEX ELECTRONIC TECHNOLOGIES, LLC AND SHOULD NOT BE USED WITHOUT WRITTEN PERMISSION											
SEE REVISION TABLE	EC NO: 116814	2017/04/06	GENERAL TOLERANCES (UNLESS SPECIFIED)		DIMENSION UNITS	SCALE					
	DRWN: PGSSETTY	2017/05/11	ANGULAR TOL ± 1.0 °		MM	5:1					
	CHKD: DSUN15	2017/05/15	4 PLACES	±	DRWN BY	DATE	SFP ONE PIECE CAGE PRESS-FIT (0.120 LEGS)				
	REV APPR: RCHEN08		3 PLACES	±	PGSHETTY	2017/04/06	PRODUCT CUSTOMER DRAWING				
			2 PLACES	± 0.13	CHKD BY	DATE	SERIES MATERIAL NUMBER CUSTOMER				
		1 PLACE	± 0.25	APPR BY	DATE	74737 747370009					
		0 PLACES	±	DRWN BY	DATE	DOCUMENT NUMBER					
		DRAFT WHERE APPLICABLE MUST REMAIN WITHIN DIMENSIONS		DRAWING SIZE	THIRD ANGLE PROJECTION	747370009					
						DOC TYPE DOC PART SHEET NUMBER					
						PSD ASY 2 OF 4					



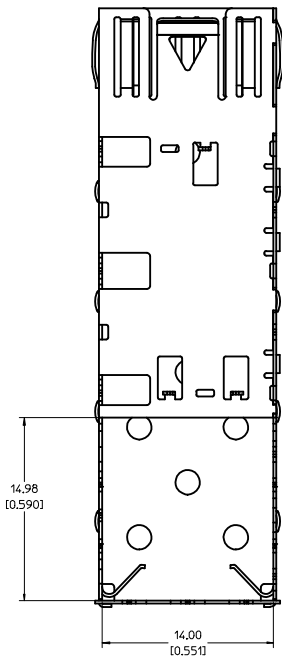
THIS DRAWING CONTAINS INFORMATION THAT IS PROPRIETARY TO MOLEX ELECTRONIC TECHNOLOGIES, LLC AND SHOULD NOT BE USED WITHOUT WRITTEN PERMISSION

SEE REVISION TABLE EC NO: 116814 DRWN: PGSHETTY CHKD: DSUN15 REV / APPR: RCHEN08	GENERAL TOLERANCES (UNLESS SPECIFIED)		DIMENSION UNITS	SCALE	molex SFP ONE PIECE CAGE PRESS-FIT (0.120 LEGS)		
	ANGULAR TOL ± 1.0 °		MM	3:1			
	4 PLACES ±	DRWN BY	DATE				
	3 PLACES ±	PGSHETTY	2017/04/06				
2 PLACES ± 0.13	CHKD BY	DATE		PRODUCT CUSTOMER DRAWING			
1 PLACE ± 0.25	DSUN15	2017/05/11					
0 PLACES ±	APPR BY	DATE		SERIES	MATERIAL NUMBER	CUSTOMER	
DRAFT WHERE APPLICABLE MUST REMAIN WITHIN DIMENSIONS	RCHEN08	2017/05/15		74737	747370009		
DRAWING SIZE	THIRD ANGLE PROJECTION		DOCUMENT NUMBER		DOC TYPE	DOC PART	SHEET NUMBER
C			747370009		PSD	ASY	3 OF 4

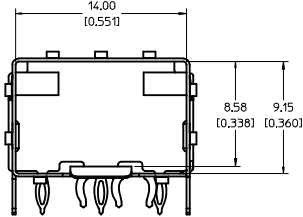
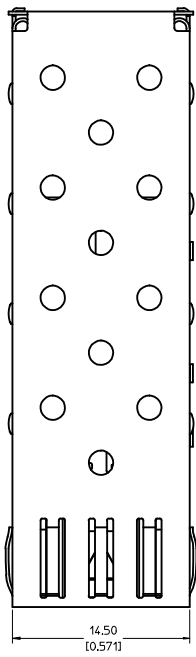
REV	DATE	DESCRIPTION
A	2006/11/30	INITIAL RELEASE
B	2007/01/23	[1] CHANGED MODULE EJECT FEATURE TOL FROM +/- 1DEG TO +/-5DEG; [2] CHANGED EJECT ARM ANGLE TOL FROM +/-1DEG TO 50DEG MIN; [3] CHANGED EMI SPRING FINGER OVERLAP FROM 0.21MM TO 0.01MM MIN; [4] ADDED DIM TO LEGS: OVERALL LENGTH, LENGTH FROM TIP TO SLOT, AND SLOT LENGTH.; [5] DELETED COMMENTS SECTION FROM REV CHART.; [6] ADDED "REF" TO DIM K2 ON SHEET 2.
C	2007/04/25	[1] ADDED REV SHEET; [2] UPDATED REV NOTES A-B; [3] UPDATD DRAWING TO REFLECT CHG'S MADE TO EM-74737-009-ASSY REV C; [4] ON SHT1 ROTATED BTM VIEW 180 DEGREES.
D	2017/04/05	REMASTERED FROM SD-74737-009 REV_C TO 747370009 PSD ASY REV_D IN NX SHEET 2 : F1 : ADDED TYP TO THE DIM 2.00 SHEET 3 : E7 : ADDED DIM R0.3 MAX TYP

THIS DRAWING CONTAINS INFORMATION THAT IS PROPRIETARY TO MOLEX ELECTRONIC TECHNOLOGIES, LLC AND SHOULD NOT BE USED WITHOUT WRITTEN PERMISSION

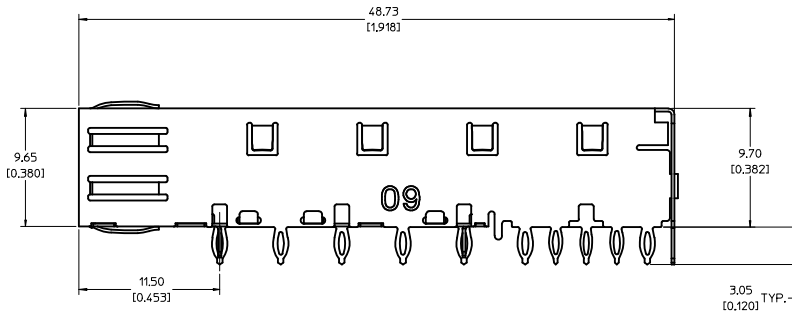
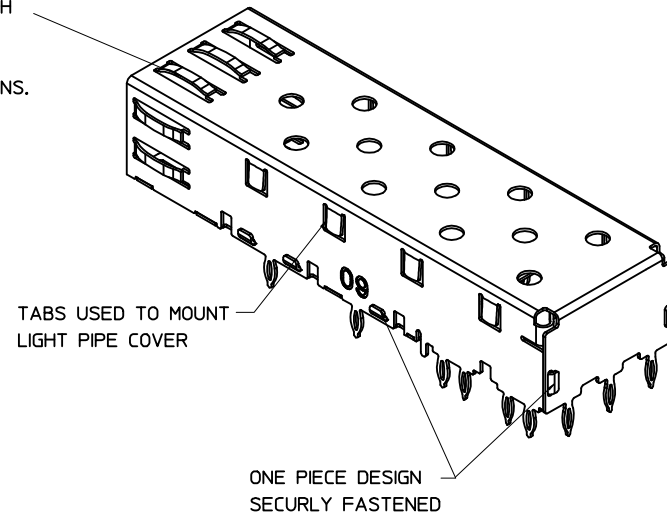
SEE REVISION TABLE	EC NO: 116814	2017/04/06	GENERAL TOLERANCES (UNLESS SPECIFIED)	DIMENSION UNITS	SCALE	molex SFP ONE PIECE CAGE PRESS-FIT (0.120 LEGS)	
	DRWN: PGSHETTY	2017/05/11		MM	1:1		
	CHKD: DSUN15	2017/05/15		ANGULAR TOL ± 1.0 °	DRWN BY		DATE
	REV / APPR: RCHEN08			4 PLACES ±	PGSHETTY		2017/04/06
				3 PLACES ±	CHKD BY		DATE
				2 PLACES ± 0.13	DSUN15		2017/05/11
				1 PLACE ± 0.25	APPR BY		DATE
				0 PLACES ±	RCHEN08		2017/05/15
				DRAFT WHERE APPLICABLE MUST REMAIN WITHIN DIMENSIONS	DRAWING SIZE		THIRD ANGLE PROJECTION
					C		
SERIES		MATERIAL NUMBER	CUSTOMER		PRODUCT CUSTOMER DRAWING		
74737		747370009					
DOCUMENT NUMBER		DOC TYPE	DOC PART	SHEET NUMBER			
747370009		PSD	ASY	4 OF 4			



BOTTOM VIEW



SPRING FINGER GASKET WITH TWO POINTS OF CONTACT. COMPLIES WITH (SFP) MSA BOARD AND BEZEL LOCATIONS.



NOTES:

- PRESS FIT LEGS, 0.120 INCHES LONG. 1.57 [0.062] MINIMUM PCB THICKNESS.
- THIS CAGE IS FOR SINGLE SIDED USE ONLY.
- CAN BE USED WITH THE FOLLOWING LIGHT PIPE PART NUMBERS:

747260001 - LIGHT PIPE FROM BACK TO TOP
(REFER TO DOCUMENT SD-74726-001)

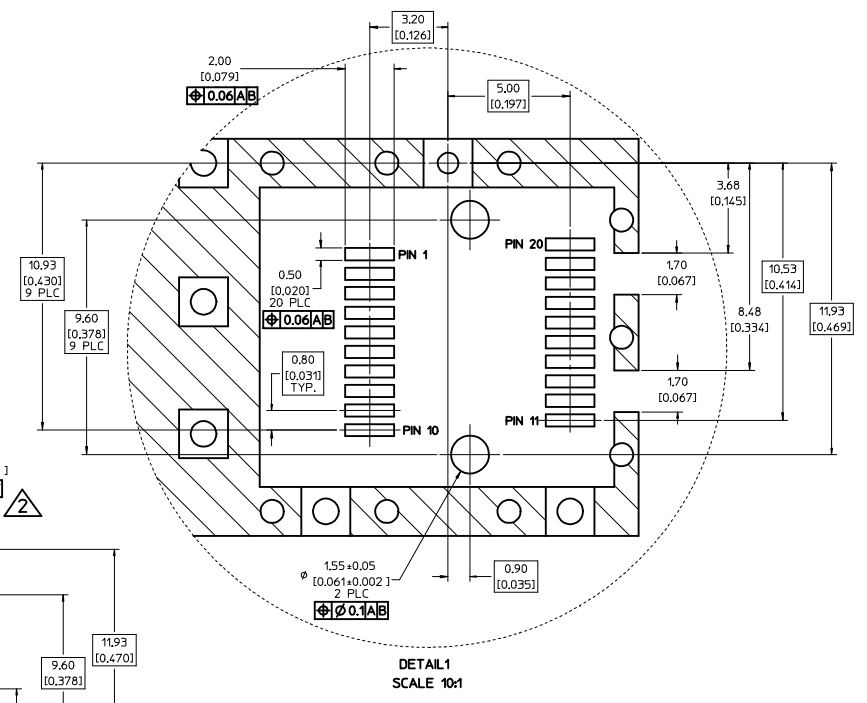
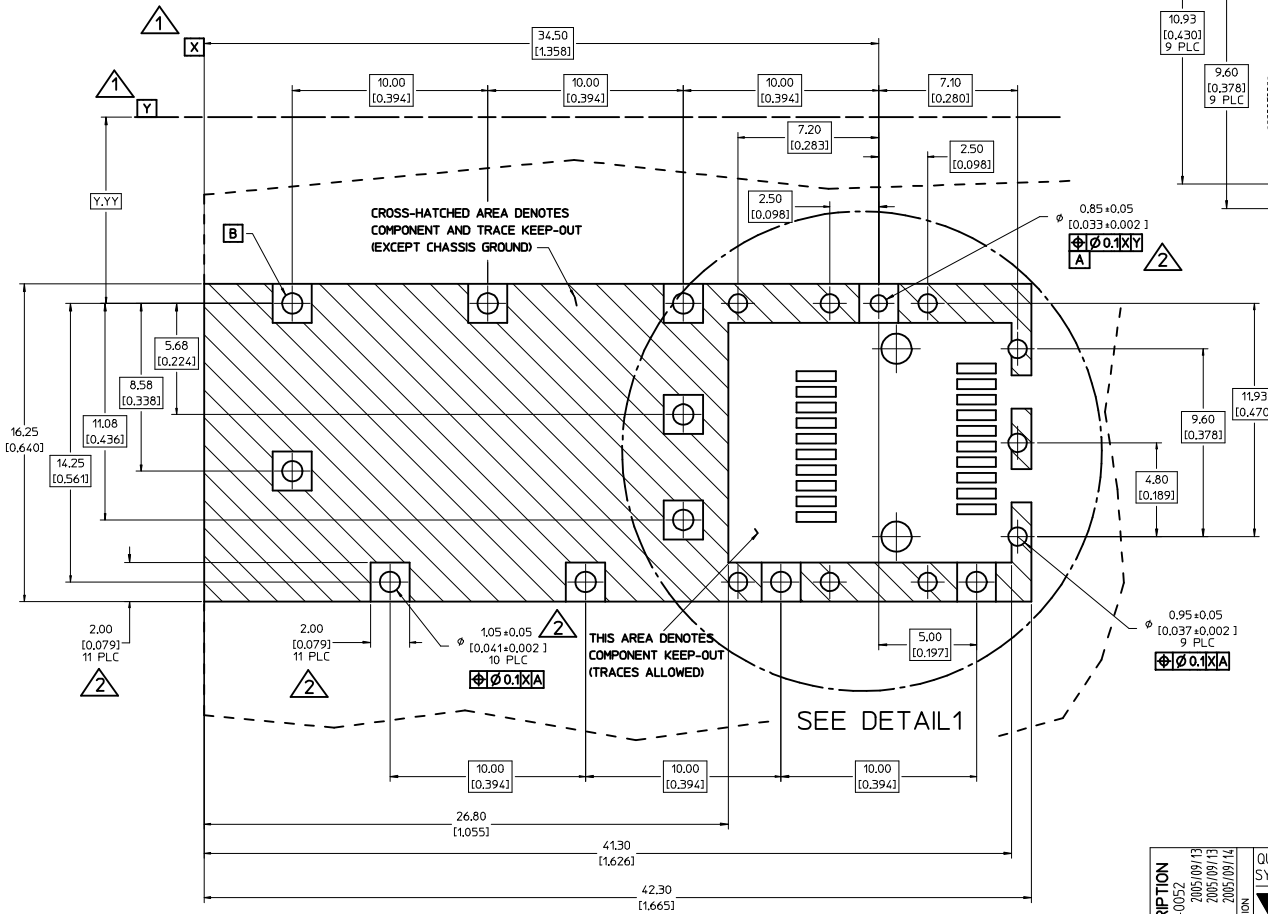
747260002 - LIGHT PIPE FROM SIDE TO TOP
(REFER TO DOCUMENT SD-74726-002)

4. MATERIAL: COPPER ALLOY
PLATING: PRE-PLATED WITH NICKEL

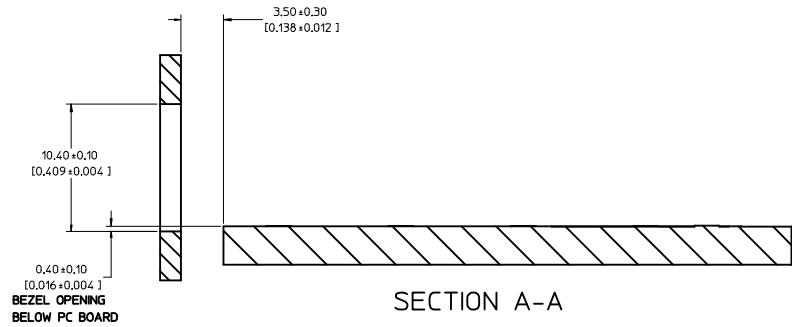
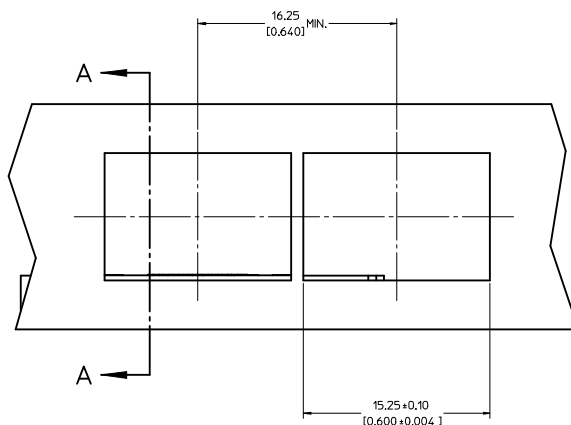
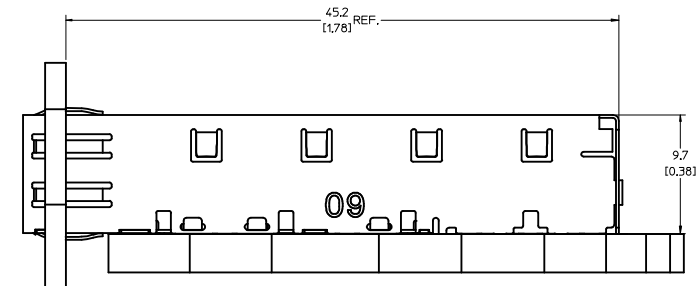
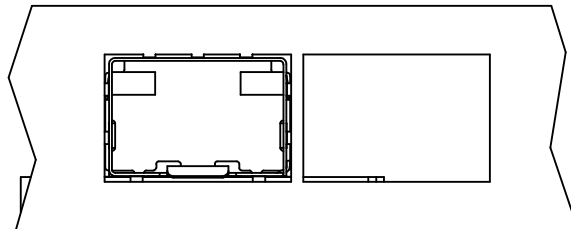
5. THIS PART MEETS THE RESTRICTION OF HAZARDOUS SUBSTANCES IN ELECTRICAL AND ELECTRONIC EQUIPMENT (ROHS) DIRECTIVE (2002/95/EC).

ENTER DESCRIPTION EEC NO: USY2006-0052 DRAWN BY: KSI MONSON 2005/09/13 CHECKED BY: CHYD BRUSSELL 2005/09/13 APPROVED BY: BRUSSELL 2005/09/14	QUALITY SYMBOLS ▽=0 ▽=0	GENERAL TOLERANCES (UNLESS SPECIFIED)		DIMENSION STYLE MM/IN		SCALE 5:1	DESIGN UNITS METRIC	THIRD ANGLE PROJECTION		
		4 PLACES ±--- ±---	3 PLACES ±--- ±.005	2 PLACES ±0.13 ±.01	1 PLACE ±0.25 ±---	ANGULAR ± 1°	DRAFT WHERE APPLICABLE MUST REMAIN WITHIN DIMENSIONS	DRAWN BY: KSI MONSON 2005/09/12 CHECKED BY: BRUSSELL 2005/09/12 APPROVED BY: BRUSSELL 2005/09/12	DATE:	TITLE SFP ONE PIECE CAGE PRESS-FIT (0.120 LEGS)
		MATERIAL NO. 747370009			DOCUMENT NO. SD-74737-0009			MOLEX INCORPORATED		
		SIZE D			THIS DRAWING CONTAINS INFORMATION THAT IS PROPRIETARY TO MOLEX INCORPORATED AND SHOULD NOT BE USED WITHOUT WRITTEN PERMISSION					

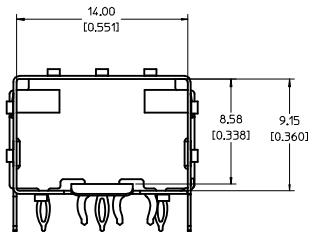
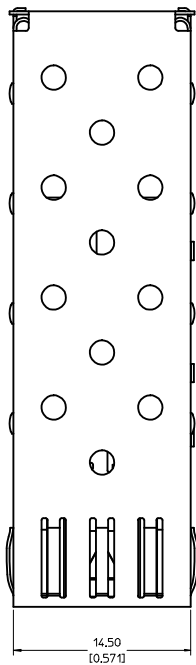
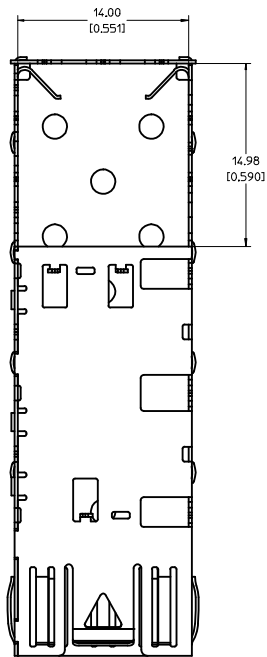
- 1 DATUM AND BASIC DIMENSIONS ESTABLISHED BY CUSTOMER.
- 2 PADS AND VIAS ARE CHASSIS GROUND.
- 3 HOLE LAYOUT SHOWN IS FOR SINGLE SIDED MOUNTING ONLY.
- 4 CONNECTOR PAD LAYOUT PER SFP MSA, WILL ACCOMMODATE MOLEX CONNECTOR SERIES 74441 OR EQUIVALENT.



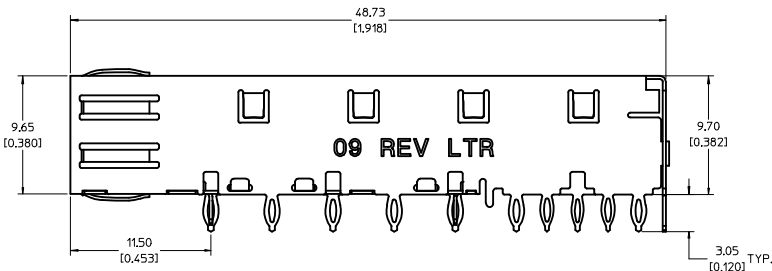
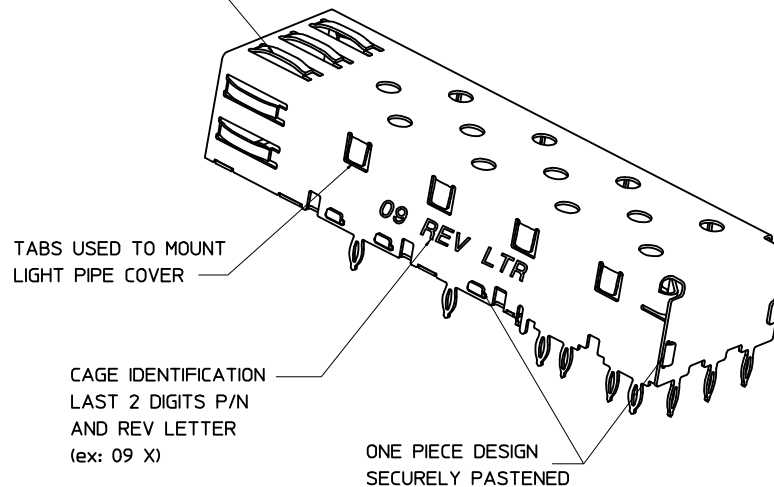
ENTER DESCRIPTION IEC NO.: USY2006-0052 DRAWN BY: KSI/IMONSO 2005/09/13 CHECKED BY: CHYD/BRUSSELL 2005/09/13 APPROVED BY: APPR/BRUSSELL 2005/09/14	QUALITY SYMBOLS	GENERAL TOLERANCES (UNLESS SPECIFIED)	DIMENSION STYLE	SCALE	DESIGN UNITS	THIRD ANGLE PROJECTION	
	$\nabla=0$ $\nabla=0$	mm INCH 4 PLACES ± --- ± --- 3 PLACES ± --- ± .005 2 PLACES ± 0.13 ± .01 1 PLACE ± 0.25 ± --- ANGULAR ± 1 °	MM/IN	8:1	METRIC		
	DRAFT WHERE APPLICABLE MUST REMAIN WITHIN DIMENSIONS	DRAWN BY: KSI/IMONSO 2005/09/12 CHECKED BY: BRUSSELL 2005/09/12 APPROVED BY: BRUSSELL 2005/09/12	MATERIAL NO. 747370009	DOCUMENT NO. SD-74737-0009	SFP ONE PIECE CAGE PRESS-FIT (0.120 LEGS)		SHEET NO. 2 OF 3
	SIZE D	THIS DRAWING CONTAINS INFORMATION THAT IS PROPRIETARY TO MOLEX INCORPORATED AND SHOULD NOT BE USED WITHOUT WRITTEN PERMISSION					MOLEX INCORPORATED



ENTER DESCRIPTION IEC NO: USY2006-0052 DRAWN BY: KSI MONSON 2005/09/13 CHECKED BY: CHYD BRUSSELL 2005/09/13 APPROVED BY: APPR: BRUSSELL 2005/09/14	QUALITY SYMBOLS ▽=0 ▽=0	GENERAL TOLERANCES (UNLESS SPECIFIED)		DIMENSION STYLE MM/IN	SCALE 5:1	DESIGN UNITS METRIC	THIRD ANGLE PROJECTION				
		4 PLACES ± --- ± ---	3 PLACES ± --- ± .005	2 PLACES ± 0.13 ± .01	1 PLACE ± 0.25 ± ---	DRAWN BY: KSI MONSON 2005/09/12 CHECKED BY: BRUSSELL 2005/09/12 APPROVED BY: BRUSSELL 2005/09/12	DATE:	TITLE SFP ONE PIECE CAGE PRESS-FIT (0,120 LEGS)	MATERIAL NO. 747370009	DOCUMENT NO. SD-74737-0009	SHEET NO. 3 OF 3
		DRAFT WHERE APPLICABLE MUST REMAIN WITHIN DIMENSIONS		ANGULAR ± 1 °		MOLEX INCORPORATED			THIS DRAWING CONTAINS INFORMATION THAT IS PROPRIETARY TO MOLEX INCORPORATED AND SHOULD NOT BE USED WITHOUT WRITTEN PERMISSION		



SPRING FINGER GASKET WITH TWO POINTS OF CONTACT. COMPLIES WITH (SFP) MSA BOARD AND BEZEL LOCATIONS.



NOTES:

- PRESS FIT LEGS, 0.120 INCHES LONG. 1.57 [0.062] MINIMUM PCB THICKNESS.
- THIS CAGE IS FOR SINGLE SIDED USE ONLY.
- CAN BE USED WITH THE FOLLOWING LIGHT PIPE PART NUMBERS:

747260001 - LIGHT PIPE FROM BACK TO TOP
(REFER TO DOCUMENT SD-74726-001)

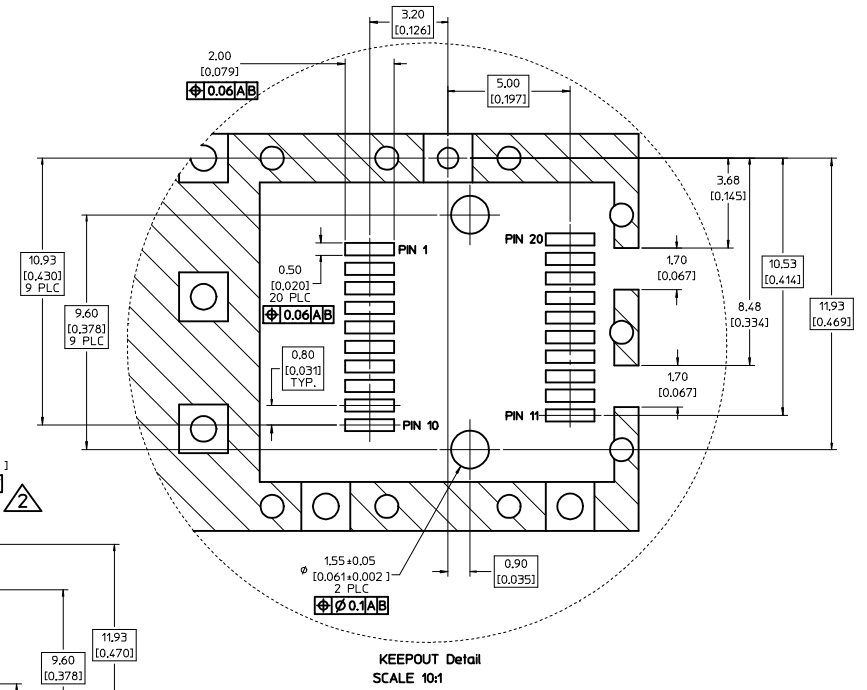
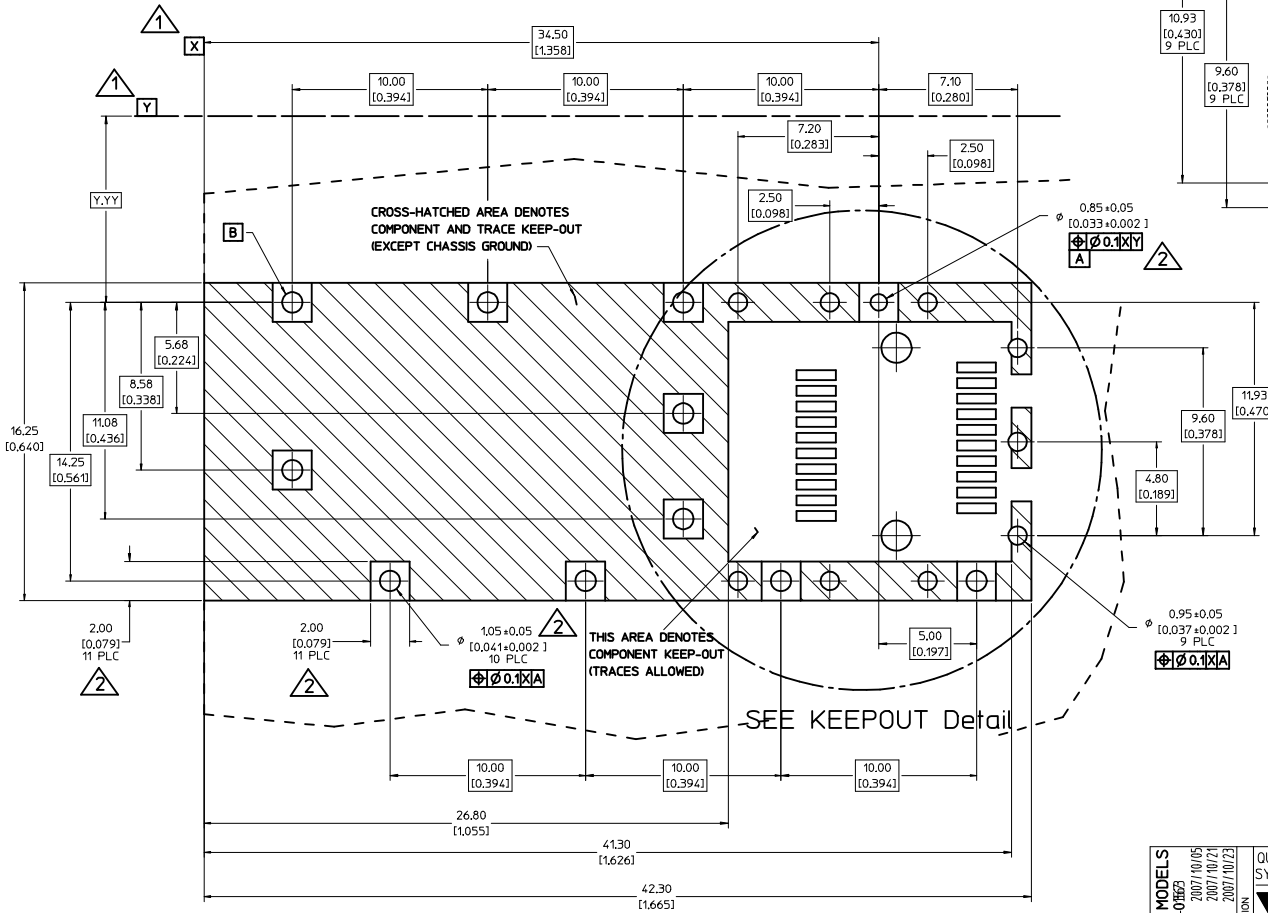
747260002 - LIGHT PIPE FROM SIDE TO TOP
(REFER TO DOCUMENT SD-74726-002)

4. MATERIAL: COPPER ALLOY
PLATING: PRE-PLATED WITH NICKEL

5. THIS PART MEETS THE RESTRICTION OF HAZARDOUS SUBSTANCES IN ELECTRICAL AND ELECTRONIC EQUIPMENT (ROHS) DIRECTIVE (2002/95/EC).

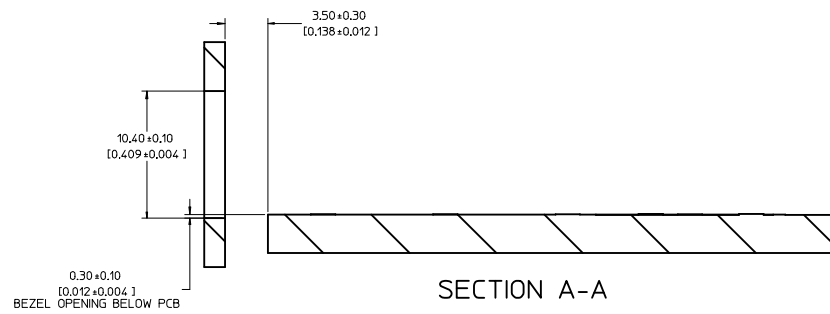
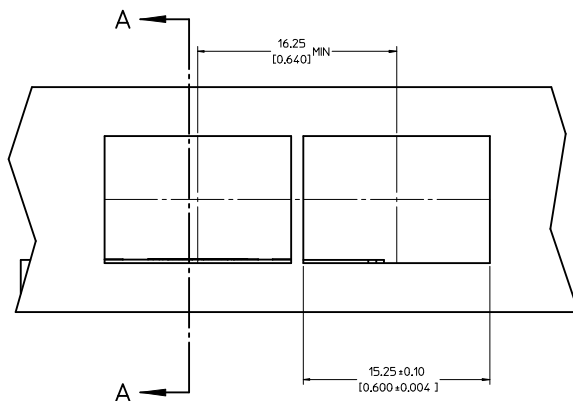
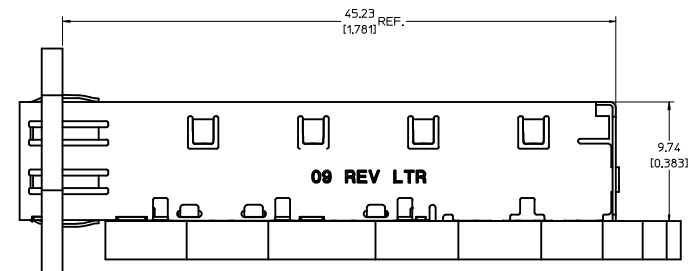
UPDATED 3D MODELS EC NO: USY2008-018623 DRAWN BY: CCOX 2007/10/05 CHKD: 2007/10/21 APPR: RMAHMOOD 2007/10/23	QUALITY SYMBOLS	GENERAL TOLERANCES (UNLESS SPECIFIED)	DIMENSION STYLE	SCALE	DESIGN UNITS	THIRD ANGLE PROJECTION																	
	$\nabla=0$ $\nabla=0$	<table border="1"> <tr> <th></th> <th>mm</th> <th>INCH</th> </tr> <tr> <td>4 PLACES</td> <td>±---</td> <td>±---</td> </tr> <tr> <td>3 PLACES</td> <td>±---</td> <td>±.005</td> </tr> <tr> <td>2 PLACES</td> <td>±0.13</td> <td>±.01</td> </tr> <tr> <td>1 PLACE</td> <td>±0.25</td> <td>±---</td> </tr> </table>		mm	INCH	4 PLACES	±---	±---	3 PLACES	±---	±.005	2 PLACES	±0.13	±.01	1 PLACE	±0.25	±---	MM/IN	5:1	METRIC			
		mm	INCH																				
	4 PLACES	±---	±---																				
3 PLACES	±---	±.005																					
2 PLACES	±0.13	±.01																					
1 PLACE	±0.25	±---																					
<table border="1"> <tr> <td>DRAWN BY</td> <td>DATE</td> <td>TITLE</td> </tr> <tr> <td>CCOX</td> <td>2006/11/22</td> <td>SFP ONE PIECE CAGE</td> </tr> <tr> <td>CHECKED BY</td> <td>DATE</td> <td>PRESS-FIT (0.120 LEGS)</td> </tr> <tr> <td>RMAHMOOD</td> <td>2006/11/22</td> <td></td> </tr> <tr> <td>APPROVED BY</td> <td>DATE</td> <td></td> </tr> </table>	DRAWN BY	DATE	TITLE	CCOX	2006/11/22	SFP ONE PIECE CAGE	CHECKED BY	DATE	PRESS-FIT (0.120 LEGS)	RMAHMOOD	2006/11/22		APPROVED BY	DATE		<table border="1"> <tr> <td>MATERIAL NO.</td> <td>DOCUMENT NO.</td> </tr> <tr> <td>747370009</td> <td>SD-74737-009</td> </tr> </table>	MATERIAL NO.	DOCUMENT NO.	747370009	SD-74737-009	<table border="1"> <tr> <td>SHEET NO.</td> </tr> <tr> <td>1 OF 4</td> </tr> </table>	SHEET NO.	1 OF 4
DRAWN BY	DATE	TITLE																					
CCOX	2006/11/22	SFP ONE PIECE CAGE																					
CHECKED BY	DATE	PRESS-FIT (0.120 LEGS)																					
RMAHMOOD	2006/11/22																						
APPROVED BY	DATE																						
MATERIAL NO.	DOCUMENT NO.																						
747370009	SD-74737-009																						
SHEET NO.																							
1 OF 4																							
DRAFT WHERE APPLICABLE MUST REMAIN WITHIN DIMENSIONS																							
THIS DRAWING CONTAINS INFORMATION THAT IS PROPRIETARY TO MOLEX INCORPORATED AND SHOULD NOT BE USED WITHOUT WRITTEN PERMISSION																							

- 1 DATUM AND BASIC DIMENSIONS ESTABLISHED BY CUSTOMER.
- 2 PADS AND VIAS ARE CHASSIS GROUND.
- 3 HOLE LAYOUT SHOWN IS FOR SINGLE SIDED MOUNTING ONLY.
- 4 CONNECTOR PAD LAYOUT PER SFP MSA, WILL ACCOMMODATE MOLEX CONNECTOR SERIES 74441 OR EQUIVALENT.



UPDATED 3D MODELS EC NO: USY2008-01853 DRAWN BY: CCOX CHYK: 2007/10/21 APPR: RMAHMOOD 2007/10/23	QUALITY SYMBOLS $\nabla=0$ $\nabla=0$	GENERAL TOLERANCES (UNLESS SPECIFIED) <table border="1"> <thead> <tr> <th></th> <th>mm</th> <th>INCH</th> </tr> </thead> <tbody> <tr> <td>4 PLACES</td> <td>±---</td> <td>±---</td> </tr> <tr> <td>3 PLACES</td> <td>±---</td> <td>±.005</td> </tr> <tr> <td>2 PLACES</td> <td>±0.13</td> <td>±.01</td> </tr> <tr> <td>1 PLACE</td> <td>±0.25</td> <td>±---</td> </tr> </tbody> </table>		mm	INCH	4 PLACES	±---	±---	3 PLACES	±---	±.005	2 PLACES	±0.13	±.01	1 PLACE	±0.25	±---	DIMENSION STYLE MM/IN	SCALE 8:1	DESIGN UNITS METRIC	THIRD ANGLE PROJECTION
		mm	INCH																		
	4 PLACES	±---	±---																		
	3 PLACES	±---	±.005																		
2 PLACES	±0.13	±.01																			
1 PLACE	±0.25	±---																			
		DRAWN BY: CCOX DATE: 2006/11/22	CHECKED BY: RMAHMOOD DATE: 2006/11/22	TITLE SFP ONE PIECE CAGE PRESS-FIT (0.120 LEGS)																	
		APPROVED BY:	MATERIAL NO: 747370009	DOCUMENT NO: SD-74737-009	MOLEX INCORPORATED																
	DRAFT WHERE APPLICABLE MUST REMAIN WITHIN DIMENSIONS	SIZE D	THIS DRAWING CONTAINS INFORMATION THAT IS PROPRIETARY TO MOLEX INCORPORATED AND SHOULD NOT BE USED WITHOUT WRITTEN PERMISSION																		

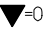
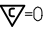

20 19 18 17 16 15 14 13 12 11 10 9 8 7 6 5 4 3 2 1

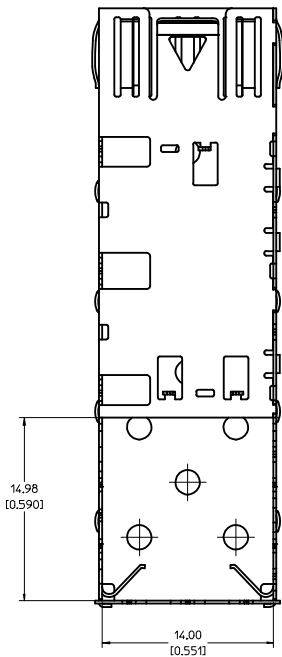


UPDATED 3D MODELS E.C. NO.: USY2008-01853 DRAWN BY: CCOX CHYK: 2007/10/21 APPROVED BY: APPR:RMAHMOOD 2007/10/23	QUALITY SYMBOLS	GENERAL TOLERANCES (UNLESS SPECIFIED)		DIMENSION STYLE	SCALE	DESIGN UNITS	THIRD ANGLE PROJECTION
	▽=0 ▽=0	mm	INCH	MM/IN	5:1	METRIC	
		4 PLACES ± ---	± ---	DRAWN BY: CCOX	DATE: 2006/11/22	TITLE: SFP ONE PIECE CAGE PRESS-FIT (0.120 LEGS)	
		3 PLACES ± ---	± .005	CHECKED BY: RMAHMOOD	DATE: 2006/11/22	APPROVED BY: [Signature]	
	2 PLACES ± 0.13	± .01	MATERIAL NO. 747370009		DOCUMENT NO. SD-74737-009		SHEET NO. 3 OF 4
	1 PLACE ± 0.25	± ---	DRAFT WHERE APPLICABLE MUST REMAIN WITHIN DIMENSIONS		THIS DRAWING CONTAINS INFORMATION THAT IS PROPRIETARY TO MOLEX INCORPORATED AND SHOULD NOT BE USED WITHOUT WRITTEN PERMISSION		

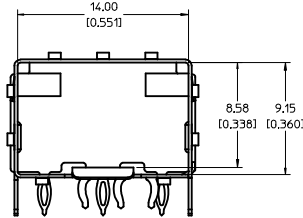
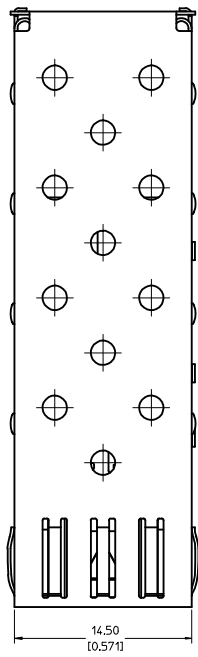
19 18 17 16 15 14 13 12 11 10 9 8 7 6 5 4 3 2 1

DATE	REV	CHANGES
2006/11/30	A	INITIAL RELEASE
2007/01/23	B	[1] CHANGED MODULE EJECT FEATURE TOL FROM +/- 1DEG TO +/-5DEG, [2] CHANGED EJECT ARM ANGLE TOL FROM +/-1DEG TO 50DEG MIN, [3] CHANGED EMI SPRING FINGER OVERLAP FROM 0.21MM TO 0.01MM MIN, [4] ADDED DIM TO LEGS: OVERALL LENGTH, LENGTH FROM TIP TO SLOT, AND SLOT LENGTH., [5] DELETED COMMENTS SECTION FROM REV CHART., [6] ADDED 'REF' TO DIM K2 ON SHEET 2.
2007/04/25	C	[1] ADDED REV SHEET, [2] UPDATED REV NOTES A-B, [3] UPDATD DRAWING TO REFLECT CHG'S MADE TO EM-74737-009-ASSY REV C, [4] ON SHT1 ROTATED BTM_VIEW 180 DEGREES.

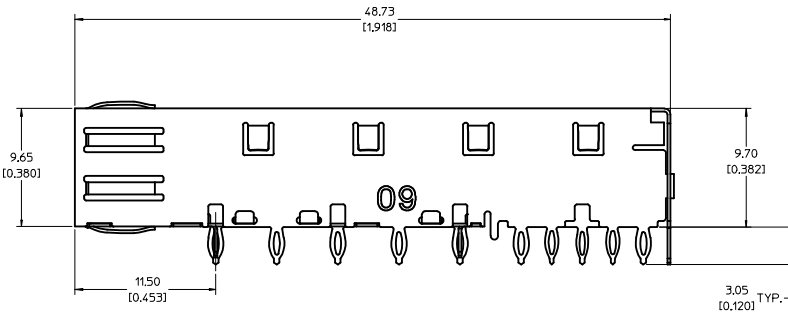
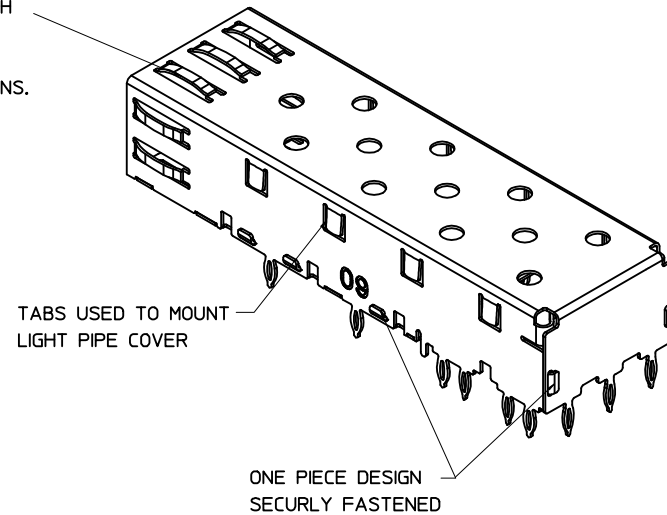
UPDATED 3D MODELS IEC NO: USY2008-0387 DRAWN BY: CCOX CHKD: C APPR: RMAHMOOD DATE: 2007/10/05 DATE: 2007/10/21 DATE: 2007/10/23	QUALITY SYMBOLS	GENERAL TOLERANCES (UNLESS SPECIFIED)	DIMENSION STYLE	SCALE	DESIGN UNITS	THIRD ANGLE PROJECTION
	 = 0  = 0	mm INCH	MM/IN	1:1	METRIC	
	4 PLACES ± --- ± --- 3 PLACES ± --- ± .005 2 PLACES ± 0.13 ± .01 1 PLACE ± 0.25 ± --- ANGULAR ± 1°	DRAWN BY DATE CCOX 2006/11/22 CHECKED BY DATE RMAHMOOD 2006/11/22 APPROVED BY DATE	TITLE SFP ONE PIECE CAGE PRESS-FIT (0.120 LEGS)			
	DRAFT WHERE APPLICABLE MUST REMAIN WITHIN DIMENSIONS	MATERIAL NO. 747370009	 MOLEX INCORPORATED			
		SIZE D	DOCUMENT NO. SD-74737-009	SHEET NO. 4 OF 4		



BOTTOM VIEW



SPRING FINGER GASKET WITH TWO POINTS OF CONTACT. COMPLIES WITH (SFP) MSA BOARD AND BEZEL LOCATIONS.



NOTES:

1. ALL PART TO BE 100 PERCENT INSPECTED.
2. PRESS FIT LEGS, 0.120 INCHES LONG. 1.57 [0.062] MINIMUM PCB THICKNESS.
3. THIS CAGE IS FOR SINGLE SIDED USE ONLY.
4. CAN BE USED WITH THE FOLLOWING LIGHT PIPE PART NUMBERS:

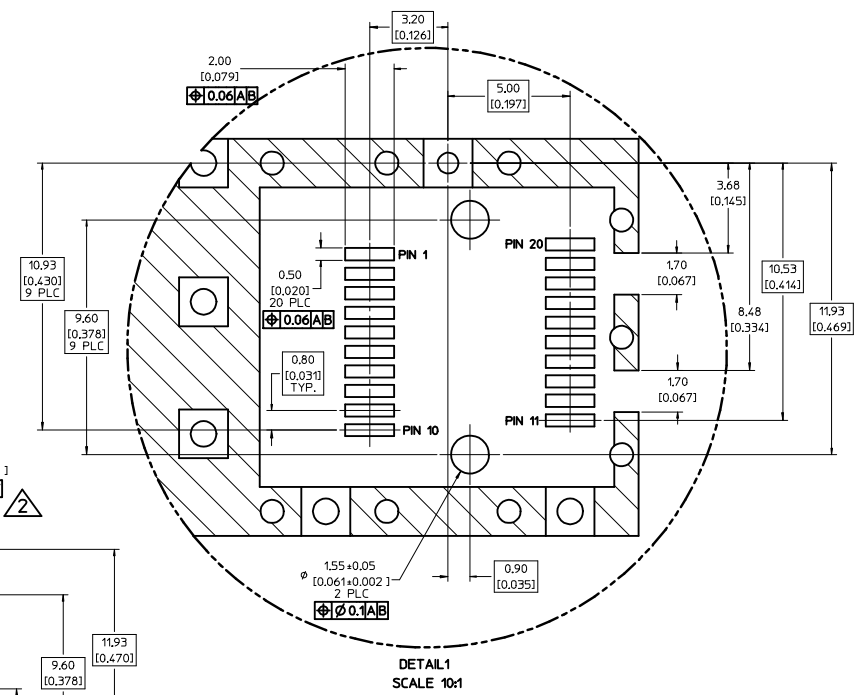
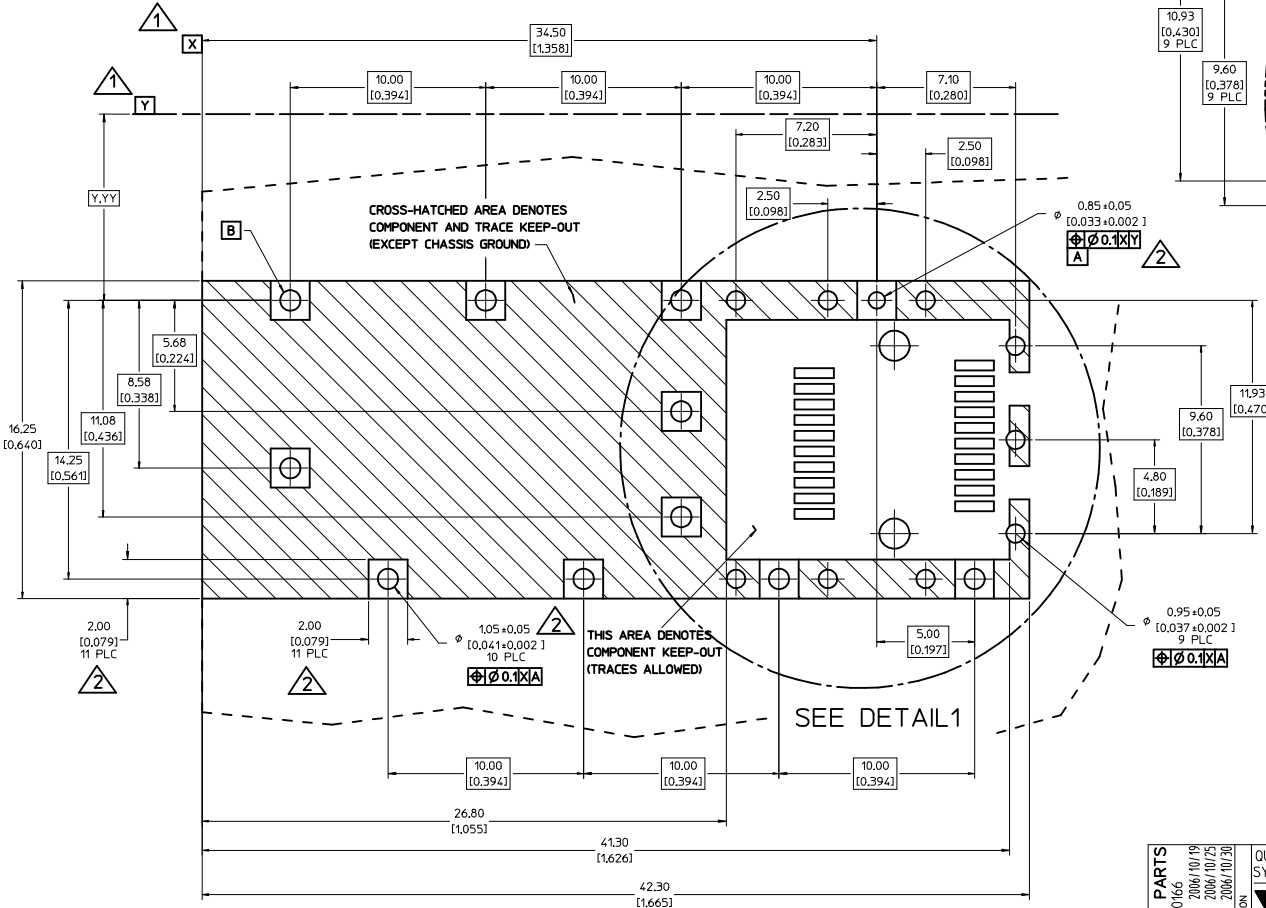
747260001 - LIGHT PIPE FROM BACK TO TOP
(REFER TO DOCUMENT SD-74726-001)

747260002 - LIGHT PIPE FROM SIDE TO TOP
(REFER TO DOCUMENT SD-74726-002)

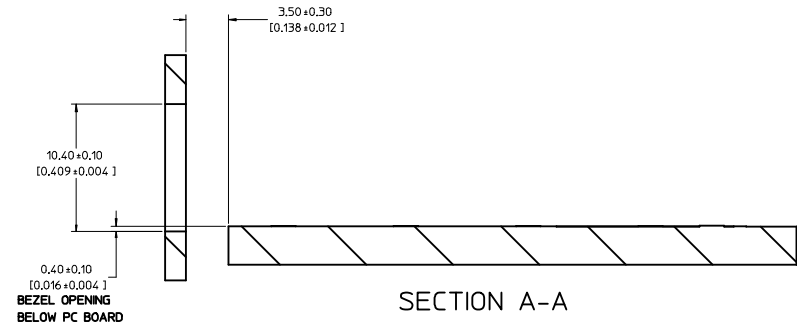
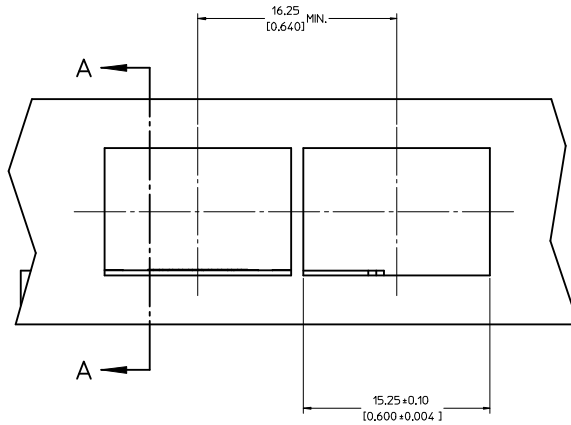
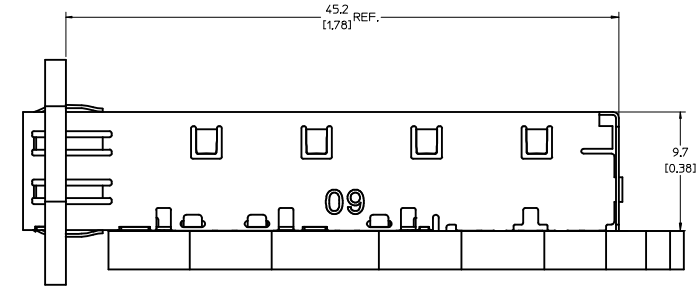
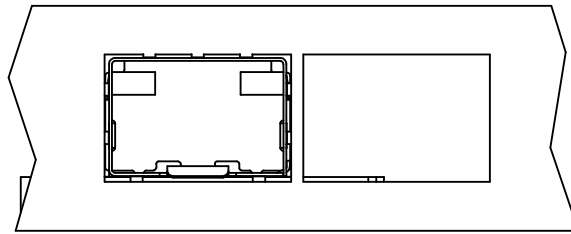
5. MATERIAL: COPPER ALLOY
PLATING: PRE-PLATED WITH NICKEL
6. THIS PART MEETS THE RESTRICTION OF HAZARDOUS SUBSTANCES IN ELECTRICAL AND ELECTRONIC EQUIPMENT (ROHS) DIRECTIVE (2002/95/EC).

100% INSPECT PARTS EC NO: USY2007-0166 DRAWN BY: CCOX CHKD: CCOX APPR: RMAHMOOD DATE: 2006/10/19 DATE: 2006/10/25 DATE: 2006/10/30	QUALITY SYMBOLS	GENERAL TOLERANCES (UNLESS SPECIFIED)	DIMENSION STYLE	SCALE	DESIGN UNITS	THIRD ANGLE PROJECTION
	▽=0 ▽=0	mm: ±0.13 INCH: ±0.01 ANGULAR ± 1°	MM/IN	5:1	METRIC	
	4 PLACES ±0.05 3 PLACES ±0.005 2 PLACES ±0.01 1 PLACE ±0.25	DRAWN BY: CCOX CHECKED BY: RMAHMOOD APPROVED BY:	DATE: 2006/10/19 DATE: 2006/10/19 DATE:	TITLE: SFP ONE PIECE CAGE PRESS-FIT (0.120 LEGS) 100% INSPECTION REQUIRED		
	DRAFT WHERE APPLICABLE MUST REMAIN WITHIN DIMENSIONS	MATERIAL NO: 747370009 DOCUMENT NO: SD-74737-020	MOLEX INCORPORATED	SHEET NO: 1 OF 3		

- 1 DATUM AND BASIC DIMENSIONS ESTABLISHED BY CUSTOMER.
- 2 PADS AND VIAS ARE CHASSIS GROUND.
- 3 HOLE LAYOUT SHOWN IS FOR SINGLE SIDED MOUNTING ONLY.
- 4 CONNECTOR PAD LAYOUT PER SFP MSA, WILL ACCOMMODATE MOLEX CONNECTOR SERIES 74441 OR EQUIVALENT.



100% INSPECT PARTS IEC NO: USY2007-0166 DRAWN: CCOX 2006/10/19 CHYK: 2006/10/25 APPROV: RMAHMOOD 2006/10/20	QUALITY SYMBOLS	GENERAL TOLERANCES (UNLESS SPECIFIED)	DIMENSION STYLE	SCALE	DESIGN UNITS	THIRD ANGLE PROJECTION															
	$\nabla=0$ $\nabla=0$	<table border="1"> <thead> <tr> <th></th> <th>mm</th> <th>INCH</th> </tr> </thead> <tbody> <tr> <td>4 PLACES</td> <td>±---</td> <td>±---</td> </tr> <tr> <td>3 PLACES</td> <td>±---</td> <td>±.005</td> </tr> <tr> <td>2 PLACES</td> <td>±0.13</td> <td>±.01</td> </tr> <tr> <td>1 PLACE</td> <td>±0.25</td> <td>±---</td> </tr> </tbody> </table>		mm	INCH	4 PLACES	±---	±---	3 PLACES	±---	±.005	2 PLACES	±0.13	±.01	1 PLACE	±0.25	±---	MM/IN	8:1	METRIC	
		mm	INCH																		
	4 PLACES	±---	±---																		
3 PLACES	±---	±.005																			
2 PLACES	±0.13	±.01																			
1 PLACE	±0.25	±---																			
DESCRIPTION	DRAFT WHERE APPLICABLE MUST REMAIN WITHIN DIMENSIONS	MATERIAL NO.	DRAWN BY DATE CCOX 2006/10/19			TITLE SFP ONE PIECE CAGE PRESS-FIT (0.120 LEGS) 100% INSPECTION REQUIRED															
REV		SIZE	CHECKED BY DATE RMAHMOOD 2006/10/19			APPROVED BY DATE															



0.40 ± 0.10
[0.016 ± 0.004]
BEZEL OPENING
BELOW PC BOARD

SECTION A-A

100% INSPECT PARTS IEC NO: USY2007-0166 DRAWN: CCOX 2006/10/19 CHYK: 2006/10/25 APPROV: MAHOOD 2006/10/30	QUALITY SYMBOLS	GENERAL TOLERANCES (UNLESS SPECIFIED)	DIMENSION STYLE	SCALE	DESIGN UNITS	THIRD ANGLE PROJECTION														
	▽=0 ▽=0	<table border="1"> <thead> <tr> <th></th> <th>mm</th> <th>INCH</th> </tr> </thead> <tbody> <tr> <td>4 PLACES</td> <td>±---</td> <td>±---</td> </tr> <tr> <td>3 PLACES</td> <td>±---</td> <td>±.005</td> </tr> <tr> <td>2 PLACES</td> <td>±0.13</td> <td>±.01</td> </tr> <tr> <td>1 PLACE</td> <td>±0.25</td> <td>±---</td> </tr> </tbody> </table>		mm	INCH	4 PLACES	±---	±---	3 PLACES	±---	±.005	2 PLACES	±0.13	±.01	1 PLACE	±0.25	±---	mm/IN 5:1	METRIC	
		mm	INCH																	
	4 PLACES	±---	±---																	
3 PLACES	±---	±.005																		
2 PLACES	±0.13	±.01																		
1 PLACE	±0.25	±---																		
DESCRIPTION	DRAFT WHERE APPLICABLE MUST REMAIN WITHIN DIMENSIONS	DRAWN BY: CCOX CHECKED BY: RMAMOOD APPROVED BY:	DATE: 2006/10/19 DATE: 2006/10/19 DATE:	TITLE: SFP ONE PIECE CAGE PRESS-FIT (0.120 LEGS) 100% INSPECTION REQUIRED	MATERIAL NO: 747370009	DOCUMENT NO: SD-74737-020	SHEET NO: 3 OF 3													
THIS DRAWING CONTAINS INFORMATION THAT IS PROPRIETARY TO MOLEX INCORPORATED AND SHOULD NOT BE USED WITHOUT WRITTEN PERMISSION	MOLEX INCORPORATED																			