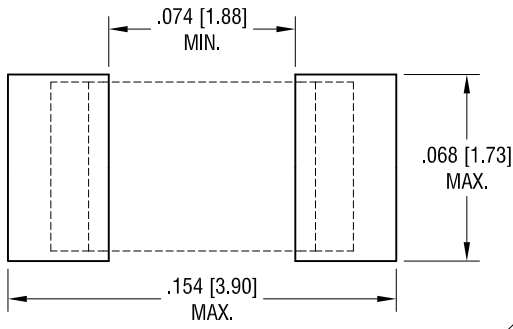
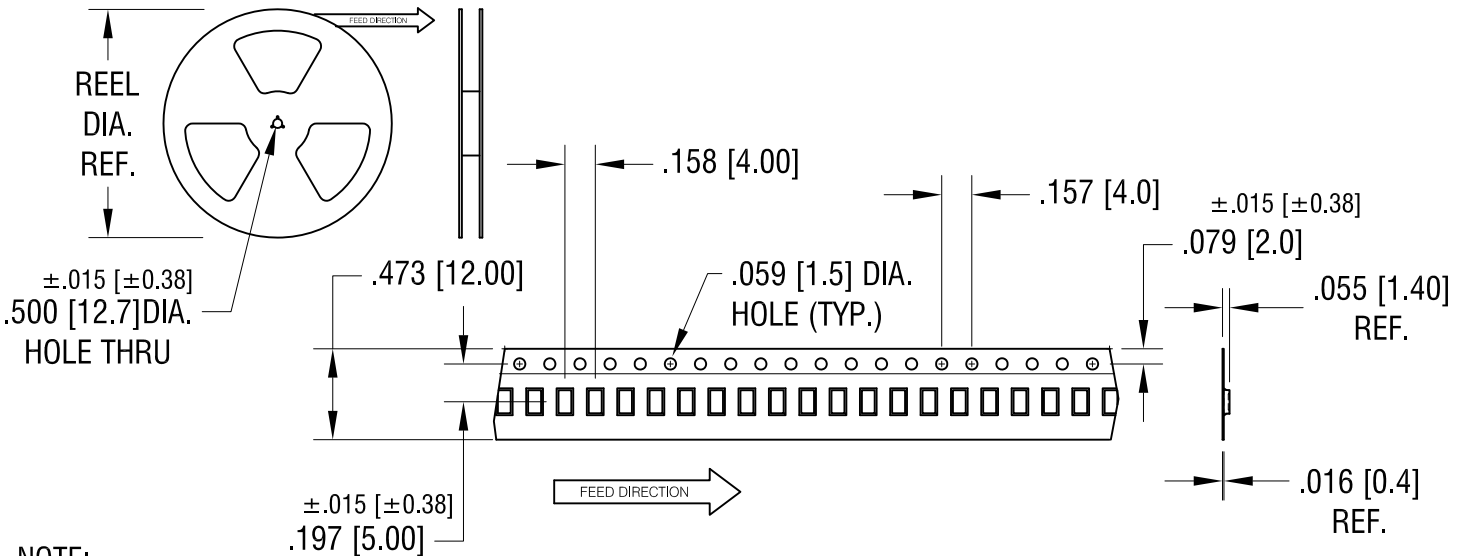
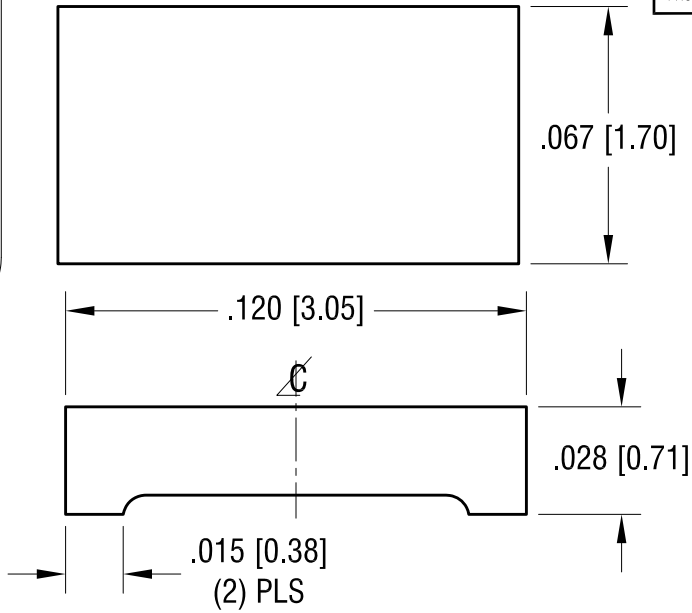


THIS DOCUMENT IS THE PROPERTY OF KEYSTONE ELECTRONICS CORP. AND SHALL NOT BE REPRODUCED, DISTRIBUTED OR USED AS A BASIS FOR MANUFACTURE WITHOUT PRIOR WRITTEN PERMISSION FROM KEYSTONE ELECTRONICS CORP.

PC BOARD PATTERN



ACTUAL SIZE



NOTE:

TAPE AND REEL SPECIFICATIONS:

1. TAPE:
MAT'L - ALL CONDUCTIVE POLYSTYRENE CARRIER
ANSI/EIA-481 STANDARD

2. REEL:
13.00 [330.0] DIA. , 5000 PIECES PER REEL

PART SPECIFICATIONS:

1. MAT'L- .028 [0.70] TH'K COPPER
FINISH: SILVER PLATE

REEL DIA. WAS 7.00 [178.00]
CHANGE AS PER ECN 20-045

5.13.20

A

DATE DESCRIPTION REV.

KEYSTONE ELECTRONICS CORP.

www.keyelco.com • NEW HYDE PARK, NY 11040 • Tel (516) 328-7500

PART NAME		1206 JUMPER ON TAPE AND REEL	
MATERIAL		AS NOTED	
FINISH	AS NOTED	DRN BY	NT
		DATE	10.02.15
		APP'D	LN
		SCALE	1X, 20X
TOLERANCES	INCH [MM]	CODE	DWG NO.
DECIMAL	± .005 [± 0.13]	C	5109
ANGULAR	± 1°		
UNLESS OTHERWISE SPECIFIED			