

REFERENCE SPECIFICATIONS

-NFC 93425 (in compliance with HE 507)

PHYSICAL CHARACTERISTICS

-INSULATOR MATERIAL: THERMOPLASTIC UL94V0

-CONTACT MATERIAL: PHOSPHOR BRONZE(SIGNAL CONTACT)
GOLD OVER NICKEL

-ACCESSORIES: STAINLESS STEEL or BRASS
Cadmium plated, yellow passivation

-SHELLS: STEEL
Cadmium plated, yellow passivation

ELECTRICAL CHARACTERISTICS

-NOMINAL CURRENT: 7.5A (SIGNAL CONTACT)

-CONTACT RESISTANCE: ≤ 7.3 m Ohms SIGNAL

-CONTACT/CONTACT : ≥ 1000 V

-CONTACT/GROUND : ≥ 1200 V

-INSULATION RESISTANCE: ≥ 5000 MOhms

- CLIMATIC CATEGORY: 55/125/21

TEMPERATURE RANGE -55°C TO +125°C

DAMP HEAT STEADY STATE 56 DAYS

SALT SPRAY 48 HOURS

Series

DBML13W3S300N

Shell size: **E A B C D**
see sheet 3

M :characteristic
for the DM series

Front accessory definition
see sheet 2

Blank :without accessory

L :threaded insert M3

O :threaded insert UNC 4-40

V :female screw UNC 4-40

F :floating mounting

S :spacer

Layout of contacts (see sheet 3)

Contacts

S :Socket

Termination type

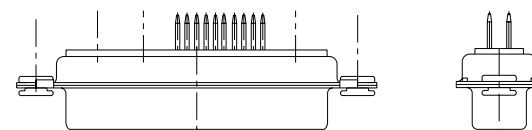
3 Straight version

Plating

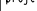


00 straight solder 500 matings/unmatings

43 straight solder 500 matings/unmatings for harsh environment

N :obligatory indication for HE 507 series



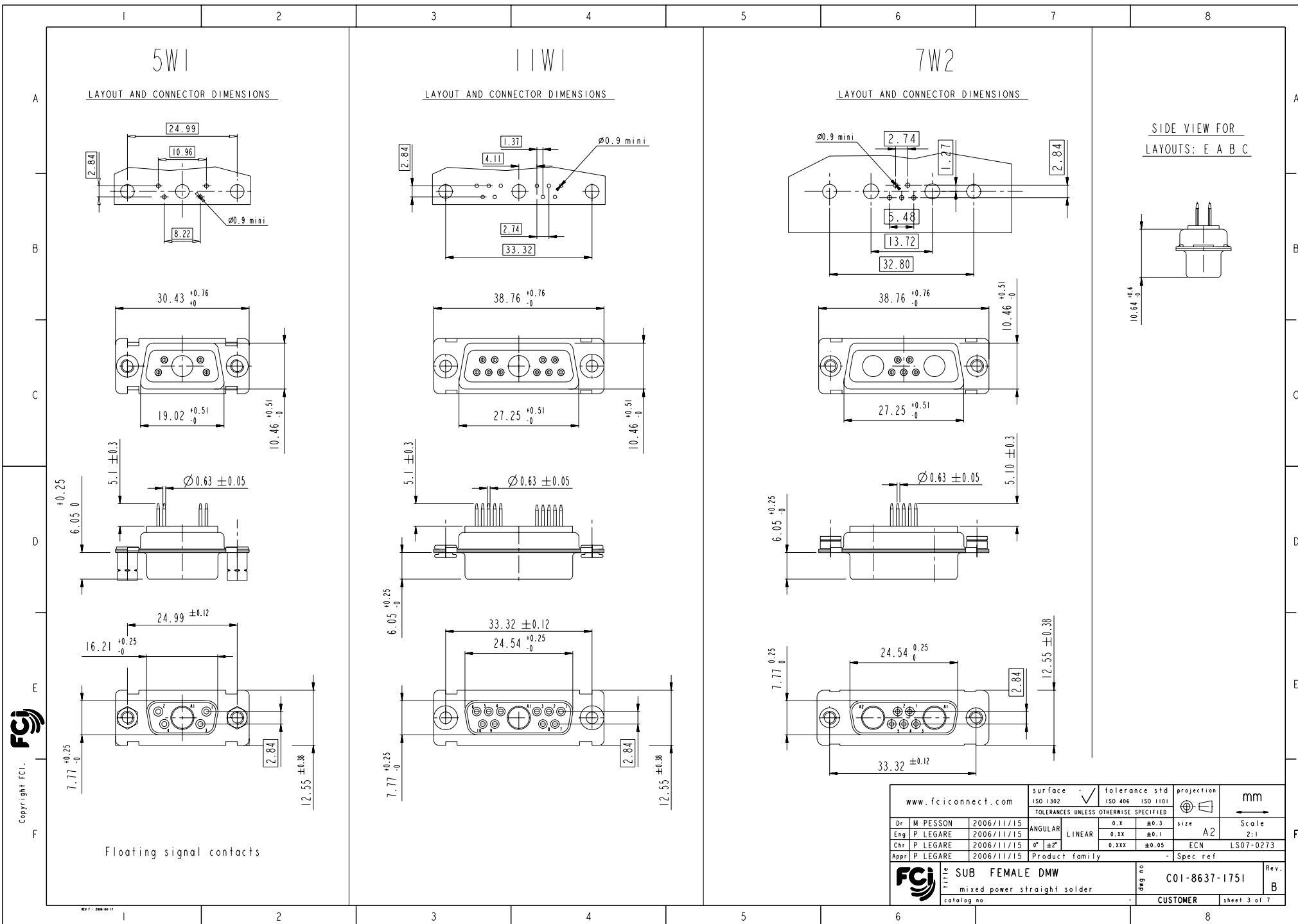
13W3 FOR EXAMPLE

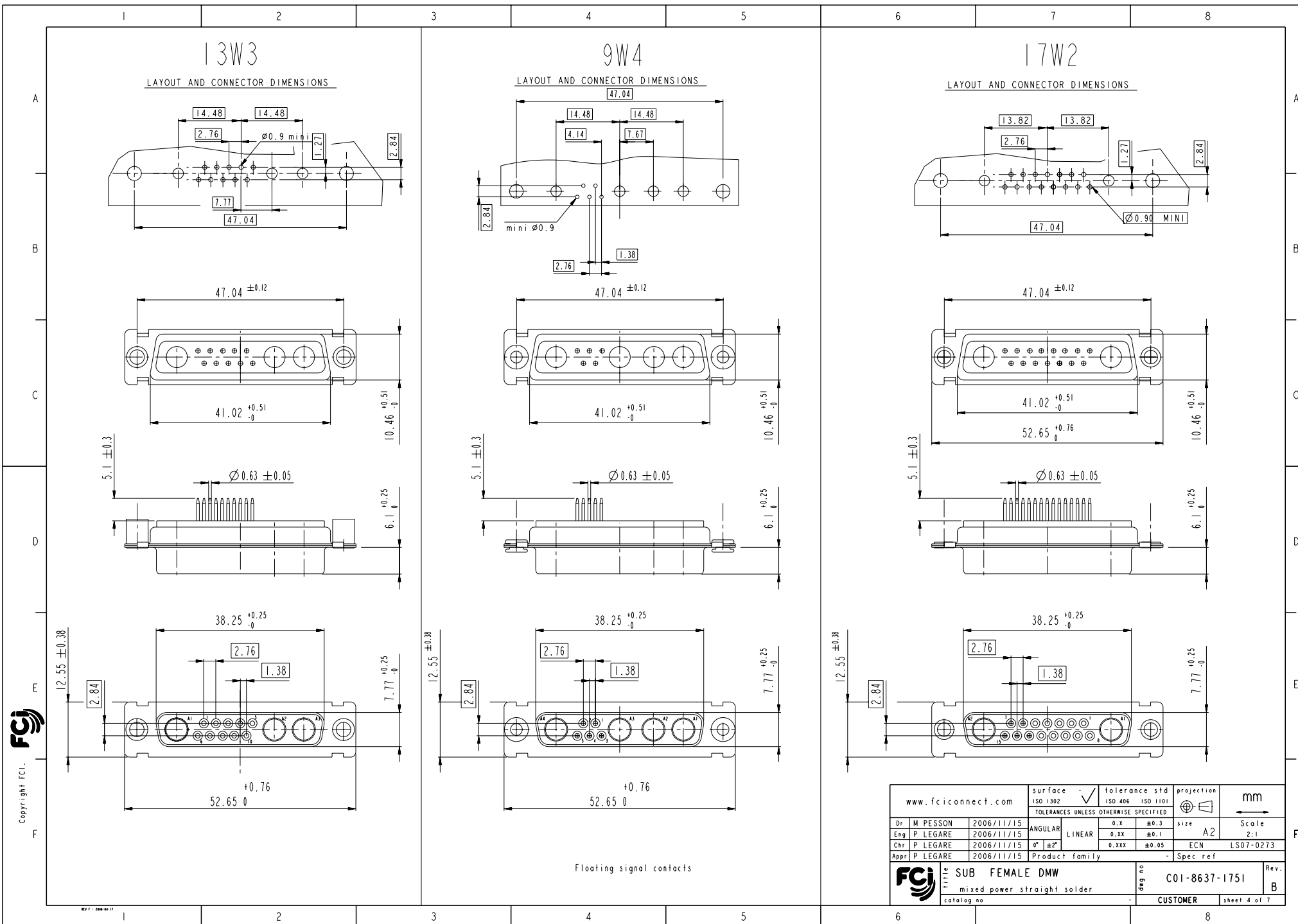
www.fciconnect.com				surface <input checked="" type="checkbox"/> tolerance std ISO 1302 ISO 406 ISO 1101			projection 		mm 				
				TOLERANCES UNLESS OTHERWISE SPECIFIED									
rev	ecn no	dr	date	Dr	M PESSON	2006/11/15	ANGULAR	0.X	±0.3	size	A2	Scale	2:1
A	LS06-0174	MPE	2006/11/15	Eng	P LEGARE	2006/11/15	LINEAR	0.XX	±0.1				
B	LS07-0273	MPE	2007/10/30	Chr	P LEGARE	2006/11/15	0° ±2°	0.XXX	±0.05	ECN	LS07-0273		
-	-	-	-	Appr	P LEGARE	2006/11/15	Product family	-	-	Spec ref			
-	-	-	-										
-	-	-	-										
-	-	-	-										
-	-	-	-										
								title SUB FEMALE DMW		deg no C01-8637-1751		Rev B	
				mixed power straight solder									
				catalog no				-		CUSTOMER		sheet 1 of 7	



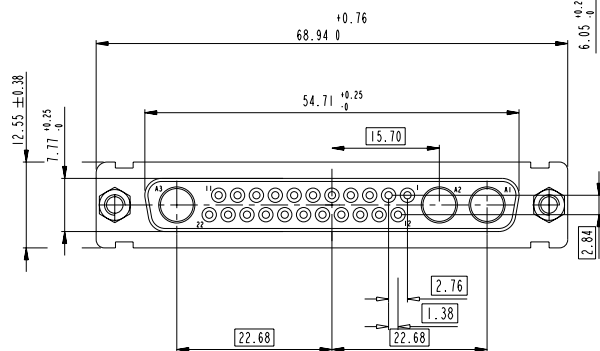
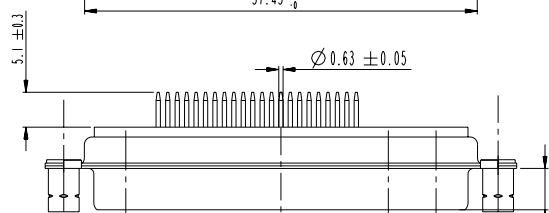
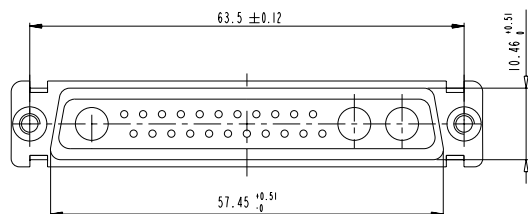
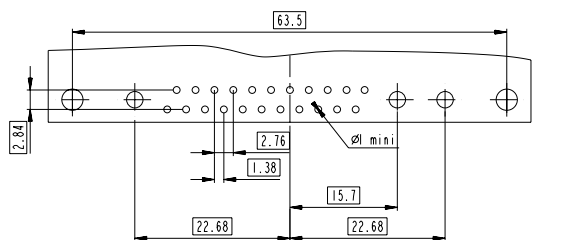
Copyright FCI.

REV 7 - 2006-04-17



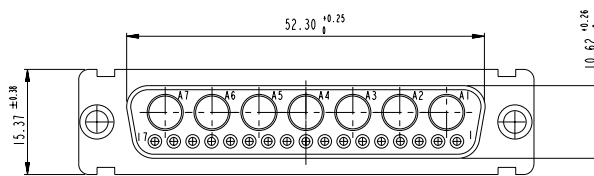
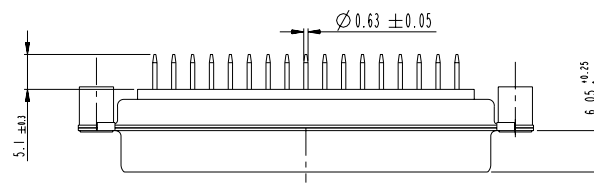
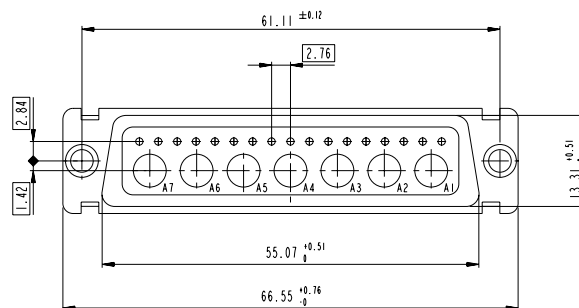
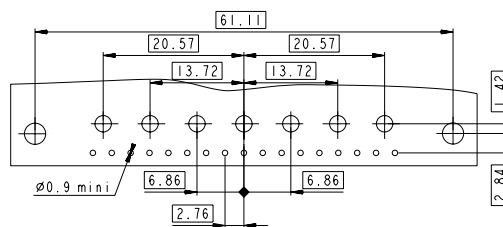


LAYOUT AND CONNECTOR DIMENSIONS

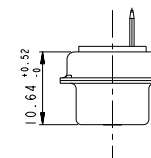


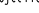
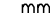

REV F - 2006-08-17

LAYOUT AND CONNECTOR DIMENSIONS



SIDE VIEW FOR
LAYOUTS: D



www.fciconnect.com		surface <input checked="" type="checkbox"/> tolerance std ISO 1302 ISO 406 ISO 1181		projection 		mm 	
		TOLERANCES UNLESS OTHERWISE SPECIFIED					
Dr	M PESSON	2006/11/15	ANGULAR		0.X	±0.3	size
Eng	P. LEGARE	2006/11/15	LINEAR		0.XX	±0.1	A2
Chr	P. LEGARE	2006/11/15	0° ±2°		0.XXX	±0.05	ECN
Appr	P. LEGARE	2006/11/15	Product family				LS07-0273
						- Spec ref	
			SUB FEMALE DMW mixed power straight solder		catloga no -		day no C01-8637-1751
					CUSTOMER		Rev B
					sheet 6 of 7		

Mouser Electronics

Authorized Distributor

Click to View Pricing, Inventory, Delivery & Lifecycle Information:

[FCI / Amphenol:](#)

[DDMF36W4S300N](#) [DAM7W2S300N](#) [DBM13W3S300N](#) [DBM17W2S300N](#) [DBM21W1S300N](#) [DCM21WA4S300N](#)
[DCM27W2S300N](#) [DDM24W7S300N](#) [DDM47W1S300N](#)