



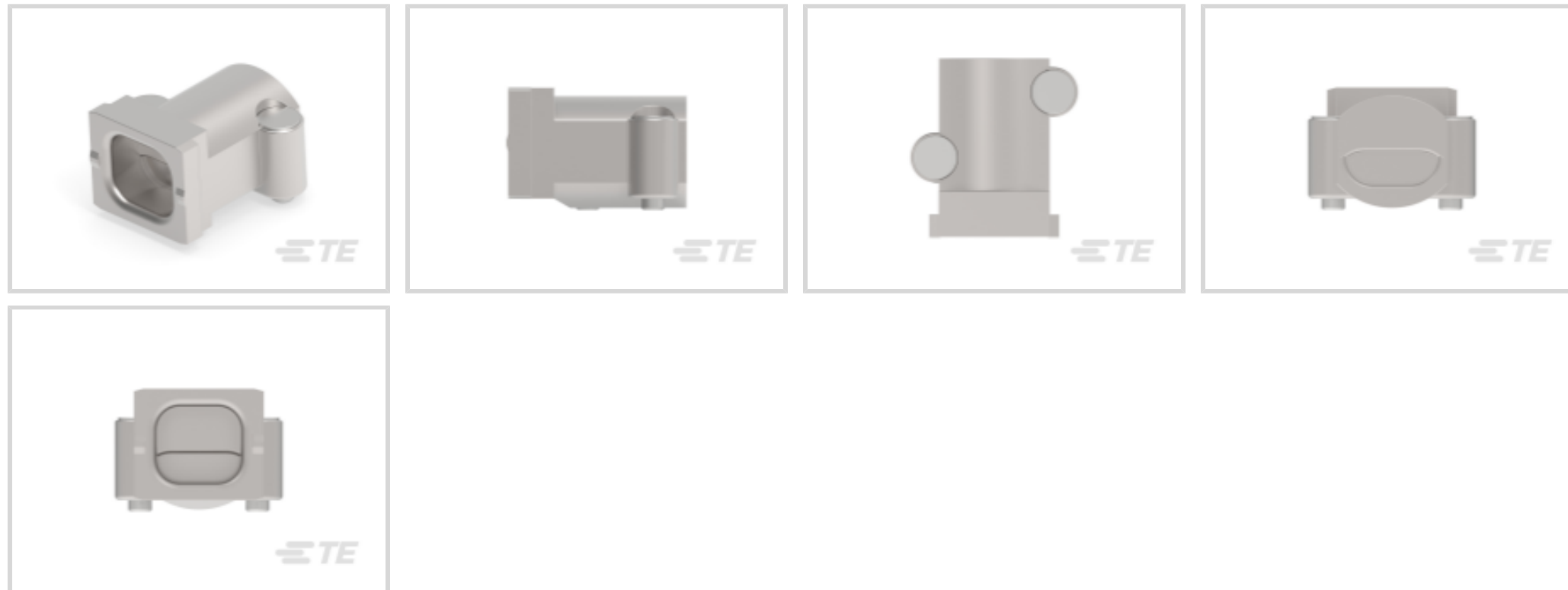
Rail D-Sub Backshells

TE Internal #: 1-2308272-1

Cable Clamp Kit, Zinc, Shell Size 1, Shielded, Rail D-Sub Backshells

[View on TE.com >](#)

Connectors > Connector Accessories > Connector Strain Relief > Cable Clamp for Size 1-3 STD/1-4 QL Shell



Strain Relief Accessory Type: **Cable Clamp Kit**

Primary Product Material: **Zinc**

Compatible With Connector Shell Size: **1**

Shielded: **Yes**

Operating Temperature Range: **-40 – 90 °C [ -40 – 194 °F ]**

[All Cable Clamp for Size 1-3 STD/1-4 QL Shell \(8\)](#)

**Features**

**Product Type Features**

Strain Relief Accessory Type	Cable Clamp Kit
------------------------------	-----------------

**Body Features**

Cable Exit Angle	180°
Primary Product Material	Zinc

**Housing Features**

Compatible With Connector Shape	D-Shaped
Body Orientation	Straight

**Usage Conditions**

Operating Temperature Range	-40 – 90 °C [ -40 – 194 °F ]
-----------------------------	------------------------------

**Operation/Application**

Compatible With Connector Shell Size	1
Shielded	Yes

## Product Compliance

For compliance documentation, visit the product page on [TE.com](#)>

EU RoHS Directive 2011/65/EU	Compliant with Exemptions
EU ELV Directive 2000/53/EC	Not Yet Reviewed
China RoHS 2 Directive MIIT Order No 32, 2016	Restricted Materials Above Threshold
EU REACH Regulation (EC) No. 1907/2006	<p>Current ECHA Candidate List: JUNE 2024 (241)</p> <p>Candidate List Declared Against: JUNE 2024 (241)</p> <p>SVHC &gt; Threshold:</p> <p>Pb (3.5% in Component Part)</p> <p><b>Article Safe Usage Statements:</b> Do not eat, drink or smoke when using this product. Wash thoroughly after handling. Recycle if possible and dispose of the article by following all applicable governmental regulations relevant to your geographic location.</p>
Halogen Content	Low Halogen - Br, Cl, F, I < 900 ppm per homogenous material. Also BFR/CFR/PVC Free
Solder Process Capability	Not reviewed for solder process capability

### Product Compliance Disclaimer

This information is provided based on reasonable inquiry of our suppliers and represents our current actual knowledge based on the information they provided. This information is subject to change. The part numbers that TE has identified as EU RoHS compliant have a maximum concentration of 0.1% by weight in homogenous materials for lead, hexavalent chromium, mercury, PBB, PBDE, DBP, BBP, DEHP, DIBP, and 0.01% for cadmium, or qualify for an exemption to these limits as defined in the Annexes of Directive 2011/65/EU (RoHS2). Finished electrical and electronic equipment products will be CE marked as required by Directive 2011/65/EU. Components may not be CE marked. Additionally, the part numbers that TE has identified as EU ELV compliant have a maximum concentration of 0.1% by weight in homogenous materials for lead, hexavalent chromium, and mercury, and 0.01% for cadmium, or qualify for an exemption to these limits as defined in the Annexes of Directive 2000/53/EC (ELV). Regarding the REACH Regulation, the information TE provides on SVHC in articles for this part number is based on the latest European Chemicals Agency (ECHA) 'Guidance on requirements for substances in articles' posted at this URL: <https://echa.europa.eu/guidance-documents/guidance-on-reach>

## Compatible Parts



Also in the Series | [Rail D-Sub Backshells](#)



Connector Backshells(55)



Connector Contacts(5)



Connector Hardware(19)



Connector Strain Relief(67)



Crimp D-Sub Connectors(10)



Insertion & Extraction Tools(2)

### Customers Also Bought



TE Part #1-2308340-1  
D-Sub Backshell Size 1



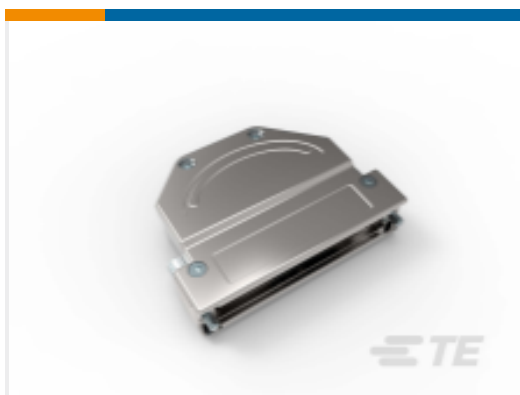
TE Part #2-2176058-7  
RLP73K 3A R12 5% 2K RL



TE Part #1-2308272-2  
Cable Clamp for Size 1-3 STD/1-4 QL  
Shell



TE Part #1-2308341-1  
FULL METAL HOODS SIZE 2



TE Part #1-2308345-3  
FULL METAL HOODS SIZE 4 - 3 (RAW)



TE Part #1-2308265-7  
QL SET FOR VARIANT B 7



TE Part #NMOHPC  
MOUNT, HPM,3/4 NO CABLE



TE Part #ROB21  
SUB, MISCACC, RW, 21in

### Documents

#### Product Drawings

[CABLE CLAMPS \(CASE RAW\)](#)

English

#### CAD Files

[3D PDF](#)

[3D](#)

[Customer View Model](#)

[ENG\\_CVM\\_CVM\\_1-2308272-1\\_A.2d\\_dxf.zip](#)



English

Customer View Model

[ENG\\_CVM\\_CVM\\_1-2308272-1\\_A.3d\\_igs.zip](#)

English

Customer View Model

[ENG\\_CVM\\_CVM\\_1-2308272-1\\_A.3d\\_stp.zip](#)

English

By downloading the CAD file I accept and agree to the [Terms and Conditions](#) of use.

## Datasheets & Catalog Pages

[Rail D-Sub Backshells Flyer](#)

English