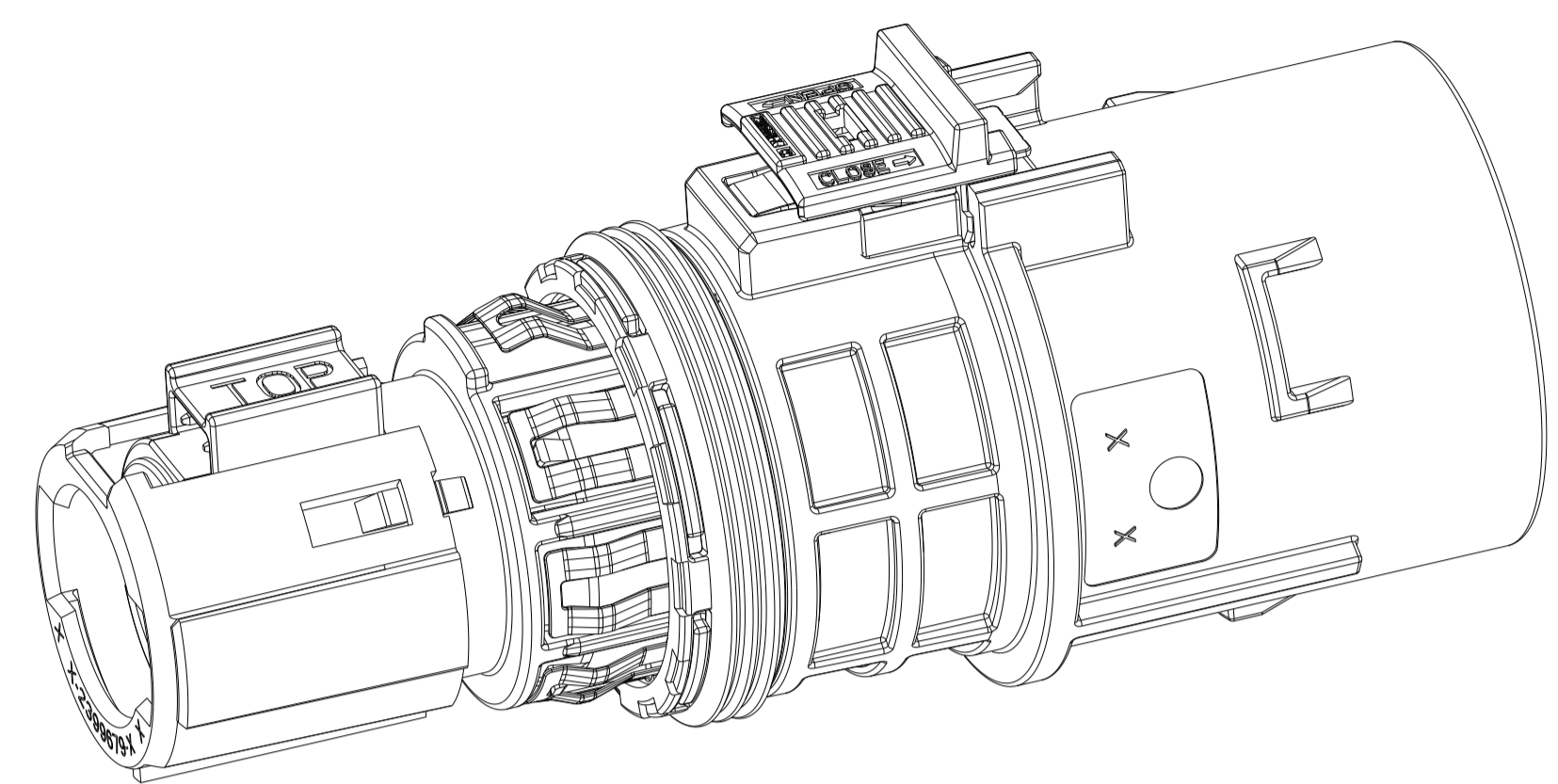
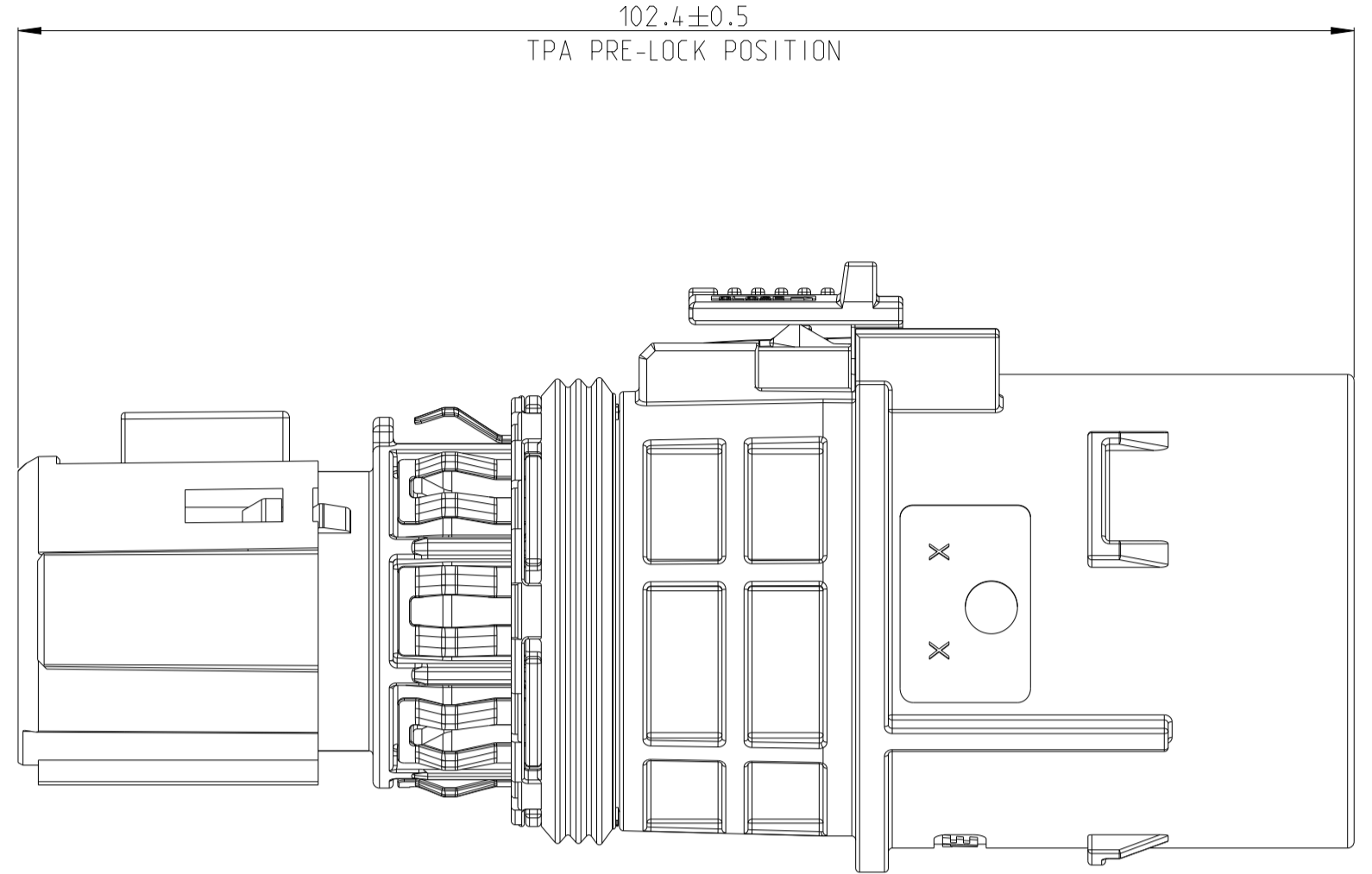
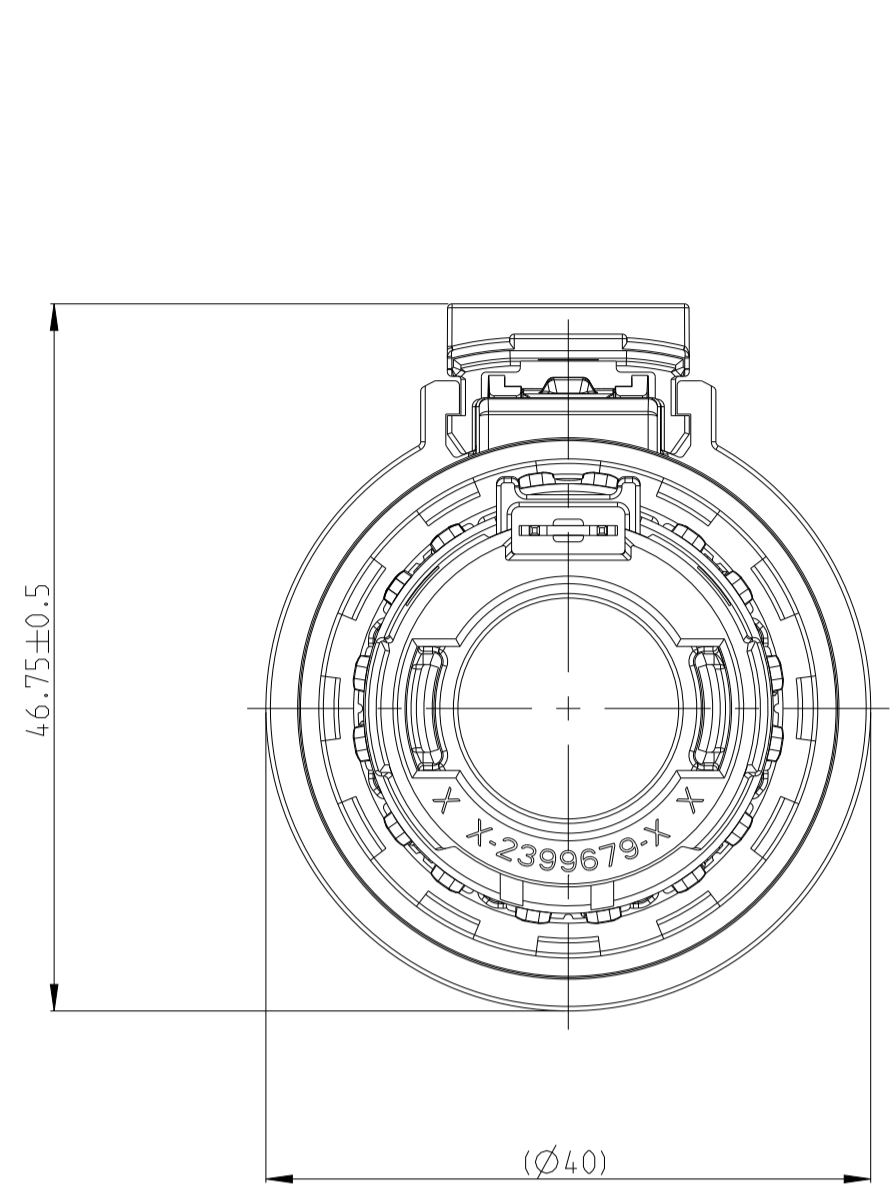


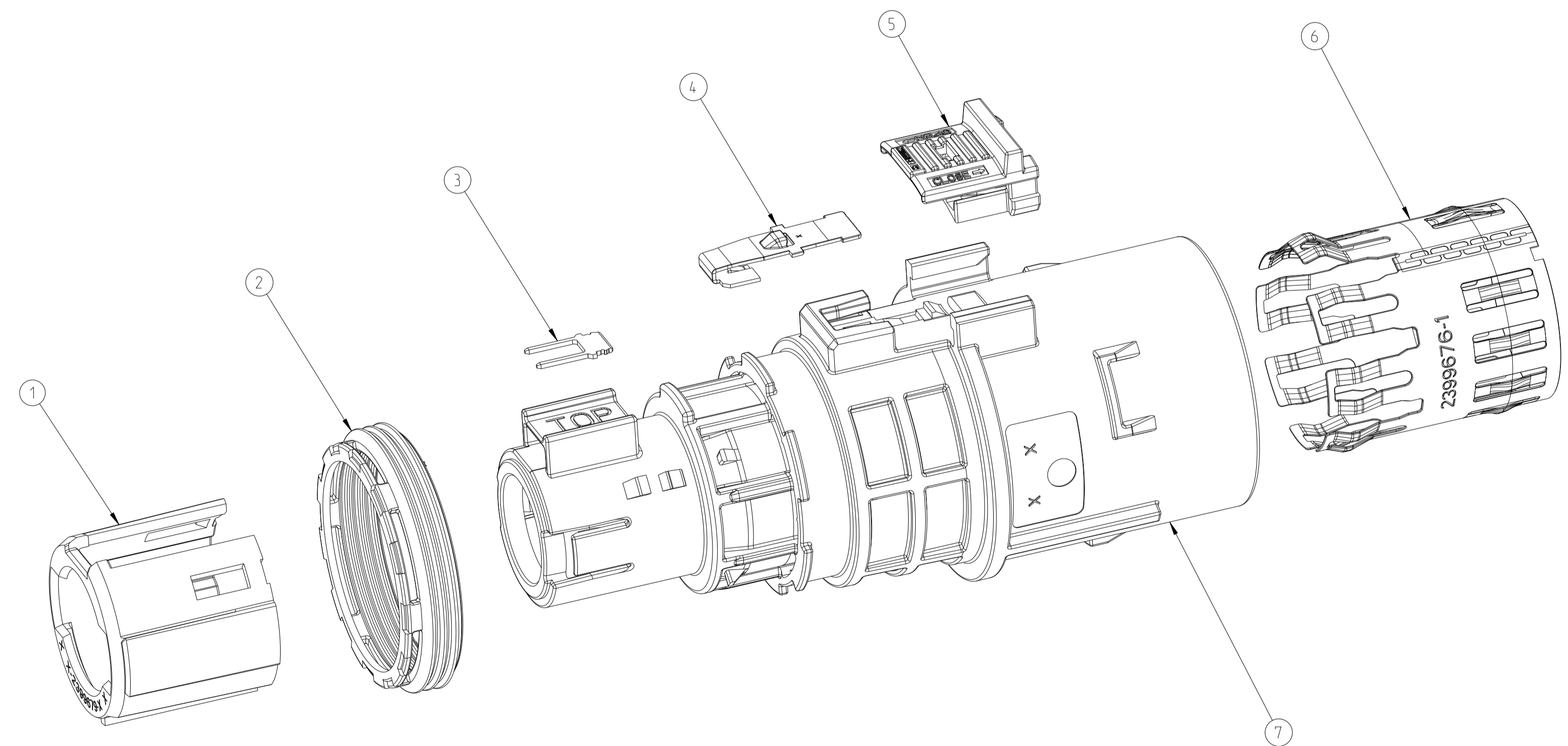
REVISIONS				
P	LTR	DESCRIPTION	DATE	APVD
A		INITIAL DRAWING	12NOV2021	C.C.
A1		ECR-22-136442	11APR2022	S.T.
B		ECR-23-169320	15MAR2023	S.T.
B1		ECR-23-177589	05JUN2023	S.T.



-1 AS SHOWN

- 1. CODE VARIETY
- 2. APPLICATION TEMP. -40°C ~ 140°C

TE ASSY NO.	CODE	DESCRIPTION	COMPONENT	CODE	MATERIAL	SURFACE COLOR	WEIGHT (g)	QTY	ITEM
1-2399663-3	M	PLUG ASSEMBLY HVP-HD1400 FINGER ACCESS	FOLLOW 2399663-1 PLUG TPA	M	PA66-GF	AQUA RED	(40.94)	1	2-7
1-2399663-2	L	PLUG ASSEMBLY HVP-HD1400 FINGER ACCESS	FOLLOW 2399663-1 PLUG TPA	L	PA66-GF	AQUA BROWN	(40.94)	1	2-7
1-2399663-1	K	PLUG ASSEMBLY HVP-HD1400 FINGER ACCESS	FOLLOW 2399663-1 PLUG TPA	K	PA66-GF	AQUA GREEN	(40.94)	1	2-7
2399663-9	J	PLUG ASSEMBLY HVP-HD1400 FINGER ACCESS	FOLLOW 2399663-1 PLUG TPA	J	PA66-GF	ORANGE	(40.94)	1	2-7
2399663-8	H	PLUG ASSEMBLY HVP-HD1400 FINGER ACCESS	FOLLOW 2399663-1 PLUG TPA	H	PA66-GF	YELLOW	(40.94)	1	2-7
2399663-7	G	PLUG ASSEMBLY HVP-HD1400 FINGER ACCESS	FOLLOW 2399663-1 PLUG TPA	G	PA66-GF	RED	(40.94)	1	2-7
2399663-6	F	PLUG ASSEMBLY HVP-HD1400 FINGER ACCESS	FOLLOW 2399663-1 PLUG TPA	F	PA66-GF	BROWN	(40.94)	1	2-7
2399663-5	E	PLUG ASSEMBLY HVP-HD1400 FINGER ACCESS	FOLLOW 2399663-1 PLUG TPA	E	PA66-GF	GREEN	(40.94)	1	2-7
2399663-4	D	PLUG ASSEMBLY HVP-HD1400 FINGER ACCESS	FOLLOW 2399663-1 PLUG TPA	D	PA66-GF	PURPLE	(40.94)	1	2-7
2399663-3	C	PLUG ASSEMBLY HVP-HD1400 FINGER ACCESS	FOLLOW 2399663-1 PLUG TPA	C	PA66-GF	BLUE	(40.94)	1	2-7
2399663-2	B	PLUG ASSEMBLY HVP-HD1400 FINGER ACCESS	FOLLOW 2399663-1 PLUG TPA	B	PA66-GF	NATURE	(40.94)	1	2-7
2399663-1	A	PLUG ASSEMBLY HVP-HD1400 FINGER ACCESS	PLUG HOUSING	-	PA66-GF	ORNGE	(40.94)	1	7
			SHIELD	-	COPPER ALLOY	AG PLATED		1	6
			CPA - FINGER ACCESS	-	PA66-GF	RED		1	5
			CPA SPRING - FINGER ACCESS	-	STAINLESS STEEL	-		1	4
			HVIL	-	COPPER	AG PLATED		1	3
		PERIPHERAL SEAL	-	SILICONE	GREEN	1	2		
		PLUG TPA	A	PA66-GF	BLACK	1	1		

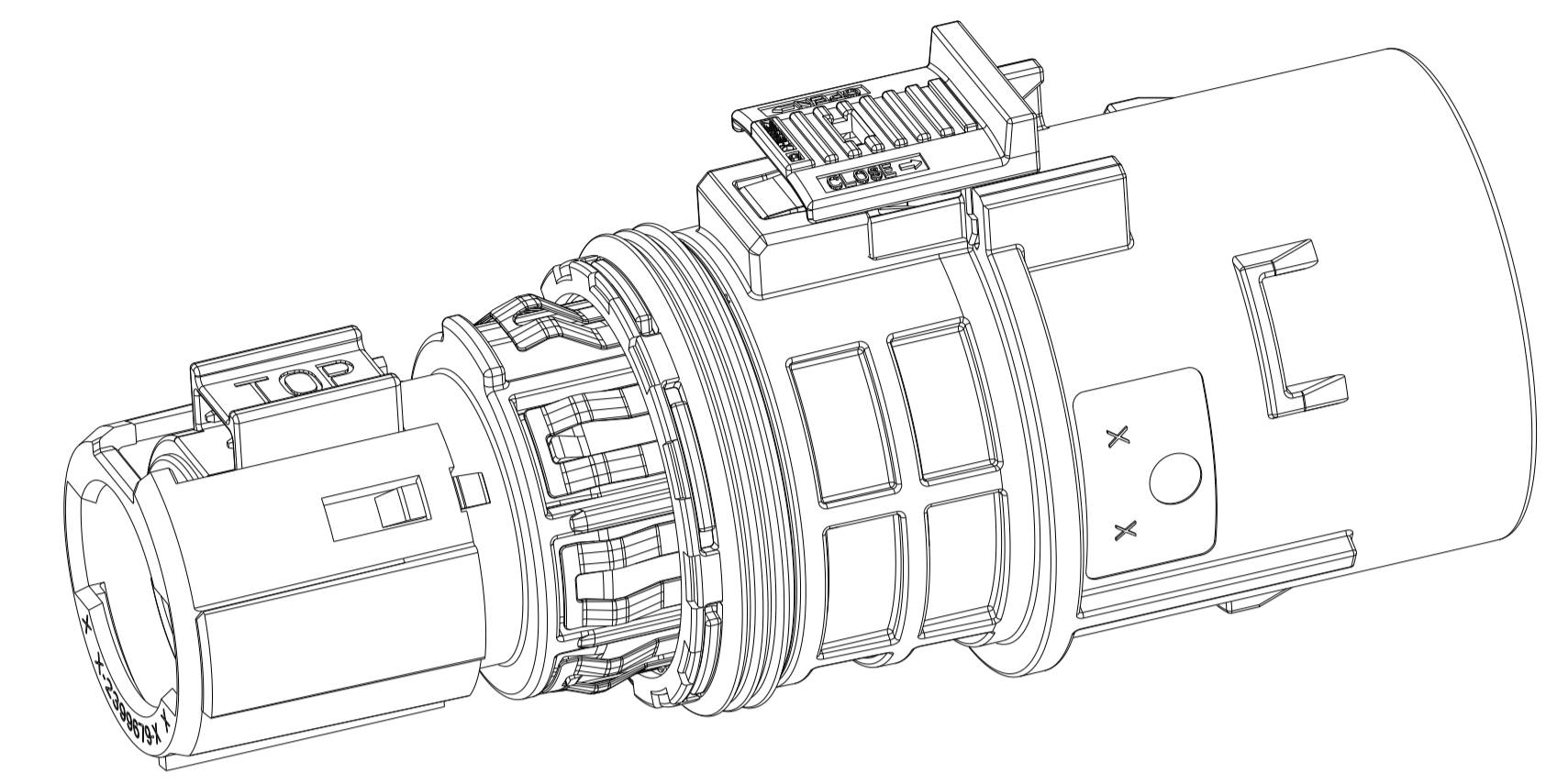
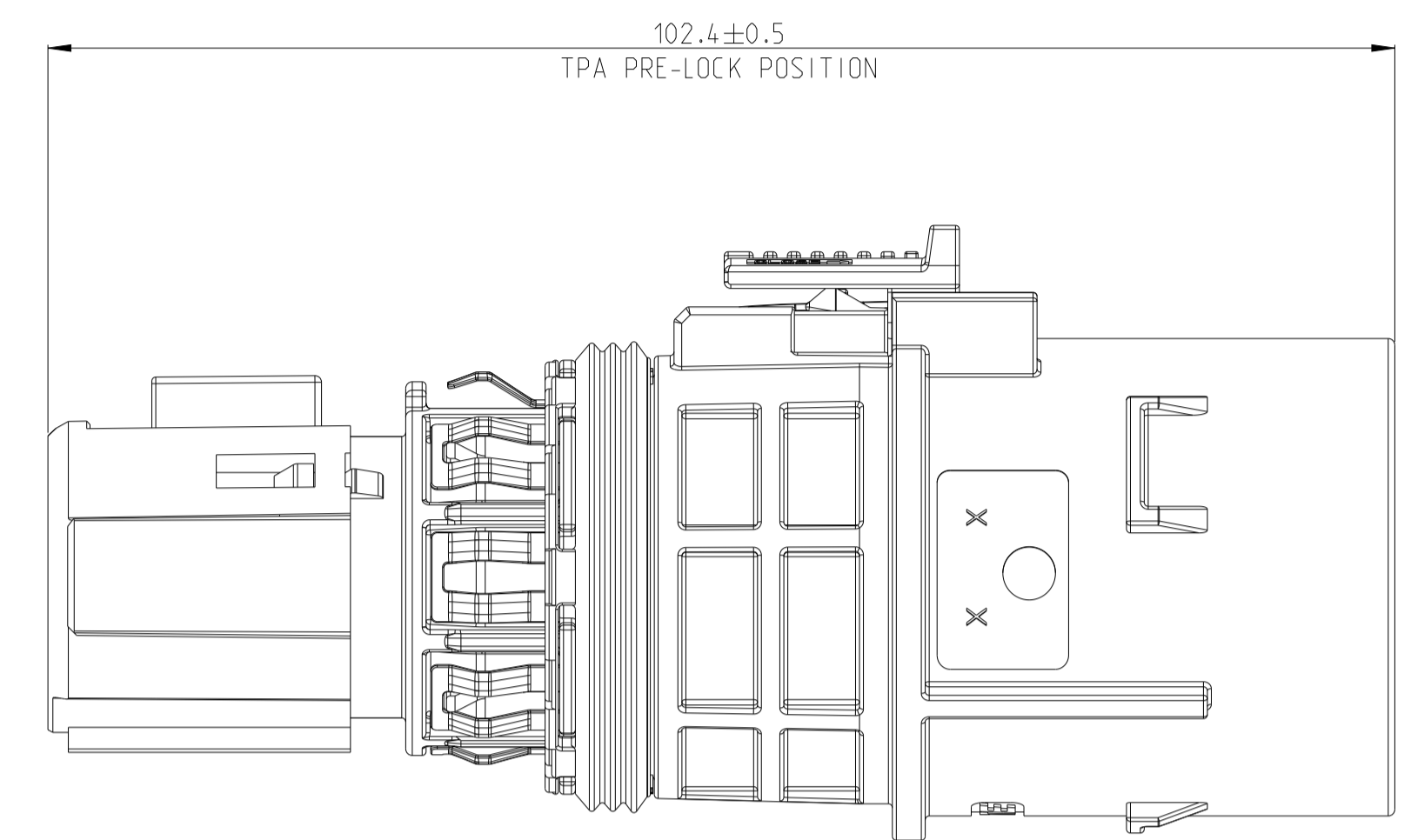
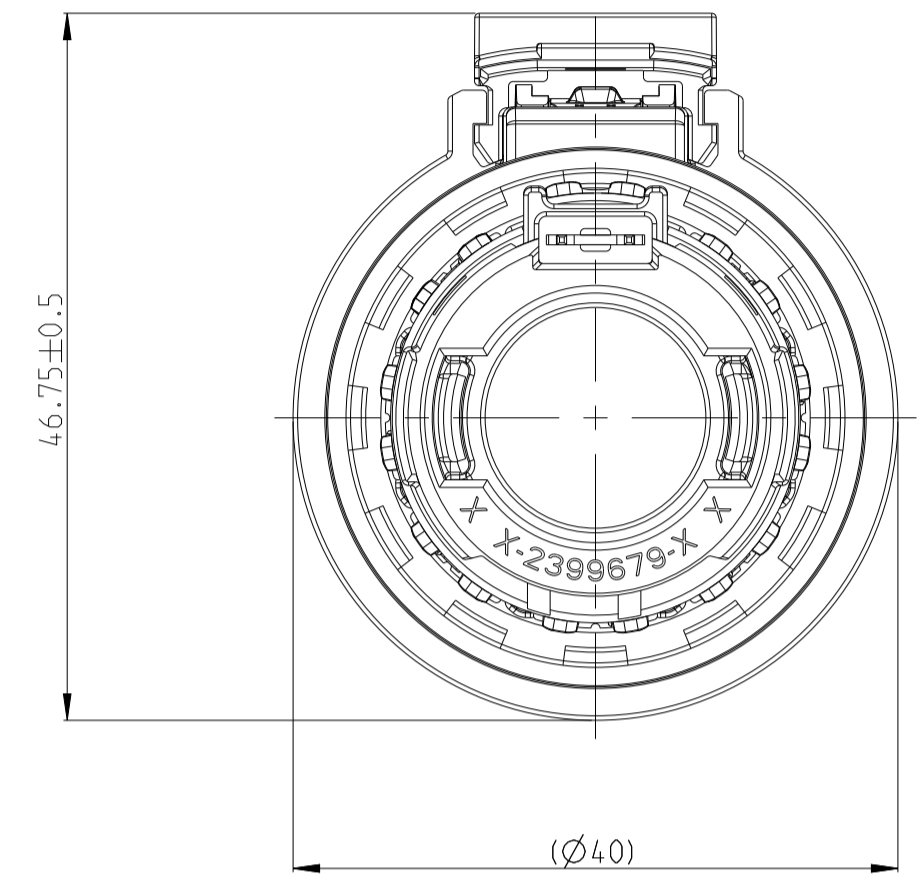


FOR FINGER ACCESS

THIS DRAWING IS A CONTROLLED DOCUMENT.

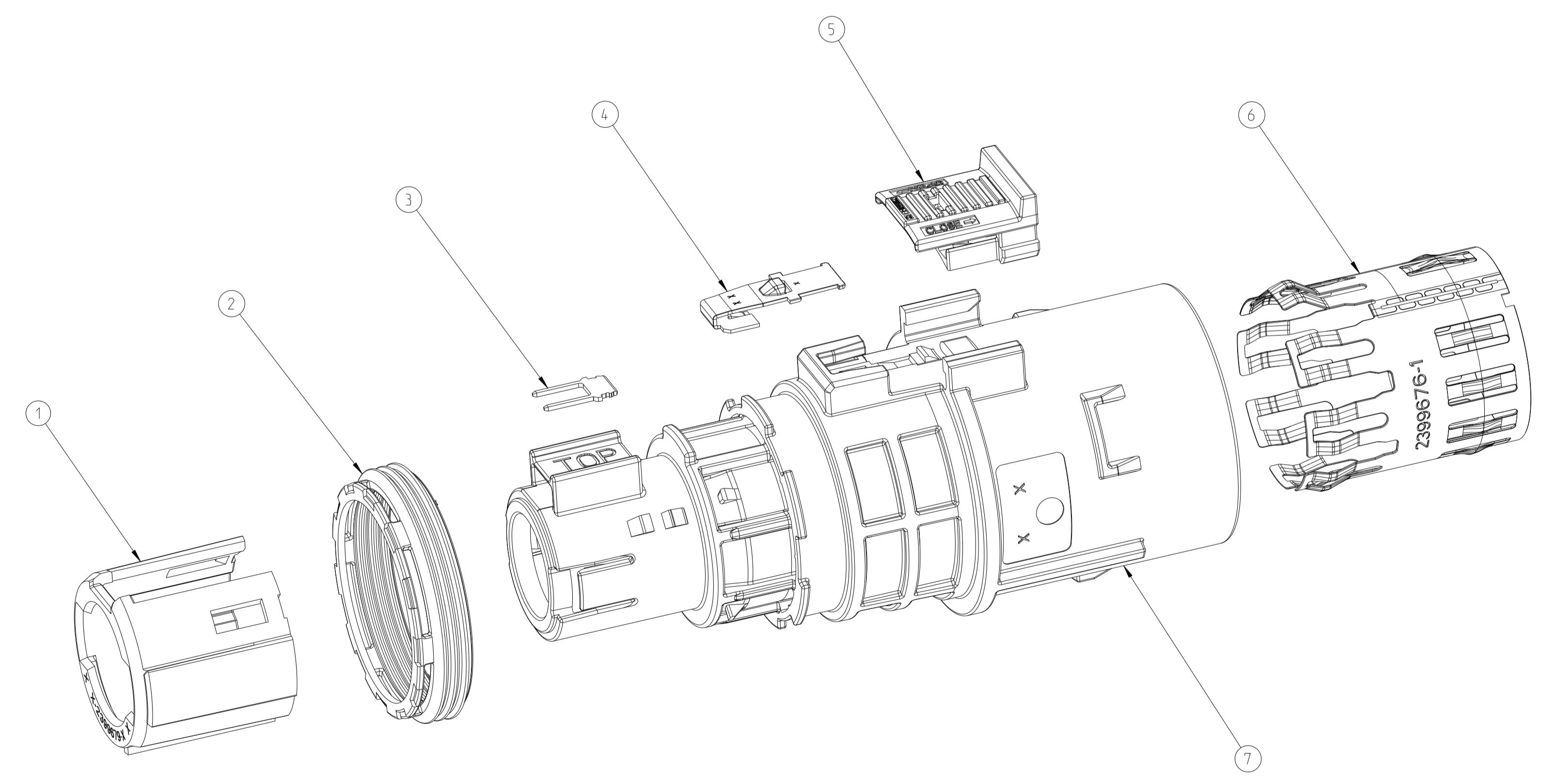
OWN: C.C. CAQ	12NOV2021	
CHK: J.L.I	12NOV2021	
APVD: J.L.I	12NOV2021	NAME: PLUG SUB-ASSEMBLY HVP-HD1400
DIMENSIONS: mm	TOLERANCES UNLESS OTHERWISE SPECIFIED: ±0.5	SIZE: 114-160223/160418
7 PLC ±0.5	1 PLC ±0.1	SCALE: 2:1
2 PLC ±0.01	3 PLC ±0.001	SHEET: 1 OF 3
3 PLC ±0.001	4 PLC ±0.0001	REV: B1
4 PLC ±0.0001	ANGLES	
MATERIAL: FINISH	WEIGHT	
CUSTOMER DRAWING		

REVISIONS				
P	LTN	DESCRIPTION	DATE	APVD
		SEE SHEET 1		



2--1 AS SHOWN

TE ASSY NO.	CODE	DESCRIPTION	COMPONENT	CODE	MATERIAL	SURFACE COLOR	WEIGHT (g)	QTY	ITEM
3-2399663-3	M	PLUG ASSEMBLY HVP-HD1400 TOOL ACCESS	FOLLOW 2-2399663-1 PLUG TPA	M	PA66-GF	AQUA RED	(41.00)	1	2-7
3-2399663-2	L	PLUG ASSEMBLY HVP-HD1400 TOOL ACCESS	FOLLOW 2-2399663-1 PLUG TPA	L	PA66-GF	AQUA BROWN	(41.00)	1	2-7
3-2399663-1	K	PLUG ASSEMBLY HVP-HD1400 TOOL ACCESS	FOLLOW 2-2399663-1 PLUG TPA	K	PA66-GF	AQUA GREEN	(41.00)	1	2-7
2-2399663-9	J	PLUG ASSEMBLY HVP-HD1400 TOOL ACCESS	FOLLOW 2-2399663-1 PLUG TPA	J	PA66-GF	ORANGE	(41.00)	1	2-7
2-2399663-8	H	PLUG ASSEMBLY HVP-HD1400 TOOL ACCESS	FOLLOW 2-2399663-1 PLUG TPA	H	PA66-GF	YELLOW	(41.00)	1	2-7
2-2399663-7	G	PLUG ASSEMBLY HVP-HD1400 TOOL ACCESS	FOLLOW 2-2399663-1 PLUG TPA	G	PA66-GF	RED	(41.00)	1	2-7
2-2399663-6	F	PLUG ASSEMBLY HVP-HD1400 TOOL ACCESS	FOLLOW 2-2399663-1 PLUG TPA	F	PA66-GF	BROWN	(41.00)	1	2-7
2-2399663-5	E	PLUG ASSEMBLY HVP-HD1400 TOOL ACCESS	FOLLOW 2-2399663-1 PLUG TPA	E	PA66-GF	GREEN	(41.00)	1	2-7
2-2399663-4	D	PLUG ASSEMBLY HVP-HD1400 TOOL ACCESS	FOLLOW 2-2399663-1 PLUG TPA	D	PA66-GF	PURPLE	(41.00)	1	2-7
2-2399663-3	C	PLUG ASSEMBLY HVP-HD1400 TOOL ACCESS	FOLLOW 2-2399663-1 PLUG TPA	C	PA66-GF	BLUE	(41.00)	1	2-7
2-2399663-2	B	PLUG ASSEMBLY HVP-HD1400 TOOL ACCESS	FOLLOW 2-2399663-1 PLUG TPA	B	PA66-GF	NATURE	(41.00)	1	2-7
2-2399663-1	A	PLUG ASSEMBLY HVP-HD1400 TOOL ACCESS	PLUG HOUSING	-	PA66-GF	ORNGE	(41.00)	1	7
			SHIELD	-	COPPER ALLOY	AG PLATED		1	6
			CPA - TOOL ACCESS	-	PA66-GF	RED		1	5
			CPA SPRING - TOOL ACCESS	-	STAINLESS STEEL	-		1	4
			HVIL	-	COPPER	AG PLATED		1	3
			PERIPHERAL SEAL	-	SILICONE	GREEN		1	2
			PLUG TPA	A	PA66-GF	BLACK	1	1	



FOR TOOL ACCESS

THIS DRAWING IS A CONTROLLED DOCUMENT.		OWN: C.CAQ	12NOV2021		NAME: PLUG SUB-ASSEMBLY HVP-HD1400	
DIMENSIONS: mm		CHK: J.L.I	12NOV2021		SIZE: 108-160407	CAGE CODE: 116-160223/160418
TOLERANCES UNLESS OTHERWISE SPECIFIED:		APVD: J.L.I	12NOV2021	PRODUCT SPEC: 108-160407	APPLICATION SPEC: 116-160223/160418	SCALE: 2:1
0-PLC ±0.5 1-PLC ±0.1 2-PLC ±0.05 3-PLC ±0.025 4-PLC ±0.001 ANGLES ±0.001 FINISH		CUSTOMER DRAWING		RESTRICTED TO: B1		SHEET 2 OF 3

REVISIONS				
P	LTN	DESCRIPTION	DATE	APPD
		SEE SHEET 1		



CODE A	CODE B	CODE C	CODE D
CODE E	CODE F	CODE G	CODE H
CODE J	CODE K	CODE L	CODE M

THIS DRAWING IS A CONTROLLED DOCUMENT.		OWN: C.CAO 12NOV2021	
DIMENSIONS: mm		CHK: J.L.I 12NOV2021	
TOLERANCES UNLESS OTHERWISE SPECIFIED:		APVD: LYJIN 12NOV2021	NAME: PLUG SUB-ASSEMBLY HVP-HD 14.00 SIZE: CAGE CODE DRAWING NO: 00779 C=2399663
0-PLC ±0.5 1-PLC ±0.1 2-PLC ±0.01 3-PLC ±0.001 4-PLC ±0.0001 ANGLES ±0.001 FINISH		PRODUCT SPEC: 108-160407 APPLICATION SPEC: 116-160223/160418 WEIGHT:	
MATERIAL:		CUSTOMER DRAWING SCALE: 2:1 SHEET 3 OF 3 REV: B1	